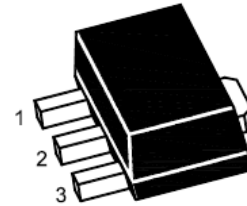


AT78L12SQ

3-Terminal Positive Voltage Regulator



1.OUT 2.GND 3.IN
SOT-89 Plastic Package

Absolute Maximum Ratings($T_a=25^\circ\text{C}$)

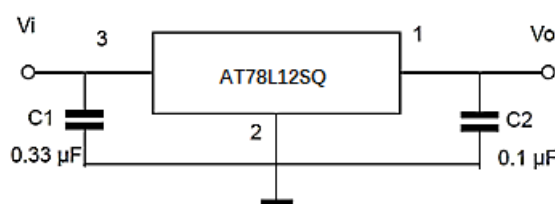
Parameter	Symbol	Rating	Unit
Input Voltage	V_I	35	V
Power Dissipation	P_{tot}	800 ¹⁾	mW
Operating Temperature	T_{opr}	- 20 to + 120	$^\circ\text{C}$
Storage Temperature Range	T_{stg}	- 55 to +150	$^\circ\text{C}$

¹⁾ 15 mm x 25 mm x 0.7 mm alumina ceramic board, $T_a \leq 25^\circ\text{C}$

Electrical Characteristics($T_a=25^\circ\text{C}$)

(Unless otherwise specified, $0^\circ\text{C} \leq T_j \leq 125^\circ\text{C}$, $V_I = 19\text{ V}$, $I_o = 40\text{ mA}$, $C_1 = 0.33\ \mu\text{F}$, $C_0 = 0.1\ \mu\text{F}$)

Parameter	Symbol	Test Condition	Min.	Typ.	Max.	Unit
Output Voltage	V_O	$T_j = 25^\circ\text{C}$	11.5	12	12.5	V
		$14.5\text{ V} \leq V_I \leq 27\text{ V}$, $1\text{ mA} \leq I_o \leq 40\text{ mA}$	11.4	-	12.6	V
		$V_I = 19\text{ V}$, $1\text{ mA} \leq I_o \leq 70\text{ mA}$	11.4	-	12.6	V
Line Regulation	Regline	$14.5\text{ V} \leq V_I \leq 27\text{ V}$, $T_j = 25^\circ\text{C}$	-	-	250	mV
		$16\text{ V} \leq V_I \leq 27\text{ V}$, $T_j = 25^\circ\text{C}$	-	-	200	
Load Regulation	Regload	$1\text{ mA} \leq I_o \leq 100\text{ mA}$, $T_j = 25^\circ\text{C}$	-	-	100	mV
		$1\text{ mA} \leq I_o \leq 40\text{ mA}$, $T_j = 25^\circ\text{C}$	-	-	50	
Quiescent Current	I_Q	$T_j = 25^\circ\text{C}$	-	-	6	mA
Quiescent Current Change	ΔI_Q	$16\text{ V} \leq V_I \leq 27\text{ V}$	-	-	1.5	mA
		$1\text{ mA} \leq I_o \leq 40\text{ mA}$	-	-	0.1	
Output Noise Voltage	V_N	$10\text{ Hz} \leq f \leq 100\text{ KHz}$, $T_j = 25^\circ\text{C}$	-	80	-	μV
Ripple Rejection	RR	$f = 120\text{ Hz}$, $15\text{ V} \leq V_I \leq 25\text{ V}$, $T_j = 25^\circ\text{C}$	37	-	-	dB
Dropout Voltage	V_{Drop}	$T_j = 25^\circ\text{C}$	-	1.7	-	V



X-ON Electronics

Largest Supplier of Electrical and Electronic Components

Click to view similar products for [Linear Voltage Regulators](#) category:

Click to view products by [Agertech](#) manufacturer:

Other Similar products are found below :

[LV5684PVD-XH](#) [MCDTSA6-2R](#) [L7815ACV-DG](#) [LV56801P-E](#) [UA7805CKC](#) [714954EB](#) [ZMR500QFTA](#) [BA033LBSG2-TR](#)

[NCV78M05ABDTRKG](#) [LV5680P-E](#) [L79M05T-E](#) [L78LR05D-MA-E](#) [NCV317MBTG](#) [NTE7227](#) [MP2018GZD-33-P](#) [MP2018GZD-5-P](#)

[LV5680NPVC-XH](#) [ZTS6538SE](#) [UA78L09CLP](#) [UA78L09CLPR](#) [CAT6221-PPTD-GT3](#) [MC78M09CDTRK](#) [NCV51190MNTAG](#)

[BL1118CS8TR1833](#) [BL8563CKETR18](#) [BL8077CKETR33](#) [BL9153-33CC3TR](#) [BL9161G-15BADRN](#) [BL9161G-28BADRN](#)

[BRCO7530MMC](#) [CJ7815B-TFN-ARG](#) [LM317C](#) [GM7333K](#) [GM7350K](#) [XC6206P332MR](#) [HT7533](#) [LM7912S/TR](#) [LT1764S/TR](#) [LM7805T](#)

[LM338T](#) [LM1117IMP-3.3/TR](#) [HT1117AM-3.3](#) [HT7550S](#) [AMS1117-3.3](#) [HT7150S](#) [78L12](#) [HT7550](#) [HT7533-1](#) [HXY6206I-2.5](#) [HT7133](#)