

● General Description

The AGM042N10A combines advanced trench MOSFET technology with a low resistance package to provide extremely low $R_{DS(ON)}$.

This device is ideal for load switch and battery protection applications.

● Features

- Advance high cell density Trench technology
- Low $R_{DS(ON)}$ to minimize conductive loss
- Low Gate Charge for fast switching
- Low Thermal resistance

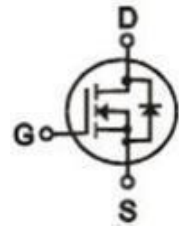
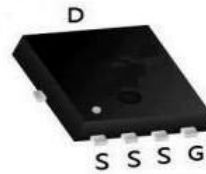
● Application

- MB/VGA Vcore
- SMPS 2nd Synchronous Rectifier
- POL application
- BLDC Motor driver

Product Summary

| BVDSS | RDSON | ID |
|-------|-------|------|
| 100V | 4.2mΩ | 110A |

PDFN5*6 Pin Configuration



Package Marking and Ordering Information

| Device Marking | Device | Device Package | Reel Size | Tape width | Quantity |
|----------------|------------|----------------|-----------|------------|----------|
| AGM042N10A | AGM042N10A | PDFN5*6 | ---- | ---- | 3000 |

Table 1. Absolute Maximum Ratings (TA=25°C)

| Symbol | Parameter | Value | Unit |
|-------------|--|------------|------|
| VDS | Drain-Source Voltage (VGS=0V) | 100 | V |
| VGS | Gate-Source Voltage (VDS=0V) | ±20 | V |
| ID | Drain Current-Continuous(Tc=25°C) (Note 1) | 110 | A |
| | Drain Current-Continuous(Tc=100°C) | 78 | A |
| IDM (pluse) | Drain Current-Continuous@ Current-Pulsed (Note 2) | 345 | A |
| PD | Maximum Power Dissipation(Tc=25°C) | 142 | w |
| | Maximum Power Dissipation(Tc=100°C) | 56 | w |
| EAS | Avalanche energy (Note 3) | 320 | mJ |
| TJ,TSTG | Operating Junction and Storage Temperature Range | -55 To 150 | °C |

Table 2. Thermal Characteristic

| Symbol | Parameter | Typ | Max | Unit |
|--------|---|-----|------|------|
| RθJA | Thermal Resistance Junction-ambient (Steady State) ¹ | --- | 62 | °C/W |
| RθJC | Thermal Resistance Junction-Case ¹ | --- | 0.88 | °C/W |

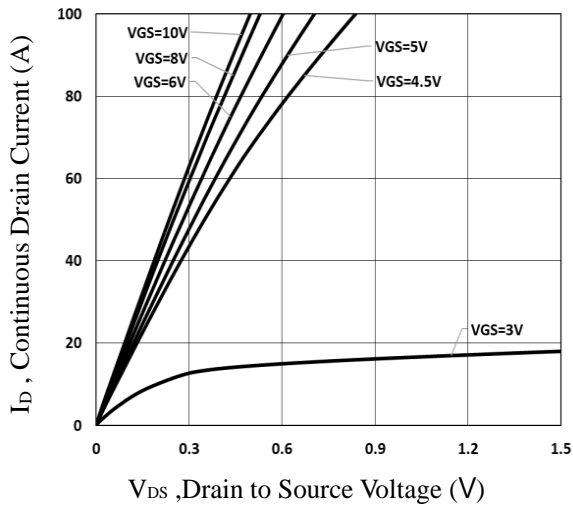
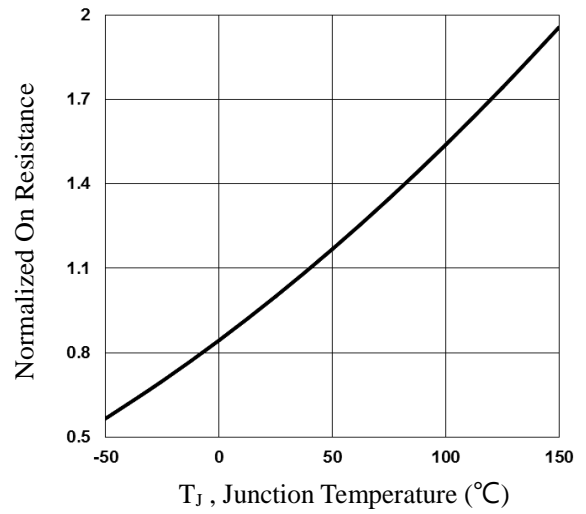
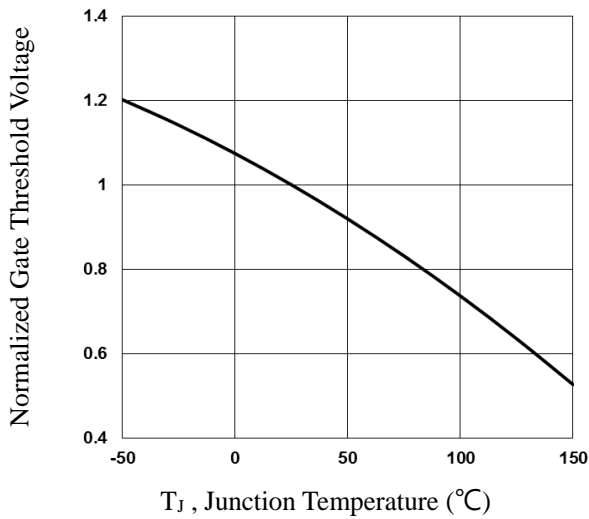
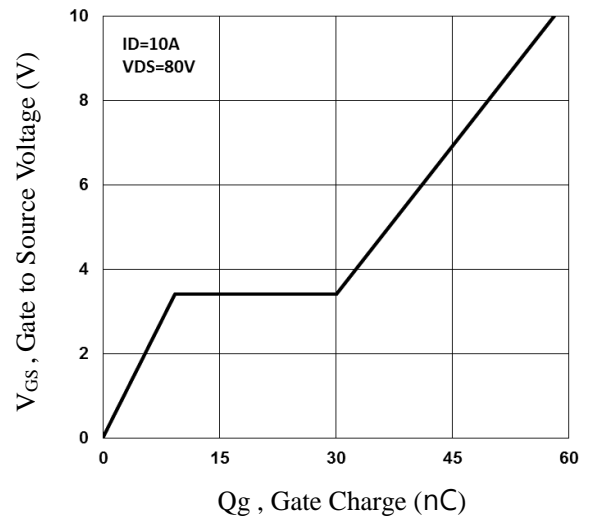
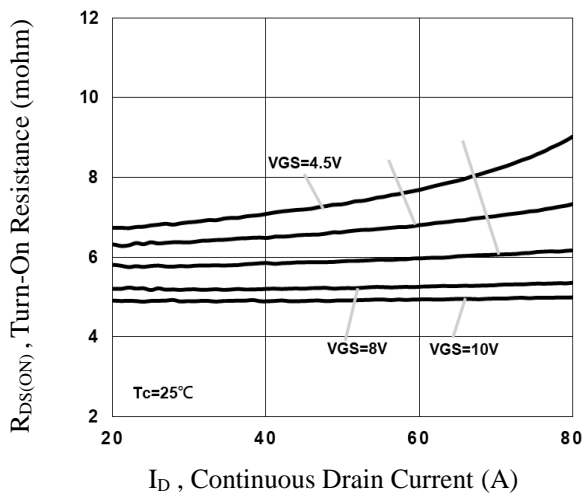
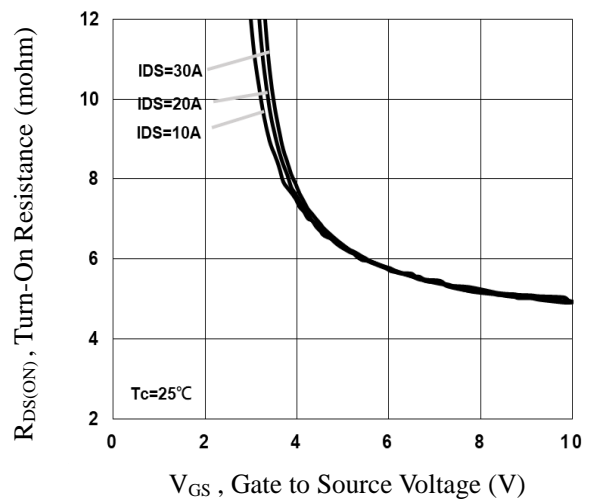
Table 3. Electrical Characteristics (TA=25°C unless otherwise noted)

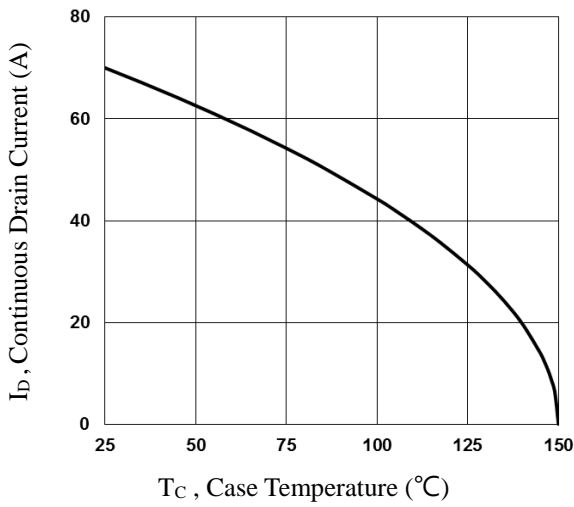
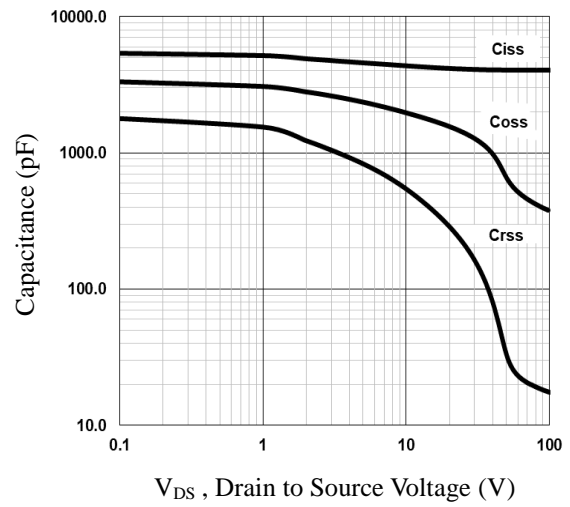
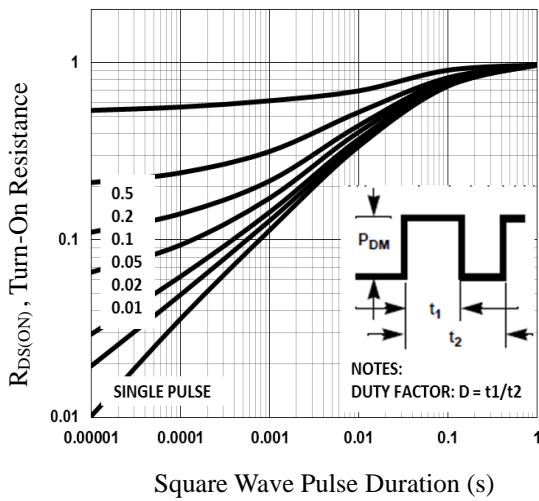
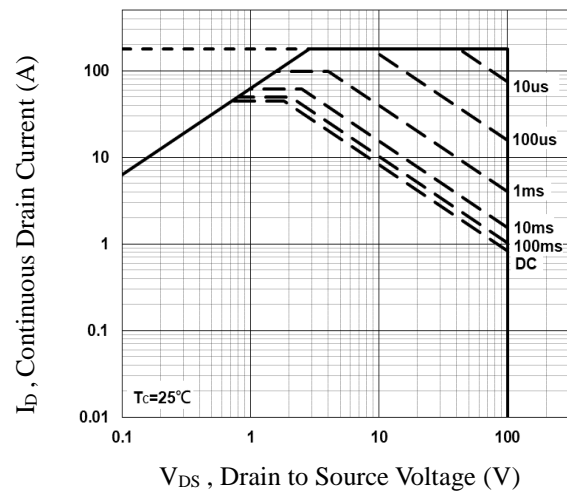
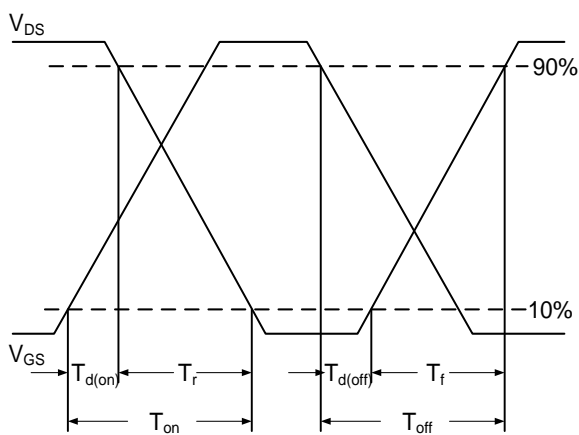
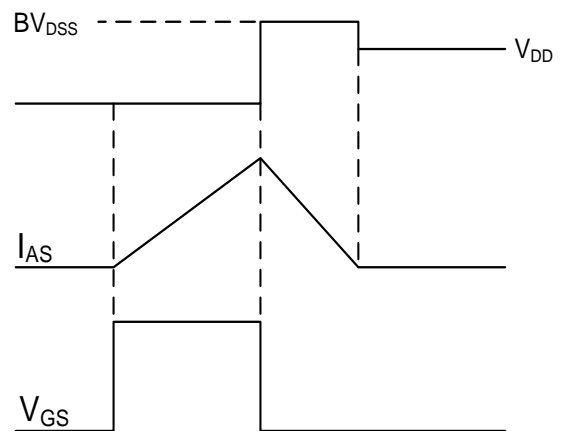
| Symbol | Parameter | Conditions | Min | Typ | Max | Unit |
|---|----------------------------------|-----------------------------------|-----|------|------|------|
| On/Off States | | | | | | |
| BVDSS | Drain-Source Breakdown Voltage | VGS=0V ID=250μA | 100 | -- | -- | V |
| IDSS | Zero Gate Voltage Drain Current | VDS=100V,VGS=0V | -- | -- | 1 | μA |
| IGSS | Gate-Body Leakage Current | VGS=±20V,VDS=0V | -- | -- | ±100 | nA |
| VGS(th) | Gate Threshold Voltage | VDS=VGS,ID=250μA | 1.2 | 1.6 | 2.5 | V |
| gFS | Forward Transconductance | VDS=10V,ID=15A | -- | -- | -- | S |
| RDS(on) | Drain-Source On-State Resistance | VGS=10V, ID=15A | -- | 4.2 | 5.5 | mΩ |
| | | VGS=4.5V, ID=8A | -- | 6.2 | 7.5 | mΩ |
| Dynamic Characteristics | | | | | | |
| Ciss | Input Capacitance | VDS=50V,VGS=0V, F=1MHZ | -- | 2980 | -- | pF |
| Coss | Output Capacitance | | -- | 790 | -- | pF |
| Crss | Reverse Transfer Capacitance | | -- | 49 | -- | pF |
| Rg | Gate resistance | VGS=0V, VDS=0V,f=1.0MHz | -- | 1.8 | -- | Ω |
| Switching Times | | | | | | |
| td(on) | Turn-on Delay Time | VGS=10V,VDS=50V, ID=1A,RGEN=6Ω | -- | 29 | -- | nS |
| tr | Turn-on Rise Time | | -- | 19 | -- | nS |
| td(off) | Turn-Off Delay Time | | -- | 46 | -- | nS |
| tf | Turn-Off Fall Time | | -- | 84 | -- | nS |
| Qg | Total Gate Charge | VGS=10V, VDS=50V, ID=8.5A | -- | 39.5 | -- | nC |
| Qgs | Gate-Source Charge | | -- | 9.0 | -- | nC |
| Qgd | Gate-Drain Charge | | -- | 12.3 | -- | nC |
| Source-Drain Diode Characteristics | | | | | | |
| ISD | Source-Drain Current(Body Diode) | | -- | -- | 110 | A |
| VSD | Forward on Voltage | VGS=0V,IS=1A | -- | 0.7 | 1.1 | V |
| trr | Reverse Recovery Time | IF=1A , dl/dt=100A/μs , | -- | -- | -- | ns |
| Qrr | Reverse Recovery Charge | TJ=25°C | -- | -- | -- | nc |

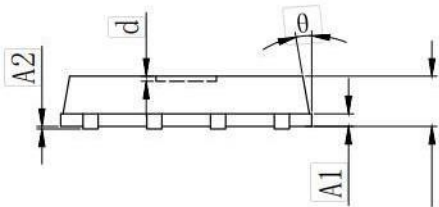
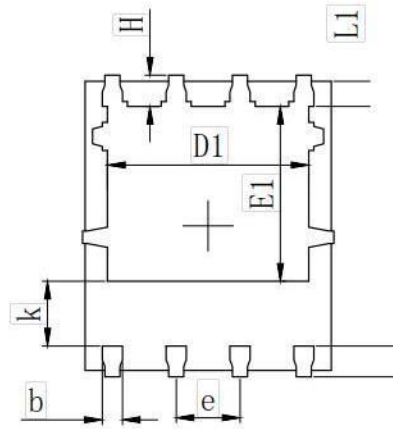
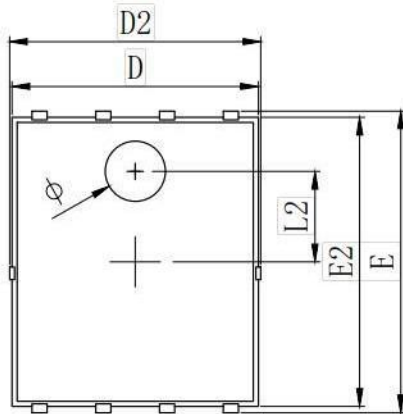
Notes 1.The maximum current rating is package limited.

Notes 2.Repetitive Rating: Pulse width limited by maximum junction temperature

Notes 3.EAS condition: TJ=25°C


Fig.1 Typical Output Characteristics

Fig.2 Normalized $R_{DS(on)}$ vs. T_J

Fig.3 Normalized V_{th} vs. T_J

Fig.4 Gate Charge Waveform

Fig.5 Turn-On Resistance vs. I_D

Fig.6 Turn-On Resistance vs. V_{GS}


Fig.7 Continuous Drain Current vs. T_C

Fig.8 Capacitance Characteristics

Fig.9 Normalized Transient Impedance

Fig.10 Maximum Safe Operation Area

Fig.11 Switching Time Waveform

Fig.12 EAS Waveform

•Dimensions (DFN5×6)


| SYMBOL | MILLIMETER | | |
|--------|------------|-------|-------|
| | MIN | Typ. | MAX |
| A | 0.900 | 1.000 | 1.100 |
| A1 | 0.254 REF. | | |
| A2 | 0~0.05 | | |
| D | 4.824 | 4.900 | 4.976 |
| D1 | 3.910 | 4.010 | 4.110 |
| D2 | 4.924 | 5.000 | 5.076 |
| E | 5.924 | 6.000 | 6.076 |
| E1 | 3.375 | 3.475 | 3.575 |
| E2 | 5.674 | 5.750 | 5.826 |
| b | 0.350 | 0.400 | 0.450 |
| e | 1.270 TYP. | | |
| L | 0.534 | 0.610 | 0.686 |
| L1 | 0.424 | 0.500 | 0.576 |
| L2 | 1.800 REF. | | |
| k | 1.190 | 1.290 | 1.390 |
| H | 0.549 | 0.625 | 0.701 |
| θ | 8° | 10° | 12° |
| Ø | 1.100 | 1.200 | 1.300 |
| d | | | 0.100 |


Disclaimer:

The information provided in this document is believed to be accurate and reliable. however, Shenzhen Core Control Electronics Technology Co., Ltd. does not assume any responsibility for the following consequences Do not consider the use of such information or use beyond its scope.

The information mentioned in this document may be changed at any time without notice.

The products and information provided in this document do not infringe patents. Shenzhen Core Control Electronics Technology Co., Ltd. assumes no responsibility for any infringement of any other rights of third parties. The result of using such products and information.

This document is the second version issued on June 10, 2022. This document replaces and Replace all previously provided information.

 It is a registered trademark of Shenzhen Core Control Electronics Technology Co., Ltd.

Copyright © 2017 Shenzhen Core Control Electronics Technology Co., Ltd. all rights reserved.

X-ON Electronics

Largest Supplier of Electrical and Electronic Components

Click to view similar products for [MOSFET](#) category:

Click to view products by [AGM-Semi](#) manufacturer:

Other Similar products are found below :

[IRFD120](#) [JANTX2N5237](#) [BUK455-60A/B](#) [MIC4420CM-TR](#) [VN1206L](#) [NDP4060](#) [SI4482DY](#) [IPS70R2K0CEAKMA1](#) [SQD23N06-31L-GE3](#)
[TK16J60W,S1VQ\(O](#) [2SK2614\(TE16L1,Q\)](#) [DMN1017UCP3-7](#) [DMN1053UCP4-7](#) [SQJ469EP-T1-GE3](#) [NTE2384](#) [DMC2700UDMQ-7](#)
[DMN2080UCB4-7](#) [DMN61D9UWQ-13](#) [US6M2GTR](#) [DMN31D5UDJ-7](#) [DMP22D4UFO-7B](#) [DMN1006UCA6-7](#) [DMN16M9UCA6-7](#)
[STF5N65M6](#) [IRF40H233XTMA1](#) [STU5N65M6](#) [DMN6022SSD-13](#) [DMN13M9UCA6-7](#) [DMTH10H4M6SPS-13](#) [DMN2990UFB-7B](#)
[IPB80P04P405ATMA2](#) [2N7002W-G](#) [MCAC30N06Y-TP](#) [MCQ7328-TP](#) [NTMC083NP10M5L](#) [BXP7N65D](#) [BXP4N65F](#) [AOL1454G](#)
[WMJ80N60C4](#) [BXP2N20L](#) [BXP2N65D](#) [BXT1150N10J](#) [BXT1700P06M](#) [TSM60NB380CP](#) [ROG](#) [RQ7L055BGTGR](#) [DMNH15H110SK3-13](#)
[SLF10N65ABV2](#) [BSO203SP](#) [BSO211P](#) [IPA60R230P6](#)