

**VD series**

■ STANDARD RATINGS

VDC (SV)	Cap (μF)	Size ΦDxL(mm)	ESR (mΩ, 20°C, 100kHz) (max.)	Rated ripple current (mA <sub>rms</sub> /105°C, 100kHz)	Leakage Current (μA)(max.)	Part Number
35 (41)	22	5×10	60	1000	500	SVD1VM220D10E00RAXXX
	33	5×10	60	1100	500	SVD1VM330D10E00RAXXX
		6.3×8	60	1100	500	SVD1VM330E08E00RAXXX
	47	6.3×8	50	1500	500	SVD1VM470E08E00RAXXX
		6.3×6	80	1100	500	SVD1VM470E06E00RAXXX
	100	6.3×11	60	2000	700	SVD1VM101E11E00RAXXX
		8×9	60	2000	700	SVD1VM101F09E00RAXXX
	120	8×9	50	2100	840	SVD1VM121F09E00RAXXX
	220	8×11	50	2400	1540	SVD1VM221F11E00RAXXX
		10×10	80	2100	1540	SVD1VM221G10E00RAXXX
	330	10×12	50	2700	2310	SVD1VM331G12E00RAXXX
	470	10×13	50	3000	3290	SVD1VM471G13E00RAXXX
560	10×14	50	3200	3920	SVD1VM561G14E00RAXXX	
50 (58)	22	6.3×6	80	800	500	SVD1HM220E06E00RAXXX
	33	6.3×8	80	850	500	SVD1HM330E08E00RAXXX
	47	6.3×9	80	1400	500	SVD1HM470E09E00RAXXX
	100	8×9	60	1800	1000	SVD1HM101F09E00RAXXX
		8×11	50	2000	1000	SVD1HM101F11E00RAXXX
	120	8×11	50	2000	1200	SVD1HM121F11E00RAXXX
220	10×12	50	2300	2200	SVD1HM221G12E00RAXXX	
63 (73)	10	6.3×6	100	450	500	SVD1JM100E06E00RAXXX
	22	6.3×6	100	450	500	SVD1JM220E06E00RAXXX
	47	8×11	60	1300	592	SVD1JM470F11E00RAXXX
	56	8×11	60	1400	706	SVD1JM560F11E00RAXXX
	100	10×12	60	1600	1260	SVD1JM101G12E00RAXXX

※ Specifications subject to change without notice.

**MK series**

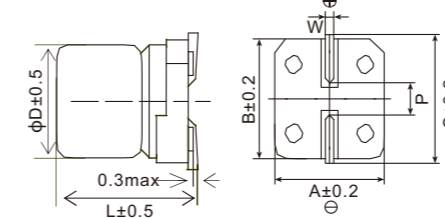
- Endurance: +105°C 2,000 ~ 3,000 hours
- Designed for surface mounting on high density PC board
- RoHS Compliant



■ SPECIFICATIONS

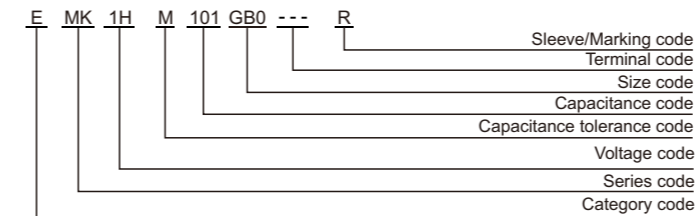
Items	Characteristics	
Category Temperature Range	-40~+105°C(6.3~450 V <sub>dc</sub> )	
Rated Voltage Range	6.3~450 V <sub>dc</sub>	
Capacitance Tolerance	±20%(M) (at 20°C, 120Hz)	
Leakage Current	6.3~100 V <sub>dc</sub>	160~450 V <sub>dc</sub>
	I ≤ 0.01CV or 3μA, whichever is greater. (2 minutes) I ≤ 0.04CV + 100μA (1 minute)	
Where, I: Max. leakage current (μA), C: Nominal capacitance (μF), V: Rated voltage (V) (at 20°C)		
Dissipation Factor (tanδ)	Rated Voltage(V <sub>dc</sub> )	6.3 10 16 25 35 50 63 80 100 160~250 400~450
	tanδ (max.)	D80~E80 0.30 0.24 0.20 0.16 0.14 0.12 0.12 0.12 0.12 - 0.20 EB0~MN0 0.40 0.30 0.26 0.16 0.14 0.12 0.12 0.12 0.12 0.15 0.20 (at 20°C, 120Hz)
Low Temperature Characteristics (Max. Impedance Ratio)	Rated Voltage(V <sub>dc</sub> )	6.3 10 16 25 35 50 63 80 100 160~250 400~450
	Z(-25°C)/Z(+20°C)	4 3 2 2 2 2 2 2 2 6 6
	Z(-40°C)/Z(+20°C)	10 8 6 4 3 3 3 3 3 10 18 (at 120Hz)
Endurance	The specifications listed below shall be met when the capacitors are restored to 20°C after rated voltage is applied for a specified period of time at 105°C.	
	Load Life	2,000 hours( 160~450V <sub>dc</sub> : 3,000 hours)
	Capacitance Change	≤±20% of the initial value
	Dissipation Factor (tanδ)	≤200% of the initial specified value
	Leakage Current	≤The initial specified value
Shelf Life	The following specifications shall be satisfied when the capacitors are restored to 20°C after leaving them under no load at 105°C for 1,000 hours (6.3~100V <sub>dc</sub> : 500 hours).	
	Capacitance Change	≤±20% of the initial value
	Dissipation Factor (tanδ)	≤200% of the initial specified value
	Leakage Current	≤200% of the initial specified value

■ DIMENSIONS[mm]



Size code	D	L	A	B	C	W	P
D80	5	7.7	5.3	5.3	5.9	0.5~0.8	1.4
E80	6.3	7.7	6.6	6.6	7.2	0.5~0.8	1.9
EB0	6.3	10.5	6.6	6.6	7.2	0.5~0.8	1.9
FB0	8	10.5	8.3	8.3	9.0	0.7~1.1	3.1
FD0	8	12.5	8.3	8.3	9.0	0.7~1.1	3.1
FE0	8	13.5	8.3	8.3	9.0	0.7~1.1	3.1
FG0	8	15.5	8.3	8.3	9.0	0.7~1.1	3.1
GB0	10	10.5	10.3	10.3	11.0	0.7~1.1	4.5
GD0	10	12.5	10.3	10.3	11.0	0.7~1.1	4.5
GE0	10	13.5	10.3	10.3	11.0	0.7~1.1	4.5
GH0	10	16.5	10.3	10.3	11.0	0.7~1.1	4.5
WE0	12.5	13.5	13.0	13.0	13.7	1.0~1.3	4.5
WG5	12.5	16.0	13.0	13.0	13.7	1.0~1.3	4.5
WM5	12.5	21.0	13.0	13.0	13.7	1.0~1.3	4.5
LH0	16	16.5	17.0	17.0	18.0	1.0~1.3	6.5
LN0	16	21.5	17.0	17.0	18.0	1.0~1.3	6.5
MH0	18	16.5	19.0	19.0	20.0	1.0~1.3	6.5
MN0	18	21.5	19.0	19.0	20.0	1.0~1.3	6.5

■ PART NUMBERING SYSTEM



■ RATED RIPPLE CURRENT MULTIPLIERS

Frequency correction factor for ripple current

Rated voltage(V <sub>dc</sub> )	Freq.(Hz)			
	120	1k	10k	100k
6.3~450	0.50	0.80	0.90	1.00





## X-ON Electronics

Largest Supplier of Electrical and Electronic Components

*Click to view similar products for [Aluminium Electrolytic Capacitors - SMD category](#):*

*Click to view products by [Aihua manufacturer](#):*

Other Similar products are found below :

[EEV-FK1E332W](#) [ULV2H1R8MNL1GS](#) [MAL214099813E3](#) [CA025M4R70REB-0405](#) [HUB1800-S](#) [RYK-50V101MG5TT-FL](#)  
[107AXZ016MQ5](#) [RVJ-50V101MH10U-R](#) [EMVH101GRA221MMN0S](#) [MAL214097402E3](#) [MAL215375471E3](#) [MAL224699909E3](#)  
[MAL224699813E3](#) [MAL215099818E3](#) [AEH1213221M050R](#) [AEH1010331M025R](#) [AEA1010102M016R](#) [AEH1012471M016R](#)  
[MAL213967339E3](#) [ZSC00AF2211EARL](#) [VB1E100MB054000CE0](#) [VD4.7UF400V90RV0094](#) [FZ470UF25V90RV0113](#)  
[GVT1H476M0608CNVC](#) [GVE1V226M0506CNVC](#) [GVT1H226M0606CNVC](#) [ATB106M050D058](#) [ATB476M050F065](#) [ATB476M035E058](#)  
[ATB107M016E058](#) [ATB107M035E077](#) [EMHL250ARA221MHA0G](#) [ATB477M016F102](#) [EMK1EM331FB0D00R](#) [EMF1CM221FB0D00R](#)  
[EMF1CM331FB0D00R](#) [EMF1CM471FB0D00R](#) [EMK1JM101GB0D00R](#) [EMK1AM102GB0D00R](#) [EMK1HM221GB0D00R](#)  
[DV221M6R3E055ETR](#) [DV221M025E077ETR](#) [RV331M025F105ETR](#) [HV100M035B055ETR](#) [VH1J101MG105000CE0](#)  
[VD1H221MG105000CE0](#) [VD1C100MB054000CE0](#) [VD2A100ME077000CE0](#) [RVT1A101M0505](#) [VP1C221M0605](#)