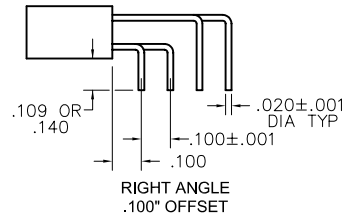
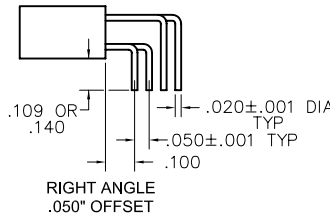
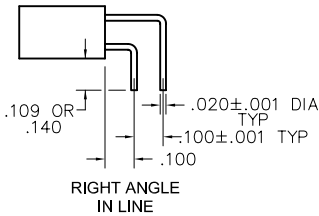
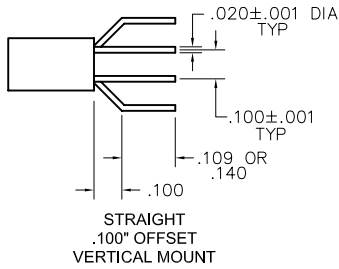


**LEAD CONFIGURATION OPTIONS**



**PLUG:** MA-2F1-010-325-A5200  
**RECEPTACLE:** MA-241-010-261-A53WA  
 XX-XXX-XXX-XXX-XXXXX

**PLUG**

**RECEPTACLE**

**SERIES**

MA .050" Microminiature Strip Connector | MA .050" Microminiature Strip Connector

**BODY**

2 2-Row	2 2-Row
BODY STYLE: (Material: Polyphenylene sulfide)	BODY STYLE: (Material: Polyphenylene sulfide)
11 Plug, straight, with mounting holes	21 Receptacle, straight, with mounting holes
31 Plug, straight, without mounting holes	41 Receptacle, straight, without mounting holes
51 Plug, right angle, .050" offset, with mounting holes	61 Receptacle, right angle, .050" offset, with mounting holes
71 Plug, right angle, .100" offset, with mounting holes	81 Receptacle, right angle, .100" offset, with mounting holes
91 Plug, right angle, .050" offset, without mounting holes	A1 Receptacle, right angle, .050" offset, without mounting holes
B1 Plug, right angle, .100" offset, without mounting holes	C1 Receptacle, right angle, .100" offset, without mounting holes
D1 Plug, right angle, in line, with mounting holes	E1 Receptacle, right angle, in line, with mounting holes
F1 Plug, right angle, in line, without mounting holes	G1 Receptacle, right angle, in line, without mounting holes
H1 Plug, straight, .100" offset, without mounting holes	J1 Receptacle, straight, .100" offset, without mounting holes

**SIZE**

XXX 004- 128 | XXX 004-128  
 Note: Maximum number of contacts is reduced when using hardware or mounting holes. See dimension chart on M-25.

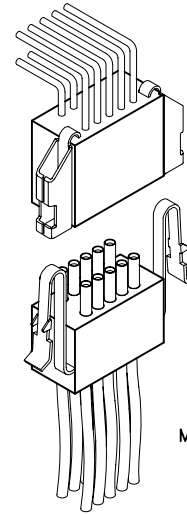
**CONTACTS**

<p><b>TYPE CONTACTS/TERMINATIONS:</b></p> <p>11 Pin, straight, solder cup</p> <p>12 Pin, straight, PCB leads, .109"</p> <p>13 Pin, straight, PCB leads, .140"</p> <p>14 Pin, straight, .500" pigtails (.018 dia)</p> <p>15 Pin, straight, 1.000" pigtails (.018 dia)</p> <p>16 Pin, straight, crimped wire</p> <p>32 Pin, right angle, PCB leads, .109"</p> <p>33 Pin, right angle, PCB leads, .140"</p> <p><b>PLATING OPTIONS:</b></p> <p>1 50 μ" Au contacts (crimp wire)</p> <p>3 50 μ" Au contacts: 10 μ" Au terminations (solder cup, pigtail, PCB leads)</p> <p>5 50 μ" Au contacts; Sn/Pb alloy terminations (pigtail, PCB leads) ☒</p> <p>7 50 μ" Au contacts; SAC305 terminations (pigtail, PCB leads)</p>	<p><b>TYPE CONTACTS/TERMINATIONS:</b></p> <p>21 Socket, straight, solder cup</p> <p>22 Socket, straight, PCB leads, .109"</p> <p>23 Socket, straight, PCB leads, .140"</p> <p>24 Socket, straight, .500" pigtails (.018 dia)</p> <p>25 Socket, straight, 1.000" pigtails (.018 dia)</p> <p>26 Socket, straight, crimped wire</p> <p>43 Socket, right angle, PCB leads, .109"</p> <p>44 Socket, right angle, PCB leads, .140"</p> <p><b>PLATING OPTIONS:</b></p> <p>1 50 μ" Au contacts (crimp wire)</p> <p>3 50 μ" Au contacts: 10 μ" Au terminations (solder cup, pigtail, PCB leads)</p> <p>5 50 μ" Au contacts; Sn/Pb alloy terminations (pigtail, PCB leads) ☒</p> <p>7 50 μ" Au contacts; SAC305 terminations (pigtail, PCB leads)</p>
---	---

**HARDWARE**

<p><b>STYLE OF HARDWARE:</b></p> <p>A00 None</p> <p>ABC Latch box, side mounted (centered)* See page M-27</p> <p>A50 Latch boxes (two end cavities). See page M-27**</p> <p>A52 Latch boxes (two end cavities). See page M-27**</p> <p>A54 Latch boxes (two end cavities). See page M-27**</p> <p>A56 Latch boxes (two end cavities). See page M-27**</p> <p>A64 One guide hole (centered)*</p> <p>A65 One guide hole (first cavity)</p> <p>A66 One guide hole (last cavity)</p> <p>A68 Two guide holes (first &amp; last cavity)</p> <p>AHX One guide hole (cavity #2 - #9)</p> <p><b>POLARIZATION / WIRING:</b></p> <p>00 None</p> <p>XX For wiring codes, see page MA-3 &amp; MA-4</p>	<p><b>STYLE OF HARDWARE:</b></p> <p>A00 None</p> <p>ALC Latch spring, side mounted (centered)* See page M-27</p> <p>A51 Latch springs, (two end cavities). See page M-27**</p> <p>A53 Latch springs, (two end cavities). See page M-27**</p> <p>A55 Latch springs, (two end cavities). See page M-27**</p> <p>A57 Latch springs, (two end cavities). See page M-27**</p> <p>A61 One guide pin (centered)*</p> <p>A62 One guide pin (first cavity)</p> <p>A63 One guide pin (last cavity)</p> <p>A67 Two guide pins (first &amp; last cavity)</p> <p>APX One guide pin (cavity #2 - #9)</p> <p><b>POLARIZATION / WIRING:</b></p> <p>00 None</p> <p>XX For wiring codes, see page MA-3 &amp; MA-4</p>
---	---

\* = To determine location, divide the total number of cavities (in one row) by two and round to the next whole number, if result is a fraction. See page M-28.  
 \*\* = Not available with mounting holes.  
 See MA strip guidelines, page M-28, for location examples & visual clarification.  
 Connector part number must have even number of contacts.  
 Consult factory for non-standard requirements.  
 ☒ = Option not RoHS compliant



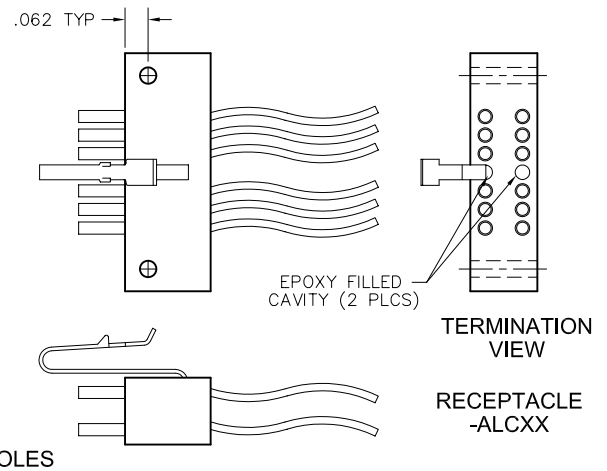
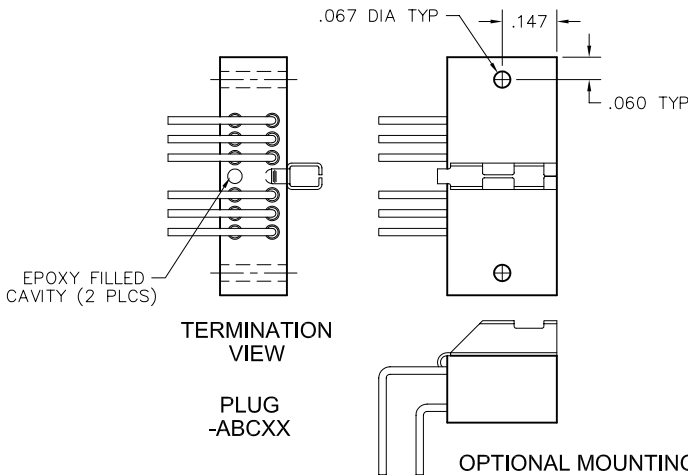
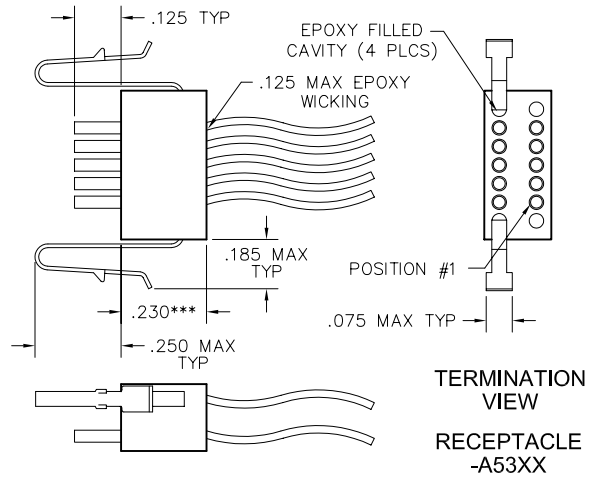
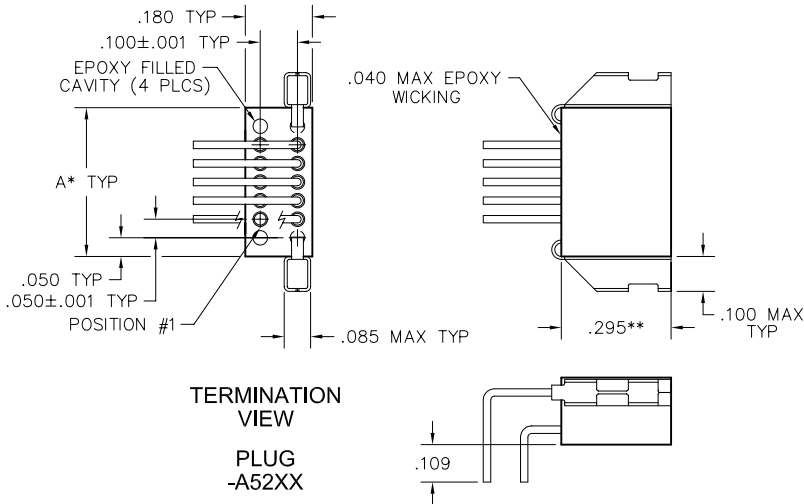
MA-241-010-261-A53WA

# 2 · ROW Strip Connectors Board to Cable

.050"

**MA-2**

4 thru 128 Contacts



### DIMENSIONS

To determine connector length (Dim "A"):	
Multiply the number of cavities in one row by .050	. "
Add fixed end lengths (constant, .025" x 2)	0.05"
Add .085" for each mounting hole	. "
Total Length:	. "

### Notes:

Length over 2" may require support to insure alignment

\* = Maximum length is 3.420". Maximum number of contacts must be reduced to accommodate hardware and mounting holes.

\*\* = For cable applications, .295" becomes .390"

\*\*\* = For solder cup or board mount applications, .230" becomes .135"



## Wire Codes

### NEMA HP3-EXBEB (Formerly M16878/4-24 TFE 7 strand)

	6"	12"	18"	24"	30"	36"	42"	48"	54"	60"	66"	72"	84"	96"	108"	120"
MIL-STD-681*	WA	WB	WC	UD	UE	WD	UG	UH	UJ	UK	UL	UM	UN	UP	UQ	UR
WHITE	WE	WF	WG	VD	VE	WH	VG	VH	VJ	VK	VL	VM	VN	VP	VQ	VR
YELLOW	WJ	WK	WL			WM										

### NEMA HP3-EXBDB (Formerly M16878/4-26 TFE 7 strand)

	6"	12"	18"	24"	30"	36"	42"	48"	54"	60"	66"	72"	84"	96"	108"	120"
MIL-STD-681*	WN	WP	WQ	YD	YE	WR	YG	YH	YJ	YK	YL	YM	YN	YP	YQ	YR
WHITE	WS	WT	WU	ZD	ZE	WV	ZG	ZH	ZJ	ZK	ZL	ZM	ZN	ZP	ZQ	ZR
YELLOW	WW	WX	WY			WZ										

### NEMA HP3-EXBCB (Formerly M16878/4-28 TFE 7 strand)

	6"	12"	18"	24"	30"	36"	42"	48"	54"	60"	66"	72"	84"	96"	108"	120"
MIL-STD-681*	XA	XB	XC	1D	1E	XD	1G	1H	1J	1K	1L	1M	1N	1P	1Q	1R
WHITE	XE	XF	XG	2D	2E	XH	2G	2H	2J	2K	2L	2M	2N	2P	2Q	2R
YELLOW	XJ	XK	XL			XM										

### TWISTED PAIR per NEMA WC27500-XXRC2U00 (SAE AS22759/11)

	6"	12"	18"	24"	30"	36"	42"	48"	54"	60"	66"	72"	84"	96"	108"	120"
24 AWG	AA	AB	AC	AD	AE	AF	AG	AH	AJ	AK	AL	AM	AN	AP	AQ	AR
26 AWG	BA	BB	BC	BD	BE	BF	BG	BH	BJ	BK	BL	BM	BN	BP	BQ	BR

### TWISTED PAIR per NEMA WC27500-XXSC2U00 (SAE AS22759/33)\*\*\* ☒

	6"	12"	18"	24"	30"	36"	42"	48"	54"	60"	66"	72"	84"	96"	108"	120"
24 AWG	JA	JB	JC	JD	JE	JF	JG	JH	JJ	JK	JL	JM	JN	JP	JQ	JR
26 AWG	KA	KB	KC	KD	KE	KF	KG	KH	KJ	KK	KL	KM	KN	KP	KQ	KR

For twisted pair wire connect charts, see page MA-9  
 Twisted pair wire not available on MA, MC or Hybrid connectors

\* = Connectors with more than 100 contacts will repeat color code after 100 colors.

\*\*\* = Per M83513, corrosion has been experienced on connectors that are pre-wired with 22759/33 and stored in sealed environments.  
 Caution should be exercised when using this wire.

☒ = Option not RoHS compliant

## Wire Codes

### SAE AS22759/11-24

	6"	12"	18"	24"	30"	36"	42"	48"	54"	60"	66"	72"	84"	96"	108"	120"
M83513**	5A	5B	5C	5D	5E	5F	5G	5H	5J	5K	5L	5M	5N	5P	5Q	5R
MIL-STD-681*	CA	CB	CC	CD	CE	CF	CG	CH	CJ	CK	CL	CM	CN	CP	CQ	CR
WHITE	DA	DB	DC	DD	DE	DF	DG	DH	DJ	DK	DL	DM	DN	DP	DQ	DR

### SAE AS22759/11-26

	6"	12"	18"	24"	30"	36"	42"	48"	54"	60"	66"	72"	84"	96"	108"	120"
M83513**	6A	6B	V1	6D	6E	V2	6G	6H	6J	6K	6L	Y6	6N	6P	6Q	6R
MIL-STD-681*	X3	X4	W3	ED	EE	W4	EG	EH	EJ	EK	EL	EM	EN	EP	EQ	ER
WHITE	X1	X2	W1	FD	FE	W2	FG	FH	FJ	FK	FL	Y5	FN	FP	FQ	FR

### SAE AS22759/33-24\*\*\* ☒

	6"	12"	18"	24"	30"	36"	42"	48"	54"	60"	66"	72"	84"	96"	108"	120"
M83513**	LA	LB	LC	LD	LE	LF	LG	LH	LJ	LK	LL	LM	LN	LP	LQ	LR
WHITE	MA	MB	MC	MD	ME	MF	MG	MH	MJ	MK	ML	MM	MN	MP	MQ	MR

### SAE AS22759/33-26\*\*\* ☒

	6"	12"	18"	24"	30"	36"	42"	48"	54"	60"	66"	72"	84"	96"	108"	120"
M83513**	NA	NB	Y3	ND	NE	Y4	NG	NH	NJ	NK	NL	Y8	NN	NP	NQ	NR
WHITE	PA	PB	Y1	PD	PE	Y2	PG	PH	PJ	PK	PL	Y7	PN	PP	PQ	PR

\* = Connectors with more than 100 contacts will repeat color code after 100 colors.

\*\* = Wire colors per M83513 are ten solid colors repeating.

\*\*\* = Per M83513, corrosion has been experienced on connectors that are pre-wired with 22759/33 and stored in sealed environments.

Caution should be exercised when using this wire.

☒ = Option not RoHS compliant

## X-ON Electronics

Largest Supplier of Electrical and Electronic Components

*Click to view similar products for [Rectangular MIL Spec Connectors](#) category:*

*Click to view products by [AirBorn](#) manufacturer:*

Other Similar products are found below :

[891-011-15SA2-BSST](#) [CTS-S16/16](#) [65002-062](#) [CY4602-000](#) [732-8020-01](#) [77058-22-55PN](#) [81542-20](#) [86.030.0053.0](#) [1241346-1](#) [RM252-020-311-2900](#) [DMC-M 08-16 SA](#) [1589051-4](#) [MSO34MPK1E1](#) [BACC65CAMA](#) [BACC65CP1PN](#) [BACI10BC0816PNBA](#) [HSB-D4S03DM222X](#) [2217548-1](#) [891-006-9PS-BST1T](#) [891-009-15SA2-BRT1T](#) [27963-20T12](#) [SIM2N40NC3](#) [SIM2S100A](#) [1604996-2](#) [SMD25PN90L-4055](#) [1900ND08S1B00A](#) [22628-10-6P-791](#) [RE04-212S](#) [M32139/03-G05SN](#) [CTD160E01F-6148](#) [CTJ112E03B](#) [CTJ122E02D-8000](#) [CTJ-3D-12](#) [CTJ920E06N-513](#) [CTJ920E12N-513](#) [CTL-16-090](#) [RM300-000-581-0000](#) [CY4600-000](#) [CY4601-000](#) [38111-14-15SN](#) [38112-14-15PN](#) [MMA23-0111R1](#) [MMD25-0071P1](#) [33516062020](#) [33526M11-08PE](#) [DMC-M99-01AN](#) [Y59113WE20PNV00300](#) [ZPF000000000106310](#) [105979-31](#) [EN4165M01AD0G0](#)