



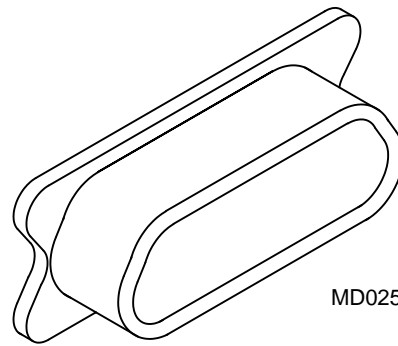
ESD Dust Covers

.050"

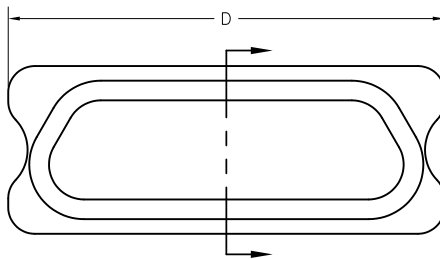
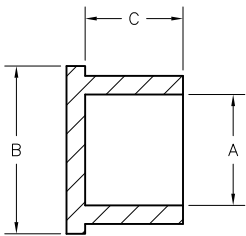
9 thru 100 Contacts

Rugged Metal
Low Profile Plastic

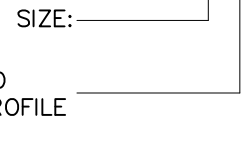
MD



MD025RS



EXAMPLE: MD025RS
MDXXXXX



- R – RUGGED
- L – LOW PROFILE
- P – PLUG
- S – RECEPTACLE

Material: Carbon filled polypropylene
 Static Decay meets MIL-PRF-81705D
 Surface Resistivity per ASTM D 257-99(2005): $<1.0 \times 10^{12}$ ohms/square

RUGGED PLASTIC

| SIZE | CONTACT ROWS | DIMENSIONS | | | | | | | | | |
|------|--------------|------------|---------|---------|------|------|------|-------|-------|-------------|-----------|
| | | A | | B | | C | | D | | PART NUMBER | |
| | | PLUG | RCPT | PLUG | RCPT | PLUG | RCPT | PLUG | RCPT | PLUG | RCPT |
| 9 | 2 | .176 | .238 | .298 | .360 | .195 | .215 | .475 | .460 | MD009RP | MD009RS |
| 15 | | | | | | | | .625 | .610 | MD015RP | MD015RS |
| 21 | | | | | | | | .775 | .760 | MD021RP | MD021RS |
| 25 | | | | | | | | .875 | .860 | MD025RP | MD025RS |
| 31 | | | | | | | | 1.025 | 1.010 | MD031RP | MD031RS |
| 37 | | | | | | | | 1.175 | 1.160 | MD037RP | MD037RS |
| 51 | | | | | | | | 1.525 | 1.510 | MD051RP-2 | MD051RS-2 |
| 51 | | | | | | | | 3 | .219 | .281 | .340 |
| 69 | 1.425 | 1.410 | MD069RP | MD069RS | | | | | | | |
| 100 | 1.500 | 1.615 | MD100RP | MD100RS | | | | | | | |

LOW PROFILE PLASTIC

| SIZE | CONTACT ROWS | DIMENSIONS | | | | | | | | | | | | | | | | |
|------|--------------|------------|------|------|------|------|------|-------|-------|-------------|---------|------|--|--|-------|-------|---------|---------|
| | | A | | B | | C | | D | | PART NUMBER | | | | | | | | |
| | | PLUG | RCPT | PLUG | RCPT | PLUG | RCPT | PLUG | RCPT | PLUG | RCPT | | | | | | | |
| 9 | 2 | .125 | .205 | .256 | .315 | .210 | .195 | .400 | .430 | MD009LP | MD009LS | | | | | | | |
| 15 | | | | | | | | .550 | .580 | MD015LP | MD015LS | | | | | | | |
| 21 | | | | | | | | .700 | .730 | MD021LP | MD021LS | | | | | | | |
| 25 | | | | | | | | .800 | .830 | MD025LP | MD025LS | | | | | | | |
| 31 | | | | | | | | .950 | .980 | MD031LP | MD031LS | | | | | | | |
| 37 | | | | | | | | 1.100 | 1.130 | MD037LP | MD037LS | | | | | | | |
| 51 | | | | | | | | 3 | .168 | .247 | .298 | .360 | | | 1.050 | 1.080 | MD051LP | MD051LS |
| 51 | | | | | | | | | | | | | | | 1.050 | 1.080 | MD051LP | MD051LS |

Not for use on receptacles with grounding fingers

X-ON Electronics

Largest Supplier of Electrical and Electronic Components

Click to view similar products for [D-Sub MIL Spec Connectors](#) category:

Click to view products by [AirBorn](#) manufacturer:

Other Similar products are found below :

[M85049/50-5F](#) [MDM-21PH046F](#) [850-056-0812](#) [1218697-4](#) [1484349-1](#) [17D25HV](#) [1996840-1](#) [243082-15](#) [1757682-1](#) [17D-E51218-1](#)
[17SDA15S](#) [1883533-1](#) [1883886-1](#) [1883889-1](#) [192900-0377](#) [M24308/8-347](#) [M83513/03-E09C](#) [443961-3](#) [5-1218949-1](#) [550-031NF1R6K](#) [3-](#)
[1236089-2](#) [550E001NF1R3J0L](#) [DB121073-56](#) [DC121073157](#) [443869-3](#) [443869-4](#) [443869-5](#) [550S004NF1R1B0F03](#) [557E283NF1A06](#) [527-](#)
[019NF0303R2K1F](#) [5-446405-1](#) [550-031NF1R2E](#) [550E003M2R9J0F04](#) [550E003M3R9J0F05](#) [550E024M104R9J0](#) [550E024NF102R3J0B](#)
[550E039NF1R3J1-02](#) [550S003M3R9B0F05](#) [550S004M4R7M0F04](#) [550S004NF1R1B1F02](#) [550S008M3F0K0F04](#) [550S086M5R3J0L](#)
[550S100NF3F0E](#) [550T001M2R7E0L](#) [550T001NF1F0B1L](#) [550T001NF1R1K0G](#) [550T001NF1R3K0G](#) [550T001NF1R4K0L](#)
[550T001NF2R2K0L](#) [550T001NF3R9B1L](#)