

**PLUG:** MK-252-031-335-220S  
**RECEPTACLE:** MK-262-031-445-220S  
 XX-XXX-XXX-XXX-XXXX-XXX  
 |     |     |     |     |  
 BODY CONTACTS OPTIONS  
 SERIES SIZE HARDWARE

### PLUG

### RECEPTACLE

#### SERIES

MK .050" Rugged Metal PC Board Mount Connector  
 ML .050" Rugged Plastic PC Board Mount Connector  
 (MK & ML mate with MK, ML, MM, MN, receptacles)

#### BODY

- 2 2-Row (Sizes 9 thru 37)
  - 3 3-Row (Size 51 & 69\*\*\*)
  - 4 4-Row (Size 100)
- BODY STYLE:
- 5 Plug, right angle, narrow footprint, w/ mounting holes
- BODY MATERIAL:
- 1 Polyphenylene Sulfide (ML only)
  - 2 Electroless nickel shell w/ PPS insulator
  - 3 Electrodeposited cadmium shell w/ PPS insulator
  - 4 Hard anodized black shell w/ PPS insulator
  - 5 Stainless steel shell w/ PPS insulator

#### SIZE

XXX 009, 015, 021, 025, 031, 037, 051, 069\*\*\*, 100

#### CONTACTS

- TYPE CONTACTS/TERMINATIONS:
- 32 Pin, right angle, PCB leads, .109"
  - 33 Pin, right angle, PCB leads, .140"
  - 34 Pin, right angle, PCB leads, .172"

- PLATING OPTIONS:
- 3 50 μ" Au contacts: Au terminations
  - 5 50 μ" Au contacts: Sn/Pb alloy terminations
  - 7 50 μ" Au contacts: SAC305 terminations

#### HARDWARE

- STYLE OF HARDWARE:
- 00 None
  - 22 Two fixed jacknuts (62\*)
  - 41 Two turning jackscrews, allen head, retaining ring\*\*\*\*(81\*)
  - 99 Keying hardware, see options below (Body material 2, 3 and 4 only)
- POLARIZATION / WIRING:
- 0R Reversed body polarization
  - 0S Standard body polarization

#### OPTIONS

- KPXX Two fixed jacknuts (KN\*)
- 94P Mil-Spec footprint (size 100 only), standard body polarization
- 0B7 #2-56 threaded inserts, standard body polarization
- 0BJ Mil-Spec footprint (size 100 only) with #2-56 threaded inserts, standard body polarization
- 0H7 #4-40 threaded inserts (size 100 only), standard body polarization
- 0H6 Mil-Spec footprint (size 100 only) with #4-40 threaded inserts, standard body polarization

#### NOTES

- See page MA-6 for keying options
- \* = Use numbers in parenthesis when ordering size 100.
  - \*\*\* = 69 position connectors are available in metal only.
  - \*\*\*\* = Connector body has no mounting holes.
  - = Option not RoHS compliant

#### SERIES

MK .050" Rugged Metal PC Board Mount Connector  
 ML .050" Rugged Plastic PC Board Mount Connector  
 (MK & ML mate with MK, ML, MM, MN plugs)

#### BODY

- 2 2-Row (Sizes 9 thru 37)
  - 3 3-Row (Size 51 & 69\*\*\*)
  - 4 4-Row (Size 100)
- BODY STYLE:
- 6 Receptacle, right angle, narrow footprint, w/ mounting holes
- BODY MATERIAL:
- 1 Polyphenylene Sulfide (ML only)
  - 2 Electroless nickel shell w/ PPS insulator
  - 3 Electrodeposited cadmium shell w/ PPS insulator
  - 4 Hard anodized black shell w/ PPS insulator
  - 5 Stainless steel shell w/ PPS insulator

#### SIZE

XXX 009, 015, 021, 025, 031, 037, 051, 069\*\*\*, 100

#### CONTACTS

- TYPE CONTACTS/TERMINATIONS:
- 43 Socket, right angle, PCB leads, .109"
  - 44 Socket, right angle, PCB leads, .140"
  - 45 Socket, right angle, PCB leads, .172"

- PLATING OPTIONS:
- 3 50 μ" Au contacts: Au terminations
  - 5 50 μ" Au contacts: Sn/Pb alloy terminations
  - 7 50, u" Au contacts: SAC305 terminations

#### HARDWARE

- STYLE OF HARDWARE:
- 00 None
  - 22 Two fixed jacknuts (62\*)
  - 41 Two turning jackscrews, allen head, retaining ring\*\*\*\*(81\*)
  - 99 Keying hardware, see options below (Body material 2, 3 and 4 only)
- POLARIZATION / WIRING:
- 0R Reversed body polarization
  - 0S Standard body polarization

#### OPTIONS

- KPXX Two fixed jacknuts (KN\*) and interfacial sealing gasket.
- 900 Interfacial sealing gasket
- 0B7 #2-56 Threaded inserts and interfacial sealing gasket standard body polarization
- 0H7 #4-40 threaded inserts (size 100 only), and interfacial sealing gasket, standard body polarization

#### NOTES

- See page MA-6 for keying options
- \* = Use numbers in parenthesis when ordering size 100.
  - \*\*\* = 69 position connectors are available in metal only.
  - \*\*\*\* = Connector body has no mounting holes.
  - = Option not RoHS compliant

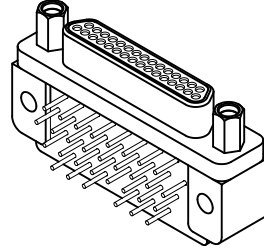


# Right Angle Boardmount (Narrow Footprint)

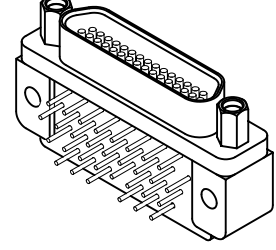
.050"  
9 thru 100 Contacts

**MK, ML**

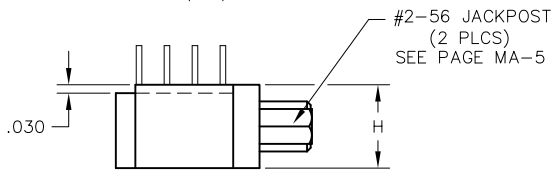
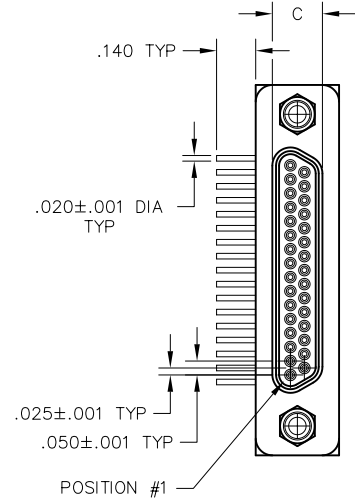
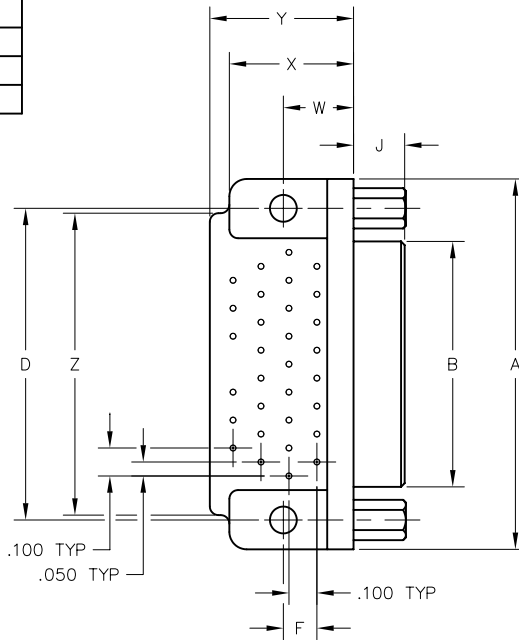
MK-252-031-335-220S (PLUG)



MK-262-031-445-220S (RCPT)



MATING MATRIX	
CONNECTOR	MATES WITH
MK-25...	MK, ML, MM, MN receptacles
ML-25...	MK, ML, MM, MN receptacles
MK-26..	MK, ML, MM, MN plugs
ML-26..	MK, ML, MM, MN plugs



(PLUG SHOWN)

DIMENSIONS																			
SIZE	CONTACT ROWS	A	B		C		D	F	H	J		W	X MAX	Y MAX	Z	HARDWARE	MOUNTING HOLE		
			PLUG MAX	RCPT MAX	PLUG MAX	RCPT MAX				PLUG	RCPT								
9	2	.775	.334	.400	.185	.251	.565	.020	.298	.183	.195	.250	.420	.420	.775	#2-56 UNC THD	.096 DIA OR #2-56 UNC THREADED INSERT		
15		.925	.484	.550			.715											1.075	.925
21		1.075	.634	.700			.865											1.175	1.075
25		1.175	.734	.800			.965											1.325	1.175
31		1.325	.884	.950			1.115											1.475	1.325
37		1.475	1.034	1.100			1.265												1.180
51	3	1.425	.984	1.050	.228	.294	1.215	.150	.341	.300	.430	.650	1.220	.755	1.450	#4-40 UNC THD	.125 DIA #2-56 UNC INSERT #4-40 UNC INSERT		
69		1.725	1.284	1.350			1.515											1.810	
100		2.160	1.384	1.508			.271											.394	1.800

## X-ON Electronics

Largest Supplier of Electrical and Electronic Components

*Click to view similar products for [D-Sub MIL Spec Connectors](#) category:*

*Click to view products by [AirBorn](#) manufacturer:*

Other Similar products are found below :

[M85049/50-5F](#) [MDM-15PH006M7-A174](#) [MDM-15SH001M7-A174](#) [MDM-15SH003M7-A174](#) [MDM-15SH006M7-A174](#) [MDM-21PH046F](#)  
[MDM-21SH006B-A174](#) [MDM-21SH006P-A174](#) [MDM-21SH011P](#) [MDM-21SH011P-A174](#) [MDM-21SH034B-A174](#) [MDM25SL61P](#) [850-](#)  
[056-0812](#) [1218697-4](#) [DA-59-20](#) [1484349-1](#) [17D25HV](#) [1996840-1](#) [243082-15](#) [308-CP3C1001-076](#) [1757682-1](#) [17D-E51218-1](#) [17SDA15S](#)  
[1883533-1](#) [1883889-1](#) [192900-0377](#) [308-CP6P0441-024H](#) [M83513/03-E09C](#) [443961-3](#) [MDM-15PH001F](#) [MDM-15PH001P-A174](#) [MDM-](#)  
[15PH011P](#) [MDM-15PH011P-A174](#) [MDM-15SH006M7](#) [MDM-15SH011F-A174](#) [MDM-15SH011P](#) [MDM-15SH011P-A174](#) [MDM-](#)  
[21PH006M7](#) [MDM-21PH041F](#) [MDM-21PH048F](#) [MDM-21SH003K-F222](#) [MDM-21SH046B-A174](#) [MDM-25PH001M7-A174](#) [MDM-](#)  
[25SH011P](#) [MDM-9SH001F](#) [MDM-9SH006P-A174](#) [5-1218949-1](#) [550-031NF1R6K](#) [3-1236089-2](#) [550E001NF1R3J0L](#)