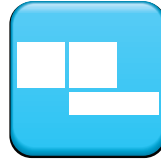
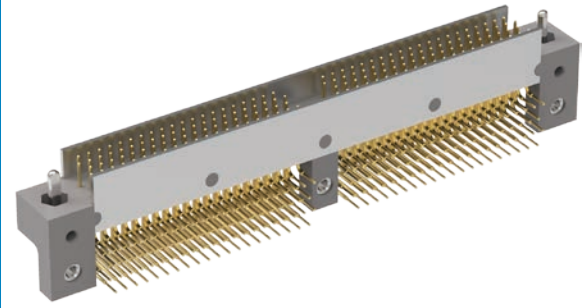


R Series

High-Density
0.075"
(1.905mm)



4
Row

RM – Four-Row, Right-Angle, Board-Mount Plug

Contact Spacing: 0.075" (1.91 mm)

R-Series products are high-density, plastic connectors commonly used in board-to-board applications. Approved to MIL-55302 standard.

Sample Part Number Format: RM452-164-312-9501

RM	4	5	2					
SERIES 0.075" Plastic Rectangular Connector (Plug)	ROWS 4 – 4-Row (86-404 contacts)	STYLE 5 – Plug, right-angle with mounting ears	BODY MATERIAL 2 – Polyphenylene sulfide (PPS)	SIZE 086 – 86 contacts 110 – 110 contacts 164 – 164 contacts 196 – 196 contacts 204 – 204 contacts 220 – 220 contacts 250 – 250 contacts 276 – 276 contacts 300 – 300 contacts 404 – 404 contacts	PLATING 1 – Gold 2 – Pre-tinned, SnPb alloy ‡ 3 – Pre-tinned, SAC305 alloy	POLARIZATION 00 – None XX – See page 141 for codes	TERMINATION 31 – Plated thru-hole, 0.109" x 0.019" Ø 32 – Plated thru-hole, 0.140" x 0.019" Ø 33 – Plated thru-hole, 0.172" x 0.019" Ø 34 – Plated thru-hole, 0.250" x 0.019" Ø	HARDWARE 0256 – None 90 – Guide pins, full round 93 – Fixed jackset 95 – Guide pins, polarized* 9501-9536 – Guide pins, polarized 99 – Guide pins, universal

Notes:

‡ Not RoHS-compliant

* This hardware option is packaged unassembled (uninstalled)

PLEASE CONSULT THE AIRBORN WEBSITE FOR THE LATEST REVISION OF THIS DOCUMENT PRIOR TO BEGINNING ANY DESIGN WORK.

Mates with

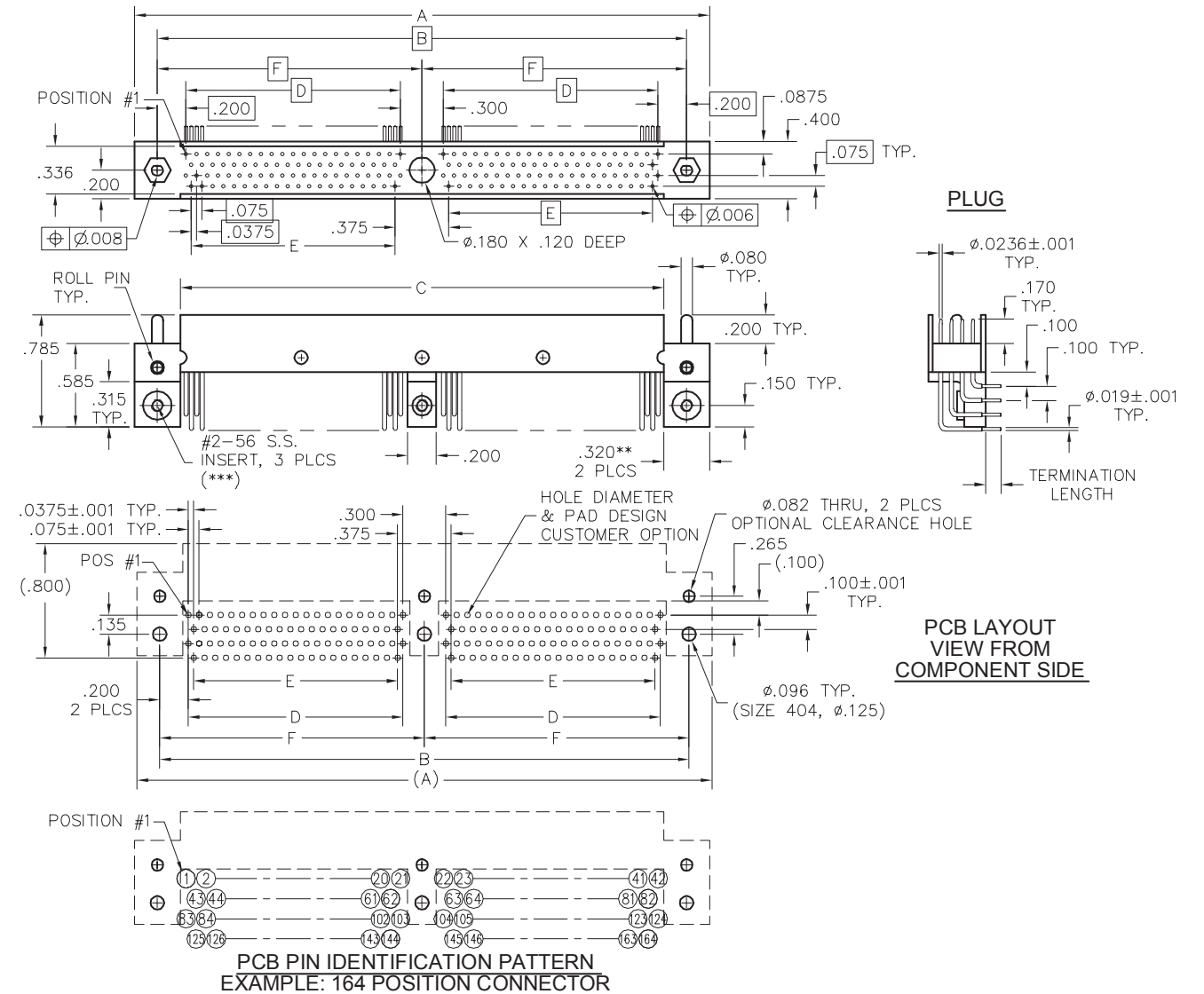
- RM422 — Four-row, straight receptacle
- RM462 — Four-row, right-angle receptacle
- RM422 — Four-row, I/O receptacle

Terminations



RM – Four-Row, Right-Angle, Board-Mount Plug

Plastic ▪ 4-Row ▪ 86-404 Contacts



DIMENSIONS						
SIZE	A	B	C	D	E	F
86*	2.255	1.975	1.655	1.575	1.500	–
110*	2.745	2.425	2.105	2.025	1.950	–
164	4.020	3.700	3.380	1.500	1.425	1.850
196	4.620	4.300	3.980	1.800	1.725	2.150
204	4.770	4.450	4.130	1.875	1.800	2.225
220	5.070	4.750	4.430	2.025	1.950	2.375
250*	5.370	5.050	4.730	4.650	4.575	–
276	6.120	5.800	5.480	2.550	2.475	2.900
300	6.570	6.250	5.930	2.775	2.700	3.125
404****	8.520	8.200	7.880	3.750	3.675	4.100

NOTES:

- * = Single section, no center mounting hole
- ** = .280" for 86 position
- *** = #4-40 for 404 position
- **** = not present on 404 position

PLEASE CONSULT THE AIRBORN WEBSITE FOR THE LATEST REVISION OF THIS DOCUMENT PRIOR TO BEGINNING ANY DESIGN WORK.

X-ON Electronics

Largest Supplier of Electrical and Electronic Components

Click to view similar products for [Rectangular MIL Spec Connectors](#) category:

Click to view products by [AirBorn](#) manufacturer:

Other Similar products are found below :

[891-011-15SA2-BSST](#) [CTS-S16/16](#) [65002-062](#) [CY4602-000](#) [732-8020-01](#) [77058-22-55PN](#) [81542-20](#) [86.030.0053.0](#) [1241346-1](#) [RM252-020-311-2900](#) [DMC-M 08-16 SA](#) [1589051-4](#) [MSO34MPK1E1](#) [BACC65CAMA](#) [BACC65CP1PN](#) [BACI10BC0816PNBA](#) [HSB-D4S03DM222X](#) [2217548-1](#) [891-006-9PS-BST1T](#) [891-009-15SA2-BRT1T](#) [27963-20T12](#) [SIM2N40NC3](#) [SIM2S100A](#) [1604996-2](#) [SMD25PN90L-4055](#) [1900ND08S1B00A](#) [22628-10-6P-791](#) [RE04-212S](#) [M32139/03-G05SN](#) [CTD160E01F-6148](#) [CTJ112E03B](#) [CTJ122E02D-8000](#) [CTJ-3D-12](#) [CTJ920E06N-513](#) [CTJ920E12N-513](#) [CTL-16-090](#) [RM300-000-581-0000](#) [CY4600-000](#) [CY4601-000](#) [38111-14-15SN](#) [38112-14-15PN](#) [MMA23-0111R1](#) [MMD25-0071P1](#) [33516062020](#) [33526M11-08PE](#) [DMC-M99-01AN](#) [Y59113WE20PNV00300](#) [ZPF000000000106310](#) [105979-31](#) [EN4165M01AD0G0](#)