

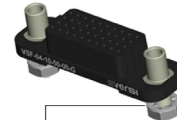
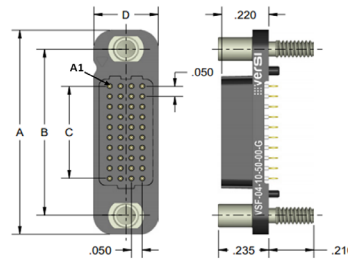


VSF – Vertical (Female)

Pitch: 1.27 mm

VSF signal-integrity connectors are used in vertical, PCB-mount applications where a female interface is required. Termination styles include press-fit, paste-in-hole, plated thru-hole, and surface-mount.

DIMENSIONS

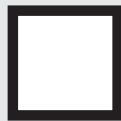


VSF DIMENSIONS					
Columns	A	B	C	Rows	D
10	1.000	0.813	0.450	4	0.300
20	1.500	1.313	0.950	5	0.350
30	2.000	1.813	1.450	6	0.400
40	2.500	2.313	1.950	8	0.500
50	3.000	2.813	2.450	10	0.600

Sample Part Number Format: VSF-04-10-50-02



SERIES
Vertical (Female)
1.27 mm



ROWS
04 – 4 Rows
05 – 5 Rows
06 – 6 Rows
08 – 8 Rows
10 – 10 Rows



COLUMNS
10 – 10 Columns
20 – 20 Columns
30 – 30 Columns
40 – 40 Columns
50 – 50 Columns



CONTACT PLATING
50 – 50 μ" Au



TERMINATION
00 – Press-fit
01 – Paste-in-hole
02 – PTH 0.078"
03 – PTH 0.109"
04 – PTH 0.140"
05 – PTH 0.156"
06 – PTH 0.172"
10† – SMT - SN63PB37
Solder Dipped
11† – SMT - 42Sn/57.6Bi/0.4Ag
lead free, solder dipped



OPTIONS
Blank – No hardware†
G – Guide socket†
G1 – Guide socket‡
J – Turning jackscrew†
J1 – Turning jackscrew‡
L – Locking screw†
L1 – Locking screw‡
N – Fixed jacknut†
N1 – Fixed jacknut‡

NOTES

Connector potting is standard.

¹ Used for PC board thickness up to 0.125"

² Used for PC board thickness 0.125" up to 0.250"

† Surface Mount Termination only available on 4 Row vertical connectors.

‡ No hardware supplied with blank hardware option connectors.

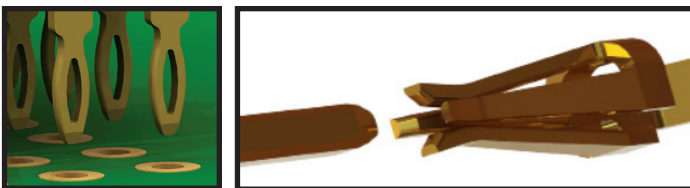
AirBorn can manufacture other configurations to your exact specifications.

RoHS Compliant (except for termination option 10); certificate of conformance available upon request with each shipment

PLEASE CONSULT THE AIRBORN WEBSITE FOR THE LATEST REVISION OF THIS DOCUMENT PRIOR TO BEGINNING ANY DESIGN WORK.

FEATURES

verSI board-mount connectors feature low mating force / high-reliability contact system with four points of contact. The open-pin field design allows for flexibility in termination schemes. Single-ended, differential pair, power, and ground are all available in one connector design. Guide hardware is optional.



MATERIALS and FINISHES

Socket Contacts: BeCu per ASTM B194
 Contact Finish: Localized gold finish per ASTM B488 over nickel per ASTM B689 Type I, 50 μIN min
 Molded Insulators: Glass-filled liquid crystal polymer (LCP) per ASTM D5138
 Potting Compound: Frey Eng. Co. insulating compound CF3003-80
 Hardware (except washers): Stainless steel per ASTM A484/A484M, ASTM A582/A582M, or ASTM A320 passivated per SAE AMS-2700, Method 1, Type 2
 Washers: Stainless steel per NASM35333 (ASTM A240), passivated per NASM35333 (SAE AMS-2700)
 Solder Paste: Sn63Pb37 (PN WS483) and 42Sn/57.6Bi/0.4Ag (PN ALPHA CVP-520)

SI DATA – Simulated (Connectors Only)

1	Diff. Insertion Loss	-0.25 dB @ 5 GHz	-3dB @ 16 GHz
2	Diff. Return Loss	-20 dB @ 5 GHz	-6 dB @ 14 GHz
3	Diff. Impedance	100 ohm ±10% @ 50 ps rise time	
4	Diff. Skew	< 2 psec	

PERFORMANCE

Contact Rating: 2 amperes maximum
 Operating Temperature: -55° C to 125° C
 Min. Contact Wipe: 1.27 mm (0.050")
 Contact Normal Force: 35–40 grams
 Max Recommended Voltage: 200 V, RMS, 60 Hz
 Insulation Resistance: 5,000 megaohms minimum @ 500 VDC
 Durability: 2500 connector mating cycles
 Sinusoidal Vibration: 20 g (EIA-364-28, condition IV)
 Shock: 50 g (EIA-364-27, condition E)

X-ON Electronics

Largest Supplier of Electrical and Electronic Components

Click to view similar products for [I/O Connectors](#) category:

Click to view products by [AirBorn](#) manufacturer:

Other Similar products are found below :

[571763P](#) [72.250.1628.2](#) [72.250.2428.2](#) [74720-0505](#) [76.350.0729.0](#) [76871-1403](#) [FCN-244F080-G/1](#) [FCN-260A9920](#) [MP-5T180MUNNA-005](#)
[PCR-E36PM](#) [PCS-XE26MA+](#) [G38A71314B](#) [1571250010](#) [157-22500-3](#) [MS3471L14-19P L/C](#) [91-569786-35H](#) [172501-4002](#) [172501-6002](#)
[FCN-260C008-A/L0](#) [FCN-260C024-AL0](#) [FCN-261Z008](#) [2000314-1](#) [200331-1](#) [PCR-E36FC+](#) [PCS-E28FS+](#) [PCS-XE26SLFD+](#) [PCS-](#)
[XE26SLFDT+](#) [G730VID08BDC24](#) [U90B2054081210](#) [UE86K842720321](#) [38113800006](#) [DP3AR020WQ1R200](#) [Z4.102.0680.0](#) [500-1040](#)
[500-1052](#) [500-1054](#) [ZP-4008-66L](#) [0709821002](#) [10-565995-597N](#) [DX40-20P\(55\)](#) [5554841-1](#) [U90B3054061110](#) [U65-E04-4020](#)
[ZPF00000000097891](#) [557-262M2-06C](#) [747360449](#) [10099439-003C-TRLF](#) [10137239-0021LF](#) [E9320-001-01](#) [10137239-0011LF](#)