

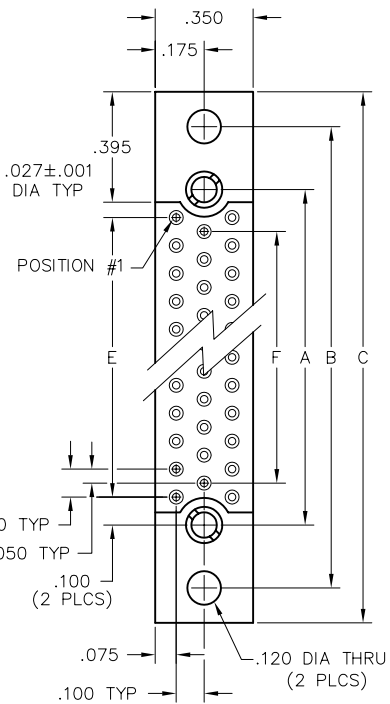
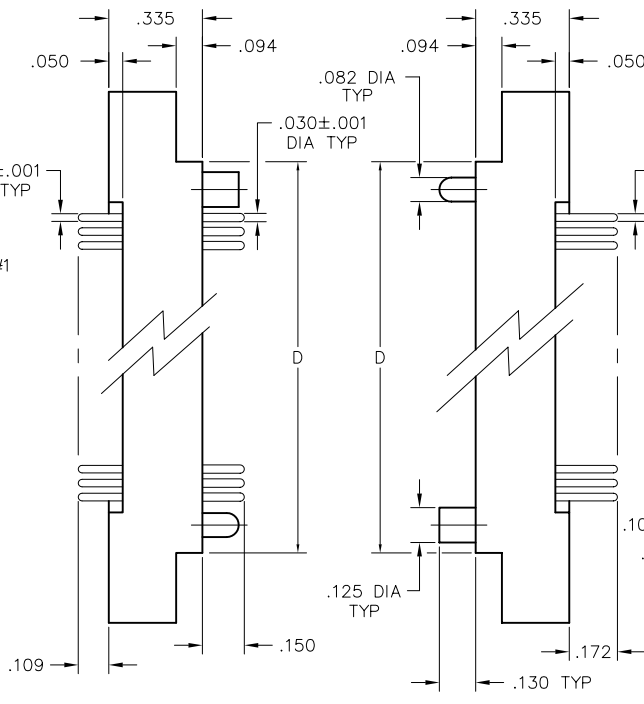
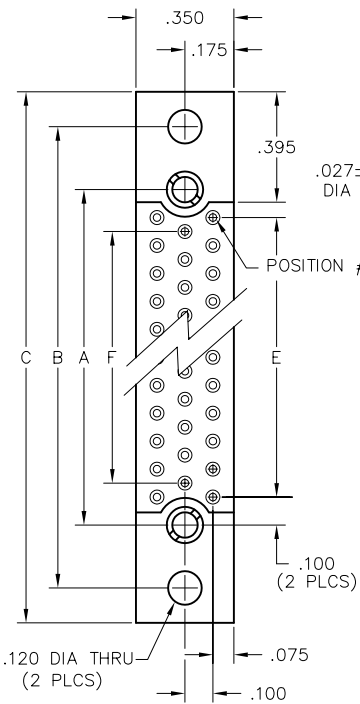
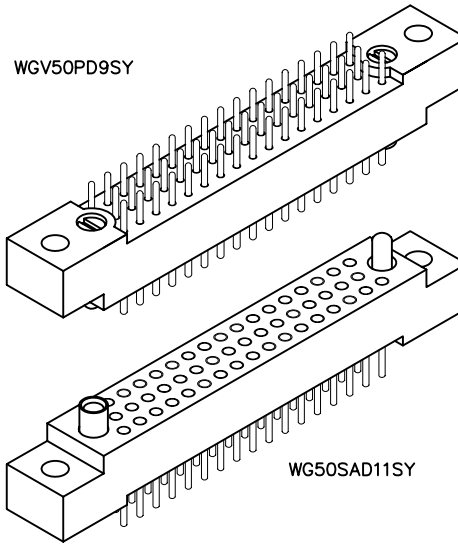


3 • ROW Sandwich Boards

.100"

WGV - WG

50 thru 104 Contacts



PLUG

RECEPTACLE

| DIMENSIONS | | | | | | |
|------------|-------|-------|-------|-------|-------|-------|
| SIZE | A | B | C | D | E | F |
| 50 | 1.800 | 2.250 | 2.500 | 2.000 | 1.600 | 1.500 |
| 62 | 2.200 | 2.650 | 2.900 | 2.400 | 2.000 | 1.900 |
| 80 | 2.800 | 3.250 | 3.500 | 3.000 | 2.600 | 2.500 |
| 92 | 3.200 | 3.650 | 3.900 | 3.400 | 3.000 | 2.900 |
| 104 | 3.600 | 4.050 | 4.300 | 3.800 | 3.400 | 3.300 |

PLUG: WG 50 PR9 SY
 RECEPTACLE: WG 50 SAD11 SY
 XX XX XXXXX XX

PLUG

RECEPTACLE

SERIES

| | | | |
|----|---------------------------------------|----|---|
| WG | Plug, right angle, with mounting ears | WG | Receptacle, straight, with mounting ears |
| | | WG | Receptacle, right angle, with mounting ears |

SIZE

| | | | |
|----|---|----|---|
| XX | Number of contacts (50, 62, 80, 92, or 104) | XX | Number of contacts (50, 62, 80, 92, or 104) |
|----|---|----|---|

CONTACTS

- The contact type determines image of connector. Pin, right angle contacts are always plug image. Straight pin contacts or socket contacts are receptacle image.

TYPE CONTACTS/TERMINATIONS:

| | |
|-------|--|
| PR7 | Pin, right angle, dip solder, .109" x .025" dia |
| PR9 | Pin, right angle, dip solder, .140" x .025" dia |
| PR11 | Pin, right angle, dip solder, .172" x .025" dia |
| PR15 | Pin, right angle, dip solder, .234" x .025" dia |
| PRW34 | Pin, right angle, wire wrap [®] , .531" |
| PRW42 | Pin, right angle, wire wrap [®] , .656" |

TYPE CONTACTS/TERMINATIONS:

| | |
|-------|--|
| SAC | Socket, straight, solder cup (.035" I.D.) |
| SAD7 | Socket, straight, dip solder, .109" x .027" dia |
| SAD9 | Socket, straight, dip solder, .140" x .027" dia |
| SAD11 | Socket, straight, dip solder, .172" x .027" dia |
| SAF3 | Socket, straight, flex circuit, .050" |
| SAF6 | Socket, straight, flex circuit, .093" |
| SAF9 | Socket, straight, flex circuit, .140" |
| SAG7 | Socket, straight, dip solder, .109" x .018" dia |
| SAG9 | Socket, straight, dip solder, .140" x .018" dia |
| SAG11 | Socket, straight, dip solder, .172" x .018" dia |
| SAP | Socket, straight, pin termination .150", connector saver |
| SAW24 | Socket, straight, wire wrap [®] , .375" |
| SAW40 | Socket, straight, wire wrap [®] , .625" |
| SOR7 | Socket, right angle, dip solder, .109" x .025" dia |
| SOR9 | Socket, right angle, dip solder, .140" x .025" dia |
| SOR11 | Socket, right angle, dip solder, .172" x .025" dia |

HARDWARE

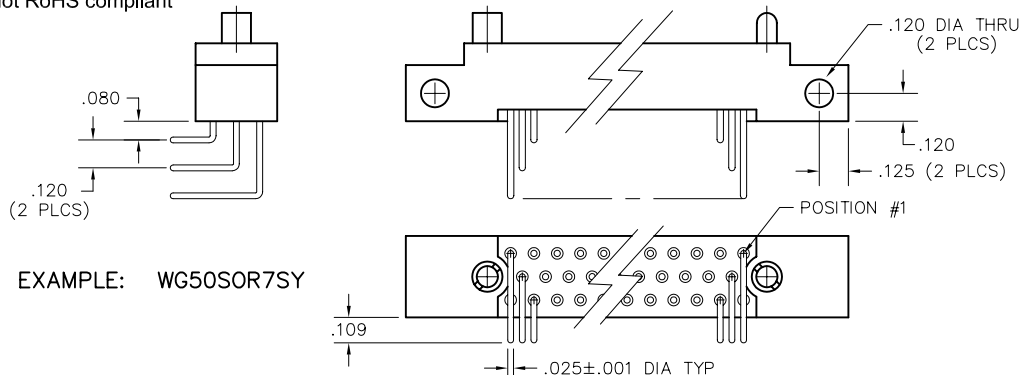
- Plug facial seal gaskets and hoods; order separately or add "Q" in part number. Example: WG50PR9QJ. See "Gaskets" and "Hoods" in Accessories section for instructions.

| | | | |
|------|------------------------------|------|----------------------|
| SY | Guide set | SY | Guide set |
| SY-# | Guide set, polarized | SY-# | Guide set, polarized |
| SYL | Guide set, long | SYL | Guide set, long |
| JT | Turning jackset, .435" | J | Fixed jackset |
| JTA | Turning jackset, .135" | JL | Fixed jackset, long |
| JTB | Hex turning jackset, .135" | | |
| JTC | Hex turning jackset, .435" | | |
| JTL | Turning jackset, long, .635" | | |

OPTIONS

- Option Codes: Add to the end of the part number. Example: WG80PR9SY342. Call factory for additional codes.
- 342 Remove mounting ears. (.250" each end)
- 548 Bond #4-40 small pattern nut into mounting holes (for right angle plug connectors only).
- B82 Termination face sealed against conformal coating
- D01 Pretinned contact terminations (except solder cups, wire wraps[®] and flex contacts) with 63/37 or 60/40 solder.
- P39 Pretinned contact terminations (except solder cups, wire wraps[®] and flex contacts) with SAC305 solder (lead free).
- D54 Combine -B82 & -D01 options
- G69 Solder cups fixed in an outward orientation (otherwise contacts will rotate)

= Option not RoHS compliant



X-ON Electronics

Largest Supplier of Electrical and Electronic Components

Click to view similar products for [Rectangular MIL Spec Connectors](#) category:

Click to view products by [AirBorn](#) manufacturer:

Other Similar products are found below :

[891-011-15SA2-BSST](#) [CTS-S16/16](#) [65002-062](#) [CY4602-000](#) [732-8020-01](#) [77058-22-55PN](#) [81542-20](#) [86.030.0053.0](#) [1241346-1](#) [RM252-020-311-2900](#) [DMC-M 08-16 SA](#) [1589051-4](#) [MSO34MPK1E1](#) [BACC65CAMA](#) [BACC65CP1PN](#) [BACI10BC0816PNBA](#) [HSB-D4S03DM222X](#) [2217548-1](#) [891-006-9PS-BST1T](#) [891-009-15SA2-BRT1T](#) [27963-20T12](#) [SIM2N40NC3](#) [SIM2S100A](#) [1604996-2](#) [SMD25PN90L-4055](#) [1900ND08S1B00A](#) [22628-10-6P-791](#) [RE04-212S](#) [M32139/03-G05SN](#) [CTD160E01F-6148](#) [CTJ112E03B](#) [CTJ122E02D-8000](#) [CTJ-3D-12](#) [CTJ920E06N-513](#) [CTJ920E12N-513](#) [CTL-16-090](#) [RM300-000-581-0000](#) [CY4600-000](#) [CY4601-000](#) [38111-14-15SN](#) [38112-14-15PN](#) [MMA23-0111R1](#) [MMD25-0071P1](#) [33516062020](#) [33526M11-08PE](#) [DMC-M99-01AN](#) [Y59113WE20PNV00300](#) [ZPF000000000106310](#) [105979-31](#) [EN4165M01AD0G0](#)