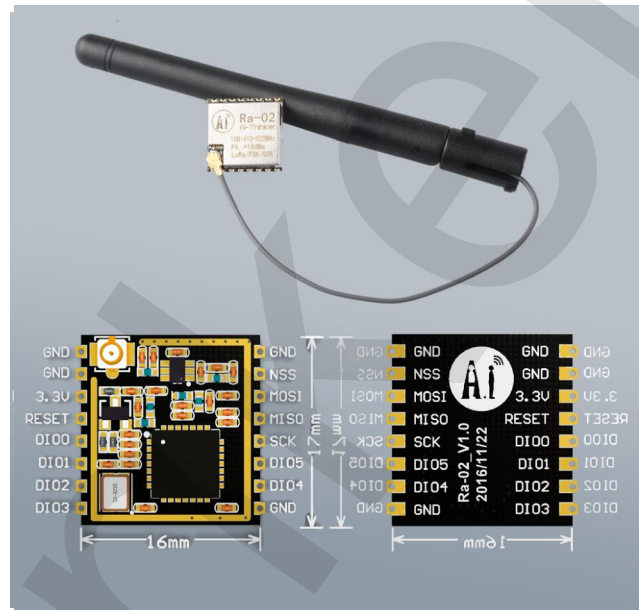
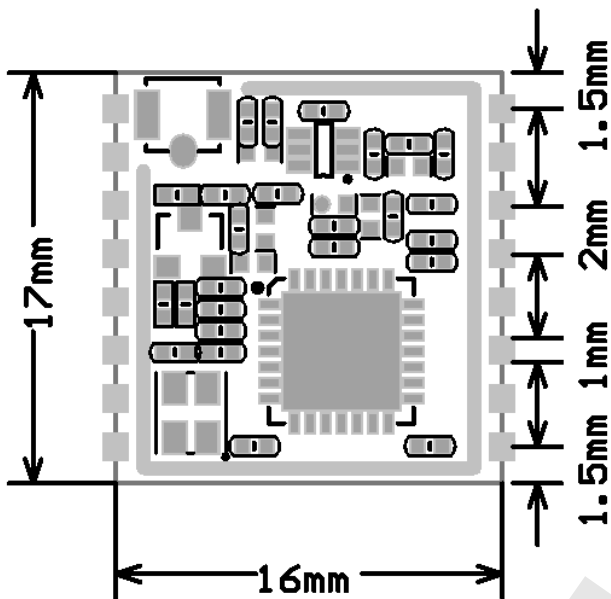


Ra-02 LoRa Module



Features

- LoRa™ spread spectrum modulation technology
- Receive sensitivity as low as -141 dBm
- Excellent resistance to blocking
- Supports preamble detection
- Supports half-duplex SPI communication
- Programmable bit rate up to 300Kbps
- Supports FSK, GFSK, MSK, GMSK, LoRa™ and OOK modulation modes
- Supports automatic RF signal detection, CAD mode and ultra high speed AFC
- Packets with CRC, up to 256 bytes
- Small package with double volume stamps

Overview

Ra-02 can be used for ultra-long distance spread spectrum communication, and compatible FSK remote modulation and demodulation quickly, to solve the traditional wireless design can not take into account the distance, anti-interference and power consumption.

Ra-02 can be widely used in a variety of networking occasions, for automatic meter reading, home building automation, security systems, remote irrigation systems, is the ideal solution for things networking applications.

Ra-02 is available in SMD package and can be used for rapid production by standard SMT equipment. It provides customers with high reliability connection mode.

Product Specifications

Module Model	Ra-02
Package	SMD-16
Size	17*16*(3.2 ± 0.1) mm
Interface	SPI
Programmable bit rate	UP to 300Kbps
Frequency Range	410-525 MHz
Antenna	IPEX
Max Transmit Power	18±1 dBm
Power (Typical Values)	433MHz: TX:93mA RX:12.15mA Standby:1.6mA 470MHZ: TX:97mA RX:12.15mA Standby:1.5mA
Power Supply	2.5~3.7V, Typical 3.3V
Operating Temperature	-30 °C ~ 85 °C
Storage Environment	-40 °C ~ 90 °C , < 90%RH
Weight	0.45g

Receive Sensitivity

Frequency	Spread Factor	SNR	Sensitivity
433MHz	7	-7	-125
	10	-15	-134
	12	-20	-141
470MHz	7	-7	-126
	10	-15	-135
	12	-20	-141

Note: The above data are measured by the Semtech Shenzhen laboratory. The test conditions: power output 20dBm, bandwidth 125KHz.

Contact US

Shenzhen Ai-Thinker Technology Co., Ltd

Address: 6/F, Block C2, Huafeng Industrial Park, Hangcheng Road, Bao'an Road, Baoan District, Shenzhen ,China

Website: www.ai-thinker.com

Tel: 0755-29162996

E-mail: support@aithinker.com

X-ON Electronics

Largest Supplier of Electrical and Electronic Components

Click to view similar products for [WiFi Modules - 802.11 category](#):

Click to view products by [Ai-Thinker manufacturer](#):

Other Similar products are found below :

[KBPC10/15/2506WP](#) [SX-PCEAN2C-SP](#) [849WM520100E](#) [7265.NGWG.SW](#) [HDG204-DN-3](#) [FXX-3061-MIX](#) [EMIO-1533-00A2](#) [PPC-WL-KIT02-R11](#) [450-0159R](#) [AX210.NGWG.NV](#) [EWM-W190H02E](#) [WB3S\(oeak\)](#) [WB3S\(82yd\)](#) [WB3S\(0nw9\)](#) [1005869](#) [1012](#) [QCA4004X-BL3B](#) [32-2006-BU](#) [WLNN-AN-DP551](#) [WT8266-S2](#) [DWM1000](#) [RN171XVS-I/RM](#) [ATWILC1000-MR110PB](#) [ATWILC1000-MR110UB](#) [ATWILC3000-MR110CA](#) [ATWINC1500-MR210UB](#) [BP3591](#) [BP3595](#) [BP3599](#) [QCA4002X-AL3B](#) [QCA4002X-AL3A](#) [QCA4004X-AL3B](#) [WT51822-S2](#) [SD-528](#) [ENW-49A01C3EF](#) [LBEE5ZZ1CK-TEMP-DS-SD](#) [RS9113-NBZ-D5W](#) [ATWILC1000-MR110PB-T](#) [ATWINC1500-MR210PB1952-T](#) [SPWF04SC](#) [SX-SDMAN2-2830S](#) [ENW-49C01AYKF](#) [8265.NGWMG](#) [2702534](#) [APXN-Q5420](#) [ESP-WROOM-02D \(2MB\)](#) [ESP-WROOM-02U \(2MB\)](#) [ESP32-WROOM-32D \(4MB\)](#) [ESP32-WROOM-32U \(4MB\)](#) [RN1810E-I/RM100](#)