

SOT-23 Plastic-Encapsulate MOSFETS

SI2301

P-Channel 20V(D-S) MOSFET

Features

- $V_{DS} = -20V$, $I_D = -2.5A$
- $R_{DS(ON)} < 150m\Omega$ @ $V_{GS} = -2.5V$
- $R_{DS(ON)} < 110m\Omega$ @ $V_{GS} = -4.5V$
- Super high density cell design for extremely low $R_{DS(ON)}$
- Exceptional on-resistance and maximum DC current capability
- Capable doing Cu wire bonding

Applications

- Power Management in Note book
- Portable Equipment
- Battery Powered System
- Load Switch
- DSC

Description

This is the P-Channel logic enhancement mode power field effect transistors are produced using high cell density, DMOS trench technology. This high density process is especially tailored to minimize on-state resistance.

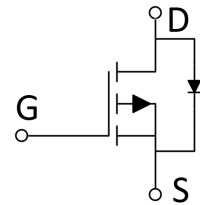
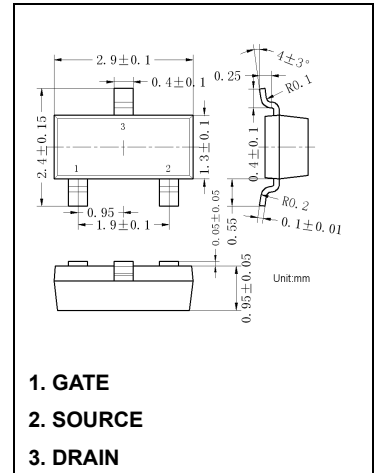
Marking: A1SHB.

Maximum Ratings ($T_a=25^\circ C$ unless otherwise noted)

Symbol	Parameter	Value	Unit
V_{DS}	Drain-source voltage	-20	V
V_{GS}	Gate-source voltage	± 8	V
I_D	Continuous drain current	-2.5	A
I_{DM}	Pulsed Drain Current ¹⁾	-13	
P_D	Power dissipation	0.4	W
T_J	Operating Junction	150	$^\circ C$
T_{stg}	Storage temperature	-55 to 150	$^\circ C$

Thermal Characteristic

Symbol	Parameter	Value	Unit
$R_{\theta JA}$	Thermal Resistance from Junction to Ambient ($t \leq 5s$) ²⁾	312.5	$^\circ C / W$
$R_{\theta JC}$	Thermal Resistance from Junction to Case	30	$^\circ C / W$



Electrical Characteristics (T_a=25 °C unless otherwise noted)

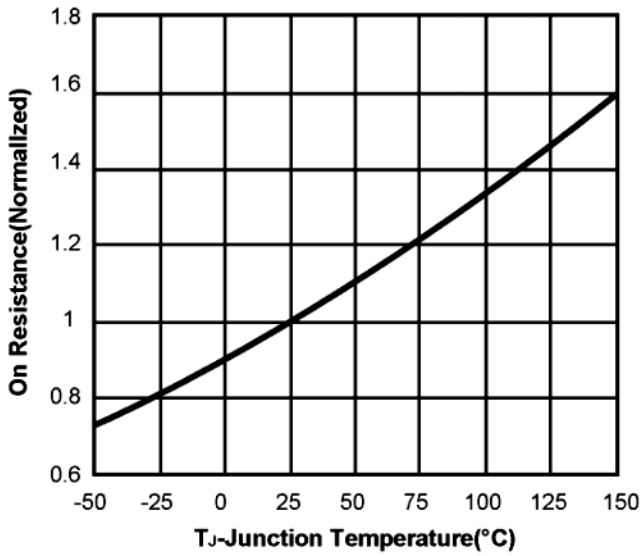
Symbol	Parameter	Test conditions	Min	Typ	Max	Unit
Off Characteristics						
V _{(BR)DSS}	Drain- source breakdown voltage	V _{GS} = 0 V, I _D = -250uA	-20			V
I _{DSS}	Zero gate voltage drain current	V _{DS} = -20 V, V _{GS} = 0 V			-1	μA
I _{GSS}	Gate-body leakage current	V _{GS} = ±8V, V _{DS} = 0 V			±100	nA
On Characteristics						
V _{GS(th)}	Gate threshold voltage	V _{GS} =V _{DS} , I _D = -250uA	-0.4		-1	V
R _{DS(on)}	Drain-Source on-state resistance	V _{GS} = -4.5 V, I _D = -2.5A		90	110	mΩ
		V _{GS} = -2.5 V, I _D = -2A		110	150	
Dynamic Characteristics						
C _{iss}	Input capacitance	V _{GS} = 0 V, V _{DS} = -15V, f = 1 MHz		381		pF
C _{oss}	Output capacitance			49		
C _{rss}	Reverse transfer capacitance			25		
Switching Characteristics						
t _{d(on)}	Turn-on delay time	V _{DS} = -6V, R _L = 6Ω R _{GEN} = 6Ω, V _{GS} = -4.5V		61.6		ns
t _r	Rise time			23.1		
t _{d(off)}	Turn-off delay time			47.6		
t _f	Fall time			7.9		
Q _g	Total gate charge	V _{DS} = -6V, V _{GS} = -4.5V, I _D = -2.5A		5.6		nC
Q _{gs}	Gate-source charge			2.4		
Q _{gd}	Gate-drain charge			1.3		
Drain-source body diode characteristics						
V _{SD}	Diode forward voltage ¹⁾	V _{GS} = 0 V, I _S = -1A		-0.7	-1.4	V

Notes:

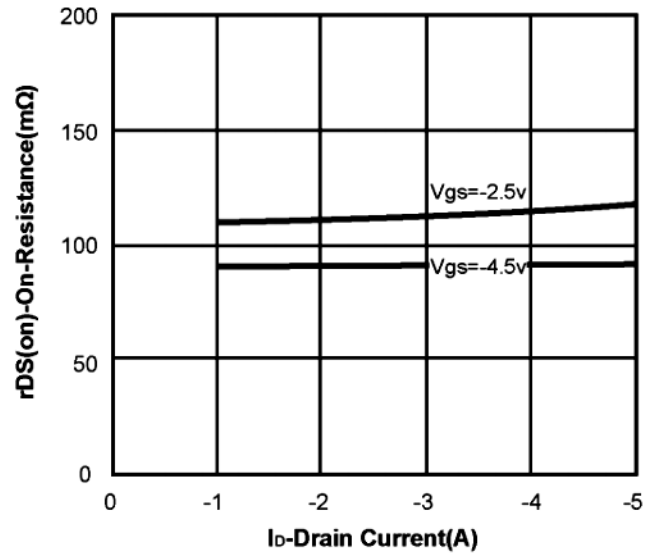
1. Repetitive Rating: Pulse width limited by maximum junction temperature.
2. The value of R_{θJA} is measured with the device mounted on 1 in2 FR-4 board in a still air environment with T_a=25°C.

Typical Electrical Characteristics

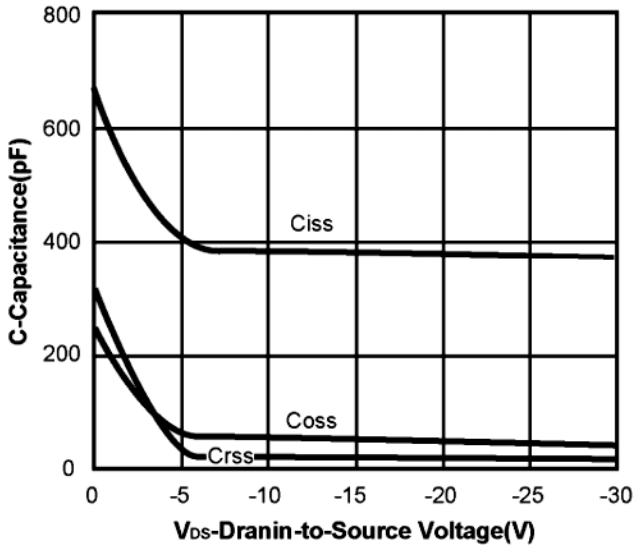
On Resistance vs. Junction Temperature



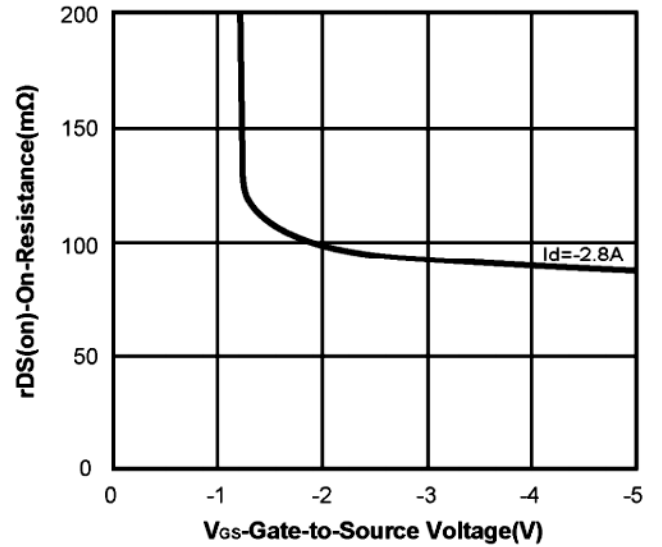
On Resistance vs. Drain Current



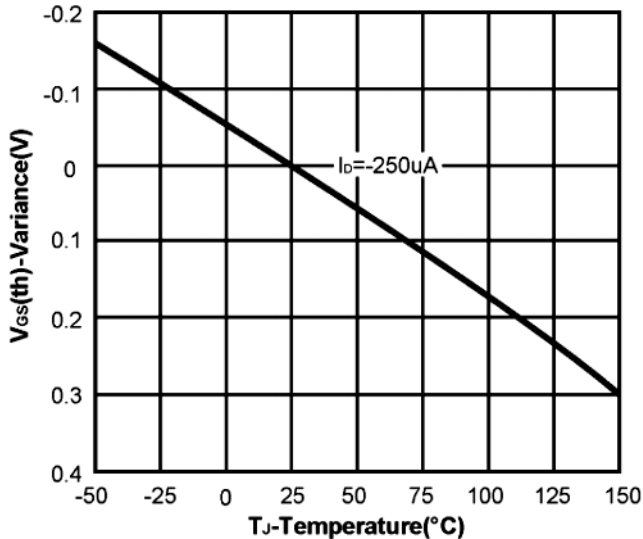
Capacitance



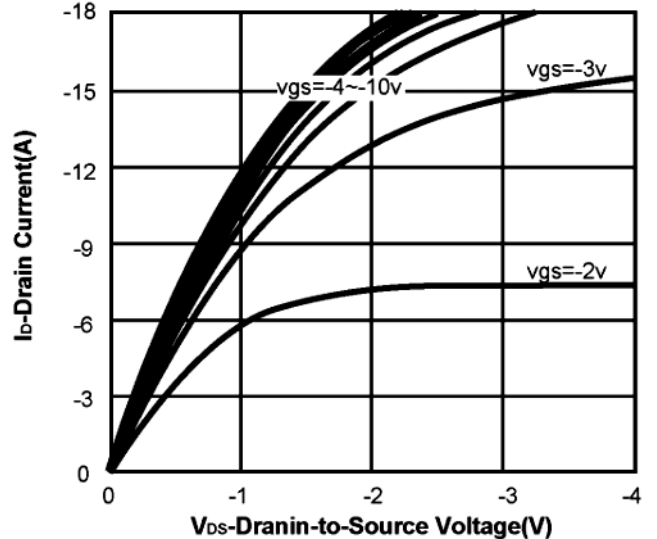
On Resistance vs. Gate-to-Source Voltage



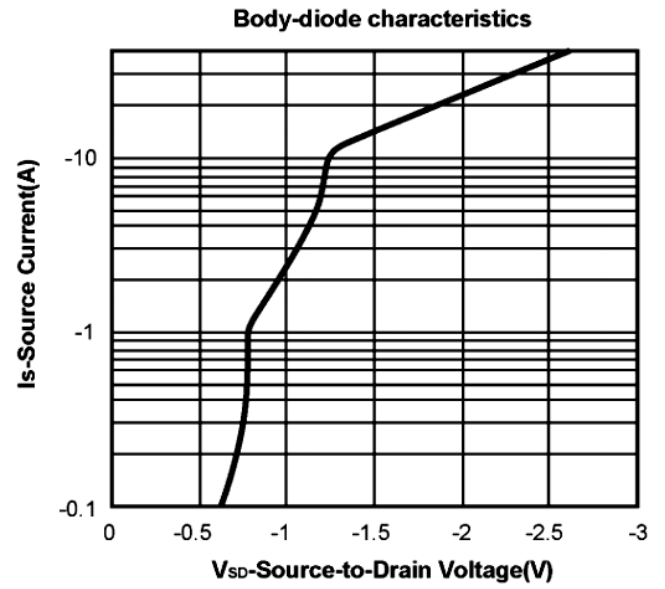
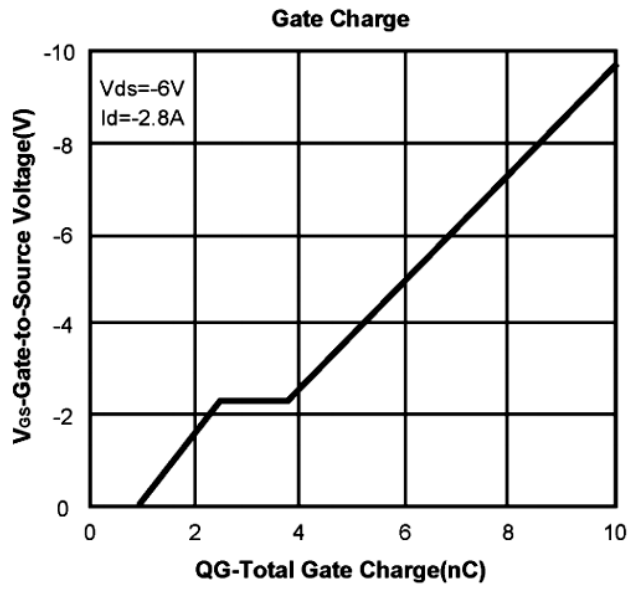
Threshold Voltage



On-Region Characteristics



Typical Electrical Characteristics(Cont.)



X-ON Electronics

Largest Supplier of Electrical and Electronic Components

Click to view similar products for [MOSFET](#) category:

Click to view products by [ALJ](#) manufacturer:

Other Similar products are found below :

[IRFD120](#) [IRFY240C](#) [JANTX2N5237](#) [2SK2267\(Q\)](#) [BUK455-60A/B](#) [MIC4420CM-TR](#) [VN1206L](#) [NDP4060](#) [SI4482DY](#)
[IPS70R2K0CEAKMA1](#) [SQD23N06-31L-GE3](#) [TK16J60W,S1VQ\(O](#) [2SK2614\(TE16L1,Q\)](#) [DMN1017UCP3-7](#) [EFC2J004NUZTDG](#)
[DMN1053UCP4-7](#) [SQJ469EP-T1-GE3](#) [NTE2384](#) [DMC2700UDMQ-7](#) [DMN2080UCB4-7](#) [DMN61D9UWQ-13](#) [US6M2GTR](#)
[DMN31D5UDJ-7](#) [DMP22D4UFO-7B](#) [DMN1006UCA6-7](#) [DMN16M9UCA6-7](#) [STF5N65M6](#) [IRF40H233XTMA1](#) [STU5N65M6](#)
[DMN6022SSD-13](#) [DMN13M9UCA6-7](#) [DMTH10H4M6SPS-13](#) [DMN2990UFB-7B](#) [IPB80P04P405ATMA2](#) [2N7002W-G](#) [MCAC30N06Y-](#)
[TP](#) [MCQ7328-TP](#) [NTMC083NP10M5L](#) [NVMFS2D3P04M8LT1G](#) [BXP7N65D](#) [BXP4N65F](#) [AOL1454G](#) [WMJ80N60C4](#) [BXP2N20L](#)
[BXP2N65D](#) [BXT1150N10J](#) [BXT1700P06M](#) [TSM60NB380CP](#) [ROG](#) [RQ7L055BGTCR](#) [DMNH15H110SK3-13](#)