

SPECIFICATIONS

RK14K1220D22

ELECTRICAL

1. Total resistance : 100 k Ω \pm 20%
2. Rated power : 0.05 W
3. Rated voltage :

The rated voltage shall be the voltage of D.C. or A.C. (commercial frequency, effective value) corresponding to the rated power (dissipation), and be obtained from the following formula. When the obtained rated voltage exceeds the maximum working voltage given in the following, however, the maximum working voltage of the following shall be the rated voltage.

$$E = \sqrt{P \cdot R} \text{ (V)}$$

Where E : Rated voltage (V)
P : Rated power (dissipation) (W)
R : Nominal total resistance (Ω)

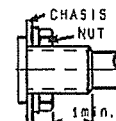
Maximum working voltage : 50 V A.C.

This potentiometer is designed for A.C. voltage only.

4. Resistance taper : "SPECIAL W" (K142-W04)
5. Tap resistance between terminals : 1 & 4 : 50k Ω \pm 30 %
6. Tap residual resistance between terminals : 2 & 4 : 1 k Ω max.
7. Residual resistance between terminals : 1 & 2 : 100 Ω max.
2 & 3 : 100 Ω max.
8. Tap position : 150' \pm 5'
9. Sliding noise : Less than 250 mV. (Measured by JIS C 6443)
(Except click point)
10. Insulation resistance : More than 100 M Ω at 250V D.C.
11. Withstand voltage: 300V A.C. for one minute.
12. Gang error : Not specified.

MECHANICAL

1. Total rotational angle : 300' \pm 5'
2. Rotational torque : 3~20 mN·m (Rotational speed 60°/sec.)
3. Resistance to soldering heat :
After soldering (Less than 350°C and within 3 seconds) there shall be no evidence of poor contact between resistance element and terminals, or any physical damages as a result of the test.
4. Stopper strength : No damage with an application of 0.6N·m.
5. Robustness after soldering resistor shaft against end thrust and pull force :
With the potentiometer mounted, no damage with 80N of push and pull force.
6. Robustness at shaft against side thrust :
With the potentiometer mounted, no damage with 30N of thrust force to the shaft top.
7. Shaft play :
After installing the potentiometer, the resistor shall be mounted by soldering the mounting legs on the panel. When a side thrust of 50mN·m shall be applied at the end of the shaft, the total shaft play shall not exceed 0.7XL/30 mm p-p.
(L: Shaft length)
8. Bushing nut tightening strength : Tightening torque to be no greater than 1N·m.
Pay attention otherwise the strength may not be assured.
9. Click position : 150' \pm 5'
10. Click torque : Rotational torque + (3~30mN·m)



ENDURANCE

1. Rotational life : 15,000 cycles min.

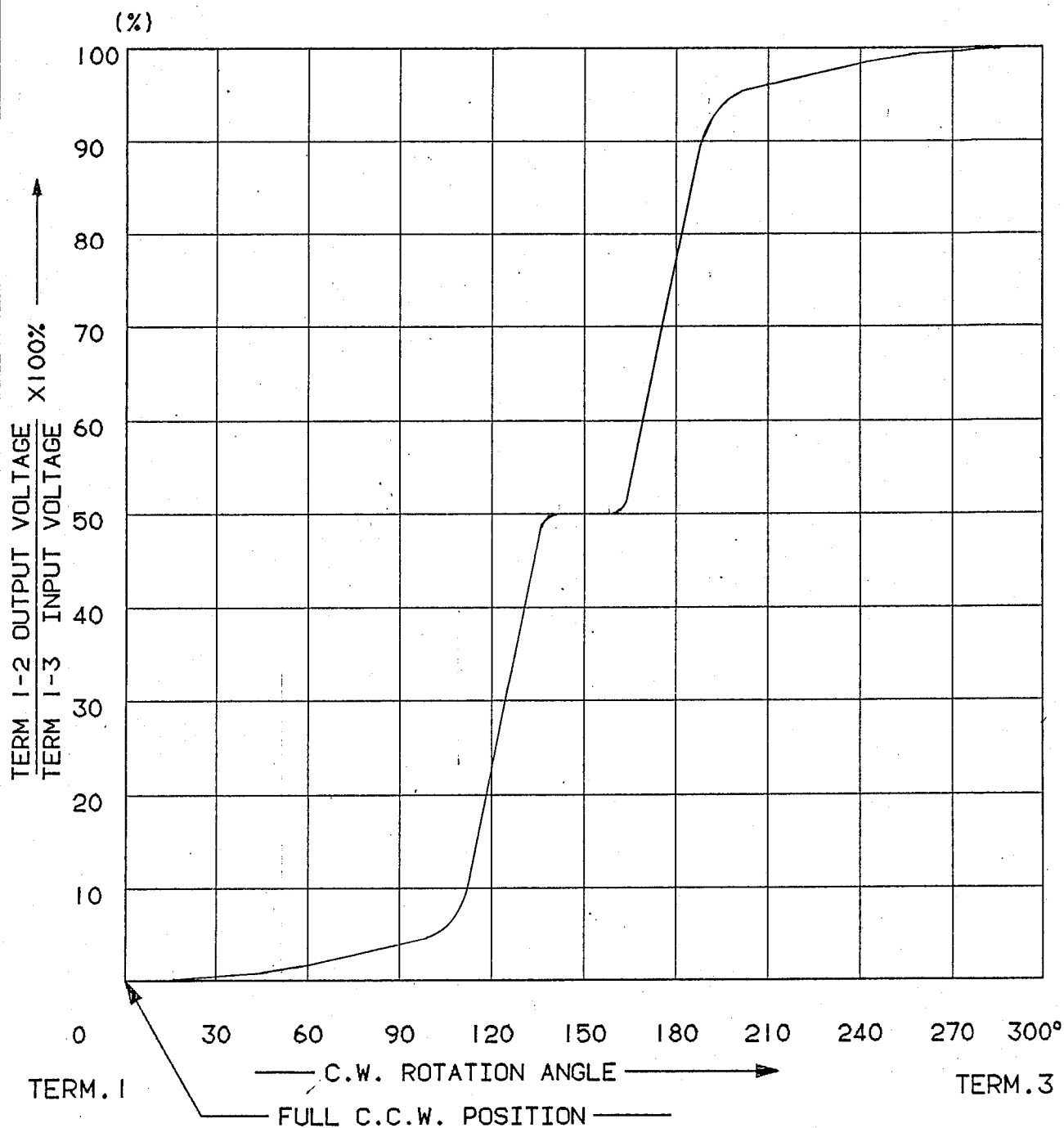
NOTE

1. The items except above mentioned items shall meet or exceed JIS C 6443.
2. Operating temperature : -10°C~+70°C.
3. Storage temperature : -30°C~+70°C.

					ALPS ELECTRIC CO., LTD.			
					APPD.	CHKD.	DSGD.	TITLE
					DESIGN '08. 2. 18 IKENOUE		DESIGN '08. 2. 18 YOHYA	DOCUMENT NO. 5K142CD01BC
SYMB	DATE	APPD	CHKD	DSGD				



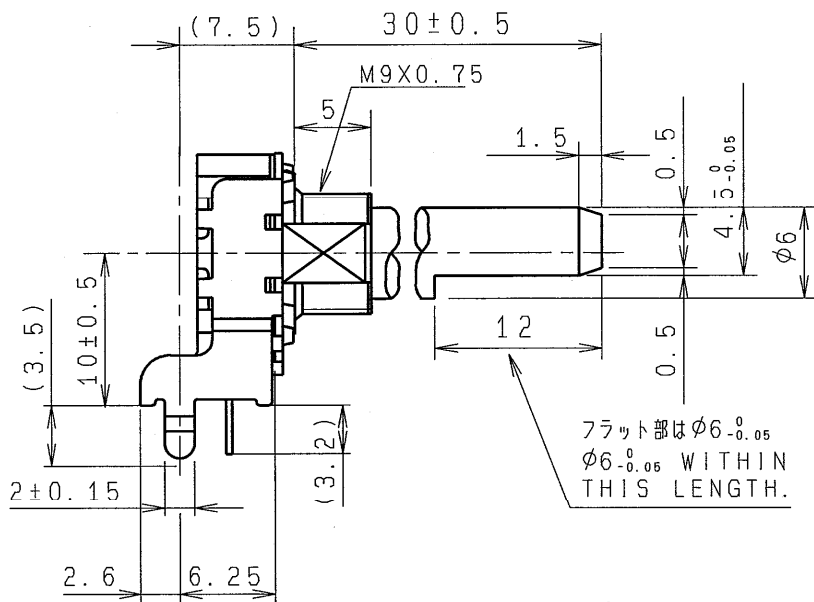
ALPS ELECTRIC CO., LTD
1-7 YUKIGAYA OTSUKA-CHO OTA-KU TOKYO JAPAN



TAP POSITION; 150° (TAP RESISTANCE BETWEEN TERMS:
TAP RESISTANCE; 50% 1-4; 50k Ω \pm 30%)
AT 90° \pm 5° C.W. SHAFT ROTATION FROM FULL C.C.W. POSITION VOLTAGE
PERCENT SHALL FALL WITHIN THE LIMITS OF 1 ~ 7 PERCENT.
AT 210° \pm 5°-----93~99%.

					DSGD ELty		
					T. SHIOYA 87-06-29		
					CHKD.		
					k. Magami 87-06-29		
					APPD.		
					M. Inoue 87-6-29		
SYMB	DATE	APPD	CHKD	DSGD	UNIT	TITLE	DOCUMENT NO.
					m m	RESISTANCE TAPER	K142 - W04

OR

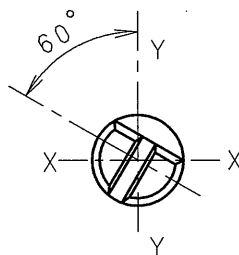
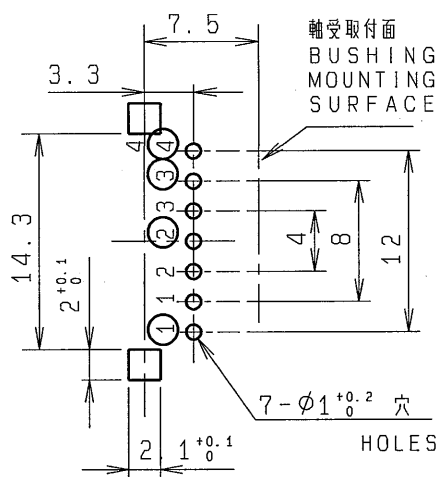


取付寸法図 (公差±0.1)

*挿入側からみた図

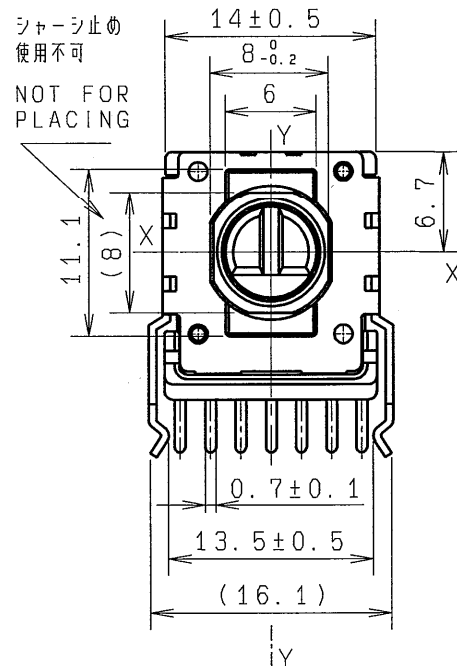
P.W.B. MOUNTING DETAIL
(TOLERANCE±0.1)

VIEWED FROM MOUNTING SIDE



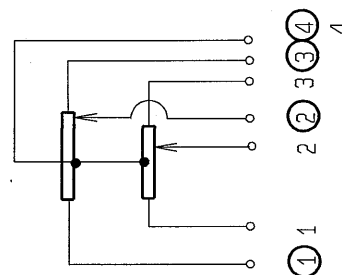
軸は反時計方向に
回しまった状態を示す
SHAFT SHOWN
IN FULL C.C.W.
POSITION.

外側 OUTER R1 ①②③④
内側 INNER R2 1 2 3 4
P.W.B. 板厚 T=1.6



軸はセンタークリック位置を示す

SHAFT SHOWN IN
CENTER CLICK POSITION.



回路図
CIRCUIT

指定なき部分の許容差 TOLERANCES UNLESS OTHERWISE SPEC	
$L \leq 10$	± 0.3
$10 < L < 100$	± 0.5
$100 \leq L$	± 0.8
角度 ANGULAR DIMENSION	$\pm 5^\circ$

PART NO.		NAME		MATERIAL NAME / CODE		FINISH		1T独立、4T共通			
ALPS ELECTRIC CO., LTD.											
DSGD.				Y. OHYA 2008-03-13			SCALE		NO.		
CHKD.									SHAFT COLOR: BLACK		
Origin. 1990-10-13				S.A M.F R.O					TITLE FIGURE		
SYMB				DATE			UNIT			DOCUMENT NO.	
APPD.				G. Shimizu 2008-03-14			mm			K142C0G34	

OR

X-ON Electronics

Largest Supplier of Electrical and Electronic Components

Click to view similar products for [Potentiometers](#) category:

Click to view products by [ALPS](#) manufacturer:

Other Similar products are found below :

[58C2-2](#) [590SX1N32F103SS](#) [591SXJ48S252SC](#) [591SXP56S252SC](#) [591SXP56S503SC](#) [D31409](#) [70B1G048K502X-A](#) [70B1M032S502W](#)
[70B1N056S202W](#) [70B8N056F502W](#) [70J8N048S104U](#) [70L1N040P103W](#) [70L1N048P103X](#) [70L1N048S103W](#) [GA2L040S102UC](#)
[GA2L040S103UC](#) [GS1G044P103UA](#) [GS1N048P103UA](#) [GS1T032S103UA](#) [A43-1500](#) [A43-20K](#) [A47-200K](#) [A4720K](#) [132-2-0-202](#) [132-0-0-202](#) [RK14K1220-F25-C0-A103](#) [RK14K1220F25C0C104](#) [RK14K1220-F25-C1-B103](#) [14910FAGJSX10102KA](#) [14910FBGLFY00103KA](#)
[14910AABHSX10103KA](#) [14910FAGJSX10104KA](#) [152-01031](#) [C0342008 5K](#) [J97589](#) [23M728](#) [248BBHS0XB25104MA](#)
[248BBHS0XB25503MA](#) [249FGJS0XB25503KA](#) [RV170F-10-15R1-B500K-0021](#) [917523A](#) [A43-40](#) [A43-750](#) [A43S-5](#) [A47-15K](#) [A47-1K](#)
[A4750K](#) [SPPG048S103U](#) [SPPG056P103U](#) [SWE-10](#)