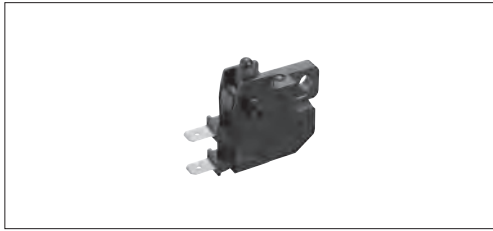


# SDDH

## Water-proof Switch Compatible with 10mA to 4.5A

IP68 water resistant, enabling submerged operation



### Ratings and Safety Standards

Items	Specifications
Rating (max.)	4.5A 12V DC (lamp load: 27W×2)
Rating (min.)	10mA 12V DC (Resistive load)
Contact resistance	500mΩ max.
Operating force	4.6N max.
Operating life	100,000 cycles

### Product Line

Type	Circuit arrangement	Travel (mm)	Mounting method	Terminal configuration	Minimum order unit (pcs.)		Product No.
					Japan	Export	
Push	SPST (Normal Close)	3.7	Snap-in	Tab Terminal (#187)	180	360	<b>SDDHA10100</b>

### Packing Specifications

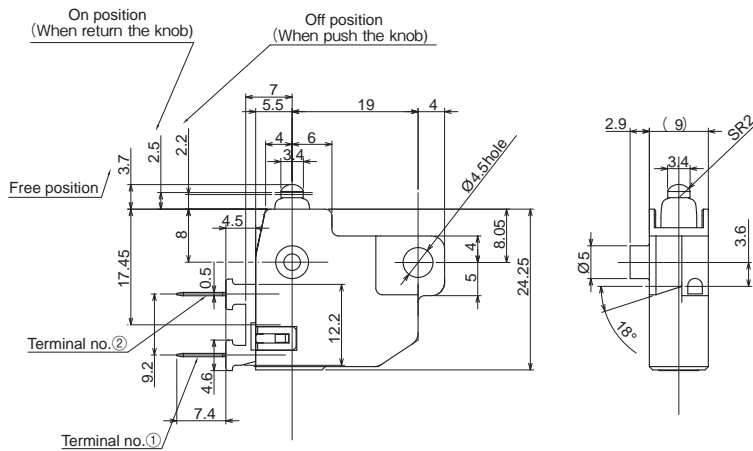
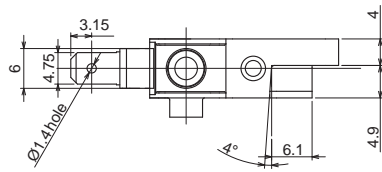
Tray

Number of packages (pcs.)		Export package measurements (mm)
1 case /Japan	1 case /export packing	
180	360	400×270×185

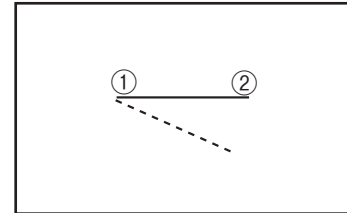
### Dimensions

Unit:mm

Style



### Circuit Diagram



Detector

Slide

Push

Rotary

**Power**

Dual-in-line  
Package Type









Push Type

Rocker Type

Rotary Type

# Power Switches

## List of Varieties

Type		Push		Rocker	Rotary
Series		SDKR	SDDH	SDDJE ※ 1 ※ 2	SDDE
Photo					
Rating		0.5A 250V AC 1A 125V AC 10mA 5V DC	Rating (max.): 4.5A 12V DC (Lamp load: 27W×2) Rating (min.): 10mA 12V DC (Resistive load)	10AGP 250V AC 6A / 96A 250V~	AC Switch: 1A / 16A 250V ~ DC Switch: 20mA 12V DC Encoders: 0.1A 12V DC
Operating life		100,000cycles	100,000 cycles	10,000cycles	AC Switch: 10,000 cycles DC Switch: 10,000 cycles
		0.5A 250V AC		10A 250V AC	
Travel (mm)		1.5	3.7	3.4	Push Switches: 1.85mm Encoders: 360° (360° Rotation)
Features		Water-proof type With signal circuit	Water-proof (IP68 rating)	—	AC Switch, DC Switch, With Encoder
Operating temperature range		-10°C to +85°C	-15°C to +80°C	-10°C to +55°C	0°C to +85°C
Automotive use		—	●	—	—
Life cycle (availability)					
Electrical performance	Contact resistance	100mΩ max. ( AC switch) 500mΩ max. (DC switch)	500mΩ max.	100mΩ max.	AC Switch: 100mΩ max. DC Switch: 500mΩ max. Encoder: 1Ω max.
	Insulation resistance	500MΩ min. 500V DC (AC switch) 100MΩ min. 100V DC (DC switch)	10MΩ min. 500V DC	500MΩ min. 500V DC	AC Switch: 100MΩ min. 500V DC DC Switch: 100MΩ min. 100V DC Encoder: 100MΩ min. 100V DC
	Voltage proof	1000V AC for 1minute (AC switch) 100V AC for 1minute (DC switch)	500V AC for 1minute	2,000V AC for 1minute	AC Switch: 2,000V AC for 1 minute DC Switch: 100V AC for 1 minute Encoder: 100V AC for 1 minute
Mechanical performance	Terminal strength	5N for 1minute	Slider pull-out strength: 100N min.	50N for 1minute (Lead terminal) 5N for 1minute (Right-angle terminal)	AC Switch: 5N for 1 minute DC Switch: 5N for 30s Encoder: 5N for 1 minute
	Actuator strength	Operating direction	100N	—	100N
		Perpendicular direction	20N	—	25N
Environmental performance	Cold	-20°C 240h	-15°C 96h	-20°C 96h	-40°C 240h
	Dry heat	85°C 240h	80°C 96h	85°C 96h	85°C 240h
	Damp heat	60°C, 90 to 95%RH 1000h	40°C, 90 to 95%RH 96h		40°C, 90 to 95%RH 240h
Page		148	149	150	154

Power Switches Soldering Conditions	155
Power Switches Cautions	155
Power Switches Safety Standard	155

### Notes

- ※ 1. Dip soldering can be used on SDDJE for PC board terminal and SDDJF right angle terminal types only.
- ※ 2. The operating temperature range can be raised upon request. Please contact us for details.
- Indicates applicability to all products in the series.

## X-ON Electronics

Largest Supplier of Electrical and Electronic Components

*Click to view similar products for [Basic / Snap Action Switches](#) category:*

*Click to view products by [ALPS](#) manufacturer:*

Other Similar products are found below :

[5SM901-S12](#) [5SM9-S12N195](#) [01.098.1358.1](#) [602EN532](#) [602EN535-RB](#) [602HE5-RB1](#) [604HE162](#) [604HE223-6B](#) [624HE17-RB](#) [6HM82](#)  
[6HM89](#) [6SE1](#) [6SX1-H58](#) [70500216](#) [70599106](#) [MBD5B1](#) [MBH2731](#) [73-316-0012](#) [EXD-AR20](#) [79211923](#) [79218589](#) [7AS12](#)  
[MIL30126AB6BBMD4A12XAU](#) [ML-1155](#) [ML-1376](#) [831010C3.0](#) [831090C2.EL](#) [83131904](#) [84212012](#) [8AS239](#) [8HM73-3](#) [8SX26-H33](#)  
[914CE1-6G](#) [PL-100](#) [11SM1077-H4](#) [11SM1077-H58](#) [11SM1-TN107](#) [11SM405](#) [11SM8423-H2](#) [11SX37-T](#) [11SX48-H58](#) [11SM2442-T](#)  
[11SM76-T](#) [11SM77-H58](#) [11SM77-T](#) [11SM863-T](#) [11SM866](#) [A7CN-1M-1-LEFT](#) [A831700C7.0](#) [121EN187-R](#)