

Power Switch > SDDH Series > SDDHA10100

Water-proof Switch Compatible with 10mA to 4.5A SDDH Series

[| Dimensions](#) | [| Circuit Diagram](#) | [| Packing Specifications](#) |



Part number

SDDHA10100

NET SHOP

3D CAD

RoHS

Print

Inquiry

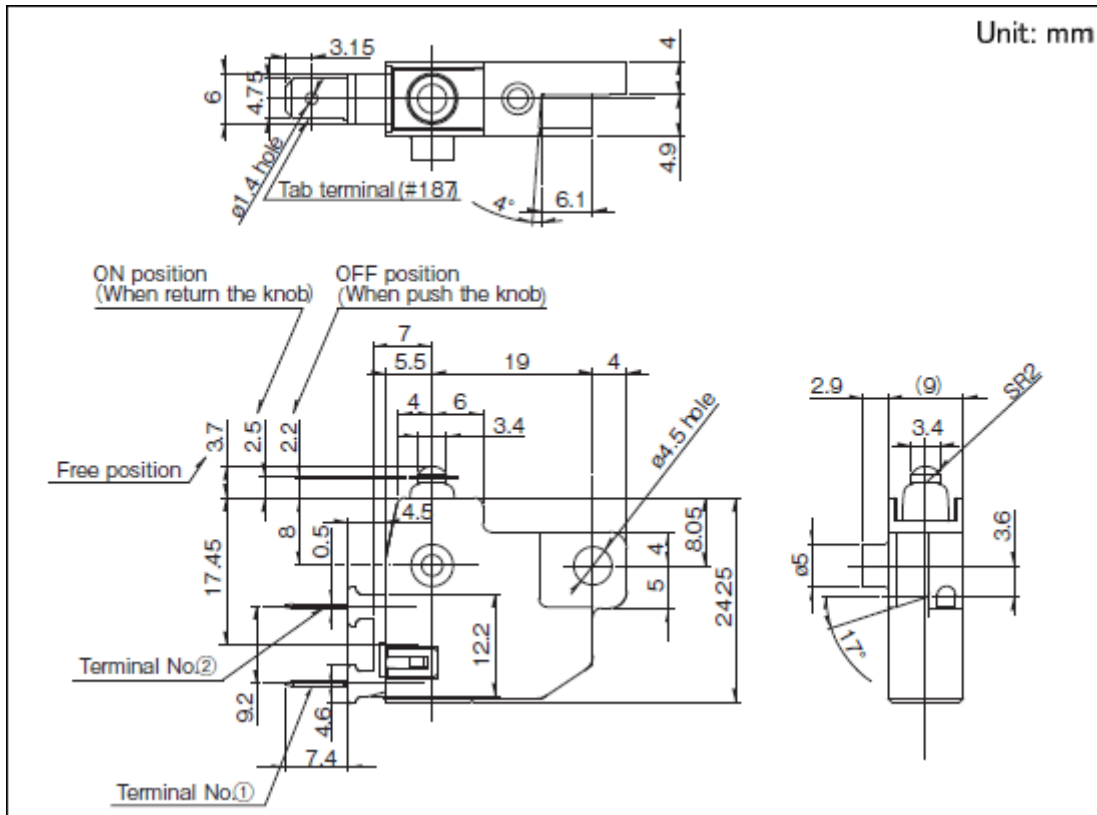
Type	Push	
Circuit arrangement	SPST (normally closed)	
Travel	3.7mm	
Operating force	4.6N max.	
Mounting method	Snap-in	
Terminal type	Tab Terminal (#187)	
Operating temperature range	-15°C to +80°C	
Rating	Rating max.	4.5A 12V DC (lamp: 27W×2pcs.)
	Rating min.	10mA 12V DC (resistive load)
Electrical performance	Contact resistance	500mΩ max
	Insulation resistance	10MΩ min. 500V DC
	Voltage proof	500V AC for 1minute
Mechanical performance	Terminal strength	Slider pull-out strength: 100N MIN
Durability	Operating life	100,000 cycles
Environmental performance	Cold	-15°C 96h

Dry heat	80°C 96h
Damp heat	40°C, 90 to 95%RH 96h

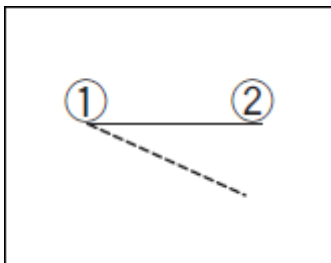
Water resistance standard IP68 equivalent

Minimum order unit (pcs.)	Japan	180
	Export	360

Dimensions



Circuit Diagram



Packing Specifications

Tray

Number of packages (pcs.)	1 case / Japan	180
	1 case / export packing	360

Export package measurements (mm)

400×270×185

Notes are common to this series/models.

1. This site catalog shows only outline specifications. When using the products, please obtain formal specifications for supply.
2. Please place purchase orders per minimum order unit (integer).

Inquiries about Products

Inquiry

X-ON Electronics

Largest Supplier of Electrical and Electronic Components

Click to view similar products for [Tactile Switches](#) category:

Click to view products by [ALPS](#) manufacturer:

Other Similar products are found below :

[5GTH92001](#) [1-1977120-4](#) [ADTSA62NV](#) [ADTSA62RV](#) [ADTSA63KV](#) [ADTSA644NV](#) [ADTSMW66NV](#) [ADTSMW67RV](#) [B3F-3123](#) [B3F-6055A](#) [B3F-B32-01-KIT](#) [1977177-8](#) [1977266-1](#) [ADTS644KV](#) [ADTSA61RV](#) [ADTSA63NV](#) [ADTSA63RV](#) [ADTSM21NSVTR](#) [ADTSM32NVTR](#) [ADTSM63SVTR](#) [ADTSM644KVTR](#) [ADTSMW64RV](#) [ADTSMW69NV](#) [FSMRA4JHA04](#) [GS4.70F300QP](#) [3ESH9R](#) [506E00201](#) [3FTL600RAS](#) [3FTL640RAS](#) [Y96K132V0FPLFS](#) [101-TS5022T1601-EV](#) [5GSH92001](#) [5GTH9658222](#) [KSJ0A231](#) [80SH](#) [LFG](#) [ADTSM31NVTR](#) [EVQ-P1D05K](#) [MJTP1162TR](#) [ADTSM63KV](#) [2-1977120-7](#) [TSJW-5.2-260-TR](#) [KMT011MNGJLHS](#) [B3WN6002S](#) [ADTSA648RV](#) [70-201.0](#) [ADTSG648NV](#) [ADTSM62KSVTR](#) [ATA600VTR](#) [ADTSG66RV](#) [ADTS61NV](#) [ADTSM62KVTR](#)