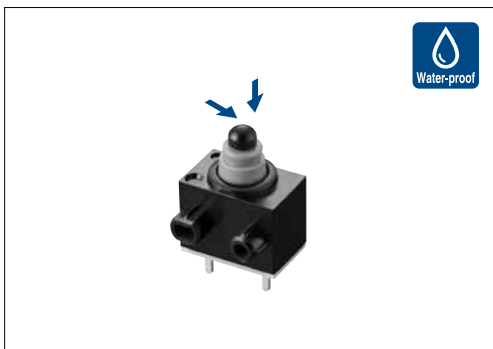


业界最小本体尺寸8.3×5.3×7mm。



主要规格

| 项目 | 规格 |
|------------------|---|
| 最大额定/最小额定 (电阻负载) | 0.1A 12V DC / 50μA 5V DC |
| 接触电阻 (初期/寿命后) | 500mΩ max. / 1Ω max. (标准型) 500mΩ max. / 3Ω max. (长寿命型) |
| 动作力 | 1±0.5N |
| 操作寿命 | 无负载 300,000 cycles (标准型) 1,000,000 cycles (长寿命型) |
| | 负载 300,000 cycles (标准型) 1,000,000 cycles (长寿命型) |

产品一览

| 电路数 | 接点数 | 电路 | 端子形状 | 主机形状 | 最小订货单位 (pcs.) | | 包装规格方式 | 产品编号 | | 图号 |
|-----|------|-------------|--------------|-------------|---------------|-------|------------|------------|------------|----|
| | | | | | 日本 | 出口 | | 标准型 | 长寿命型 | |
| 1 | 1 | N.O. | For PC board | 双突起 | 1,755 | 7,020 | A | SPVQ810102 | SPVQ830102 | 1 |
| | | | Angle | 单侧突起 | | | | SPVQ810302 | SPVQ830302 | 2 |
| | | | For PC board | 无突起 | | | | SPVQ810402 | SPVQ830402 | 3 |
| | | | For Lead | 单侧突起 | | | | SPVQ810502 | SPVQ830502 | 4 |
| | | | 压入 | 双突起 | | | | SPVQ810602 | SPVQ830602 | 5 |
| | | | 压入 | 单侧突起 | | | | SPVQ810704 | SPVQ830702 | 6 |
| | | N.C. | For PC board | 双突起 | | | | SPVQ810802 | SPVQ830802 | 7 |
| | | | Angle | 单侧突起 | | | | SPVQ811006 | SPVQ831002 | 8 |
| | | | For PC board | 无突起 | | | | SPVQ820102 | — | 1 |
| | | | For Lead | 单侧突起 | | | | SPVQ820302 | — | 9 |
| | | | 压入 | 双突起 | | | | SPVQ820402 | — | 3 |
| | | | 压入 | 单侧突起 | | | | SPVQ820502 | — | 4 |
| | N.O. | 带金属丝 (下部露出) | 单侧突起 | 400 | 1,600 | B | SPVQ820602 | — | 10 | |
| | | | 双突起 | | | | SPVQ820705 | — | 11 | |
| | | | 单侧突起 | | | | SPVQ820802 | — | 7 | |
| | | | 双突起 | | | | SPVQ821006 | — | 12 | |
| | | 带金属丝 (左侧露出) | 单侧突起 | SPVQ850101* | — | 13 | | | | |
| | | | 双突起 | SPVQ850201* | — | 14 | | | | |
| | | | 单侧突起 | SPVQ850301* | — | 15 | | | | |
| | | | 双突起 | SPVQ850501* | — | 16 | | | | |
| | N.C. | 带金属丝 (下部露出) | 单侧突起 | SPVQ860101* | — | 17 | | | | |
| | | | 双突起 | SPVQ860200* | — | 14 | | | | |
| | | 带金属丝 (左侧露出) | 单侧突起 | SPVQ860301* | — | 18 | | | | |
| | | | 双突起 | SPVQ860500* | — | 16 | | | | |

注

- ※有关带金属丝的产品, 请参考以下规格。
 - 导线长度, 颜色未指定时, 长度: 250mm, 颜色: 设定成红黑中任意一种。
 - 带电线(横拖线)的型号请务必指定回路 (N.O或N.C)。如未指定, 视为N.O回路。
 - 带线圈产品为订单生产
- 本产品不能在水中使用。(防尘/防水性能符合 符合IP67, 但端子部除外)

包装规格

托盘

| 包装规格方式 | 包装数 (pcs.) | | 出口包装箱尺寸 (mm) |
|----------|------------|-----------|--------------|
| | 1箱 / 日本 | 1箱 / 出口包装 | |
| A | 1,755 | 7,020 | 540×360×270 |

散装

| 包装规格方式 | 包装数 (pcs.) | | 出口包装箱尺寸 (mm) |
|----------|------------|-----------|--------------|
| | 1箱 / 日本 | 1箱 / 出口包装 | |
| B | 400 | 1,600 | 555×375×223 |

外形图

Unit:mm

| No. | 形状 | No. | 形状 |
|-----|---|-----|---|
| 1 | <p>Technical drawing of SPVQ8 model 1. It includes a top view and a side view. Labels include: "The top of the plunger (Measurement position)", "Limit total travel position", "Terminal No. ①-② Operating position", "Free position", "Terminal No. ②", and "Terminal No. ①". Dimensions shown are 6.5, 0.5, 3, 5, 5.3, 7.1, 7.6, 0.8, 2-0.6, 5.08, 8.3, and 92.2.</p> | 5 | <p>Technical drawing of SPVQ8 model 5. It includes a top view and a side view. Labels include: "The top of the plunger (Measurement position)", "Limit total travel position", "Terminal No. ①-② Operating position", "Free position", "Terminal No. ②", and "Terminal No. ①". Dimensions shown are 6.5, 0.5, 3, 5, 5.3, 7.1, 7.6, 0.8, 2-0.6, 5.08, 8.3, 92.2, 2, 2.6, and 5.3.</p> |
| 2 | <p>Technical drawing of SPVQ8 model 2. It includes a top view and a side view. Labels include: "The top of the plunger (Measurement position)", "Limit total travel position", "Terminal No. ①-② Operating position", "Free position", "Terminal No. ②", and "Terminal No. ①". Dimensions shown are 6.5, 0.5, 3, 5, 5.3, 7.1, 7.6, 0.8, 2-0.6, 5.08, 8.3, 92.2, 2, 2.6, 5.7, (2.6), and 5.3.</p> | 6 | <p>Technical drawing of SPVQ8 model 6. It includes a top view and a side view. Labels include: "The top of the plunger (Measurement position)", "Limit total travel position", "Terminal No. ①-② Operating position", "Free position", "Terminal No. ②", and "Terminal No. ①". Dimensions shown are 6.5, 0.5, 3, 5, 5.3, 7.1, 7.6, 0.8, 2-0.6, 5.08, 8.3, 92.2, 2, 2.6, 3.8, 1.8, 3.5, 1.2, 2.2, 4.08, and 5.3.</p> |
| 3 | <p>Technical drawing of SPVQ8 model 3. It includes a top view and a side view. Labels include: "The top of the plunger (Measurement position)", "Limit total travel position", "Terminal No. ①-② Operating position", "Free position", "Terminal No. ②", and "Terminal No. ①". Dimensions shown are 6.5, 0.5, 3, 5, 5.3, 7.1, 7.6, 0.8, 2-0.6, 5.08, 8.3, 92.2, 2, 2.6, 10.6, 11.1, 2.2, (90°), (2.6), and 5.3.</p> | 7 | <p>Technical drawing of SPVQ8 model 7. It includes a top view and a side view. Labels include: "The top of the plunger (Measurement position)", "Limit total travel position", "Terminal No. ①-② Operating position", "Free position", "Terminal No. ②", and "Terminal No. ①". Dimensions shown are 6.5, 0.5, 3, 5, 5.3, 7.1, 7.6, 0.8, 2-0.6, 5.08, 8.3, 92.2, 2, 2.6, 3.8, 1.8, 3.5, 1.2, 2.2, 4.08, and 5.3.</p> |
| 4 | <p>Technical drawing of SPVQ8 model 4. It includes a top view and a side view. Labels include: "The top of the plunger (Measurement position)", "Limit total travel position", "Terminal No. ①-② Operating position", "Free position", "Terminal No. ②", and "Terminal No. ①". Dimensions shown are 6.5, 0.5, 3, 5, 5.3, 7.1, 7.6, 0.8, 2-0.6, 5.08, 8.3, 92.2, 2, 2.6, 11.1, 11.6, and 5.3.</p> | 8 | <p>Technical drawing of SPVQ8 model 8. It includes a top view and a side view. Labels include: "The top of the plunger (Measurement position)", "Limit total travel position", "Terminal No. ①-② Operating position", "Free position", "Terminal No. ②", and "Terminal No. ①". Dimensions shown are 6.5, 0.5, 3, 5, 5.3, 7.1, 7.6, 0.8, 2-0.6, 5.08, 8.3, 92.2, 2, 2.6, 1.8, 5.6, 0.31, 2.2, 0.8, and 5.3.</p> |

检测

滑动

按动

旋转

电源

切换式

通用型

防水型

急速切换型

外形图

Unit:mm

| No. | 形状 | No. | 形状 |
|-----|----|-----|----|
| 9 | | 12 | |
| 10 | | 13 | |
| 11 | | 14 | |

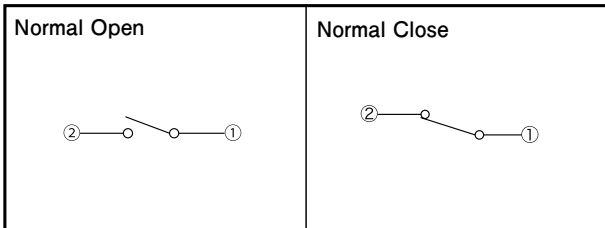
检测
滑动
按动
旋转
电源
切换式
通用型
防水型
急速切换型

外形图

Unit:mm

| No. | 形状 | No. | 形状 |
|-----|----|-----|----|
| 15 | | 17 | |
| 16 | | 18 | |

电路图

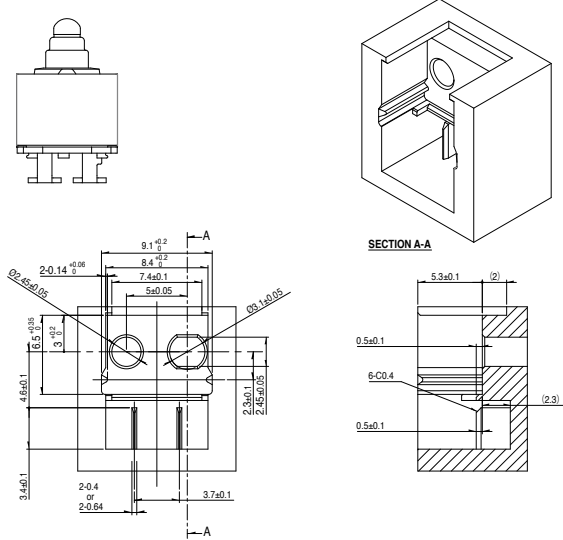


■ 压接端子 (N.O.) 的推荐组装端子形状

Unit:mm

形状

SPVQ811006, SPVQ831002

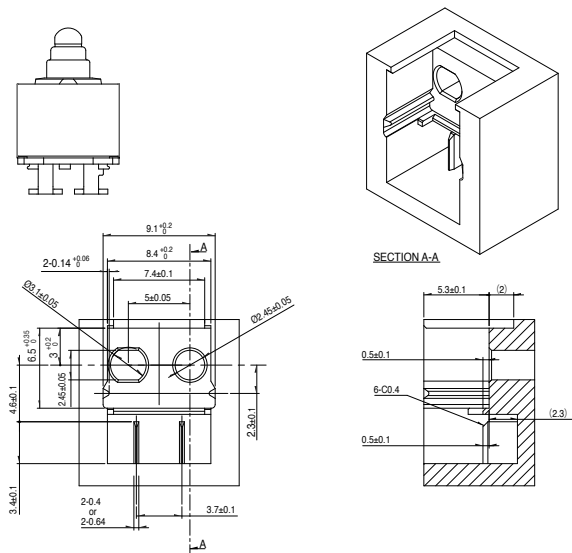






■ 压接端子 (N.C.) 的推荐组装端子形状

Unit:mm

形状

SPVQ821006



| 系列 | | 防水型 | | | 急速切换型 | |
|--------------|------------------------|---|---|---|---|---|
| | | SPVQ8 | SPVQA | SSCN | SPVQ9 | SPVQC |
| 照片 | |  |  |  |  |  |
| 动作形式 | | 2 方向 | | | | |
| 外形尺寸 (mm) | W | 8.3 | 15.2 | 13 | 15.4 | 15.4 |
| | D | 5.3 | 6.4 | 5 | 8.4 | 7.4 |
| | H | 6.5 | 7.95 | 15 | 7.5 | |
| 使用温度范围 | | -40°C to +85°C | | | | |
| 车用产品 | | ● | ● | ● | ● | ● |
| 生命周期 | |  |  |  |  |  |
| 电路数 / 接点数 | | 1/1 | 1/1 1/2 | 1/2 | 2/2 | |
| 最大额定 (电阻负载) | | 0.1A 12V DC | | | 50mA 26V DC | 50mA 18V DC |
| 最小额定 (电阻负载) | | 50μA 5V DC | | 100μA 5V DC | 50μA 5V DC | |
| 耐久性 | 无负载寿命 | 300,000cycles 1Ω max. or 1,000,000cycles 3Ω max. | 300,000cycles 1Ω max. | 100,000cycles 1Ω max. | 300,000cycles 200mΩ max. | — |
| | 负载寿命 最大额定 (电阻负载) | 300,000cycles 1Ω max. or 1,000,000cycles 3Ω max. | 300,000cycles 1Ω max. | 100,000cycles 1Ω max. | 300,000cycles 200mΩ max. | |
| 电性能 | 初期接触电阻 | 500mΩ max. | | | 75mΩ max. | |
| | 绝缘电阻 | 100MΩ min. 500V DC | | | | 100MΩ min. 250V DC |
| | 耐电压 | 500V AC for 1minute | | | | 250V AC for 1minute |
| 机械性能 | 端子强度 | 3N for 1minute (端子型产品) Wire strength 30N for 1minute (with wire) | 3N for 1minute | | | |
| | 操作部强度 | 20N | | 10N | 20N | |
| 耐环境性能 | 耐寒性能 | -40°C 500h | | | | |
| | 耐热性能 | 85°C 500h | | | | |
| | 耐湿性能 | 60°C, 90 to 95% RH 500h | | | | |
| 动作力 | | 1±0.5N | | 2N max. | 1±0.5N | |
| 页 | | 55 | 60 | 63 | 64 | 65 |

检测开关焊接条件 66

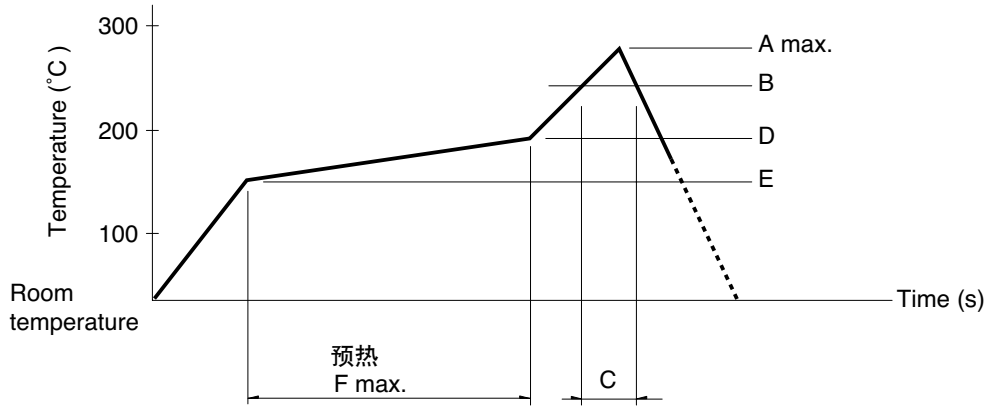
使用检测开关时的注意事项 67

注

表中的 ● 符号表示适用于系列内的全部产品。

回流方式的参考举例

1. 加热方式远红外线加热的上下加热方式。
2. 温度测量方式用 $\phi 0.1 \sim \phi 0.2$ 的CA (K) 或CC (T) 进行测量。在焊接的连接部位置 (铜箔面) 测量, 固定方式使用耐热载带。
3. 温度分布



| 系列 (回流型) | A (°C) 3s max. | B (°C) | C (s) | D (°C) | E (°C) | F (s) |
|----------|----------------|--------|-------|--------|--------|-------|
| SPPB | 250 | 230 | 40 | 180 | 150 | 120 |
| SPVE | 260 | | 40 | | | |
| SPVL | | | | | | |
| SPVM | | | | | | |
| SPVN | | | | | | |
| SPVR | | | | | | |
| SPVS | | | | | | |
| SPVT | | | | | | |
| SSCM | | | | | | |
| SSCQ | | | | | | |
| SPVQC | 250 | | | | | |

注

1. 上述条件, 为印刷电路板的零部品表面的温度。根据电路板的材质, 大小, 厚度等, 电路板温度和开关表面温度会有很大的不同, 关于开关表面温度, 也请在上述条件内使用。
2. 根据贴面焊槽的种类, 条件不同结果不同, 请事先充分进行确认之后使用。

手工焊接方式的参考举例

| 项目 | 焊接温度 | 焊接时间 |
|--|----------|---------|
| SPVS, SPVN, SSPVT, SPVM, SPVR, SPVE, SSCQ, SSCM, SPVL, SSCT, SPVQC | 350±5°C | 3s max. |
| SPVQ1, SPVQ3, SPVQ6, SPVQ7, SPVQ8, SPVQ9, SSCN, SPVQA | 300±10°C | 3+1/0s |
| SPPB (Reflow) | 350±5°C | 5s max. |
| SSCF, SPPB (For Lead, Dip) | 350±10°C | 3+1/0s |

浸焊方式的参考举例

适用于 For PC board 端子型

| 项目 | 项目 | | 浸焊 | |
|---|-------------|----------|---------|--------|
| | 预热温度 | 预热时间 | 焊接温度 | 焊接浸渍时间 |
| SSCT, SPVQ1, SPVQ3, SPVQ6, SPVQ7, SPVQ8, SPVQ9, SPVQA | 100±10°C | 60s max. | 260±5°C | 5±1s |
| SPPW8, SPPB | 100 °C max. | 60s max. | 255±5°C | 5±1s |
| SSCF | — | — | 260±5°C | 5±1s |

X-ON Electronics

Largest Supplier of Electrical and Electronic Components

Click to view similar products for [Basic / Snap Action Switches](#) category:

Click to view products by [ALPS](#) manufacturer:

Other Similar products are found below :

[83228001](#) [01.098.1358.1](#) [602EN1-6B](#) [602EN532](#) [602EN535-RB](#) [602HE5-RB1](#) [604HE162](#) [604HE223-6B](#) [624HE17-RB](#) [6HM89](#) [6PA78-JM](#)
[6SE1](#) [6SX1-H58](#) [70500840](#) [MBD5B1](#) [MBH2731](#) [73-316-0012](#) [79211759](#) [79211923](#) [79218589](#) [7AS12](#) [ML-1155](#) [ML-1376](#) [831010C3.0](#)
[831060C3.TL](#) [831090C2.EL](#) [83131904](#) [84212012](#) [8AS239](#) [8HM73-3](#) [903VB1-PG](#) [914CE1-6G](#) [PL-100](#) [11SM1077-H4](#) [11SM1077-H58](#)
[11SM1-TN107](#) [11SM405](#) [11SM703-T](#) [11SM8423-H2](#) [11SX37-T](#) [11SX48-H58](#) [11SX55-H58](#) [11SM2442-T](#) [11SM76-T](#) [11SM77-H58](#)
[11SM77-T](#) [11SM863-T](#) [11SM866](#) [11SX47-H58](#) [A7CN-1M-1-LEFT](#)