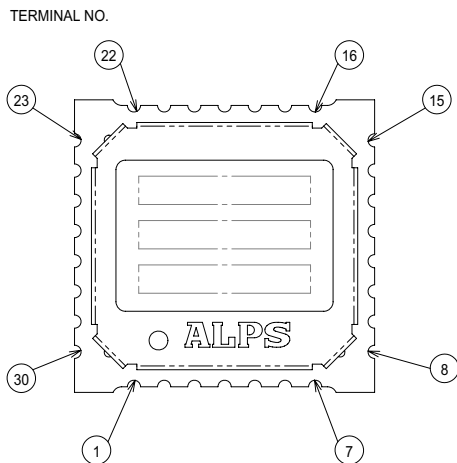
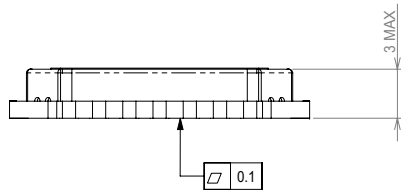
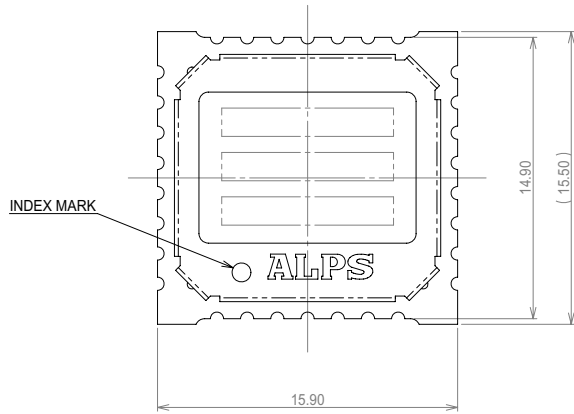


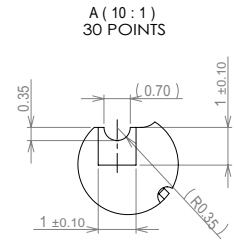
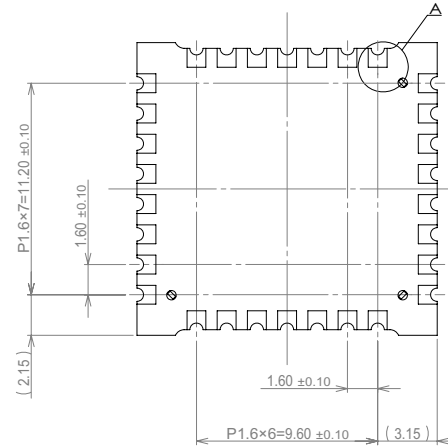
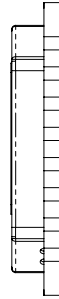
# ALPS CONFIDENTIAL

PRELIMINARY

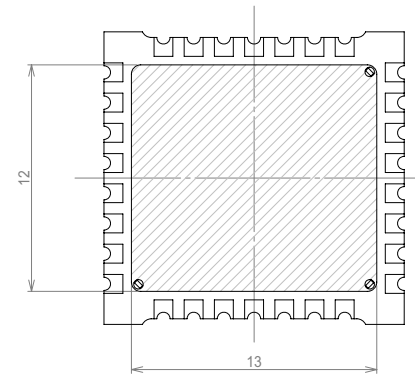


TERMINALS

- |              |            |
|--------------|------------|
| 1.GND        | 16.GND     |
| 2.AGC        | 17.RST     |
| 3.GND        | 18.SEN     |
| 4.FM_ANT     | 19.SCLK    |
| 5.GND        | 20.SDIOI   |
| 6.AM_ANT     | 21.RCLK    |
| 7.GND        | 22.GND     |
| 8.GND        | 23.GND     |
| 9.V-LNA_IN   | 24.VDD     |
| 10.GND       | 25.VDD_GND |
| 11.LW-MW_SW  | 26.R_OUT   |
| 12.SW_PORT   | 27.L_OUT   |
| 13.V-LNA_OUT | 28.GND     |
| 14.RF_VDD    | 29.VIO     |
| 15.GND       | 30.GND     |



INHIBITED AREA ( HATCHING AREA ) FOR PATTERN LAND



NOTES

- 1.TOLERANCES ARE ±0.5mm, UNLESS OTHERWISE SPECIFIED.
- 2.LOT NO. IS SPECIFIED BY ALPS STANDARD SPECIFICATION.

	TDGL2
CUST. MODEL NO.	ALPS MODEL NO.

PART NO.	NAME	MATERIAL	SPEC.	FINISH
		<b>ALPS ELECTRIC CO., LTD.</b>		
		DSGD. May.12,'11 Y.Sugimori	SCALE 5:1	TITLE TDGL2 ASSEMBLY DRAWING
		CHKD.	UNIT mm	
		APPD.		
ZONE 6	SYMB.	DATE OR NO.	APPD. CHKD. DSGD.	KEY No.

## X-ON Electronics

Largest Supplier of Electrical and Electronic Components

*Click to view similar products for [Tuners](#) category:*

*Click to view products by [ALPS](#) manufacturer:*

Other Similar products are found below :

[LV25700PM-MPB-E](#) [LA1781MD-B-MPB-E](#) [LA1837M-TLM-E](#) [TCP-4127UB-DT](#) [LA1781ML-MPB-E](#) [TDA18250BHN/C1K](#) [TCP-5082UB-DT](#) [TCP-5056UB-DT](#) [TCP-5018UB-DT](#) [MAX2160ETL+](#) [MAX2223ETI+](#) [MAX2170ETL+](#) [TDA7706M](#) [SI2141-A10-GM](#) [Si4702-C19-GM](#) [SI4702-C19-GMR](#) [TDA7705](#) [MAX2135AETN](#) [MAX2121ETI+](#) [MAX2120CTI+](#) [MAX2112CTI+](#) [MAX2135AETN/V+](#) [TCP-5068UB-DT](#)