

**6 Pole  
With Ground**  
PROTECTION  
**IP65**  
RATING  
E307105  
CE

**Component  
Parts**

**Pre-Assembled Units**

**Covers**

**Bulkhead Housing**

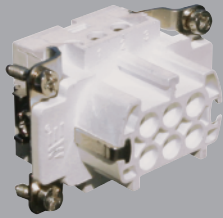


29130



403090

**FEMALE  
Insert**



29120

**Hood**



29132  
29132M

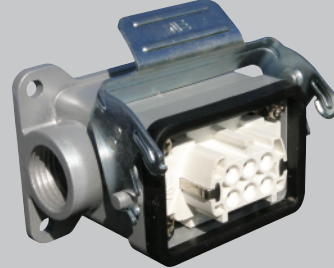


403095  
403095M



29644

**Surface Mount  
Housing**



Standard Part Numbers  
are NPT threads.  
Part numbers with an "M"  
are metric thread.

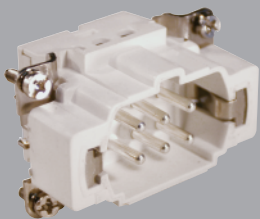
**1 Hole**  
29133  
29133M

**2 Hole**  
29134  
29134M

**1 Hole**  
403096  
403096M

**2 Hole**  
403098  
403098M

**MALE  
Insert**



29121

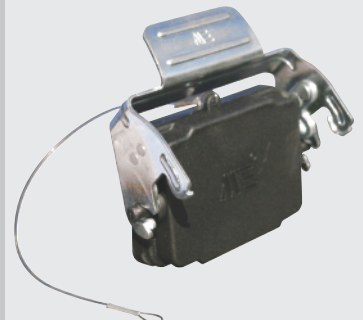
**Hood**



29131  
29131M



403093  
403093M



29646



Connectors should not be coupled  
and decoupled under electrical load.

**Inserts**

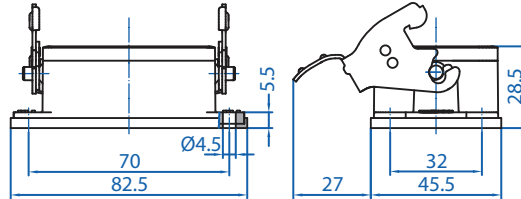
Number of contacts	6 Pole w/ ground
Electrical data to DIN EN61 984	16A 400V 6KV 3
Current	16A
Voltage	400V
Rated Impulse Voltage	6KV
Insulation Resistance	≥10 <sup>10</sup> Ω
Temperature Range	-40 to 125°C
Flammability	UL94-V0

**Contacts**

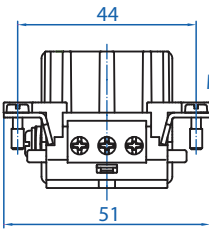
Screw terminal	
Material	Copper alloy
Surface plated	hard-silver
Contact resistance	≤ 1m Ω
Wire size	2.5mm <sup>2</sup> / 14 AWG
Torque	0.5Nm
Stripping Length	7.5mm

**Metal Hoods & Housings**

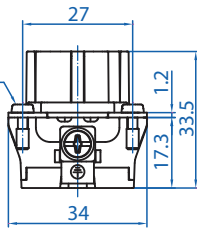
Material	Aluminum
Surface	Powder coated
Seals	NBR
Degree of Protection Acc To	
DIN EN60529 for coupled connectors	IP65
Thread Size	NPT 1/2" or M20



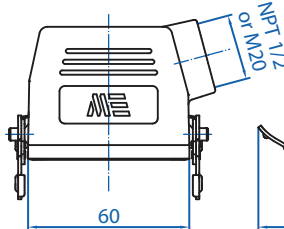
29130



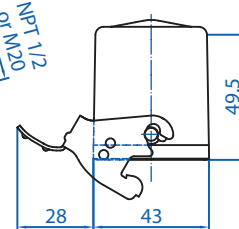
29120



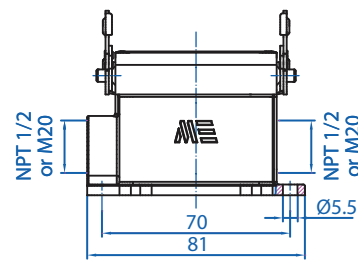
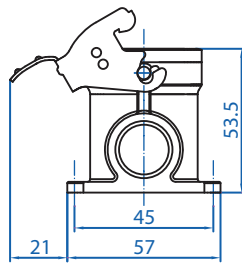
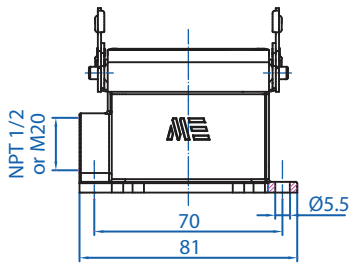
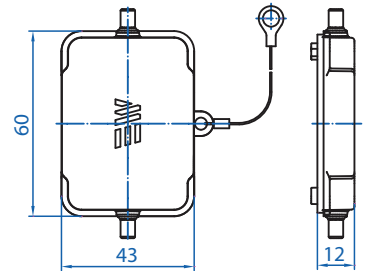
29132



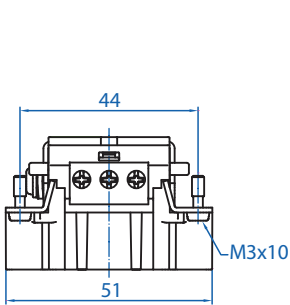
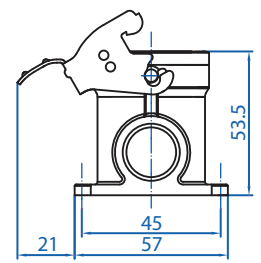
29644



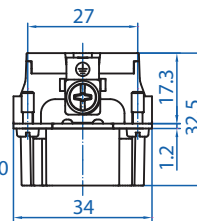
29133



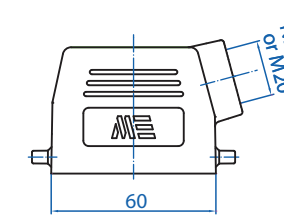
29134



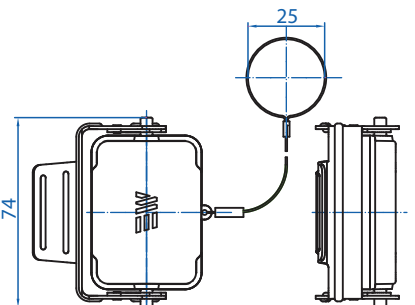
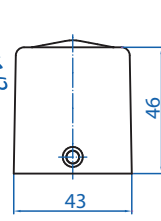
29121



29131



29646



Connectors should not be coupled and decoupled under electrical load.

All dimensions are shown in millimeters. To convert to inches divide by 25.4.

## X-ON Electronics

Largest Supplier of Electrical and Electronic Components

*Click to view similar products for [Heavy Duty Power Connectors](#) category:*

*Click to view products by [Altech](#) manufacturer:*

Other Similar products are found below :

[647757-1](#) [6643411-1](#) [6646058-2](#) [6646137-1](#) [6646138-1](#) [6646479-1](#) [6646608-1](#) [6646786-1](#) [6646940-1](#) [6651091-1](#) [6651525-1](#) [6651529-1](#)  
[6651788-1](#) [696475-1](#) [73000005059](#) [73000005642](#) [765-15-0080A](#) [765-16-0080B](#) [829992-1](#) [902-77-02113](#) [129-1J](#) [AN0024023](#) [E6374G1](#)  
[e6389g2](#) [157-43GW8](#) [MS3117-14AC](#) [1643543-1](#) [1650540-1](#) [1651811-2](#) [1766260-1](#) [1766282-1](#) [1766966-1](#) [1791340000](#) [NLDFT-3-BL-L-](#)  
[S120-M40A](#) [NLDFT-N-W-L-C240-M40B](#) [NLS-2-R-C240-M40B](#) [NLS-N-W-C240-M40B](#) [NPS-3-BL-T6](#) [1986615-1](#) [2-1589900-8](#) [2199314-1](#)  
[KA8102](#) [9300480317](#) [SBS50BRN#6](#) [29131](#) [29652](#) [1646905-1](#) [1648320-1](#) [1648582-1](#) [1650195-2](#)