

**24 Pole  
with Ground**  
PROTECTION  
**IP65**  
RATING

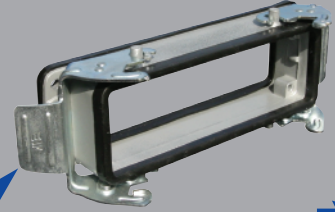


**Component  
Parts**

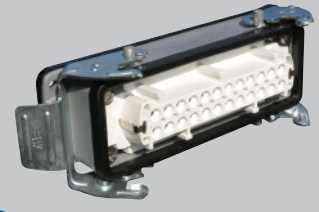
**Pre-Assembled Units**

**Covers**

**Bulkhead Housing**



29044

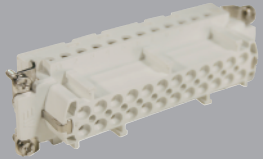


403040

**FEMALE**

**Hood**

**Insert**



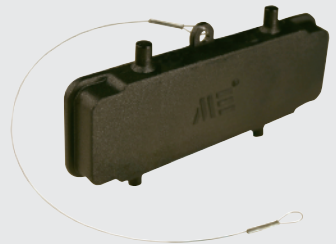
29024



29051  
29051M



403045  
403045M



29652

**Surface Mount  
Housing**



**1 Hole**  
29058  
29058M

**2 Hole**  
29059  
29059M



**1 Hole**  
403046  
403046M

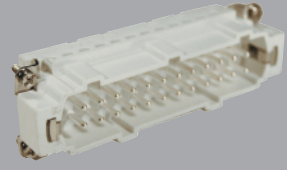
**2 Hole**  
403048  
403048M

Standard Part Numbers are  
NPT threads.  
Part numbers with an "M"  
are metric thread.

**MALE**

**Hood**

**Insert**



29025



29045  
29045M



403043  
403043M



29655



Connectors should not be coupled  
and decoupled under electrical load.

**Inserts**

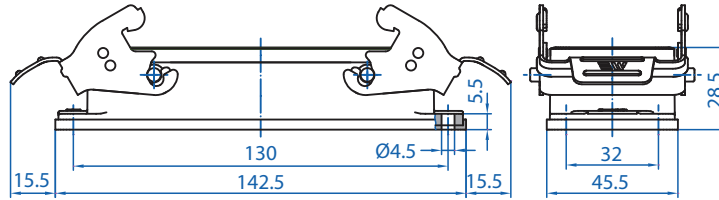
Number of contacts	24 Pole w/ ground
Electrical data to DIN EN61 984	16A 400V 6KV 3
Current	16A
Voltage	400V
Rated Impulse Voltage	6KV
Insulation Resistance	≥10 <sup>10</sup> Ω
Temperature Range	-40 to 125°C
Flammability	UL94-V0

**Contacts**

Screw terminal	
Material	Copper alloy
Surface plated	hard-silver
Contact resistance	≤ 1m Ω
Wire size	2.5mm <sup>2</sup> / 14 AWG
Torque	0.5Nm
Stripping Length	7.5mm

**Metal Hoods & Housings**

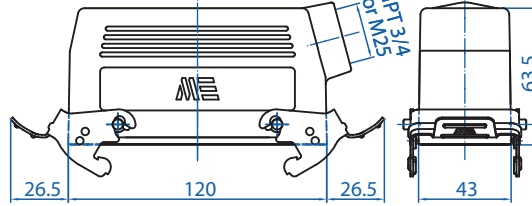
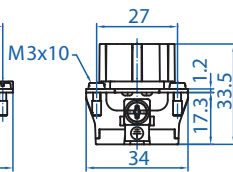
Material	Aluminum
Surface	Powder coated
Seals	NBR
Degree of Protection Acc To	
DIN EN60529 for coupled connectors	IP65
Thread Size	NPT 3/4" or M25



29044



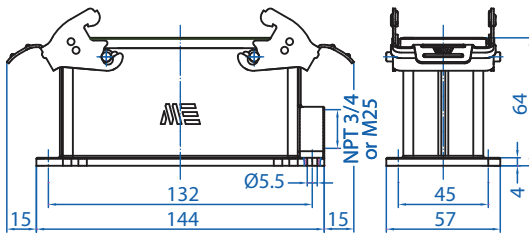
29024



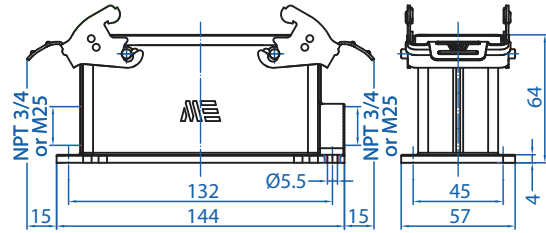
29051



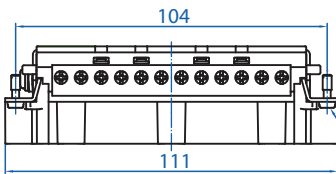
29652



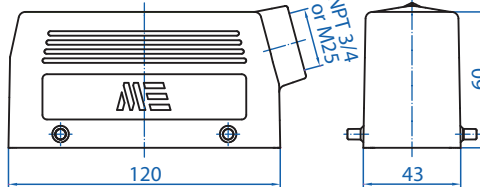
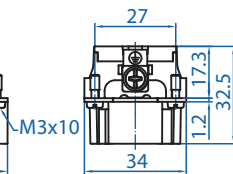
29058



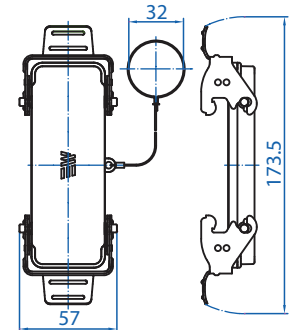
29059



29025



29045



29655



Connectors should not be coupled and decoupled under electrical load.

All dimensions are shown in millimeters. To convert to inches divide by 25.4.

## X-ON Electronics

Largest Supplier of Electrical and Electronic Components

*Click to view similar products for [Heavy Duty Power Connectors](#) category:*

*Click to view products by [Altech](#) manufacturer:*

Other Similar products are found below :

[647757-1](#) [6643411-1](#) [6646058-2](#) [6646137-1](#) [6646138-1](#) [6646479-1](#) [6646608-1](#) [6646786-1](#) [6646940-1](#) [6651091-1](#) [6651525-1](#) [6651529-1](#)  
[6651788-1](#) [696475-1](#) [73000005059](#) [73000005642](#) [765-15-0080A](#) [765-16-0080B](#) [829992-1](#) [902-77-02113](#) [129-1J](#) [AN0024023](#) [E6374G1](#)  
[e6389g2](#) [157-43GW8](#) [MS3117-14AC](#) [1643543-1](#) [1650540-1](#) [1651811-2](#) [1766260-1](#) [1766282-1](#) [1766966-1](#) [1791340000](#) [NLDFT-3-BL-L-](#)  
[S120-M40A](#) [NLDFT-N-W-L-C240-M40B](#) [NLS-2-R-C240-M40B](#) [NLS-N-W-C240-M40B](#) [NPS-3-BL-T6](#) [1986615-1](#) [2-1589900-8](#) [2199314-1](#)  
[KA8102](#) [9300480317](#) [SBS50BRN#6](#) [29131](#) [29652](#) [1646905-1](#) [1648320-1](#) [1648582-1](#) [1650195-2](#)