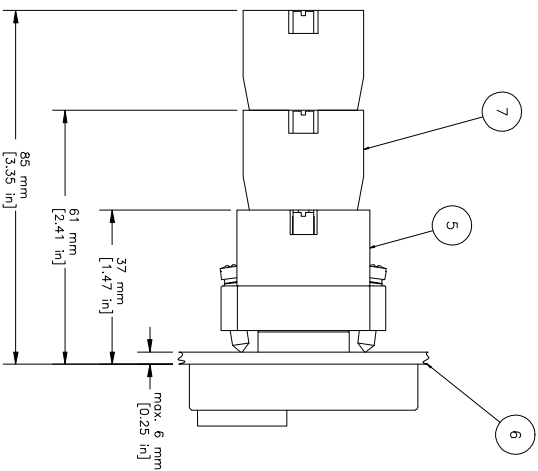
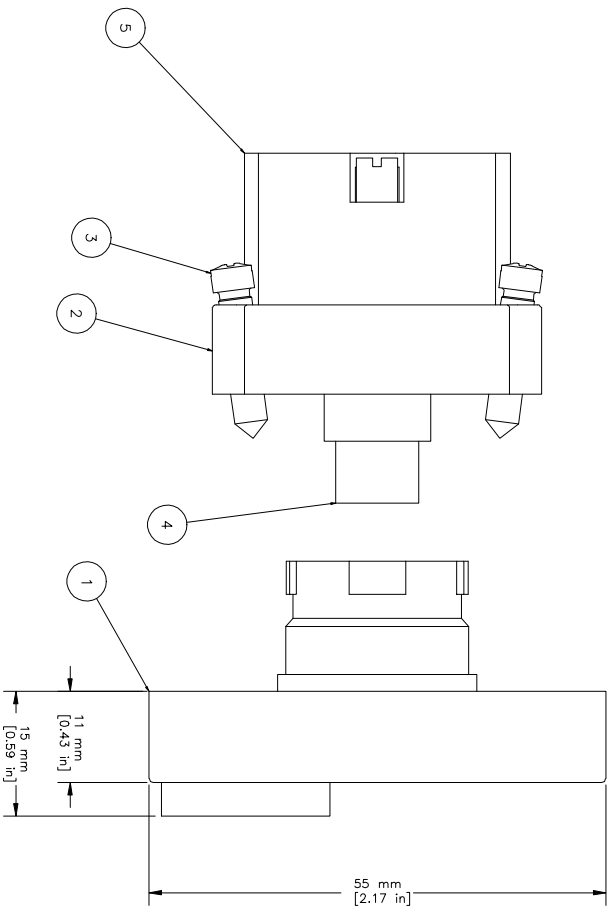
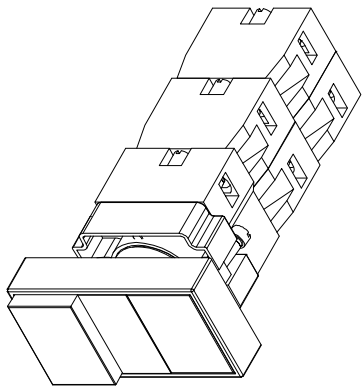


REVISIONS FOR DWG # 1PB-ATL5LB F3P4-XXX				
REV	CH. NO.	DESCRIPTION	DATE	REVISD BY
-	-	ORIGINAL DESIGN	10/31/07	Phil E.



ITEM	DESCRIPTION	CAT. NO.	VOLTAGE	COLOR	MIN. QTY.	MAX. QTY.
1	Twin Touch/ly Not marked, red projecting, illuminated center (comes with 2BRK)	2A TL5LB F3P4-012 2A TL5LB F3P4-024 2A TL5LB F3P4-048 2A TL5LB F3P4-110 2A TL5LB F3P4-230	10 V AC/DC 24 V AC/DC 48 V AC/DC 110 V AC/DC 230 V AC/DC	Red/Green, Amber Red/Green, Amber Red/Green, Amber Red/Green, Amber Red/Green, Amber	1 1 1 1 1	1 1 1 1 1
2	Mounting Bracket	2BRK	-	-	1	1
3	Mounting Bracket Screws	Incl. in 2BRK	-	-	2	2
4	LED Bulb	Incl. in 2BRK	-	-	1	1
5	Bulb Holder	Incl. in 2BRK	-	-	1	1
6	Panel	-	-	-	-	-
7	Switch Contacts	S1	-	Green	1	4
		S2	-	Red	1	4
		S3	-	Green/Gray	1	4
		S4	-	Red/Gray	1	4

TITLE: 22mm Twin Touch Metal Illuminated Projecting Operators 2ATL5LB F3P4-xxx (xxx=voltage)

DRAWN BY: Philipp Ernsterberger	10/31/07	DRAWING NO.: 1PB-ATL5LB F3P4-XXX	REV.: -
CHECKED BY: Laszlo Gyorgypal	10/31/07	SCALE: -	
RELEASED BY: Laszlo Gyorgypal	10/31/07	SHEET: 1	OF: 1

UNLESS OTHERWISE SPECIFIED
 • ALL DIMENSIONS ARE IN MILLIMETERS
 • THIRD ANGLE PROJECTION

TOLERANCE

XX	±1 mm
XX.X	±0.5 mm
XX.XX	±0.2 mm
ALL	- mm

This Drawing is the property of **Attech Corp.**
 AND IS A CONFIDENTIAL DISCLOSURE LENT WITHOUT CONSIDERATION OTHER THAN THE BORROWER'S AGREEMENT THAT IT SHALL NOT BE REPRODUCED, COPIED, LENT, OR DISPOSED OF DIRECTLY OR INDIRECTLY NOR USED FOR ANY PURPOSE OTHER THAN THAT FOR WHICH IT IS SPECIFICALLY FURNISHED.

M-H-R-C
 35 Royal Road
 Flemington NJ 08822-6000
 (908) 806-9400 • Fax (908) 806-9490

X-ON Electronics

Largest Supplier of Electrical and Electronic Components

Click to view similar products for [Pushbutton Switches](#) category:

Click to view products by [Altech](#) manufacturer:

Other Similar products are found below :

[8940K2012](#) [LW1L-M1C10V-A](#) [LW1L-M1C70-A](#) [LW2L-A1C20M-GD](#) [LW2L-M1C20M-A](#) [60324L](#) [M22-D-R-GB0/K11](#) [M7E-HRN2](#)
[67021K512](#) [67081K512X](#) [701PB580](#) [7190K101](#) [7199K101](#) [810K12910](#) [810KSV30B](#) [MML21EA2ADK](#) [MML21KA3ABK](#)
[MML23KA3AC05K-001](#) [MML23KW3AA01W](#) [8418K2](#) [8442K3](#) [8450K1](#) [860K11911T01A](#) [861901](#) [861K11911T01A07](#)
[861K13810T00A14](#) [861K13911](#) [8646AB6X718UL](#) [8646ABUL](#) [9001KXRK](#) [907AYY100](#) [PMHD155A1](#) [95-313.000](#)
[9533CD4+U574+U4922](#) [95-414.000](#) [99-450.837](#) [99-453.837](#) [PV3H2B0NN-341](#) [1203MRA](#) [A22NZBGANGA](#) [A22NZBMMNGA](#)
[A22NZBNANGA](#) [A22NZMPATRA](#) [A2PMA1X03EC56](#) [A3A-5123-02](#) [A3A-7140](#) [A3A-7310](#) [A3A-7340](#) [A3U-TMW-A2C-5M](#) [A595](#)