

UL-Series - UL489 Miniature Molded Case Circuit Breaker - 2 pole C-Trip - DC



0.3-32A:
1.74kg (3.83lb.)

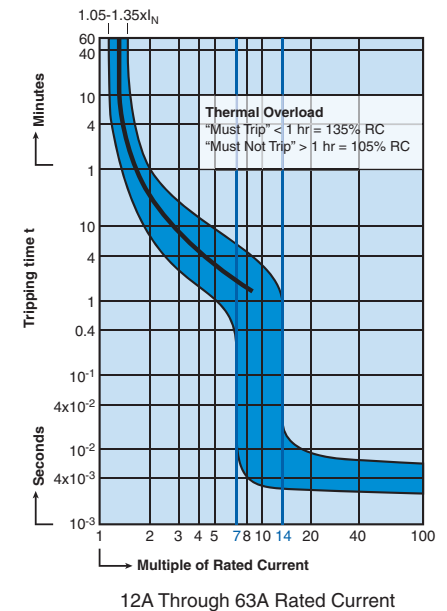
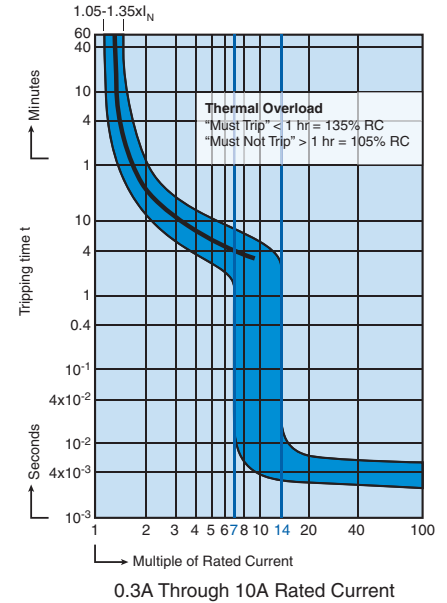


Two Pole

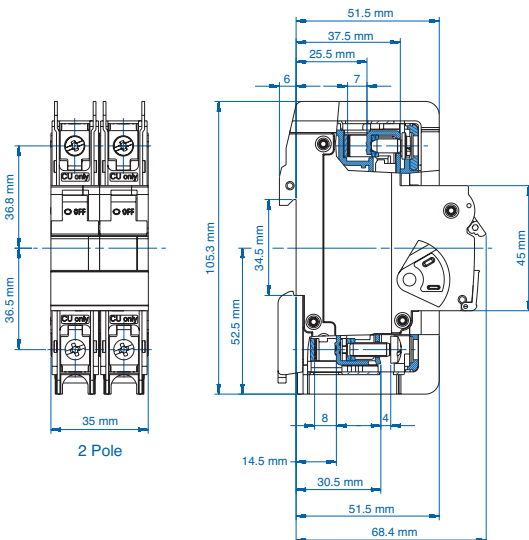
Standard Pack: 6

Weight:
0.3-32A:
1.74kg (3.83lb.)
40-63A:
1.98kg (4.37lb.)

| Rated Current | Type/ Cat. No. | Rated Voltage |
|---------------|-------------------|---------------|
| 0.3A | 2C03DL | 250V DC |
| 0.5A | 2C05DL | 250V DC |
| 1.0A | 2C1DL | 250V DC |
| 1.6A | 2C1.6DL | 250V DC |
| 2.0A | 2C2DL | 250V DC |
| 3.0A | 2C3DL | 250V DC |
| 4.0A | 2C4DL | 250V DC |
| 5.0A | 2C5DL | 250V DC |
| 6.0A | 2C6DL | 250V DC |
| 8.0A | 2C8DL | 250V DC |
| 10A | 2C10DL | 250V DC |
| 12A | 2C12DL | 250V DC |
| 13A | 2C13DL | 250V DC |
| 15A | 2C15DL | 250V DC |
| 16A | 2C16DL | 250V DC |
| 20A | 2C20DL | 250V DC |
| 25A | 2C25DL | 250V DC |
| 30A | 2C30DL | 250V DC |
| 32A | 2C32DL | 250V DC |
| 40A | 2C40DL | 250V DC |
| 50A | 2C50DL | 250V DC |
| 60A | 2C60DL | 250V DC |
| 63A | 2C63DL | 250V DC |



| | |
|---------------------------------|--|
| Current/ Voltage Rating | 0.3 - 63A/ 250V DC |
| Calibration Temperature | 40°C (104°F) |
| Ambient Temperature | -25°C to +55°C (-13°F to 131°F) |
| Storage Temperature | -40°C to +70°C (-40°F to 158°F) |
| Terminal Torque (min/max) | 2 Nm (17.7 lb.in.) / 2.5Nm (22.2 lb.in) |
| Electrical Life | 6000 switching cycles ON/ OFF |
| Mechanical Life | 10000 switching cycles ON/ OFF |
| Vibration Resistance | > 15g according to DIN EN 60069-2-59 during a load with $I_1 = 1.05 \times I_N$ |
| Resistance to mechanical shocks | 25g @ 11ms |



"C" Magnetic Trip Parameters

Rated current 0.3A to 63A.

1. Hold for a minimum of 100ms at surge of 7 times rated current.
2. Trip in under 100ms at 14 times rated current.

Short Circuit Interrupting Capacity

DC

| No. Poles | Type | 0.3-32A | 40-63A |
|-----------|------|-------------|-------------|
| 2 | DC | 10kA @ 250V | 10kA @ 250V |

X-ON Electronics

Largest Supplier of Electrical and Electronic Components

Click to view similar products for [Circuit Breakers](#) category:

Click to view products by [Altech](#) manufacturer:

Other Similar products are found below :

[LUGZX66-1-61-20.0-44](#) [M39019/01-201S](#) [M39019/01-221](#) [M39019/01-323](#) [M39019/01-333](#) [M39019/01-336](#) [M39019/02-248](#) [M39019/02-311](#) [M39019/02-316](#) [M39019/04-249S](#) [M39019/05-246S](#) [M39019/06-254S](#) [M55629/1-016](#) [M55629/1-018](#) [M55629/1-021](#) [M55629/1-033](#) [M55629/1-036](#) [M55629/1-046](#) [M55629/1-048](#) [M55629/1-058](#) [M55629/1-067](#) [M55629/1-070](#) [M55629/1-079](#) [M55629/1-084](#) [M55629/1-085](#) [M55629/1-101](#) [M55629/1-109](#) [M55629/11-102](#) [M55629/1-120](#) [M55629/12-045](#) [M55629/12-046](#) [M55629/1-330](#) [M55629/1-366](#) [M55629/1-387](#) [M55629/1-401](#) [M55629/1-450](#) [M55629/2-022](#) [M55629/2-030](#) [M55629/2-072](#) [M55629/2-082](#) [M55629/2-099](#) [M55629/20-LL](#) [M55629/2-101](#) [M55629/2-102](#) [M55629/21-BM-BM](#) [M55629/21-HM-HM](#) [M55629/21-NS-NS](#) [M55629/22-NR-NR-NR](#) [M55629/22-RS-RS-RS](#) [M55629/2-347](#)