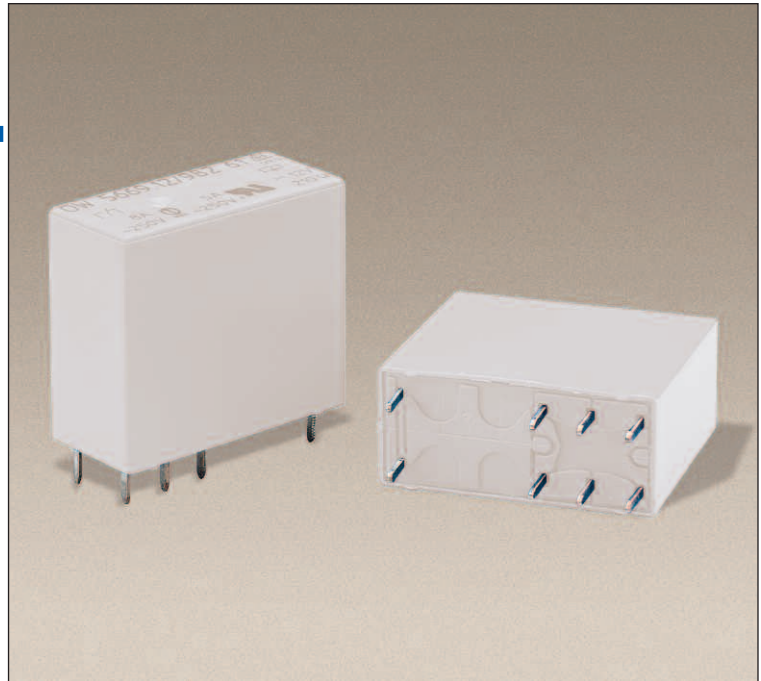


Safety Relay OA/OW 5669

Features

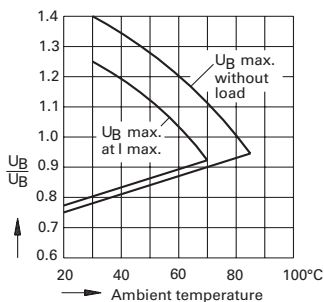
- n 2 output contacts
- n International approvals:
TÜV, CSA, UL, cUL
- n Quality control check for each safety relay
- n Forced-guided contacts, all gold flash plated
- n Contact Gap > 0.5 mm throughout life of relay
- n Various contact materials,
mixed contact material optional
- n High coil voltage range
- n High breakdown Voltage: contact/coil > 4 KV
- n High Creeping Distance: contact/coil > 8 mm
- n Protection Rating
OA Version: IP 40, flow solder proof
OW Version: IP 67, washable
- n Custom design available,
-coil voltage -coil resistance,
-contact pressure -operate/release time



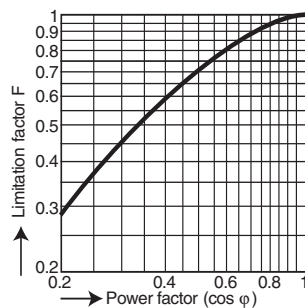
Technical Data

- n **Nominal Coil Voltage**5, 6, 12, 20, 24, 48, 60, 110, DC
- n **Coil Power Dissipation**0.7 W
- n **Max. Switching Voltage**250V DC, 400V AC
- n **Max. Switching Current**8 A (2 x 5A simultaneous)
- n **Max. Switching Power – DC**
.....200W (2 x 160W simultaneous)
- n **Max. Switching Power – AC**
.....2000VA (2 x 1250VA simultaneous)
- n **Contact Switching Rate**10 operations per second
- n **Relay Operate Time**≤15 ms
- n **Relay Release Time**≤12 ms
- n **Operation Vibration**0.35 mm Ampl. max
.....@ 10...55Hz, 5g max
- n **Contact Arrangements**1NO/1NC, 2CO, 2NO, 2NC
- n **Contact Material**AgNi10+0.2µmAu Standard
.....AgSnO₂+0.2µmAu, AgNi0.15+5µmAu Optional
- n **Mechanical Life**50x10⁶ operation cycles
- n **Electrical Life**AgSnO₂ >2x10⁵, AgNi10 >10⁵
.....operation cycles @ 230V AC, 6A, cos φ=1
- n **Ambient Temperature**-20...+85°C
- n **Cover Material**Polyamide 6
- n **Weight**15 g
- n More detailed data upon request

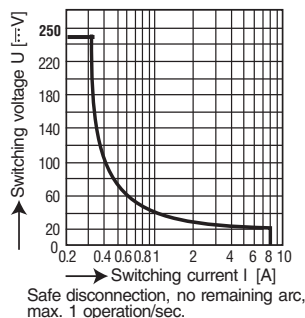
Diagrams



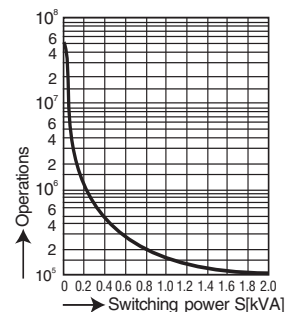
Relay operation voltage vs. ambient temperature



Limitation factor for inductive loads
Operations =
Operations (ohmic) x limitation factor F



Maximum switching power curve



Mechanical life

Safety Relay 5669 Data

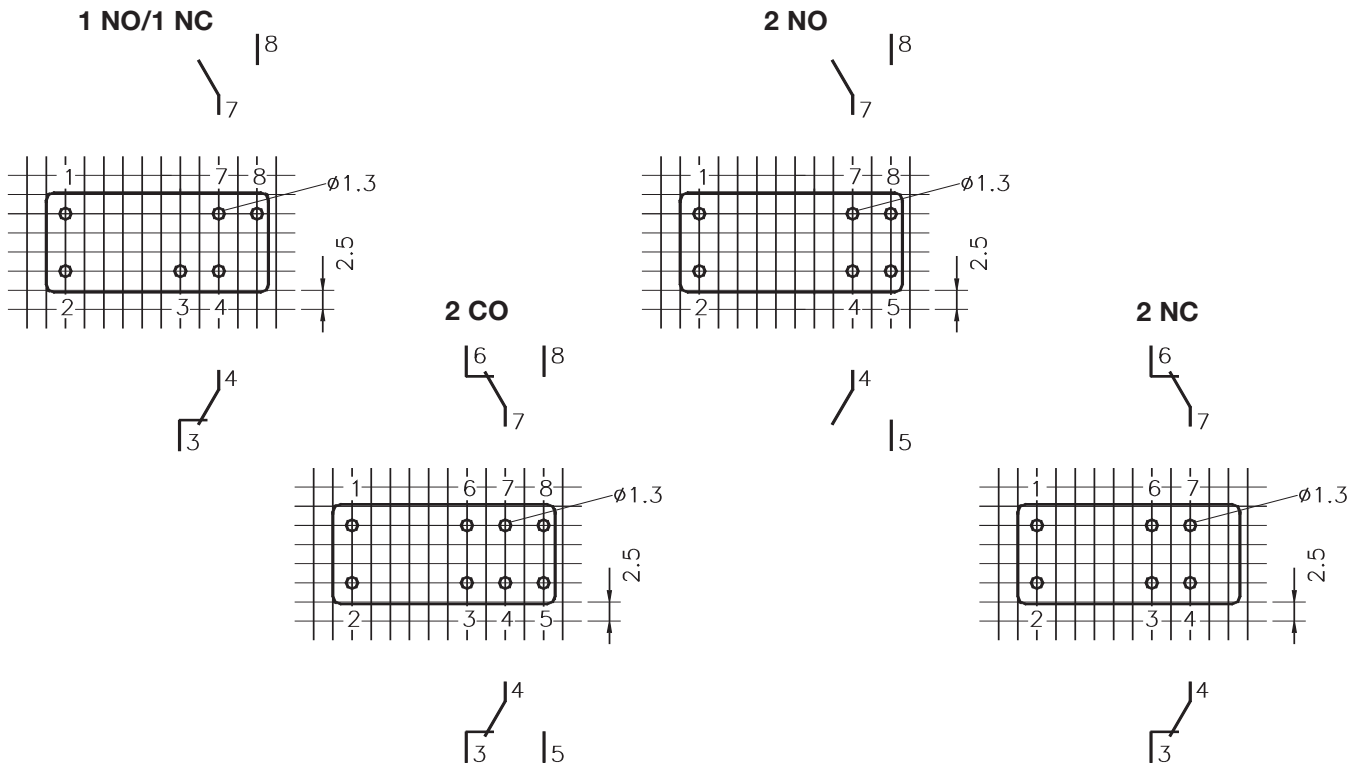
Relay Data			Ordering Information			
Rated Voltage	Voltage Range	Coil Resistance	1 NO/1 NC Type	2 CO Type	2 NO Type	2 NC Type
5V	4.0 - 8.0V	36 Ω	56.O□69.0511□	56.O□69.0500□	56.O□69.0520□	56.O□69.0502□
6V	4.8 - 9.6V	50 Ω	56.O□69.0611□	56.O□69.0600□	56.O□69.0620□	56.O□69.0602□
12V	9.6 - 19.2V	210 Ω	56.O□69.1211□	56.O□69.1200□	56.O□69.1220□	56.O□69.1202□
20V	16.0 - 32.0V	580 Ω	56.O□69.2011□	56.O□69.2000□	56.O□69.2020□	56.O□69.2002□
24V	19.2 - 38.4V	820 Ω	56.O□69.2411□	56.O□69.2400□	56.O□69.2420□	56.O□69.2402□
48V	38.4 - 76.8V	3200 Ω	56.O□69.4811□	56.O□69.4800□	56.O□69.4820□	56.O□69.4802□
60V	48.0 - 96.0V	5200 Ω	56.O□69.6011□	56.O□69.6000□	56.O□69.6020□	56.O□69.6002□
110V	88.0 - 176.0V	18000 Ω	56.O□69.1111□	56.O□69.1100□	56.O□69.1120□	56.O□69.1102□

Protection Class, Example:
A IP 40, Flow Solder Proof
W IP 67, Washable

Contact Material, Example:
C AgSnO₂+2μmAu
N AgNi10+.2μmAu
S AgNi0.15+5μmAu

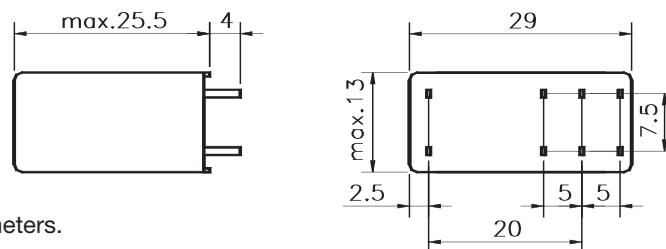
Footprints

(Note: Shown at their actual size.)



Dimensions

(Note: Shown at their actual size.)



Note: All dimensions are shown in millimeters.
 To convert to inches, divide by 25.4.

X-ON Electronics

Largest Supplier of Electrical and Electronic Components

Click to view similar products for [Safety Relays](#) category:

Click to view products by [Altech](#) manufacturer:

Other Similar products are found below :

[7-1618103-5](#) [1351-1X](#) [1618082-4](#) [1618111-1](#) [C200HDA003](#) [C200HMR432](#) [C200HMR832](#) [C200HMR833](#) [C28PEDRA](#) [20-050-36X](#)
[C500ETL01](#) [C500OD415CN](#) [2-1618068-0](#) [9-1618103-2](#) [SP10-ETL01](#) [22-060X](#) [C200HNC112](#) [C200HOD214](#) [C500CN812N](#) [1100X](#) [1100-42X](#) [V23050A1012A551](#) [6-1618082-4](#) [7-1618103-6](#) [WTD-101X](#) [SP16DRD](#) [SP16DRA](#) [C500-CE243](#) [C500-IDS02-V1](#) [607.5111.020](#)
[DOLD 48173](#) [774316](#) [600PSR-165/300-CU](#) [J73KN-AM-22](#) [G7SA-4A2B DC12](#) [SRB301LC/B 24V](#) [SRB301MA-24V](#) [SRB301MC-ST-24V](#)
[BP34 - 101057553](#) [2TLA010033R3000](#) [2TLA010033R2000](#) [2TLA010033R0000](#) [2TLA010028R1000](#) [2TLA010017R0100](#)
[2TLA010026R0400](#) [SCR 2-W22-2.5](#) [7S.32.8.230.5110](#) [7S.34.9.110.4220](#) [3100.0110I](#) [XPSUDN33AP](#)