

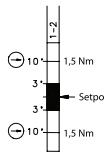
# Safety Hinged Switches



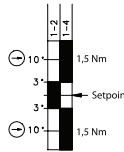
## SHS Series

### Switching diagram

1 NC contact (Type B)



1 Changeover contact (Type C)



Setting point freely selectable in range from 0°... 225°

Tolerances:

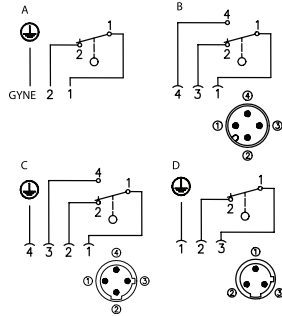
Switching angle (opening) +2.0°/-1.5°

Positive opening torque 10 %

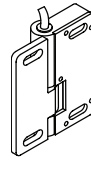
Positive opening angle +0.5°/-3°

Switching angle hysteresis (closing of normally-closed contact -1.0°) from typical hinge switch-off point

### Connection drawing

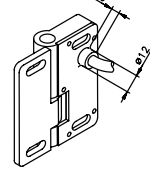


### Connection variant 1



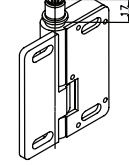
Cable, PVC

### Connection variant 2



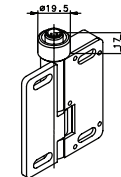
Cable, PVC

### Connection variant 3



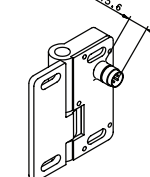
Connector M12 x 1, metal thread

### Connection variant 4



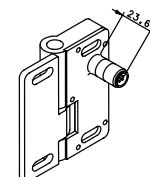
Connector M12 x 1, metal thread

### Connection variant 5



Connector M12 x 1

### Connection variant 6



Connector M12 x 1

### Product selection

Article number	Designation	Switching contact	Max. switching voltage	Type of voltage	Type of connection and direction	Required cable coupling/type	Remarks
601.9261.011	SHS-A1Z-KA 5	1NC	230 V	AC/DC	Cable		BG approval
601.9261.014	SHS-A1Z-KR 5	1NC	230 V	AC/DC	Cable		BG approval
601.9261.017	SHS-A1Z-SA-BG	1NC	230 V	AC/DC	M12	A	BG approval
6019261018	SHS-A1Z-SR-BG	1NC	230 V	AC/DC	M12	A	BG approval
601.9261.009	SHS-A1Z-SA	1 Changeover contact	230 V	AC/DC	M12	C	
601.9261.010	SHS-A1Z-SR	1 Changeover contact	60 V	DC	M12	B	
601.9261.015	SHS-A1Z-SA	1 Changeover contact	60 V	DC	M12	B	
601.9261.016	SHS-A1Z-SR	1 Changeover contact	230 V	AC/DC	M12	C	
6019291013	SHS-OZ						Blank hinge

### Technical data

Electrical data	
Rated insulation voltage	U <sub>i</sub> 250 V
Rated surge voltage strength	U <sub>imp</sub> 2.5 kV
Thermal current	I <sub>the</sub> 3 A
Rated operating voltage	U <sub>c</sub> 230 V AC; 60 V DC
Utilization category	AC-15, 230 V AC/1.5 A;
Positive opening	p conforming to IEC/EN 60947-5-1, Addendum K
Short-circuit protection	Fuse 4 A gL/gG
Mechanical data	
Switch	GD-Zn
Ambient temperature	-25°C to +70°C (Connection cable installed)
Mechanical service life	10 <sup>9</sup> switching cycles
B10d	2 mill.
Switching frequency	max. 1200 switching cycles/hour
Mounting	4x M6 screws DIN 7984 or DIN 6912
Type of connection	Fixed connection cable, 3 x 0.5 mm <sup>2</sup> x 5 m (AWG20), minimum bending radius = 25 mm
Weight	approx. 0.7 kg (cable variant) approx. 0.4 kg (connector and blank hinge variant)
Installation position	Any
Protection class	IP67 as per IEC/EN 60529
Switching angle	± 3° from setting point
Positive opening angle	± 10° from setting point
Positive opening torque	1.5 Nm
Mechanical load	F <sub>R1</sub> = max. 1000 N, F <sub>R2</sub> = max. 500 N, F <sub>A</sub> = max. 750 N
Standards	
VDE 0660 T100, DIN EN 60947-1, IEC 60947-1 VDE 0660 T200, DIN EN 60947-5-1, IEC 60947-5-1	

## X-ON Electronics

Largest Supplier of Electrical and Electronic Components

*Click to view similar products for [Control Switches](#) category:*

*Click to view products by [Altech](#) manufacturer:*

Other Similar products are found below :

[80887-99](#) [80932-99](#) [86855-00](#) [88814-30](#) [89721-12](#) [89804-08](#) [EX0011-1](#) [SSN](#) [RL01801](#) [50051857-17](#) [50099156-001-05](#) [51.155R-15200](#)  
[50058920-26](#) [KMK-PA](#) [RAL9005](#) [M16](#) [ACCU-SC/L-3000](#) [PORTAPRO](#) [CFPS-73-48M](#) [WEL.PT-O6](#) [WEL.PT-L8](#) [WEL.PT-K7](#) [WEL.PT-](#)  
[H7](#) [WEL.PT-E9](#) [WEL.PT-D7](#) [WEL.PT-B7](#) [WEL.PT-AA9](#) [WEL.PT-AA8](#) [WEL.PT-A8](#) [WEL.LT-F](#) [WEL.LT-4](#) [WEL.LT-1LX](#) [WEL.LT-1L](#)  
[WEL.ET-BB](#) [WEL.CT5B7](#) [WEL.51361699](#) [RGFRA1903041A1T](#) [PLC-60/75](#) [PLC-30/40](#) [PLC-24/30](#) [PLC-40/55](#) [LOC-MIKSER2](#) [8522808](#)  
[CC-100N](#) [V8Y-11Z-Y](#) [V8Y-11Z-R](#) [V8Y-11Z-O](#) [V8Y-11Z-24R](#) [V8Y-11Z-24O](#) [V8Y-11Z-230B](#) [V8Y-11-230W](#) [V8Y-11-230O](#)