

Flat Head Sealing

Material:

- EPDM, black

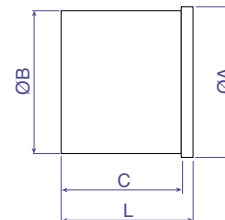
Features:

- For sealing cable gland entries when cables are not being installed.
- Insert into cable gland and tighten gland to seal.



| Suitable for | ØA mm | ØB mm | C mm | L mm | Cat. No. | Std. Pk. |
|-------------------------------|-------|-------|------|------|----------------|----------|
| PG 9, PG 11, M 16, NPT 3/8 | 11.0 | 8.0 | 17.0 | 20.0 | 7217701 | 100 |
| PG 13.5, PG 16, M 20, NPT 1/2 | 15.0 | 12.0 | 18.0 | 21.0 | 7217702 | 100 |
| PG 21, M 25, NPT 3/4 | 18.0 | 15.0 | 19.0 | 22.0 | 7217703 | 100 |

| Temperature Range |
|--------------------------------|
| -40 to 130°C (-40 to 266°F) |



Multi-Conductor Sealing

Material:

- Neoprene, black

Features:

- Standard Straight-Through Polyamide Series
- Delivered separate, replaces sealing sleeve provided with gland

| Suitable for | Hole Quantity | Hole Ø mm | ØA mm | B mm | Cat. No. | Std. Pk. |
|--------------|---------------|-----------|-------|------|----------|----------|
|--------------|---------------|-----------|-------|------|----------|----------|

Multi-Conductor Seal

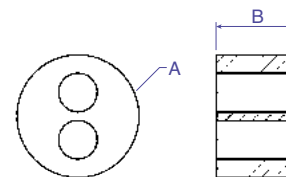
| | | | | | | |
|-------------|---|-----|------|------|----------------|-----|
| PG 11/ M 16 | 2 | 4.0 | 13.0 | 8.0 | 8114200 | 100 |
| PG 16/ M 20 | 2 | 5.0 | 17.0 | 10.0 | 8114203 | 100 |
| PG 16/ M 20 | 2 | 6.0 | 17.0 | 10.0 | 8114201 | 100 |
| PG 16/ M 20 | 4 | 5.0 | 17.0 | 10.0 | 8114202 | 100 |
| PG 21/ M 25 | 2 | 6.0 | 22.5 | 11.5 | 8114204 | 100 |
| PG 21/ M 25 | 2 | 8.0 | 22.5 | 11.5 | 8114208 | 100 |
| PG 21/ M 25 | 3 | 7.0 | 22.5 | 11.5 | 8114205 | 100 |
| PG 21/ M 25 | 4 | 6.5 | 22.5 | 11.5 | 8114206 | 100 |
| PG 21/ M 25 | 6 | 4.0 | 22.5 | 11.5 | 8114207 | 100 |
| PG 29/ M 32 | 4 | 6.0 | 30.5 | 13.0 | 8114212 | 100 |
| PG 29/ M 32 | 4 | 8.0 | 30.5 | 13.0 | 8114209 | 100 |
| PG 29/ M 32 | 6 | 6.0 | 30.5 | 13.0 | 8114210 | 100 |
| PG 29/ M 32 | 8 | 4.0 | 30.5 | 13.0 | 8114211 | 100 |

Solid Sealing without holes

| | | | | | | |
|-------------|---|---|------|------|----------------|-----|
| PG 11/ M 16 | — | — | 13.0 | 8.0 | 8114250 | 100 |
| PG 16/ M 20 | — | — | 17.0 | 10.0 | 8114251 | 100 |
| PG 21/ M 25 | — | — | 22.5 | 11.5 | 8114252 | 100 |
| PG 29/ M 32 | — | — | 30.5 | 13.0 | 8114253 | 100 |



| Temperature Range |
|--------------------------------|
| -25 to 100°C (-13 to 212°F) |



This is one of our most popular series and is usually kept in stock.

X-ON Electronics

Largest Supplier of Electrical and Electronic Components

Click to view similar products for [Cable Glands, Strain Reliefs & Cord Grips](#) category:

Click to view products by [Altech](#) manufacturer:

Other Similar products are found below :

[1218](#) [1300980012](#) [1300980105](#) [DBZM-6828](#) [1498](#) [915](#) [300623](#) [5632NM](#) [1124](#) [1151](#) [561-MP6P4WH](#) [5534M](#) [9000005073](#) [52104486](#)
[5315817](#) [N16 025 0112 1](#) [N16 020 0112 1](#) [M6106](#) [7422](#) [NG-9516 Gasket](#) [N16 016 0112 1](#) [NG-9514 Gasket](#) [52006151](#) [2704](#) [1.097.2012.50](#)
[1.152.1300.01](#) [1.152.2000.50](#) [1.152.2100.01](#) [1.152.4000.50](#) [1.209.1218.70](#) [1.209.6400.71](#) [1.609.1100.01](#) [1.609.2900.15](#) [1.609.3200.52](#)
[1.609.5000.51](#) [1.609.6300.50](#) [1.676.2500.50](#) [53112705](#) [53112715](#) [53112735](#) [53119073](#) [54115405](#) [52004120](#) [52001894](#) [53018160](#)
[APGPG36BA](#) [1300990004](#) [1.033.0913.01](#) [1.033.1116.01](#) [1.033.2936.01](#)