

Flat Head Sealing

Material:

- EPDM, black

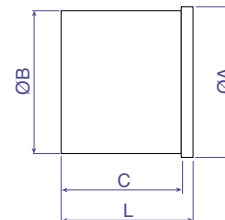
Features:

- For sealing cable gland entries when cables are not being installed.
- Insert into cable gland and tighten gland to seal.



Suitable for	ØA mm	ØB mm	C mm	L mm	Cat. No.	Std. Pk.
PG 9, PG 11, M 16, NPT 3/8	11.0	8.0	17.0	20.0	7217701	100
PG 13.5, PG 16, M 20, NPT 1/2	15.0	12.0	18.0	21.0	7217702	100
PG 21, M 25, NPT 3/4	18.0	15.0	19.0	22.0	7217703	100

Temperature Range
-40 to 130°C (-40 to 266°F)



Multi-Conductor Sealing

Material:

- Neoprene, black

Features:

- Standard Straight-Through Polyamide Series
- Delivered separate, replaces sealing sleeve provided with gland

Suitable for	Hole Quantity	Hole Ø mm	ØA mm	B mm	Cat. No.	Std. Pk.
--------------	---------------	-----------	-------	------	----------	----------

Multi-Conductor Seal

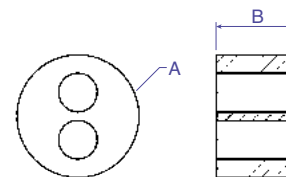
PG 11/ M 16	2	4.0	13.0	8.0	8114200	100
PG 16/ M 20	2	5.0	17.0	10.0	8114203	100
PG 16/ M 20	2	6.0	17.0	10.0	8114201	100
PG 16/ M 20	4	5.0	17.0	10.0	8114202	100
PG 21/ M 25	2	6.0	22.5	11.5	8114204	100
PG 21/ M 25	2	8.0	22.5	11.5	8114208	100
PG 21/ M 25	3	7.0	22.5	11.5	8114205	100
PG 21/ M 25	4	6.5	22.5	11.5	8114206	100
PG 21/ M 25	6	4.0	22.5	11.5	8114207	100
PG 29/ M 32	4	6.0	30.5	13.0	8114212	100
PG 29/ M 32	4	8.0	30.5	13.0	8114209	100
PG 29/ M 32	6	6.0	30.5	13.0	8114210	100
PG 29/ M 32	8	4.0	30.5	13.0	8114211	100

Solid Sealing without holes

PG 11/ M 16	—	—	13.0	8.0	8114250	100
PG 16/ M 20	—	—	17.0	10.0	8114251	100
PG 21/ M 25	—	—	22.5	11.5	8114252	100
PG 29/ M 32	—	—	30.5	13.0	8114253	100



Temperature Range
-25 to 100°C (-13 to 212°F)



This is one of our most popular series and is usually kept in stock.

X-ON Electronics

Largest Supplier of Electrical and Electronic Components

Click to view similar products for [Conduit Fittings & Accessories](#) category:

Click to view products by [Altech](#) manufacturer:

Other Similar products are found below :

[M3231GAB](#) [M3231GAC](#) [M3231GAE](#) [M3231GL](#) [M3231GN](#) [M3231GT](#) [VC-937-16/RED](#) [VC-562-16/RED](#) [VC-1125-16/RED](#) [DM0240-1/2A](#) [3408B](#) [G6002](#) [M4340GAE](#) [C2016-P](#) [C2012-P](#) [3407B](#) [1660-P](#) [561-87BG11BLK](#) [561-75BG11B](#) [2276](#) [2663-P](#) [3405B](#) [C2070-P](#) [3582V](#) [4975](#) [2644-P](#) [2955](#) [M50](#) [2404-P](#) [2291](#) [2133-P](#) [3048F](#) [VC12516](#) [RC156-0500](#) [DM0523-1/2A](#) [1035A](#) [DMS0250-1A](#) [DMS0313-1A](#) [1040A](#) [1050A](#) [R1/8A](#) [DMPC0490-1/2A](#) [DMPC0521-1/2A](#) [DMPC0552-1/2A](#) [1070A](#) [R1/2A](#) [E1-7/8B](#) [061A](#) [R3/4A](#) [A2-1/2A](#) [A2-1/4A](#)