

K70 Enclosures

- 6-32 Terminals
- Temperature Range: to 60°C (140°F)
- Housing Material: Polycarbonate and ABS
- Standard Color: Light Gray



K7022.5A



K7045C



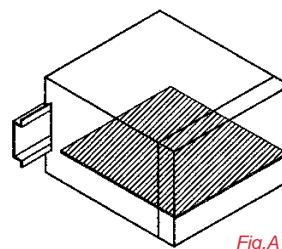
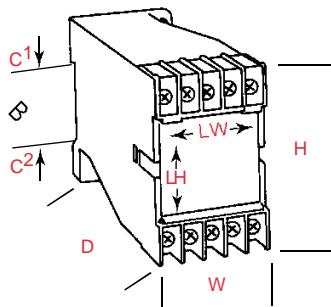
K7022.5B



K7022.5C

ENCLOSURE TYPE	K7022.5A	K7045C	K7022.5B	K7022.5C
Ratings				
Voltage/Current*	300V/25A	300V/25A	300V/25A	300V/25A
Max. Wire Size—AWG**	12 AWG	12 AWG	12 AWG	12 AWG
Number of Terminals	8	10	12	12
Max. No. of Printed Circuit Boards per Mounting Position				
Horizontal (parallel) (Fig. A)				
Vertical (perpendicular) (Fig. B)	2	10	2	2
Vertical Behind Cover (parallel) (Fig. C)				
Terminal Type	Pressure Plate	●	●	●
Terminal-to-Board Connections				
Fixed	Wire Jumper	●	●	●
	Solder Tab			
	Fast On	●	●	
	Machine Solderable Pins		●	●
Pluggable	Card Edge			
Enclosure Mounting	35mm DIN Rail (7.5mm Deep)	●	●	●
	Panel, Corner Screws		●	
	Panel, Pull Out Tabs ¹	●	●	●
ORDERING INFORMATION	Cat. No.	Cat. No.	Cat. No.	Cat. No.
K70 Enclosure, without terminal covers	90.001	90.010	90.020	90.030
K70 Enclosure, with terminal covers ²				
Accessories				
Terminal Covers ² (if two Cat. Nos. appear, order one of each)	90.001.1 / 90.001.2	90.010.1	90.020.1 / 90.020.2	90.030.1
DIN Rail 35x 7.5mm, 1m (3'-3") lengths	2094.0/1m	2094.0/1m	2094.0/1m	2094.0/1m
Extra Panel Mount Tab ¹	93.001.2	93.001.2	93.001.2	93.001.2

Data Sheet No.	K7022.5A	K7045C	K7022.5B	K7022.5C
Approximate Dimensions mm (in.)				
Enclosure				
H	75.0 (2.95)	75.0 (2.95)	75.0 (2.95)	75.0 (2.95)
W	22.5 (.89)	45.0 (1.77)	22.5 (.89)	22.5 (.89)
D	97.0 (3.82)	112.0 (4.41)	97.0 (3.82)	97.0 (3.82)
C ¹	38.0 (1.50)	35.0 (1.38)	38.0 (1.50)	36.5 (1.44)
C ²	38.0 (1.50)	35.0 (1.38)	38.0 (1.50)	38.0 (1.50)
Label Area				
LH	21.0 (.83)	40.0 (1.57)	21.0 (.83)	21.5 (.85)
LW	22.0 (.87)	35.0 (1.38)	22.0 (.87)	30.0 (1.18)
Set Back	.4	.4	.4	.0



* Voltage rating can be increased, please consult Altech.
 ** 1 or 2 wires can be terminated with Pressure Plate terminals.

¹ One tab is supplied with each enclosure (except K7022.5C which has two tabs). Additional tabs are available. Refer to Data Sheet for maximum number of tabs.
² K7045D2 has factory equipped terminal covers.



K7055	K7075P	K7045D1	K7045D2	K70100A	K70100P	K70150P
300V/25A	300V/25A	300V/25A	300V/25A	300V/25A	300V/25A	300V/25A
12 AWG	12 AWG	12 AWG	12 AWG	12 AWG	12 AWG	12 AWG
12	16	20	20	20	20	32
	6			6	6	4
5	7	10	10	4	4	8
	1				1	1
●	●	●	●	●	●	●
●	●	●	●	●	●	●
	●	●	●	●		
	●				●	●
●	●	●	●	●	●	●
●	●	●	●	●	●	●
●	●	●	●	●	●	●
Cat. No.	Cat. No.	Cat. No.	Cat. No.	Cat. No.	Cat. No.	Cat. No.
90.040	90.050	90.060	90.070	90.080	90.090	90.100
90.040.1	90.050.1	90.060.1		90.080.1	90.090.1	90.100.1
2094.0/1m	2094.0/1m	2094.0/1m	2094.0/1m	2094.01/m	2094.0/1m	2094.0/1m
93.001.2	93.001.2	93.001.2	93.001.2	93.001.2	93.001.2	93.001.2
K7055	K7075P	K7045D1	K7045D2	K70100A	K70100P	K70150P
73.0 (2.87)	73.0 (2.87)	74.0 (2.91)	77.0 (3.03)	73.0 (2.87)	74.0 (2.91)	73.0 (2.87)
55.0 (2.17)	75.0 (2.95)	45.0 (1.77)	45.0 (1.77)	100.0 (3.94)	100.0 (3.94)	150.0 (5.91)
114.0 (4.49)	114.0 (4.49)	124.0 (4.88)	128.0 (5.04)	114.0 (4.49)	114.0 (4.49)	113.0 (4.45)
35.0 (1.38)	35.0 (1.38)	35.0 (1.38)	35.0 (1.38)	35.0 (1.38)	35.0 (1.38)	35.0 (1.38)
35.0 (1.38)	35.0 (1.38)	35.0 (1.38)	35.0 (1.38)	35.0 (1.38)	35.0 (1.38)	35.0 (1.38)
48.0 (1.89)	68.0 (2.68)	43.5 (1.71)	43.5 (1.71)	95.0 (3.74)	95.0 (3.74)	143.0 (5.63)
36.0 (1.42)	36.0 (1.42)	18.5 (.73)	18.5 (.73)	35.5 (1.40)	35.5 (1.40)	36.0 (1.42)
.4	.4	.4	.4	.4	.4	.4

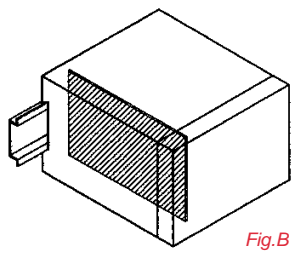


Fig. B

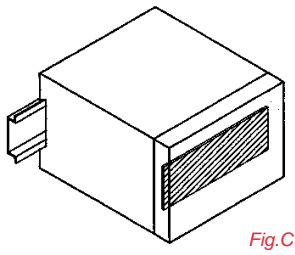


Fig. C

KO4700 Enclosures Small to Medium Size

- 8-30 Terminals
- Temperature Range: to 110°C (230°F)
- Selection of Cover Designs
- Housing Shell Material: Polycarbonate
- Cover Material: Glassfilled Polycarbonate
- Standard Color: Black Housing with Tan Cover



KO4762



KO4763A

ENCLOSURE TYPE		KO4712	KO4762	KO4714P	KO4763A
Ratings					
Voltage/Current*		300V/25A	300V/25A	300V/25A	300V/25A
Max. Wire Size—AWG**		12 AWG	12 AWG	12 AWG	12 AWG
Number of Terminals		8	10	14	16
Max. No. of Printed Circuit Boards per Mounting Position					
Horizontal (parallel) (Fig. A)		2		5	2
Vertical (perpendicular) (Fig. B)		2	2		2
Vertical Behind Cover (parallel) ¹ (Fig. C)		1		1	1
Terminal Type					
Pressure Plate			●	●	
Cage Clamp		●			●
Terminal-to-Board Connections					
Fixed					
Wire Jumper			●	●	
Solder Tab		●		●	
Fast On			●		
Machine Solderable Pins		●			●
Pluggable					
Card Edge				●	
Enclosure Mounting					
35mm DIN Rail (7.5mm Deep)		●	●	●	●
35mm DIN Rail (15mm Deep)		●	●	●	●
Panel, Pull Out Tabs ²					
ORDERING INFORMATION		Cat. No.	Cat. No.	Cat. No.	Cat. No.
Enclosure		90.201	90.230	90.260	90.290
Enclosure, with removable cover panel, tan					90.291
Enclosure, with removable cover panel, clear					90.292
Accessories					
Terminal Cover Strips					
B2.9 x 6.5 (DIN 7981) Screws for Mounting Printed Circuit Board (4)					
35 x 7.5mm DIN Rail, 1m (3'-3") lengths		2094.0/1m	2094.0/1m	2094.0/1m	2094.0/1m
35 x 15mm DIN Rail, 1m (3'-3") lengths		2095.0/1m	2095.0/1m	2095.0/1m	2095.0/1m
Extra Panel Mount Tab ²		93.001.2	93.001.2	93.001.2	93.001.2
Data Sheet No.		KO4712	KO4762	KO4714P	KO4763A
Approximate Dimensions mm (in.)					
Enclosure					
H			74.0 (2.91)		74.0 (2.91)
W			45.0 (1.77)		45.0 (1.77)
D			119.0(4.69)		119.0 (4.69)
C ¹		37.0 (1.46)	37.0 (1.46)	37.0 (1.46)	37.0 (1.46)
C ²		37.0 (1.46)	37.0 (1.46)	37.0 (1.46)	37.0 (1.46)
Label Area					
LH		42.0 (1.65)	42.0 (1.65)	33.0 (1.30)	42.0 (1.65)
LW		21.0 (.83)	42.0 (1.65)	73.0 (2.87)	43.0 (1.69)
Set Back		.2	.2	.2	.2

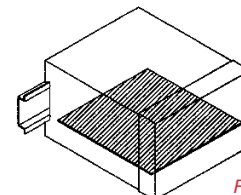
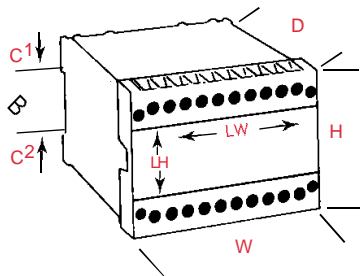


Fig. A

* Voltage rating can be increased, please consult Altech.

** 1 or 2 wires can be terminated with Pressure Plate terminals.

¹ This board position is possible in enclosures that have covers with a removable cover panel (Fig. C).

² One tab is supplied with each enclosure, order additional tabs separately. Refer to Data Sheet for maximum number of tabs.

³ Enclosure in development, please consult Altech for dimensions.



K04763P

K04718P

K04713A

K04713P

K04717A

K04717P

KO4763P	KO4718P	KO4713A	KO4713P	KO4717A	KO4717P
300V/25A	300V/25A	300V/25A	300V/25A	300V/25A	300V/25A
12 AWG	12 AWG	12 AWG	12 AWG	12 AWG	12 AWG
16	20	22	22	30	30
2	5	5	5	5	5
1	1	1	1	1	1
●	●	●	●	●	●
	●				
	●				
		●		●	
●	●		●		●
●	●	●	●	●	●
●	●	●	●	●	●
	●	●	●	●	●
Cat. No.	Cat. No.	Cat. No.	Cat. No.	Cat. No.	Cat. No.
90.320	90.350	90.380	90.410	90.440	90.470
90.321	90.351	90.381	980.411	90.441	90.471
90.322	90.352	90.382	90.412	90.442	90.472
	93.001.1	93.001.1	93.001.1	93.001.1	93.001.1
2094.0/1m	2094.0/1m	2094.0/1m	2094.0/1m	2094.0/1m	2094.0/1m
2095.0/1m	2095.0/1m	2095.0/1m	2095.0/1m	2095.0/1m	2095.0/1m
93.001.2	93.001.2	93.001.2	93.001.2	93.001.2	93.001.2
KO4763P	KO4718P	KO4713A	KO4713P	KO4717A	KO4717P
74.0 (2.91)	74.0 (2.91)	74.0 (2.91)	74.0 (2.91)	74.0 (2.91)	74.0 (2.91)
45.0 (1.77)	100.0 (3.94)	75.0 (2.95)	75.0 (2.95)	100.0 (3.94)	100.0 (3.94)
119.0 (4.69)	19.0 (4.69)	119.0 (4.69)	119.0 (4.69)	119.0 (4.69)	119.0 (4.69)
37.0 (1.46)	37.0 (1.46)	37.0 (1.46)	37.0 (1.46)	37.0 (1.46)	37.0 (1.46)
37.0 (1.46)	37.0 (1.46)	37.0 (1.46)	37.0 (1.46)	37.0 (1.46)	37.0 (1.46)
42.0 (1.65)	33.0 (1.30)	42.0 (1.65)	33.0 (1.30)	42.0 (1.65)	33.0 (1.30)
43.0 (1.69)	98.0 (3.86)	73.0 (2.87)	73.0 (2.87)	73.0 (2.87)	98.0 (3.86)
.2	.2	.2	.2	.2	.2

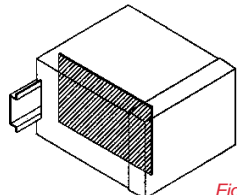


Fig. B

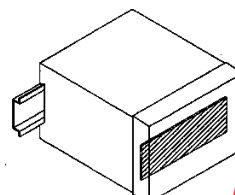
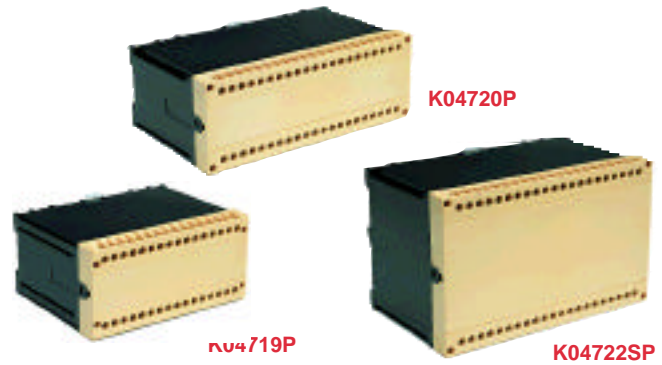


Fig. C

KO4700 Enclosures Medium to Large Size

- 32-132 Terminals
- Temperature Range: to 110°C (230°F)
- Selection of Cover Designs
- Housing Shell Material: Polycarbonate
- Cover Material: 10% Glassfilled Polycarbonate
- Standard Color: Black Housing with Tan Cover

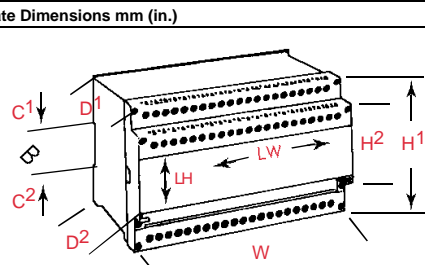


ENCLOSURE TYPE	KO4719P	KO4720P	KO4722SP	KO4716A
Ratings				
Voltage/Current*	300V/25A	300V/25A	300V/25A	300V/25A
Max. Wire Size—AWG**	12 AWG	12 AWG	12 AWG	12 AWG
Number of Terminals	32	42	42	50
Max. No. of Printed Circuit Boards per Mounting Position				
Horizontal (parallel) (Fig. A)	5	5	11	5
Vertical (perpendicular) (Fig. B)				
Vertical Behind Cover (parallel) ¹ (Fig. C)	1	1		1
Terminal Type				
Pressure Plate	●	●	●	
Cage Clamp				●
Terminal-to-Board Connections				
Fixed				
Wire Jumper	●	●	●	
Solder Tab	●	●	●	●
Fast On				
Machine Solderable Pins				●
Pluggable				
Card Edge	●	●	●	
Enclosure Mounting				
35mm DIN Rail (7.5mm Deep)	●	●	●	●
35mm DIN Rail (15mm Deep)	●	●	●	●
Panel, Pull Out Tabs ²	●	●	●	●

ORDERING INFORMATION	Cat. No.	Cat. No.	Cat. No.	Cat. No.
Enclosure	90.500	90.530	90.560	90.590
Enclosure, with removable cover panel, tan	90.501	90.531		90.591
Enclosure, with removable cover panel, clear	90.502	90.532		90.592

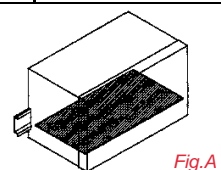
Accessories				
Terminal Cover Strips		90.530.1	90.560.1	
B2.9 x 6.5 (DIN 7981) Screws for Mounting Printed Circuit Board (4)	93.001.1	93.001.1		93.001.1
35 x 7.5mm DIN Rail, 1m (3'3") lengths	2094.0/1m	2094.0/1m	2094.0/1m	2094.0/1m
35 x 15mm DIN Rail, 1m (3'3") lengths	2095.0/1m	2095.0/1m	2095.0/1m	2095.0/1m
Extra Panel Mount Tab ²	93.001.2	93.001.2	93.001.2	93.001.2

Data Sheet No.	KO4719P	KO4720P	KO4722SP	KO4716A
Approximate Dimensions mm (in.)				



Enclosure				
H ¹ /H ²	71.0 (2.80)	73.0 (2.87)	122.0 (4.80)	³
W	152.0 (5.98)	200.0 (7.87)	200.0 (7.87)	³
D ¹ /D ²	118.0 (4.65)	118.0 (4.65)	118.0 (4.65)	³
C ¹	37.0 (1.46)	37.0 (1.46)	37.0 (1.46)	37.0 (1.46)
C ²	37.0 (1.46)	37.0 (1.46)	86.0 (3.39)	37.0 (1.46)
Label Area				
LH	33.0 (1.30)	33.0 (1.30)	83.0 (3.27)	42.0 (1.65)
LW	150.0 (5.91)	198.0 (7.80)	198.0 (7.80)	150.0 (5.91)
Set Back	.2	.2	.2	.2

* Voltage rating can be increased, please consult Altech.
 ** 1 or 2 wires can be terminated with Pressure Plate terminals.
¹ This board position is possible in enclosures that have covers with a removable cover panel (Fig. C).
² One tab is supplied with each enclosure, order additional tabs separately. Refer to Data Sheet for maximum number of tabs.
³ Enclosure in development, please consult Altech for dimensions.





KO4721P

KO4723SP

KO4722DP

KO4723DP

KO4716P	KO4721A	KO4721P	KO4723SP	KO4722DP	KO4723DP
300V/25A	300V/25A	300V/25A	300V/25A	300V/25A	300V/25A
12 AWG	12 AWG	12 AWG	12 AWG	12 AWG	12 AWG
50	66	66	66	84	132
5	5	5	11	11	11
1	1	1			
●	●	●	●	●	●
●	●	●	●	●	●
	●		●	●	●
●		●	●	●	●
●	●	●		●	
●	●	●	●	●	●
●	●	●	●	●	●
Cat. No.	Cat. No.	Cat. No.	Cat. No.	Cat. No.	Cat. No.
90.620	90.650	90.680	90.710	90.740	90.770
90.621	90.651	90.681			
90.622	90.652	90.682			
	90.650.1	90.680.1	90.710.1	90.740.1	90.770.1
93.001.1	93.001.1	93.001.1			
2094.0/1m	2094.0/1m	2094.0/1m	2094.0/1m	2094.0/1m	2094.0/1m
2095.0/1m	2095.0/1m	2095.0/1m	2095.0/1m	2095.0/1m	2095.0/1m
93.001.2	93.001.2	93.001.2	93.001.2	93.001.2	93.001.2
KO4716P	KO4721A	KO4721P	KO4723SP	KO4722DP	KO4723DP
3	3	72.0 (2.83)	123.0 (4.84)	82.0 (3.23) / 123.0 (4.84)	82.0 (3.23) / 123.0 (4.84)
3	3	200.0 (7.87)	200.0 (7.87)	200.0 (7.87)	200.0 (7.87)
3	3	118.0 (4.65)	118.0 (4.65)	118.0 (4.65) / 136.0 (5.35)	118.0 (4.65) / 136.0 (5.35)
37.0 (1.46)	37.0 (1.46)	37.0 (1.46)	37.0 (1.46)	37.0 (1.46)	37.0 (1.46)
37.0 (1.46)	37.0 (1.46)	37.0 (1.46)	86.0 (3.39)	86.0 (3.39)	86.0 (3.39)
33.0 (1.30)	42.0 (1.65)	33.0 (1.30)	83.0 (3.27)	42.0 (1.65)	42.0 (1.65)
150.0 (5.91)	198.0 (7.80)	198.0 (7.80)	198.0 (7.80)	198.0 (7.80)	198.0 (7.80)
.2	.2	.2	.2	.2	.2

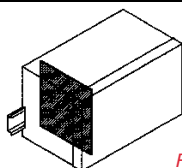


Fig.B

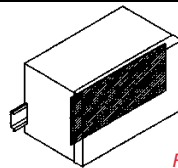


Fig.C



KO4071	KO4072	KO4074	KO4073	KO4077	KO4075	KO4076	KO4078	KO4079
300V/16A	300V/16A	300V/16A	300V/16A	300V/16A	300V/16A	300V/16A	300V/16A	300V/16A
12 AWG	12 AWG	12 AWG	12 AWG	12 AWG	12 AWG	12 AWG	12 AWG	12 AWG
4	6	6	8	8	9	12	12	16
		1	1	2	1	1	2	2
2	2	2	2	2	2	2	2	2
●	●	●	●	●	●	●	●	●
●	●	●	●	●	●	●	●	●
●	●	●	●	●	●	●	●	●
Cat. No.	Cat. No.	Cat. No.	Cat. No.	Cat. No.	Cat. No.	Cat. No.	Cat. No.	Cat. No.
91.001	91.010	91.020	91.030	91.040	91.050	91.060	91.070	91.080
91.002	91.011	91.021	91.031	91.041	91.051	91.061	91.071	91.081
93.001.3	93.001.3	93.001.3	93.001.3	93.001.3	93.001.3	93.001.3	93.001.3	93.001.3
2094.0/1m	2094.0/1m	2094.0/1m	2094.0/1m	2094.0/1m	2094.0/1m	2094.0/1m	2094.0/1m	2094.0/1m
KO4071	KO4072	KO4074	KO4073	KO4077	KO4075	KO4076	KO4078	KO4079
12.5 (.49)	12.5 (.49)	20.5 (.81)	12.5 (.49)	28.5 (1.12)	20.5 (.81)	20.5 (.81)	28.5 (1.12)	28.5 (1.12)
60.0 (2.36)	60.0 (2.36)	60.0 (2.36)	60.0 (2.36)	60.0 (2.36)	60.0 (2.36)	60.0 (2.36)	60.0 (2.36)	60.0 (2.36)
—	75.0 (2.95)	—	90.0 (3.54)	—	75.0 (2.95)	90.0 (3.54)	75.0 (2.95)	90.0 (3.54)
60.0 (2.36)	60.0 (2.36)	60.0 (2.36)	60.0 (2.36)	60.0 (2.36)	60.0 (2.36)	60.0 (2.36)	60.0 (2.36)	60.0 (2.36)
—	31.0 (1.22)	—	31.0 (1.22)	—	31.0 (1.22)	31.0 (1.22)	31.0 (1.22)	31.0 (1.22)
30.0 (1.18)	30.0 (1.18)	30.0 (1.18)	45.0 (1.77)	30.0 (1.18)	30.0 (1.18)	45.0 (1.77)	30.0 (1.18)	45.0 (1.77)
30.0 (1.18)	45.0 (1.22)	30.0 (1.18)	45.0 (1.77)	30.0 (1.18)	45.0 (1.77)	45.0 (1.77)	45.0 (1.77)	45.0 (1.77)
33.0 (1.30)	33.0 (1.30)	33.0 (1.30)	33.0 (1.30)	33.0 (1.30)	33.0 (1.30)	33.0 (1.30)	33.0 (1.30)	33.0 (1.30)
10.5 (.41)	10.5 (.41)	10.5 (.41)	19.0 (.75)	27.0 (1.06)	19.0 (.75)	19.0 (.75)	27.0 (1.06)	27.0 (1.06)

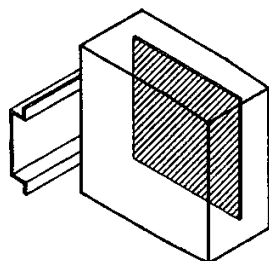


Fig. B

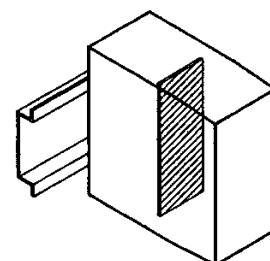


Fig. C

KU4000 Enclosures

- 8 to 64 Machine Solderable Terminals
- High Density Double Level Terminals
- Ample Interior Component Space
- Temperature Range: to 110°C (230°F)
- Housing Material: Polycarbonate
- Standard Color: Light Gray



KU4001B



KU4002C



KU4003C

ENCLOSURE TYPE	KU4001B	KU4002C	KU4002B	KU4003C
Ratings				
Voltage/Current*	300V/10A	300V/10A	300V/10A	300V/10A
Max. Wire Size–AWG**	12 AWG	12 AWG	12 AWG	12 AWG
Number of Terminals	8	16	16	32
Max. No. of Printed Circuit Boards per Mounting Position				
Horizontal (parallel) (Fig. A)		1		1
Vertical (perpendicular) (Fig. B)	1		2	
Base Mount (parallel) (Fig. C)		1	1	1
Terminal Type	Pressure Plate	●	●	●
Terminal-to-Board Connections				
Wire Jumper	●	●	●	●
Machine Solderable Pins, Straight		●		●
Machine Solderable Pins, Right Angle			●	
Enclosure Mounting	35mm DIN Rail (7.5mm Deep)	●	●	●
	Panel, Pull Out Tabs ¹	●	●	●
ORDERING INFORMATION	Cat. No.	Cat. No.	Cat. No.	Cat. No.
Enclosure, Equipped for Board Placement B	91.201		91.240	
Enclosure, Equipped for Board Placement C		91.220		91.260
Accessories				
Screw-Hole and Wire Entry Cover Plug Set	91.201.1	91.220.1	91.240.1	91.260.1
M2x3 Screws (DIN 89) for Mounting Printed Circuit Boards (4)	93.001.3	93.001.3	93.001.3	93.001.3
DIN Rail 35x 7.5mm, 1m (3'-3") lengths	2094.0/1m	2094.0/1m	2094.0/1m	2094.0/1m
Extra Panel Mount Tab ¹	93.001.2	93.001.2	93.001.2 ²	93.001.2

Data Sheet No.	KU4001B	KU4002C	KU4002B	KU4003C
----------------	---------	---------	---------	---------

Approximate Dimensions mm (in.)	Enclosure			
W	17.5 (.69)	35.3 (1.39)	35.3 (1.39)	71.7 (2.82)
H ¹	45.0 (1.77)	45.0 (1.77)	45.0 (1.77)	45.0 (1.77)
H ²	89.7 (3.53)	89.7 (3.53)	89.7 (3.53)	89.7 (3.53)
D ¹	47.4 (1.87)	47.4 (1.87)	47.4 (1.87)	47.8 (1.88)
D ²	57.7 (2.27)	58.0 (2.28)	58.0 (2.28)	58.6 (2.28)
C ¹	44.0 (1.73)	44.0 (1.73)	44.0 (1.73)	44.0 (1.73)
C ²	44.0 (1.73)	44.0 (1.73)	44.0 (1.73)	44.0 (1.73)
Label Area				
LH	38.0 (1.50)	39.0 (1.54)	39.0 (1.54)	39.0 (1.54)
LW	17.5 (.69)	32.7 (1.29)	32.7 (1.29)	69.0 (2.72)

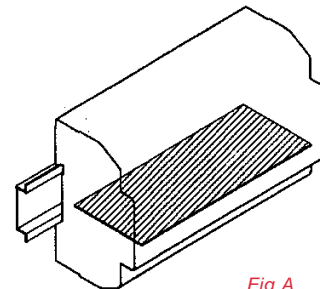
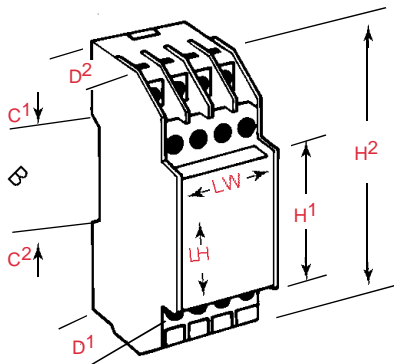


Fig.A

* Voltage rating can be increased, please consult Altech.
 ** 1 or 2 wires can be terminated with Pressure Plate terminals.
¹ One tab is supplied with each enclosure, order additional tabs separately. Refer to Data Sheet for maximum number of tabs.



KU4003B



KU40011C, KU4011B



KU40012C, KU4012B



KU40013C, KU4013B

KU4003B	KU4011C	KU4011B	KU4012C	KU4012B	KU4013C	KU4013B
300V/10 12 AWG	300V/10A 12 AWG	300V/10A 12 AWG	300V/10A 12 AWG	300V/10A 12 AWG	300V/10A 12 AWG	300V/10A 12 AWG
32	32	32	32	32	64	64
	1		1		1	2
4		8		4		8
1	1	1	1	1	1	1
●	●	●	●	●	●	●
●	●	●	●	●	●	●
●	●	●	●	●	●	●
●	●	●	●	●	●	●
●	●	●	●	●	●	●
Cat. No.	Cat. No.	Cat. No.	Cat. No.	Cat. No.	Cat. No.	Cat. No.
91.280	91.300	91.320	91.340	91.360	91.380	91.400
91.280.1	91.300.1	91.320.1	91.340.1	91.360.1	91.380.1	91.400.1
93.001.3	93.001.3	93.001.3	93.001.3	93.001.3	93.001.3	93.001.3
2094.0/1m	2094.0/1m	2094.0/1m	2094.0/1m	2094.0/1m	2094.0/1m	2094.0/1m
93.001.2	93.001.2	93.001.2	93.001.2	93.001.2	93.001.2	93.001.2
KU4003B	KU4011C	KU4011B	KU4012C	KU4012B	KU4013C	KU4013B
71.7 (2.82)	140.0 (5.51)	140.0 (5.51)	140.3 (5.52)	140.3 (5.52)	140.3 (5.52)	140.3 (5.52)
45.1 (1.78)	44.6 (1.76)	44.6 (1.76)	44.6 (1.76)	44.6 (1.76)	44.6 (1.76)	44.6 (1.76)
89.7 (3.53)	88.6 (3.49)	88.6 (3.49)	88.6 (3.49)	88.6 (3.49)	88.6 (3.49)	88.6 (3.49)
47.8 (1.88)	47.5 (1.87)	47.5 (1.87)	48.0 (1.89)	48.0 (1.89)	48.0 (1.89)	48.0 (1.89)
58.6 (2.31)	59.5 (2.34)	59.5 (2.34)	59.0 (2.32)	59.0 (2.32)	59.0 (2.32)	59.0 (2.32)
44.0 (1.73)	44.0 (1.73)	44.0 (1.73)	44.4 (1.73)	44.4 (1.73)	44.4 (1.73)	44.4 (1.73)
44.0 (1.73)	44.0 (1.73)	44.0 (1.73)	44.4 (1.73)	44.4 (1.73)	44.4 (1.73)	44.4 (1.73)
39.0 (1.54)	42.0 (1.65)	42.0 (1.65)	42.8 (1.69)	42.8 (1.69)	42.8 (1.69)	42.8 (1.69)
69.0 (2.72)	137.8 (5.43)	137.8 (5.43)	137.8 (5.43)	137.8 (5.43)	137.8 (5.43)	137.8 (5.43)

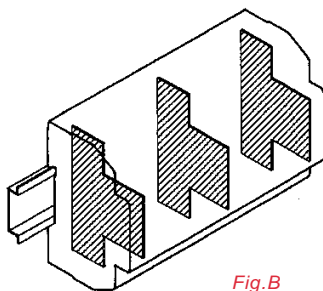


Fig. B

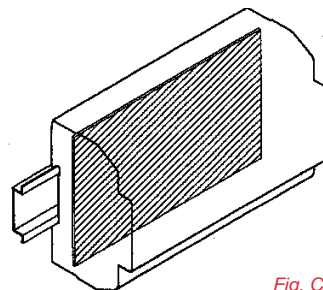


Fig. C

X-ON Electronics

Largest Supplier of Electrical and Electronic Components

Click to view similar products for [Terminal Block Tools & Accessories](#) category:

Click to view products by [Altech](#) manufacturer:

Other Similar products are found below :

[00171430102](#) [00171420102](#) [600HL](#) [600RJ-07](#) [600RJ-11](#) [600RJ-14](#) [600RJS-10](#) [600RJS-12](#) [600RJS-21](#) [601RJ-09](#) [602SP](#) [602Z](#) [604J](#)
[CSTSPC1-2](#) [7B941-7](#) [88943-2100](#) [QC102](#) [1437403-6](#) [1437403-9](#) [1437403-8](#) [1453128-1](#) [147832-1](#) [EC0037-000](#) [MT2/H--](#) [MT6/H-N](#)
[MT6/V-GRND](#) [MT8/H-51-60](#) [BC2-12](#) [BCC-1-8/10](#) [EP2.5/4UN/BG](#) [1707755](#) [1735590](#) [1755480](#) [1789281](#) [1840227](#) [1840230](#) [2-1437402-1](#)
[JA2-03](#) [JB1-03/J](#) [JB2-04](#) [JB2-05](#) [JB2-07](#) [JB2-09/J](#) [PARALLELJUMPERLINK](#) [JS601](#) [2204082](#) [2302463](#) [2305949](#) [8TK2-24](#) [8WA1853](#)