

# Test Jacks 4 mm System



## Type

### PKI 100

4mm insulated panel mount binding post with 2mm cross hole, nickel plated brass, M4 thread terminal, max. panel thickness 3.5mm.

### PKI 10 A / PKI 10 A Au

4mm insulated panel mount binding post with 2mm cross hole, nickel/ gold plated brass, M4 thread terminal, max. panel thickness 2mm

Pin Diameter

4 mm

4 mm

PART NO. / Housing color

- 930757100
- 930757101
- 930757102
- 930757103
- 930757104
- 930757188

- | Nickel Plated | Gold Plated |
|---------------|-------------|
| ● 930103100   | ● 930103700 |
| ● 930103101   | ● 930103701 |
| ● 930103102   | ● 930103702 |
| ● 930103103   | ● 930103703 |
| ● 930103104   | ● 930103704 |
| ● 930103188   | ● 930103788 |

## Technical Data

Contact Type	jack Ø 4 mm, cross hole Ø 2 mm
Connection Type	M4 thread terminal
Voltage Rating	30 VAC / 60 VDC
Measurement Category (IEC61010)	CAT I
Current Rating*	32 A
Contact Resistance	2 mOhm
Mounting Type	screw thread M4

### Material Specifications

Jack Body	nickel plated brass
Contact Spring	-
Housing	Polyamide

### Environmental Conditions

Temperature Range	-25°C to +100 °C (-13 to 212°F)
-------------------	---------------------------------

### Flamability Rating

Housing	UL 94 V-2
---------	-----------

jack Ø 4 mm, cross hole Ø 2 mm

M 4 thread terminal
30 VAC / 60 VDC
CAT I
35 A
2 mOhm
screw thread M4

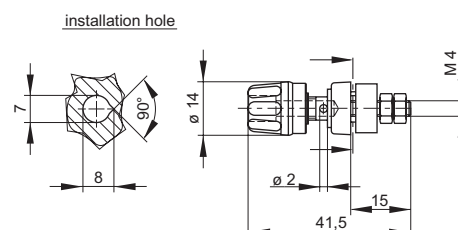
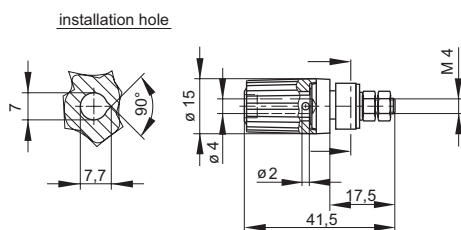
nickel plated brass | gold plated brass

-  
PF

-25°C to +100 °C (-13 to 212°F)

## Drawing

Measurements are shown in millimeters.  
Multiply by 0.03937 to convert to inches.



\* Please consider derating graph on page 80.

## X-ON Electronics

Largest Supplier of Electrical and Electronic Components

*Click to view similar products for [Circuit Breaker Accessories](#) category:*

*Click to view products by [Altech](#) manufacturer:*

Other Similar products are found below :

[CSC-403PS](#) [8T1-D-11A](#) [B151-7184-L](#) [NEB10](#) [8C1-C-721](#) [8T1-E-115](#) [8T1-E-275](#) [8T1-E-278](#) [4-1393247-8](#) [4-1393247-9](#) [506-11315-001](#)  
[3803221](#) [3803231](#) [NEB6](#) [X10506BF](#) [NES](#) [9-1393249-0](#) [802-ESB50UL489](#) [3RV2011-1CA15](#) [607.5689.127](#) [30.329](#) [CA707/TS/01](#)  
[11-32-2733](#) [X10508BF](#) [X22261102](#) [975090700](#) [CX2.5/4/O](#) [975090701](#) [PS-2P](#) [Y30019003](#) [C-TEC1225 P](#) [PS-1006](#) [618.6335.069](#)  
[975455700](#) [BAC03](#) [930727103](#) [934097101](#) [ZG20-1](#) [934097100](#) [JX2.5/4](#) [KEM380CUL](#) [CC848756916](#) [JX2.5/6](#) [JX2.5/5](#) [HSP6/10U](#)  
[DMRBU BLACK BOX](#) [DB16/BU](#) [DB16/BL](#) [CM2.5S2](#) [973604100](#)