

Test Jacks 4 mm System



Type **PKI 100**
4mm insulated panel mount binding post with 2mm cross hole, nickel plated brass, M4 thread terminal, max. panel thickness 3.5mm.

PKI 10 A / PKI 10 A Au
4mm insulated panel mount binding post with 2mm cross hole, nickel/ gold plated brass, M4 thread terminal, max. panel thickness 2mm

Pin Diameter 4 mm

4 mm

PART NO. / Housing color

- 930757100
- 930757101
- 930757102
- 930757103
- 930757104
- 930757188

Nickel Plated **Gold Plated**

- 930103100 ● 930103700
- 930103101 ● 930103701
- 930103102 ● 930103702
- 930103103 ● 930103703
- 930103104 ● 930103704
- 930103188 ● 930103788

Technical Data

Contact Type jack Ø 4 mm, cross hole Ø 2 mm
 Connection Type M4 thread terminal
 Voltage Rating 30 VAC / 60 VDC
 Measurement Category (IEC61010) CAT I
 Current Rating* 32 A
 Contact Resistance 2 mOhm
 Mounting Type screw thread M4

Material Specifications

Jack Body nickel plated brass
 Contact Spring -
 Housing Polyamide

Environmental Conditions

Temperature Range -25°C to +100 °C (-13 to 212°F)

Flamability Rating

Housing UL 94 V-2

Contact Type jack Ø 4 mm, cross hole Ø 2 mm
 Connection Type M 4 thread terminal
 Voltage Rating 30 VAC / 60 VDC
 Measurement Category (IEC61010) CAT I
 Current Rating* 35 A
 Contact Resistance 2 mOhm
 Mounting Type screw thread M4

nickel plated brass | gold plated brass

-

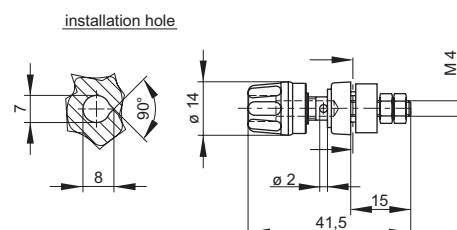
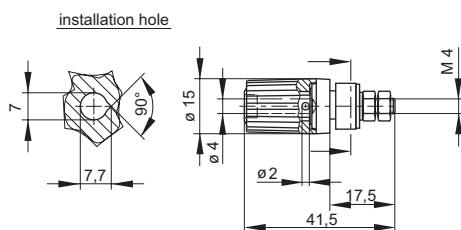
PF

-25°C to +100 °C (-13 to 212°F)

-

Drawing

Measurements are shown in millimeters.
 Multiply by 0.03937 to convert to inches.



* Please consider derating graph on page 80.

X-ON Electronics

Largest Supplier of Electrical and Electronic Components

Click to view similar products for [Test Plugs & Test Jacks](#) category:

Click to view products by [Altech](#) manufacturer:

Other Similar products are found below :

[01-2601-4-0210](#) [01-2601-4-0212](#) [01-2604-4-0212](#) [01-2604-5-0210](#) [01-2150-1-0312](#) [01-2350-1-02](#) [01-2352-1-02](#) [01-2368-1-02](#) [01-2604-4-0210](#) [01-2604-5-0212](#) [01-2606-4-0210](#) [01-2606-4-0212](#) [01-2606-5-0212](#) [M39024/10-01G](#) [M39024/10-17G](#) [M39024/11-09G](#) [M39024/11-42](#) [M39024/11-43](#) [M39024/12-08](#) [707-5311](#) [707-5402-01-19](#) [707-5410](#) [923739-40-I](#) [R644543000](#) [R948161000](#) [R999351000](#) [1408-4](#) [1499-101](#) [1533-1](#) [1659559](#) [1659567](#) [1663921](#) [1663939](#) [1696-102](#) [174-R825B-EX](#) [NYS508-BU](#) [NYS508-O](#) [211-101](#) [RS100GBL](#) [RS250GBL](#) [251-102](#) [25-2251-2-03](#) [25-2259-2-03](#) [923743-16-I](#) [923743-24-I](#) [923743-28-I](#) [2854-BLU](#) [2970-BLK](#) [30-443G](#) [1680](#)