

Test Jacks 4 mm System



Type **PKI 100**
4mm insulated panel mount binding post with 2mm cross hole, nickel plated brass, M4 thread terminal, max. panel thickness 3.5mm.

PKI 10 A / PKI 10 A Au
4mm insulated panel mount binding post with 2mm cross hole, nickel/ gold plated brass, M4 thread terminal, max. panel thickness 2mm

Pin Diameter 4 mm

4 mm

PART NO. / Housing color

- 930757100
- 930757101
- 930757102
- 930757103
- 930757104
- 930757188

Nickel Plated **Gold Plated**

- 930103100 ● 930103700
- 930103101 ● 930103701
- 930103102 ● 930103702
- 930103103 ● 930103703
- 930103104 ● 930103704
- 930103188 ● 930103788

Technical Data

Contact Type jack Ø 4 mm, cross hole Ø 2 mm
 Connection Type M4 thread terminal
 Voltage Rating 30 VAC / 60 VDC
 Measurement Category (IEC61010) CAT I
 Current Rating* 32 A
 Contact Resistance 2 mOhm
 Mounting Type screw thread M4

Material Specifications

Jack Body nickel plated brass
 Contact Spring -
 Housing Polyamide

Environmental Conditions

Temperature Range -25°C to +100 °C (-13 to 212°F)

Flamability Rating

Housing UL 94 V-2

jack Ø 4 mm, cross hole Ø 2 mm

M 4 thread terminal
 30 VAC / 60 VDC
 CAT I
 35 A
 2 mOhm
 screw thread M4

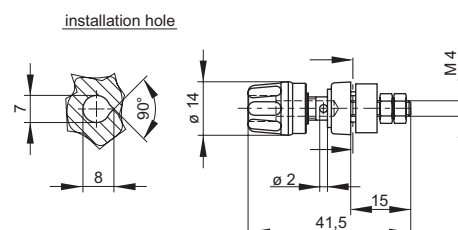
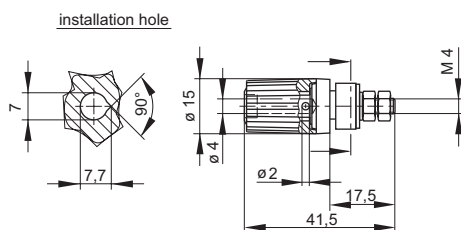
nickel plated brass | gold plated brass

-
 PF

-25°C to +100 °C (-13 to 212°F)

Drawing

Measurements are shown in millimeters.
 Multiply by 0.03937 to convert to inches.



* Please consider derating graph on page 80.

X-ON Electronics

Largest Supplier of Electrical and Electronic Components

Click to view similar products for [Test Plugs & Test Jacks](#) category:

Click to view products by [Altech](#) manufacturer:

Other Similar products are found below :

[579-0400](#) [66000-7](#) [R644543000](#) [R921923000](#) [R921930000](#) [R941344000](#) [R948161000](#) [R999351000](#) [1408-4](#) [1533-1](#) [174-R825B-EX](#)
[NYS508-BU](#) [1680](#) [174-R819B-EX](#) [R644543003](#) [R644543004](#) [R644543020](#) [R644543021](#) [R921926000](#) [R921931000](#) [R921932000](#)
[R921934000](#) [R929991000](#) [R941460000](#) [R941461000](#) [R941463600](#) [R941920600](#) [R948160000](#) [31B-2-RED](#) [032-0016-023](#) [105-1106-001](#)
[108-1000-106](#) [108-2301-621](#) [66001-9](#) [7013](#) [1395080-1](#) [930166100](#) [NYS508-GR](#) [NYS508-W](#) [NYS508-Y](#) [NYS511-R](#) [BP30-2BR10-B PKG](#)
[BP30-10-WT](#) [BP30-2BR-B PKG](#) [BP30Y-1 PKG](#) [R941049000](#) [R941340000](#) [R948141029](#) [R921922000](#) [R644543022](#)