

Test Jacks 4 mm System

Type

KD 10

4mm Insulated Adapter, nickel plated brass, for two 4mm plugs



KUN 10

4mm Insulated Adapter, tin plated brass jack and screw terminal max 1.5mm²



Pin Diameter

4 mm

4 mm

PART NO. / Housing color

● 930109100
● 930109101

● 930189100
● 930189101

Technical Data

Contact Type	jack Ø 4 mm
Connection Type	jack (Ø 4 mm)
Voltage Rating	30 VAC / 60 VDC
Measurement Category (IEC61010)	CAT I
Current Rating*	10 A
Contact Resistance	5 mOhm
Mounting Type	-

Material Specifications

Jack Body	nickel plated brass
Contact Spring	-
Housing	PS

Environmental Conditions

Temperature Range	-25°C to +70 °C (-13 to 158°F)
-------------------	--------------------------------

Flamability Rating

Housing	UL 94 HB
---------	----------

jack Ø 4 mm
screw terminal max. 1.5mm ²
30 VAC / 60 VDC
CAT I
16 A
3 mOhm
-

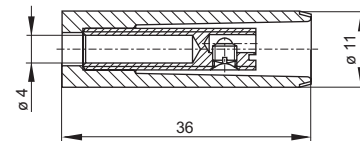
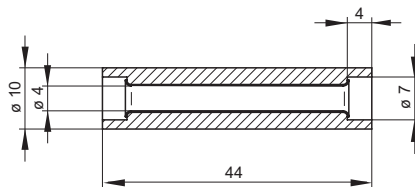
tin plated brass
-
PS

-25°C to +70 °C (-13 to 158°F)

UL 94 HB

Drawing

Measurements are shown in millimeters.
Multiply by 0.03937 to convert to inches.



* Please consider derating graph on page 80.

X-ON Electronics

Largest Supplier of Electrical and Electronic Components

Click to view similar products for [Test Plugs & Test Jacks](#) category:

Click to view products by [Altech](#) manufacturer:

Other Similar products are found below :

[01-2601-4-0210](#) [01-2601-4-0212](#) [01-2604-4-0212](#) [01-2350-1-02](#) [01-2368-1-02](#) [01-2606-4-0210](#) [01-2606-5-0212](#) [M39024/11-09G](#)
[M39024/11-42](#) [M39024/11-43](#) [M39024/12-08](#) [707-5311](#) [707-5402-01-19](#) [707-5410](#) [R948161000](#) [1408-4](#) [1533-1](#) [1659559](#) [1659567](#)
[1663921](#) [1663939](#) [1696-102](#) [174-R825B-EX](#) [1905509](#) [1905527](#) [1914916](#) [211-101](#) [RS100GBL](#) [RS250GBL](#) [251-102](#) [25-2251-2-03](#) [25-](#)
[2259-2-03](#) [923743-28-I](#) [2854-BLU](#) [2970-BLK](#) [30-443G](#) [1909861](#) [1916120](#) [1916466](#) [1918007](#) [1919515](#) [1920271](#) [1929125](#) [1933440](#)
[1938303](#) [1944375](#) [204-103](#) [2079](#) [2435108](#) [2803-102](#)