

Test Jacks 4 mm System



Type

BIL 30 / BIL 30 Au

4mm panel mount test jack, tin/ gold plated brass, M6 thread screw/ solder terminal, max. panel thickness 4mm

Pin Diameter

4 mm

PART NO. / Housing color

Nickel Plated	Gold Plated
● 930166100	● 930166700
● 930166101	● 930166701
● 930166102	● 930166702
● 930166103	● 930166703
● 930166104	● 930166704
● 930166105	● 930166705
● 930166106	● 930166706
● 930166107	● 930166707
● 930166109	● 930166709



BUG 10 / BUG 10 Au

4mm panel mount test jack, tin/ gold plated brass, M6 thread screw/ solder terminal, max. panel thickness 8mm

4 mm

Nickel Plated	Gold Plated
● 930175100	● 930175700
● 930175101	● 930175701
● 930175102	● 930175702
● 930175103	● 930175703
● 930175104	● 930175704
○ 930175107	○ 930175707

Technical Data

Contact Type	jack Ø 4 mm
Connection Type	M6 thread, solder terminal
Voltage Rating	30 VAC / 60 VDC
Measurement Category (IEC61010)	CAT I
Current Rating*	32 A
Contact Resistance	5 mOhm
Mounting Type	screw thread M6

Material Specifications

Jack Body	tin / gold plated brass
Contact Spring	-
Housing	Polyamide

Environmental Conditions

Temperature Range	-25°C to +85 °C (-13 to 185°F)
-------------------	--------------------------------

Flamability Rating

Housing	UL 94 V-2
---------	-----------

jack Ø 4 mm
M6 thread, solder terminal
30 VAC / 60 VDC
CAT I
16 A
5 mOhm
screw thread M6

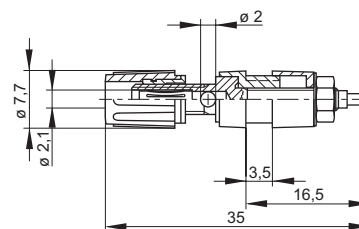
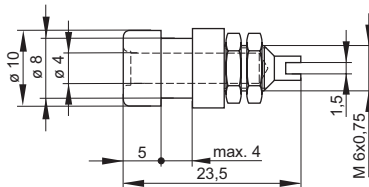
tin / gold plated brass
-
Polyamide

-25°C to +85 °C (-13 to 185°F)

UL 94 V-2

Drawing

Measurements are shown in millimeters.
Multiply by 0.03937 to convert to inches.



* Please consider derating graph on page 80.

X-ON Electronics

Largest Supplier of Electrical and Electronic Components

Click to view similar products for [Circuit Breaker Accessories](#) category:

Click to view products by [Altech](#) manufacturer:

Other Similar products are found below :

[CSC-403PS](#) [8T1-D-11A](#) [B151-7184-L](#) [NEB10](#) [8C1-C-721](#) [8T1-E-115](#) [8T1-E-275](#) [8T1-E-278](#) [4-1393247-8](#) [4-1393247-9](#) [506-11315-001](#)
[3803221](#) [3803231](#) [NEB6](#) [X10506BF](#) [NES](#) [9-1393249-0](#) [802-ESB50UL489](#) [3RV2011-1CA15](#) [607.5689.127](#) [30.329](#) [CA707/TS/01](#)
[11-32-2733](#) [X10508BF](#) [X22261102](#) [975090700](#) [CX2.5/4/O](#) [975090701](#) [PS-2P](#) [Y30019003](#) [C-TEC1225 P](#) [PS-1006](#) [618.6335.069](#)
[975455700](#) [BAC03](#) [930727103](#) [934097101](#) [ZG20-1](#) [934097100](#) [JX2.5/4](#) [KEM380CUL](#) [CC848756916](#) [JX2.5/6](#) [JX2.5/5](#) [HSP6/10U](#)
[DMRBU BLACK BOX](#) [DB16/BU](#) [DB16/BL](#) [CM2.5S2](#) [973604100](#)