

Test Jacks 4 mm System



Type

BIL 30 / BIL 30 Au

4mm panel mount test jack, tin/ gold plated brass, M6 thread screw/ solder terminal, max. panel thickness 4mm

Pin Diameter

4 mm

PART NO. / Housing color

Nickel Plated	Gold Plated
● 930166100	● 930166700
● 930166101	● 930166701
● 930166102	● 930166702
● 930166103	● 930166703
● 930166104	● 930166704
● 930166105	● 930166705
● 930166106	● 930166706
● 930166107	● 930166707
● 930166109	● 930166709



BUG 10 / BUG 10 Au

4mm panel mount test jack, tin/ gold plated brass, M6 thread screw/ solder terminal, max. panel thickness 8mm

4 mm

Nickel Plated	Gold Plated
● 930175100	● 930175700
● 930175101	● 930175701
● 930175102	● 930175702
● 930175103	● 930175703
● 930175104	● 930175704
○ 930175107	○ 930175707

Technical Data

Contact Type	jack Ø 4 mm
Connection Type	M6 thread, solder terminal
Voltage Rating	30 VAC / 60 VDC
Measurement Category (IEC61010)	CAT I
Current Rating*	32 A
Contact Resistance	5 mOhm
Mounting Type	screw thread M6

Material Specifications

Jack Body	tin / gold plated brass
Contact Spring	-
Housing	Polyamide

Environmental Conditions

Temperature Range	-25°C to +85 °C (-13 to 185°F)
-------------------	--------------------------------

Flamability Rating

Housing	UL 94 V-2
---------	-----------

jack Ø 4 mm
M6 thread, solder terminal
30 VAC / 60 VDC
CAT I
16 A
5 mOhm
screw thread M6

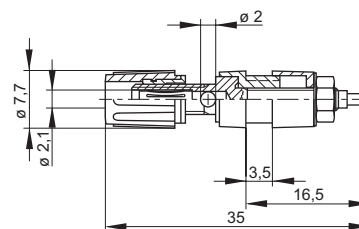
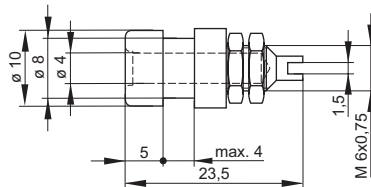
tin / gold plated brass
-
Polyamide

-25°C to +85 °C (-13 to 185°F)

UL 94 V-2

Drawing

Measurements are shown in millimeters.
Multiply by 0.03937 to convert to inches.



* Please consider derating graph on page 80.

X-ON Electronics

Largest Supplier of Electrical and Electronic Components

Click to view similar products for [Test Plugs & Test Jacks](#) category:

Click to view products by [Altech](#) manufacturer:

Other Similar products are found below :

[01-2601-4-0210](#) [01-2601-4-0212](#) [01-2604-4-0212](#) [01-2604-5-0210](#) [01-2150-1-0312](#) [01-2350-1-02](#) [01-2352-1-02](#) [01-2368-1-02](#) [01-2604-4-0210](#) [01-2604-5-0212](#) [01-2606-4-0210](#) [01-2606-4-0212](#) [01-2606-5-0212](#) [M39024/10-01G](#) [M39024/10-17G](#) [M39024/11-09G](#) [M39024/11-42](#) [M39024/11-43](#) [M39024/12-08](#) [707-5311](#) [707-5402-01-19](#) [707-5410](#) [923739-40-I](#) [R644543000](#) [R948161000](#) [R999351000](#) [1408-4](#) [1499-101](#) [1533-1](#) [1659559](#) [1659567](#) [1663921](#) [1663939](#) [1696-102](#) [174-R825B-EX](#) [NYS508-BU](#) [NYS508-O](#) [211-101](#) [RS100GBL](#) [RS250GBL](#) [251-102](#) [25-2251-2-03](#) [25-2259-2-03](#) [923743-16-I](#) [923743-24-I](#) [923743-28-I](#) [2854-BLU](#) [2970-BLK](#) [30-443G](#) [1680](#)