

Test Jacks 2 mm System



Type

MPB 1

2mm mini test jack, dimensions according to DIN41649. Suitable for testing PCB boards during operation.

Pin Diameter

2 mm

PART NO. / Housing color

● 930224100

● 930224101



MPK 1

2mm insulated panel mount binding post with cross hole, gold plated Copper-Beryllium contact spring, tin plated brass thread bold with solder terminal. max. panel thickness 8mm

2 mm

● 930268100

● 930268101

Technical Data

| | |
|---------------------------------|---------------------------|
| Contact Type | spring-loaded jack Ø 2 mm |
| Connection Type | solder terminal |
| Voltage Rating | 30 VAC / 60 VDC |
| Measurement Category (IEC61010) | CAT I |
| Current Rating* | 6 A |
| Contact Resistance | 6 mOhm |
| Mounting Type | PCB |

Material Specifications

| | |
|----------------|-------------------|
| Jack Body | - |
| Contact Spring | tin plated bronze |
| Housing | PC |

Environmental Conditions

| | |
|-------------------|-------------------------------|
| Temperature Range | -20°C to +60 °C (-4 to 140°F) |
|-------------------|-------------------------------|

Flamability Rating

| | |
|---------|----------|
| Housing | UL 94 HB |
|---------|----------|

| | |
|---------------------------------|--|
| Contact Type | spring-loaded jack Ø 2 mm, cross hole Ø 2 mm |
| Connection Type | solder terminal |
| Voltage Rating | 30 VAC / 60 VDC |
| Measurement Category (IEC61010) | CAT I |
| Current Rating* | 6 A |
| Contact Resistance | 6 mOhm |
| Mounting Type | screw thread M3 |

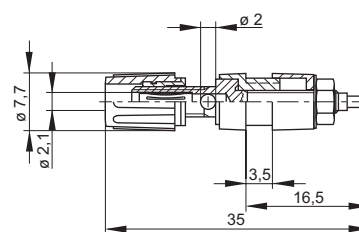
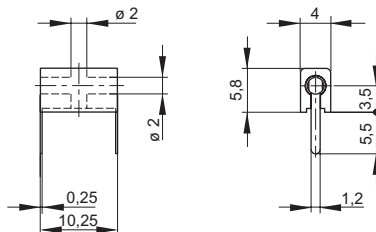
| | |
|----------------|------------------------------|
| Jack Body | gold plated copper-beryllium |
| Contact Spring | - |
| Housing | Polyamide |

| | |
|-------------------|-------------------------------|
| Temperature Range | -20°C to +60 °C (-4 to 140°F) |
|-------------------|-------------------------------|

| | |
|---------|-----------|
| Housing | UL 94 V-2 |
|---------|-----------|

Drawing

Measurements are shown in millimeters.
Multiply by 0.03937 to convert to inches.



* Please consider derating graph on page 80.

X-ON Electronics

Largest Supplier of Electrical and Electronic Components

Click to view similar products for [Test Plugs & Test Jacks](#) category:

Click to view products by [Altech](#) manufacturer:

Other Similar products are found below :

[01-2601-4-0210](#) [01-2601-4-0212](#) [01-2604-4-0212](#) [01-2604-5-0210](#) [01-2150-1-0312](#) [01-2350-1-02](#) [01-2352-1-02](#) [01-2368-1-02](#) [01-2604-4-0210](#) [01-2604-5-0212](#) [01-2606-4-0210](#) [01-2606-4-0212](#) [01-2606-5-0212](#) [M39024/10-01G](#) [M39024/10-17G](#) [M39024/11-09G](#) [M39024/11-42](#) [M39024/11-43](#) [M39024/12-08](#) [707-5311](#) [707-5402-01-19](#) [707-5410](#) [923739-40-I](#) [R644543000](#) [R948161000](#) [R999351000](#) [1408-4](#) [1499-101](#) [1533-1](#) [1659559](#) [1659567](#) [1663921](#) [1663939](#) [1696-102](#) [174-R825B-EX](#) [NYS508-BU](#) [NYS508-O](#) [211-101](#) [RS100GBL](#) [RS250GBL](#) [251-102](#) [25-2251-2-03](#) [25-2259-2-03](#) [923743-16-I](#) [923743-24-I](#) [923743-28-I](#) [2854-BLU](#) [2970-BLK](#) [30-443G](#) [1680](#)