



# Test Jacks 4 mm System

## Type

### PK 110

4mm insulated panel mount binding post with 2mm cross hole, nickel plated brass M4 thread terminal.

### PKI 110

4mm insulated panel mount binding post with 2mm cross hole, nickel plated brass, M4 thread terminal, max. panel thickness 3.5mm.

Pin Diameter

4 mm

4 mm

PART NO. / Housing color

- 931713100
- 931713101

- 931714100
- 931714101
- 931714102
- 931714103
- 931714104
- 931714188

## Technical Data

Contact Type	jack Ø 4 mm, cross hole Ø 2 mm
Connection Type	M4 thread terminal
Voltage Rating	30 VAC / 60 VDC
Measurement Category (IEC61010)	CAT I
Current Rating*	35 A
Contact Resistance	2 mOhm
Mounting Type	screw thread M4

## Material Specifications

Jack Body	nickel plated brass
Contact Spring	-
Housing	Polyamide

## Environmental Conditions

Temperature Range	-25°C to +100 °C (-13 to 212°F)
-------------------	---------------------------------

## Flamability Rating

Housing	UL 94 V-2
---------	-----------

jack Ø 4 mm, cross hole Ø 2 mm

Connection Type	M4 thread terminal
Voltage Rating	30 VAC / 60 VDC
Measurement Category (IEC61010)	CAT I
Current Rating*	35 A
Contact Resistance	2 mOhm
Mounting Type	screw thread M4

nickel plated brass

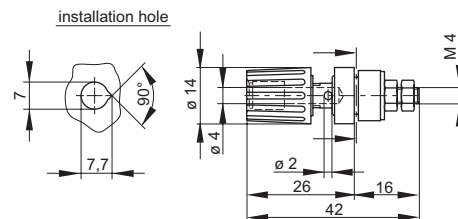
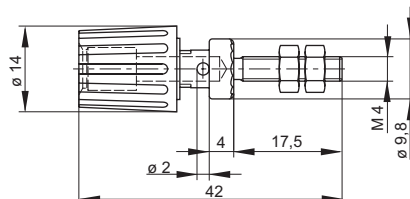
Contact Spring	-
Housing	Polyamide

-25°C to +100 °C (-13 to 212°F)

UL 94 V-2

## Drawing

Measurements are shown in millimeters.  
Multiply by 0.03937 to convert to inches.



\* Please consider derating graph on page 80.

## X-ON Electronics

Largest Supplier of Electrical and Electronic Components

*Click to view similar products for [Test Sockets](#) category:*

*Click to view products by [Altech](#) manufacturer:*

Other Similar products are found below :

[AXS-5032-04-02](#) [AXS-3225-04-06](#) [AXS-7050-04-12](#) [5662](#) [BP30-10-B](#) [BP30GNN-1 PKG](#) [BP30-10Y-1 PKG](#) [AXS-7050-04-01](#) [AXS-5032-04-06](#) [AXS-2520-04-01](#) [AXS-5032-04-04](#) [930308101](#) [931714101](#) [15.0084-21](#) [563-0500](#) [20.1020-21](#) [20-313137](#) [20-313139](#) [20-313144](#) [20-313140](#) [20-313143](#) [22.1042](#) [+ 22.2370-22](#) [23.1010-23, 24, 25, 26, 27](#) [24.0160-1+25.0035](#) [24.0160-4+25.0035](#) [24.116-22](#) [5281](#) [5279](#) [450-3704-01-06-00](#) [AXS-3225-04-04](#) [AXS-3225-04-10](#) [AXS-7550-06-03](#) [AXS-7550-06-05](#) [269RB](#) [2713BB](#) [BP30BN-1 PKG](#) [BP30RN-1 PKG](#) [571-0200](#) [450-3422-01-06-00](#) [450-3888-01-04-00](#) [BP30GP10](#) [571-0400](#) [571-0600](#) [66.9131-23](#) [66.9427-22](#) [BP21-2BRN-B PKG](#) [930058104](#) [930103102](#) [930103188](#) [930103700](#)