

# Test Jacks 4 mm System



## Type

### KUN 30 / KUN 30 Au

4mm Adapter, nickel/ gold plated brass with solder terminal max 2.5mm<sup>2</sup>. Flexible, shatter-proof insulation sleeve

Pin Diameter

4 mm

PART NO. / Housing color

Nickel Plated	Gold Plated
● 931804100	● 931804700
● 931804101	● 931804701
● 931804102	● 931804702
● 931804103	● 931804703
● 931804104	● 931804704
○ 931804107 nickel	○ 931804707 gold



### PB 4

4mm test jack, dimensions according to DIN41649. Suitable for testing PCB boards during operation.

4 mm

● 973582100
● 973582101

## Technical Data

Contact Type	jack Ø 4 mm
Connection Type	solder terminal (max. 2.5mm <sup>2</sup> )
Voltage Rating	30 VAC / 60 VDC
Measurement Category (IEC61010)	CAT I
Current Rating*	16 A
Contact Resistance	3 mOhm
Mounting Type	-

## Material Specifications

Jack Body	nickel plated brass   gold plated brass
Contact Spring	-
Housing	PVC-P

## Environmental Conditions

Temperature Range	-25°C to +70 °C (-13 to 158°F)
-------------------	--------------------------------

## Flamability Rating

Housing	-
---------	---

jack Ø 4 mm

Connection Type	solder
Voltage Rating	30 VAC / 60 VDC
Measurement Category (IEC61010)	CAT I
Current Rating*	16 A
Contact Resistance	5 mOhm
Mounting Type	PCB

tin plated brass

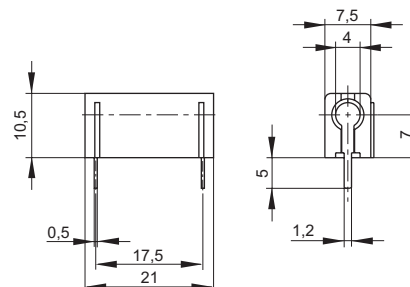
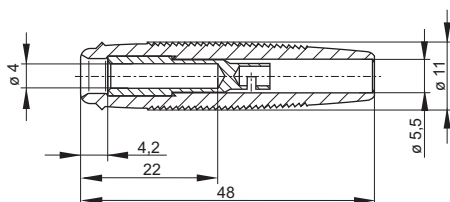
Contact Spring	-
Housing	PC

-25°C to +70 °C (-13 to 158°F)

UL 94 HB

## Drawing

Measurements are shown in millimeters.  
Multiply by 0.03937 to convert to inches.



\* Please consider derating graph on page 80.

## X-ON Electronics

Largest Supplier of Electrical and Electronic Components

*Click to view similar products for [Test Plugs & Test Jacks](#) category:*

*Click to view products by [Altech](#) manufacturer:*

Other Similar products are found below :

[01-2601-4-0210](#) [01-2601-4-0212](#) [01-2604-4-0212](#) [01-2604-5-0210](#) [01-2150-1-0312](#) [01-2350-1-02](#) [01-2352-1-02](#) [01-2368-1-02](#) [01-2604-4-0210](#) [01-2604-5-0212](#) [01-2606-4-0210](#) [01-2606-4-0212](#) [01-2606-5-0212](#) [M39024/10-01G](#) [M39024/10-17G](#) [M39024/11-09G](#) [M39024/11-42](#) [M39024/11-43](#) [M39024/12-08](#) [707-5311](#) [707-5402-01-19](#) [707-5410](#) [923739-40-I](#) [R644543000](#) [R948161000](#) [R999351000](#) [1408-4](#) [1499-101](#) [1533-1](#) [1659559](#) [1659567](#) [1663921](#) [1663939](#) [1696-102](#) [174-R825B-EX](#) [NYS508-BU](#) [NYS508-O](#) [211-101](#) [RS100GBL](#) [RS250GBL](#) [251-102](#) [25-2251-2-03](#) [25-2259-2-03](#) [923743-16-I](#) [923743-24-I](#) [923743-28-I](#) [2854-BLU](#) [2970-BLK](#) [30-443G](#) [1680](#)