

Type

# Clamp-type Test Probes 0.64 mm system



## MICRO-KLEPS

Miniature clamp-type test probe with rotating grip jaws (SMD technology). The insulated shaft can be bent up to 35°. Suitable for very thin wires and densely packed contact points (1.27 mm IC spacing pitch). Connects with MKL... and MAL...

2 mm  
rotating grip jaws

973972100 ●  
973972101 ●



## KLEPS 3 ST

Miniature clamp-type test probe with rotating grip jaws. Suitable for very thin wires and densely packed contacts. Connects with MKL... and MAL...

3.5 mm  
rotating grip jaws

973592100 ●  
973592101 ●

Clamping range  
Clamp type

PART NO. / Housing color

### Technical data

Type of termination  
Rated voltage  
Measurement cat. acc. to IEC61010  
Rated current\*  
Contact resistance

2x pin Ø 0.64 mm  
30 VAC / 60 VDC  
CAT I  
2 A  
10 mOhm

### Material Specifications

Contact material

grip jaws: spring steel,  
pin: brass

Contact surface material  
Housing material

grip jaws: tin, pin: nickel  
PBT

### Environmental conditions

Temperature range

-25 °C to +100 °C

### Inflamability class

Housing (basic material)

UL 94 HB

pin Ø 0.64 mm  
30 VAC / 60 VDC  
CAT I  
2 A  
10 mOhm

grip jaws: spring steel,  
pin: brass

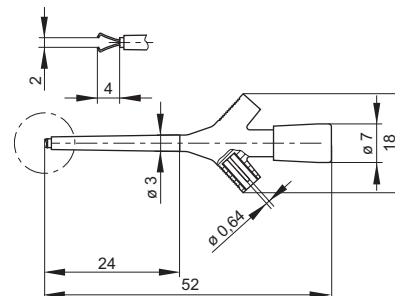
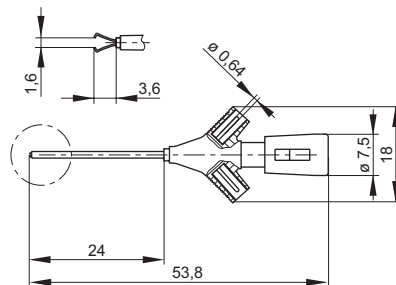
grip jaws: tin, pin: nickel  
PBT

-25 °C to +100 °C

UL 94 HB

### Drawing

Measurements are shown in millimeters.  
Multiply by 0.03937 to convert to inches.



## X-ON Electronics

Largest Supplier of Electrical and Electronic Components

*Click to view similar products for [Test Probes](#) category:*

*Click to view products by [Altech](#) manufacturer:*

Other Similar products are found below :

[6214](#) [6474](#) [815003](#) [923832-BK-B](#) [P-KIT-1](#) [KT-MS001](#) [925250-R](#) [923848-C](#) [973368101](#) [972318101](#) [972318100](#) [MXHQ87WJ3000](#) [PK2-5MM-102](#) [382254](#) [TAS90](#) [VL1735/45](#) [973368100](#) [972327100](#) [972327101](#) [973995100](#) [973995101](#) [CT3982B-120](#) [CT4386](#) [PP023-1](#) [PK1-5MM-125](#) [PK1-5MM-127](#) [PP026-1](#) [P6139B-PK10](#) [PQ215](#) [PQ219](#) [PQ218](#) [GE.3421](#) [GE.3121](#) [GE.1511](#) [GE.1521](#) [GE.2511](#) [HVP15B](#) [TT-SI7002](#) [4005](#) [4011](#) [4013](#) [4014](#) [4015](#) [4016](#) [4018](#) [P TK-100](#) [P TK-250/100](#) [UTH05](#) [402-IEC-RT](#) [402-IEC-SW](#)