

Type

Clamp-type Test Probes 0.64 mm system



MICRO-KLEPS

Miniature clamp-type test probe with rotating grip jaws (SMD technology). The insulated shaft can be bent up to 35°. Suitable for very thin wires and densely packed contact points (1.27 mm IC spacing pitch). Connects with MKL... and MAL...

2 mm
rotating grip jaws

973972100 ●
973972101 ●



KLEPS 3 ST

Miniature clamp-type test probe with rotating grip jaws. Suitable for very thin wires and densely packed contacts. Connects with MKL... and MAL...

3.5 mm
rotating grip jaws

973592100 ●
973592101 ●

Clamping range
Clamp type

PART NO. / Housing color

Technical data

Type of termination
Rated voltage
Measurement cat. acc. to IEC61010
Rated current*
Contact resistance

2x pin Ø 0.64 mm
30 VAC / 60 VDC
CAT I
2 A
10 mOhm

Material Specifications

Contact material

grip jaws: spring steel,
pin: brass

Contact surface material
Housing material

grip jaws: tin, pin: nickel
PBT

Environmental conditions

Temperature range

-25 °C to +100 °C

Inflamability class

Housing (basic material)

UL 94 HB

pin Ø 0.64 mm
30 VAC / 60 VDC
CAT I
2 A
10 mOhm

grip jaws: spring steel,
pin: brass

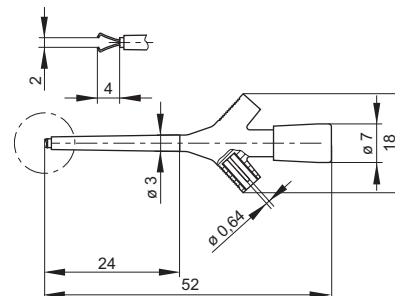
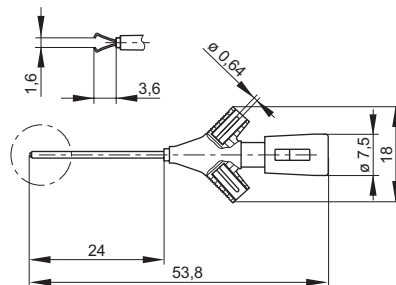
grip jaws: tin, pin: nickel
PBT

-25 °C to +100 °C

UL 94 HB

Drawing

Measurements are shown in millimeters.
Multiply by 0.03937 to convert to inches.



X-ON Electronics

Largest Supplier of Electrical and Electronic Components

Click to view similar products for [Test Probes](#) category:

Click to view products by [Altech](#) manufacturer:

Other Similar products are found below :

[6214](#) [6265](#) [6474](#) [815003](#) [923832-BK-B](#) [P-KIT-1](#) [R941850000](#) [925250-R](#) [72923-2](#) [923848-C](#) [973368101](#) [972318101](#) [972318100](#)
[MXHQ87WJ3000](#) [66.9115-23](#) [850182](#) [TAS90](#) [VL1735/45](#) [973368100](#) [972327100](#) [972327101](#) [975017700](#) [975018700](#) [973995100](#)
[973995101](#) [100039-080-958](#) [CT3986B-120](#) [CT3987B-120](#) [CT3983B-120](#) [CT3979B-150](#) [CT3981B-120](#) [CT3985B-120](#) [402-IEC-RT](#) [402-](#)
[IEC-SW](#) [404-IEC-RT](#) [AX-CP-01-SET](#) [AX-CP-05-B](#) [AX-CP-05-R](#) [464-IEC-NEEDLE13/0,6-RT](#) [464-IEC-NEEDLE13/0,6-SW](#) [464-IEC-RT](#)
[464-IEC-SW](#) [00043](#) [404-IEC-SW](#) [00125](#) [1445](#) [MPS1RT](#) [0602 4592](#) [0602 4892](#) [0628 0020](#)