

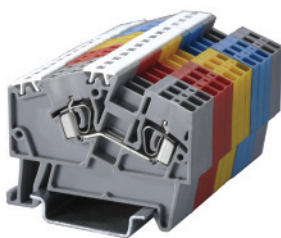
Angular Feed-Through Spring Clamp

These Terminal Blocks are an ideal choice for compact junction boxes having limitations of space and height.

A major advantage of Angular Terminal Blocks over the top wire entry Terminal Blocks is that their profile remains the same across the entire range of Feed Through, Multiple Connection, Ground and Ground Multiple Connection Terminal Blocks.

The other advantages include: Angular entry of wires saving in conductor length, marking / identification facility on the center (top) of the block, multiplication of connections through bridging.

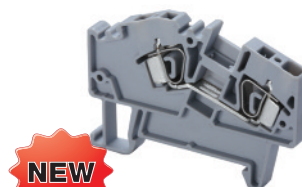
Step Down shorting links are used for shorting spring clamp Terminal Blocks of different sizes. For more details refer to page 77.



AS2.5



AS4



| | | | | | | |
|---------------------|--|----------------|-----------|--|-------------|-----------|
| Terminal Width | 5 mm | | | 6 mm | | |
| Height x Length | 42 x 54 mm | | | 42 x 61.5 mm | | |
| Stripping Length | 11 mm | | | 15 mm | | |
| Insulation Material | Polyamide 6.6 | | | Polyamide 6.6 | | |
| Type of Connection | 2 spring clamps & 2 slots for interconnection | | | 2 spring clamps & 2 slots for interconnection | | |
| Approvals | | | | | | |
| Wire Range | 22-12 AWG | 0.34-2.5 sq.mm | 22-12 AWG | 22-10 AWG | 0.2-4 sq.mm | 22-10 AWG |
| Voltage Rating | 600V | 800 V | 600 V | 600 V | 800 V | 600 V |
| Current Rating | 25 A | 24 A | 25 A | 35 A | 32 A | 35 A |
| Other Approvals | | | | | | |

| | Cat. No. | Std. Pk. | Cat. No. | Std. Pk. |
|-----------------------|--------------|----------|------------|----------|
| Terminal Block | AS2.5 | 100 | AS4 | 100 |
| End Plate | EPAS2.5 | 50 | EPAS4 | 50 |

| DIN Rail for ordering information refer to pages 90-91 | | | | |
|---|-----------|-----|-----------|-----|
| End Stop for ordering information refer to page 92 | CA103 | 50 | CA103 | 50 |
| | CA702 | 50 | CA702 | 50 |
| | CA802 | 50 | CA802 | 50 |
| Jumpers Adjacent | CA801/1 | 100 | CA801/2 | 100 |
| Jumpers Alternate | CA801/1-3 | 100 | CA801/2-3 | 100 |
| Push in type wire jumper | CA901/1 | 100 | CA901/2 | 100 |
| Step Down Jumper see page 98 | CA901/5 | 100 | CA901/4 | 100 |
| | CA901/6 | 100 | CA901/6 | 100 |
| Marking Tags | MT5 | 100 | MT6 | 100 |

X-ON Electronics

Largest Supplier of Electrical and Electronic Components

Click to view similar products for [DIN Rail Terminal Blocks](#) category:

Click to view products by [Altech](#) manufacturer:

Other Similar products are found below :

[00110420202](#) [8WA1011-1BH23](#) [8WA1011-1EF20](#) [91.010](#) [9102100000](#) [91.040](#) [9123140000](#) [9123140001](#) [1333564](#) [DP25-GY-ND](#) [1431306](#)
[1433306](#) [90.070](#) [91.020](#) [912314](#) [260-301_NR](#) [280-331](#) [280-560](#) [280-564](#) [281-611/281-542](#) [281-673/281-411](#) [281-994](#) [283-317](#) [283-607](#)
[284-691](#) [2909798](#) [264-724](#) [264-726](#) [280-530](#) [280-555](#) [280-619](#) [281-610](#) [281-622/281-417](#) [284-317](#) [284-601](#) [2907033](#) [35956](#) [USK 10](#)
[102510](#) [1025100000](#) [5520682](#) [591620-2](#) [1-591651-1](#) [8671050000](#) [264-706](#) [280-575](#) [592814-1](#) [592814-3](#) [UMSTBVK 2 5/ 5-STF-5 08](#)
[NRA37-12](#)