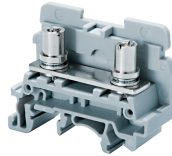
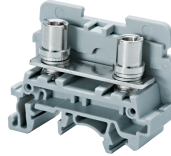


**CSTSB4U**



**CSTSB5U**



**Dimensions & Weight**

|                   | 65 A Bolt Terminal<br>Slotted Barrel | 65 A Bolt Terminal<br>Slotted Barrel |
|-------------------|--------------------------------------|--------------------------------------|
| <b>Width</b>      | <b>17 mm</b>                         | <b>17 mm</b>                         |
| Length            | 50 mm                                | 50 mm                                |
| Height w DIN Rail | 40.7 mm<br>35 x 15 mm                | 40.7 mm<br>48.0 mm                   |
| Weight per piece  | 24 g                                 | 25.5 g                               |

**Technical Data/Ratings**

| Approvals                    |                 |                        |                 |                        |
|------------------------------|-----------------|------------------------|-----------------|------------------------|
| Wire Size (solid / stranded) | <b>22-6 AWG</b> | 1.5-10 mm <sup>2</sup> | <b>22-4 AWG</b> | 1.5-16 mm <sup>2</sup> |
| Voltage Rating               | 600 V           | 1000V AC/DC            | 600 V           | 1000V AC/DC            |
| Current Rating               | 65 A            | 57 A                   | 80 A            | 76 A                   |
| Torque                       | 14 lb-in        | 1.2 Nm                 | 25 lb-in        | 2.0 Nm                 |
| Insulation Material          | Polyamide 66    |                        | Polyamide 66    |                        |

**Installation Instructions**

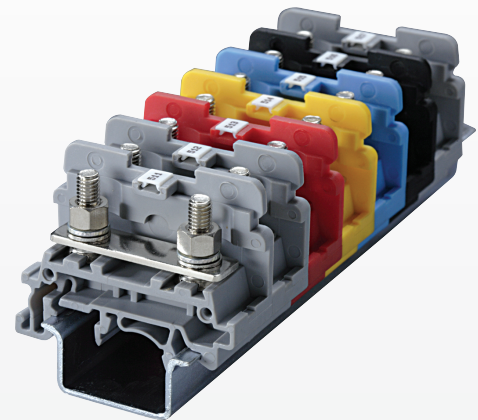
|                       |                        |                        |
|-----------------------|------------------------|------------------------|
| Wire Stripping Length | —                      | —                      |
| Screw / Stud Size     | <b>M4</b>              | <b>M5</b>              |
| Screwdriver           | Flat Head 1.0 x 5.5 mm | Flat Head 1.0 x 5.5 mm |

**Terminal Blocks**

|                        | Cat. No.       | Std. Pk. | Cat. No.       | Std. Pk. |
|------------------------|----------------|----------|----------------|----------|
| <b>Grey (standard)</b> | <b>CSTSB4U</b> | 100      | <b>CSTSB5U</b> | 100      |
| Red R                  | CSTSB4U/R      | 100      | CSTSB5U/R      | 100      |
| Blue BU                | CSTSB4U/BU     | 100      | CSTSB5U/BU     | 100      |
| Black BL               | CSTSB4U/BL     | 100      | CSTSB5U/BL     | 100      |
| Orange O               | CSTSB4U/O      | 100      | CSTSB5U/O      | 100      |
| Green G                | CSTSB4U/G      | 100      | CSTSB5U/G      | 100      |
| Yellow Y               | CSTSB4U/Y      | 100      | CSTSB5U/Y      | 100      |
| White W                | CSTSB4U/W      | 100      | CSTSB5U/W      | 100      |

**Accessories**

|                            | Cat. No.   | Std. Pk.         | Cat. No.   | Std. Pk.         |
|----------------------------|------------|------------------|------------|------------------|
| End Plate                  | EPCSTSU    | 50               | EPCSTSU    | 50               |
| DIN Rail                   | 2511120    | 20               | 2511120    | 20               |
|                            | CA701-15/S | 20               | CA701-15/S | 20               |
|                            | 2511160    | 10               | 2511160    | 10               |
| End Stop                   | CA802      | 50               | CA802      | 50               |
| Insulated Jumper Fork Type | CA514/1-2  | 100              | CA514/1-2  | 100              |
|                            | CA514/1-3  | 50               | CA514/1-3  | 50               |
|                            | CA514/1-4  | 50               | CA514/1-4  | 50               |
| Insulated Jumper Ring Lug  | CA514/3-2  | 100              | CA514/3-2  | 100              |
|                            | CA514/3-3  | 50               | CA514/3-3  | 50               |
|                            | CA514/3-4  | 50               | CA514/3-4  | 50               |
| Protective Cover           | CSTSPC2    | 10               | CSTSPC2    | 10               |
|                            | CSTSPC2-1  | 10               | CSTSPC2-1  | 10               |
|                            | —          | —                | —          | —                |
|                            | CSTSPC1-2  | 10               | CSTSPC1-2  | 10               |
|                            | CSTSPC1-3  | 10               | CSTSPC1-3  | 10               |
|                            | CSTSPC1-4  | 10               | CSTSPC1-4  | 10               |
| Marking Tag                | MT2B4      | 1 Pk. (100 tags) | MT2B4      | 1 Pk. (100 tags) |



## X-ON Electronics

Largest Supplier of Electrical and Electronic Components

*Click to view similar products for [Terminal Block Tools & Accessories](#) category:*

*Click to view products by [Altech](#) manufacturer:*

Other Similar products are found below :

[00171430102](#) [00171420102](#) [600HL](#) [600RJ-07](#) [600RJ-11](#) [600RJ-14](#) [600RJS-10](#) [600RJS-12](#) [600RJS-21](#) [601RJ-09](#) [602SP](#) [602Z](#) [604J](#)  
[CSTSPC1-2](#) [7B941-7](#) [88943-2100](#) [QC102](#) [1437403-6](#) [1437403-9](#) [1437403-8](#) [1453128-1](#) [147832-1](#) [EC0037-000](#) [MT2/H--](#) [MT6/H-N](#)  
[MT6/V-GRND](#) [MT8/H-51-60](#) [BC2-12](#) [BCC-1-8/10](#) [EP2.5/4UN/BG](#) [1707755](#) [1735590](#) [1755480](#) [1789281](#) [1840227](#) [1840230](#) [2-1437402-1](#)  
[JA2-03](#) [JB1-03/J](#) [JB2-04](#) [JB2-05](#) [JB2-07](#) [JB2-09/J](#) [PARALLELJUMPERLINK](#) [JS601](#) [2204082](#) [2302463](#) [2305949](#) [8TK2-24](#) [8WA1853](#)