

Altech thermocouple terminal blocks are designed for use in temperature measuring circuits.

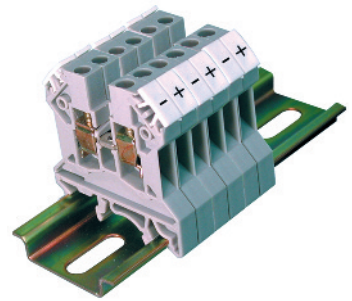
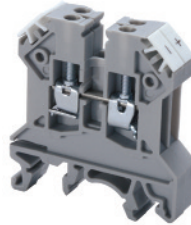
The current carrying part of the terminal blocks have the same material (according to DIN437134 and DIN43714) which is used for compensating cables in the temperature measurement circuit (up to 200°C).

The terminal block is marked for the respective type of thermocouple which enables easy identification for wiring.

- \*
  - CTT2.5UK 'K' type - Chromel (NiCr) Alumel (NiAl)
  - CTT2.5UJ 'J' type - Iron (Fe) Constantan (CuNi)
  - CTT2.5UT 'T' type - Copper (Cu) Constantan (CuNi)
  - CTT2.5UE 'E' type - Chromel (NiCr) Constantan (CuNi)








**CTT2.5UK/J/T/E**



Terminal Width	10 mm
Height x Length	45 x 43 mm
Stripping Length	8 mm
Insulation Material	Polyamide 6.6
Current Carrying Material	*
Type of Connection	4 screw clamps
Wire Range	24-12 AWG
Voltage Rating	300 V
Current Rating	10 A
Torque	7 lb-in

Cat. No.	Std. Pk.
----------	----------

Terminal Block		Cat. No.	Std. Pk.
		CTT2.5UK	50
		CTT2.5UJ	50
		CTT2.5UT	50
		CTT2.5UE	50
End Plate		EP2.5/4UN	50
Isolation Plate		PP2.5/4UN	50
DIN Rail for ordering information refer to page 63			
End Clamp		CA802	100
		CA702	100
Marking Tags (MT Type)		included	

## X-ON Electronics

Largest Supplier of Electrical and Electronic Components

*Click to view similar products for [DIN Rail Terminal Blocks](#) category:*

*Click to view products by [Altech](#) manufacturer:*

Other Similar products are found below :

[00110420202](#) [8WA1011-1BH23](#) [8WA1011-1EF20](#) [91.010](#) [9102100000](#) [91.040](#) [9123140000](#) [9123140001](#) [1333564](#) [DP25-GY-ND](#) [1431306](#)  
[1433306](#) [90.070](#) [91.020](#) [912314](#) [260-301\\_NR](#) [280-331](#) [280-560](#) [280-564](#) [281-611/281-542](#) [281-673/281-411](#) [281-994](#) [283-317](#) [283-607](#)  
[284-691](#) [2909798](#) [264-724](#) [264-726](#) [280-530](#) [280-555](#) [280-619](#) [281-610](#) [281-622/281-417](#) [284-317](#) [284-601](#) [2907033](#) [35956](#) [USK 10](#)  
[102510](#) [1025100000](#) [5520682](#) [591620-2](#) [1-591651-1](#) [8671050000](#) [264-706](#) [280-575](#) [592814-1](#) [592814-3](#) [UMSTBVK 2 5/ 5-STF-5 08](#)  
[NRA37-12](#)