

CY SERIES

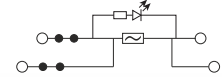
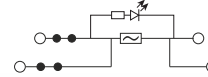
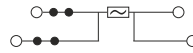
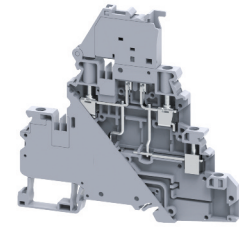
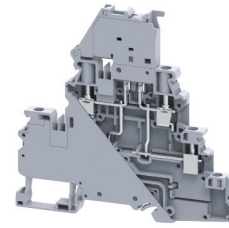
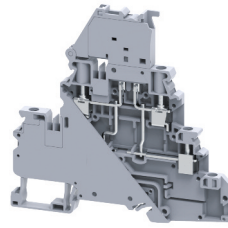
SCREW TERMINAL BLOCKS

Multi-Level Fuse Blocks, 5x20mm, 4 Connection Points

CYDLF4LR

CYDLF4LRL6-60V

CYDLF4LRL110-240V



Fuse Block, 5x20mm
with 4 Connection Points
2x2 Jumper Channels

Fuse Block, 5x20mm , LED
with 4 Connection Points
2x2 Jumper Channels

Fuse Block, 5x20mm , LED
with 4 Connection Points
2x2 Jumper Channels

Dimensions & Weight

Width	6 mm	
Length	94.5 mm	
Height w DIN Rail	35 x 7.5 mm	90.9 mm
	35 x 15 mm	98.4 mm
Weight per piece	34.9 g	

Technical Data/Ratings

Approvals						
Wire Size (solid / stranded)	24-10 AWG	0.2-4 mm ²	24-10 AWG	0.2-4 mm ²	24-10 AWG	0.2-4 mm ²
Voltage Rating	300 V	1000V AC/DC	300 V	1000V AC/DC	300 V	500V AC/DC
Current Rating	10 A	10 A	10 A	10 A	10 A	10 A
Torque	4.5 lb-in	0.5 Nm	4.5 lb-in	0.5 Nm	4.5 lb-in	0.5 Nm
Insulation Material	Polyamide 66		Polyamide 66		Polyamide 66	

Fuse Specifications

Fuse Type	5x20 / 5x25 mm	5x20 / 5x25 mm	5x20 / 5x25 mm
LED Indicator Voltage	-	6-60V AC/DC	110-240V AC/DC

Installation Instructions

Wire Stripping Length	9 mm	9 mm	9 mm
Screwdriver	Flat Head 0.6 x 3.5 mm	Flat Head 0.6 x 3.5 mm	Flat Head 0.6 x 3.5 mm

Terminal Blocks

	Cat. No.	Std. Pk.	Cat. No.	Std. Pk.	Cat. No.	Std. Pk.
Grey (standard)	CYDLF4LR	50	CYDLF4LRL6-60L	50	CYDLF4LRL110-240V	50
Blue BU	CYDLF4LR/BU	50	CYDLF4LRL6-60L/BU	50	CYDLF4LRL110-240V/BU	50
Black BL	CYDLF4LR/BL	50	CYDLF4LRL6-60L/BL	50	CYDLF4LRL110-240V/BL	50

Additional colors available.



Accessories

	Cat. No.	Std. Pk.	Cat. No.	Std. Pk.	Cat. No.	Std. Pk.
DIN Rail	2511120	20	2511120	20	2511120	20
	CA701-15/S	20	CA701-15/S	20	CA701-15/S	20
End Stop	CA702	50	CA702	50	CA702	50
	CA802	50	CA802	50	CA802	50
	CA202	50	CA202	50	CA202	50
Shorting Link/ Jumpers	2 pole JX4/2	100	2 pole JX4/2	100	2 pole JX4/2	100
	3 pole JX4/3	50	3 pole JX4/3	50	3 pole JX4/3	50
	4 pole JX4/4	50	4 pole JX4/4	50	4 pole JX4/4	50
	5 pole -	-	5 pole -	-	5 pole -	-
	6 pole -	-	6 pole -	-	6 pole -	-
	7 pole -	-	7 pole -	-	7 pole -	-
	8 pole JX4/8	10	8 pole JX4/8	10	8 pole JX4/8	10
	10 pole JX4/10	10	10 pole JX4/10	10	10 pole JX4/10	10
	16 pole JX4/16	10	16 pole JX4/16	10	16 pole JX4/16	10
Marking Tag	MT6	1 Pk. (100 tags)	MT6	1 Pk. (100 tags)	MT6	1 Pk. (100 tags)
Warning Label	WLX4	1 Pk. (100 tags)	WLX4	1 Pk. (100 tags)	WLX4	1 Pk. (100 tags)

X-ON Electronics

Largest Supplier of Electrical and Electronic Components

Click to view similar products for [DIN Rail Terminal Blocks](#) category:

Click to view products by [Altech](#) manufacturer:

Other Similar products are found below :

[00110420202](#) [00175550302](#) [8WA1011-1BH23](#) [8WA1011-1EF20](#) [91.040](#) [9123140000](#) [RBO 5-T-B-HEX](#) [1333564](#) [DP25-GY-ND](#) [1431306](#)
[HSL-TB64-DIN](#) [90.070](#) [90.202](#) [912314](#) [260-301_NR](#) [2757571](#) [280-331](#) [280-560](#) [280-564](#) [281-611/281-542](#) [281-673/281-411](#) [281-994](#)
[283-317](#) [283-607](#) [2948995](#) [264-724](#) [264-726](#) [280-530](#) [280-555](#) [280-619](#) [281-610](#) [281-622/281-417](#) [284-317](#) [284-601](#) [2907033](#) [5542152](#)
[35956](#) [USK 10](#) [102510](#) [5520682](#) [5607102](#) [EMH 25-ZE30](#) [591620-2](#) [UM 45-SEFE M.NUT BK](#) [1-591651-1](#) [8671050000](#) [264-706](#) [280-575](#)
[281-664](#) [592814-1](#)