

# CY SERIES

SCREW TERMINAL BLOCKS

Fuse Blocks, 5 x 20mm

## HIGHLIGHTS

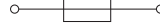
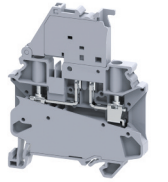
### FEATURES

- **CYF4** Series accepts 5x20mm fuse types
- 6mm wide compact design
- 2 internal Jumper Channels
- Enclosed, no endplates required
- **CYF4L** version with LED for blown fuse indication
- No polarity required

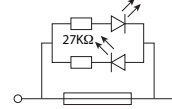
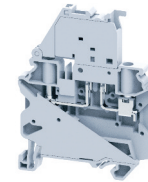
### APPLICATIONS

- Control system with fuse protection

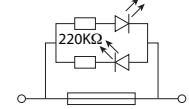
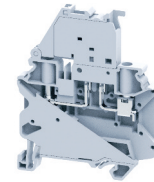
### CYF4



### CYF4L6-60V



### CYF4L110-240V



### Dimensions & Weight

	Fuse Block 5 x 20 mm 2 Jumper Channels	Fuse Block 5 x 20 mm, LED 2 Jumper Channels	Fuse Block 5 x 20 mm, LED 2 Jumper Channels
Width	6 mm	6 mm	6 mm
Length	58.8 mm	58.8 mm	58.8 mm
Height w DIN Rail	35 x 7.5 mm 35 x 15 mm	72.4 mm 79.9 mm	72.4 mm 79.9 mm
Weight per piece	20.2 g	17.4 g	17.4 g

### Technical Data/Ratings

Approvals						
Wire Size (solid / stranded)	24-10 AWG	0.2-4 mm <sup>2</sup>	24-10 AWG	0.2-4 mm <sup>2</sup>	24-10 AWG	0.2-4 mm <sup>2</sup>
Voltage Rating	600 V	1000V AC/DC	600 V	1000V AC/DC	600 V	500V AC/DC
Current Rating	10 A	10 A	10 A	10 A	10 A	10 A
Torque	4.5 lb-in	0.5 Nm	4.5 lb-in	0.5 Nm	4.5 lb-in	0.5 Nm
Insulation Material	Polyamide 66		Polyamide 66		Polyamide 66	

### Fuse Specifications

Fuse Type	5x20 / 5x25 mm	5x20 / 5x25 mm	5x20 / 5x25 mm
LED Indicator Voltage	-	6-60V AC/DC	110-240V AC/DC

### Installation Instructions

Wire Stripping Length	10 mm	10 mm	10 mm
Screwdriver	Flat Head 0.6 x 3.5 mm	Flat Head 0.6 x 3.5 mm	Flat Head 0.6 x 3.5 mm

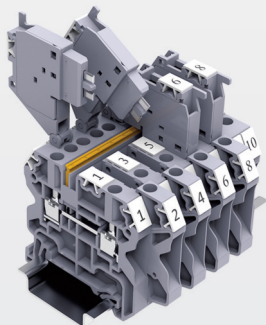
### Terminal Blocks

	Cat. No.	Std. Pk.	Cat. No.	Std. Pk.	Cat. No.	Std. Pk.
<b>Grey (standard)</b>	<b>CYF4</b>	50	<b>CYF4L6-60V</b>	50	<b>CYF4L110-240V</b>	50
Blue BU	CYF4/BU	50	CYF4L6-60V/BU	50	CYF4L110-240V/BU	50
Black BL	CYF4/BL	50	CYF4L6-60V/BL	50	CYF4L110-240V/BL	50

### Accessories

	Cat. No.	Std. Pk.	Cat. No.	Std. Pk.	Cat. No.	Std. Pk.	
DIN Rail	2511120 CA701-15/S	20 20	2511120 CA701-15/S	20 20	2511120 CA701-15/S	20 20	
End Stop	CA702 CA802 CA202	50 50 50	CA702 CA802 CA202	50 50 50	CA702 CA802 CA202	50 50 50	
Shorting Link/ Jumpers	2 pole 3 pole 4 pole 5 pole 6 pole 7 pole 8 pole 10 pole 16 pole	JX4/2 JX4/3 JX4/4 — — — — JX4/8 JX4/10 JX4/16	100 50 50 — — — — 10 10 10	JX4/2 JX4/3 JX4/4 — — — — JX4/8 JX4/10 JX4/16	100 50 50 — — — — 10 10 10	JX4/2 JX4/3 JX4/4 — — — — JX4/8 JX4/10 JX4/16	100 50 50 — — — — 10 10 10
Marking Tag Warning Label	MT6 WLX4	1 Pk. (100 tags) 1 Pk. (100 tags)	MT6 WLX4	1 Pk. (100 tags) 1 Pk. (100 tags)	MT6 WLX4	1 Pk. (100 tags) 1 Pk. (100 tags)	

Additional colors available.



CYF4 Fuse Block Assembly

## X-ON Electronics

Largest Supplier of Electrical and Electronic Components

*Click to view similar products for [DIN Rail Terminal Blocks](#) category:*

*Click to view products by [Altech](#) manufacturer:*

Other Similar products are found below :

[00110420202](#) [00175550302](#) [8WA1011-1BH23](#) [8WA1011-1EF20](#) [91.040](#) [9123140000](#) [RBO 5-T-B-HEX](#) [1333564](#) [DP25-GY-ND](#) [1431306](#)  
[HSL-TB64-DIN](#) [90.070](#) [90.202](#) [912314](#) [260-301\\_NR](#) [2757571](#) [280-331](#) [280-560](#) [280-564](#) [281-611/281-542](#) [281-673/281-411](#) [281-994](#)  
[283-317](#) [283-607](#) [2948995](#) [264-724](#) [264-726](#) [280-530](#) [280-555](#) [280-619](#) [281-610](#) [281-622/281-417](#) [284-317](#) [284-601](#) [2907033](#) [5542152](#)  
[35956](#) [USK 10](#) [102510](#) [5520682](#) [5607102](#) [EMH 25-ZE30](#) [591620-2](#) [UM 45-SEFE M.NUT BK](#) [1-591651-1](#) [8671050000](#) [264-706](#) [280-575](#)  
[281-664](#) [592814-1](#)