

CY SERIES

SCREW TERMINAL BLOCKS

Fuse Blocks, 5 x 20mm

HIGHLIGHTS

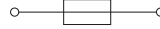
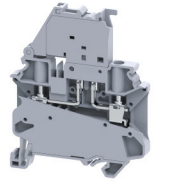
FEATURES

- **CYF4** Series accepts 5x20mm fuse types
- 6mm wide compact design
- 2 internal Jumper Channels
- Enclosed, no endplates required
- **CYF4L** version with LED for blown fuse indication
- No polarity required

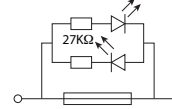
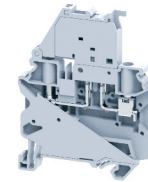
APPLICATIONS

- Control system with fuse protection

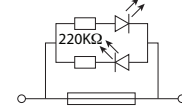
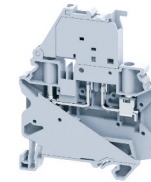
CYF4



CYF4L6-60V



CYF4L110-240V



Dimensions & Weight

	Fuse Block 5 x 20 mm 2 Jumper Channels	Fuse Block 5 x 20 mm, LED 2 Jumper Channels	Fuse Block 5 x 20 mm, LED 2 Jumper Channels
Width	6 mm	6 mm	6 mm
Length	58.8 mm	58.8 mm	58.8 mm
Height w DIN Rail	35 x 7.5 mm 35 x 15 mm	72.4 mm 79.9 mm	72.4 mm 79.9 mm
Weight per piece	20.2 g	17.4 g	17.4 g

Technical Data/Ratings

Approvals						
Wire Size (solid / stranded)	24-10 AWG	0.2-4 mm ²	24-10 AWG	0.2-4 mm ²	24-10 AWG	0.2-4 mm ²
Voltage Rating	600 V	1000V AC/DC	600 V	1000V AC/DC	600 V	500V AC/DC
Current Rating	10 A	10 A	10 A	10 A	10 A	10 A
Torque	4.5 lb-in	0.5 Nm	4.5 lb-in	0.5 Nm	4.5 lb-in	0.5 Nm
Insulation Material	Polyamide 66		Polyamide 66		Polyamide 66	

Fuse Specifications

Fuse Type	5x20 / 5x25 mm	5x20 / 5x25 mm	5x20 / 5x25 mm
LED Indicator Voltage	-	6-60V AC/DC	110-240V AC/DC

Installation Instructions

Wire Stripping Length	10 mm	10 mm	10 mm
Screwdriver	Flat Head 0.6 x 3.5 mm	Flat Head 0.6 x 3.5 mm	Flat Head 0.6 x 3.5 mm

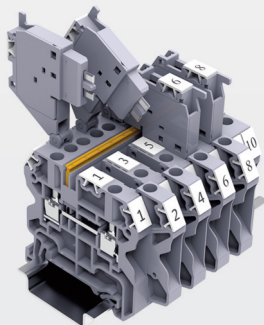
Terminal Blocks

	Cat. No.	Std. Pk.	Cat. No.	Std. Pk.	Cat. No.	Std. Pk.
Grey (standard)	CYF4	50	CYF4L6-60V	50	CYF4L110-240V	50
Blue BU	CYF4/BU	50	CYF4L6-60V/BU	50	CYF4L110-240V/BU	50
Black BL	CYF4/BL	50	CYF4L6-60V/BL	50	CYF4L110-240V/BL	50

Accessories

	Cat. No.	Std. Pk.	Cat. No.	Std. Pk.	Cat. No.	Std. Pk.	
DIN Rail	2511120 CA701-15/S	20 20	2511120 CA701-15/S	20 20	2511120 CA701-15/S	20 20	
End Stop	CA702 CA802 CA202	50 50 50	CA702 CA802 CA202	50 50 50	CA702 CA802 CA202	50 50 50	
Shorting Link/ Jumpers	2 pole 3 pole 4 pole 5 pole 6 pole 7 pole 8 pole 10 pole 16 pole	JX4/2 JX4/3 JX4/4 — — — — JX4/8 JX4/10 JX4/16	100 50 50 — — — — 10 10 10	JX4/2 JX4/3 JX4/4 — — — — JX4/8 JX4/10 JX4/16	100 50 50 — — — — 10 10 10	JX4/2 JX4/3 JX4/4 — — — — JX4/8 JX4/10 JX4/16	100 50 50 — — — — 10 10 10
Marking Tag Warning Label	MT6 WLX4	1 Pk. (100 tags) 1 Pk. (100 tags)	MT6 WLX4	1 Pk. (100 tags) 1 Pk. (100 tags)	MT6 WLX4	1 Pk. (100 tags) 1 Pk. (100 tags)	

Additional colors available.



CYF4 Fuse Block Assembly

X-ON Electronics

Largest Supplier of Electrical and Electronic Components

Click to view similar products for [DIN Rail Terminal Blocks](#) category:

Click to view products by [Altech](#) manufacturer:

Other Similar products are found below :

[1045932](#) [00110420202](#) [00110430402](#) [5724.2/L](#) [592808-3](#) [CTS25U/BL](#) [CTS2.5U-N/Y](#) [91.010](#) [91.040](#) [DP25-GY-ND](#) [15288](#) [90.070](#) [90.905](#)
[91.001](#) [91.020](#) [91.201](#) [91.340](#) [2713793](#) [2757571](#) [280-331](#) [283-317](#) [283-607](#) [2909044](#) [2909798](#) [29-2052](#) [SRT2-OD08CL-1](#)
[CDL4U\(E\)MOV](#) [2757801](#) [2794660](#) [284-317](#) [2890975](#) [2907033](#) [3048496](#) [CTS2.5U-N/O](#) [5542152](#) [5602077](#) [0709880](#) [5520682](#) [5605444](#)
[5607102](#) [EPUSC](#) [SRT2-OD16P](#) [2901288](#) [591620-2](#) [1-591651-1](#) [NRA37-1/2](#) [592814-1](#) [592814-3](#) [SRT2-ID16P](#) [NRA37-12](#)