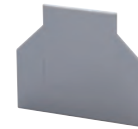


ENDPLATES



| Terminal Block | Cat. No. | Dimensions | Std. Pk. |
|----------------------------------|-----------------|---------------------|----------|
| CTS2.5U-N, CTS4U-N | EP2.5/4UN | 32 x 39 x 1.5mm | 50 |
| CTT2.5UK/J/T/E | | | |
| CCTS6U, CTS10U | EP6/10U | 31 x 42.5 x 1.5mm | 50 |
| CMC1-2 | EPCMC1-2 | 35.5 x 46.5 x 2.5mm | 50 |
| CMC2-2, CMCG4 | EPCMC2-2 | 40.5 x 65 x 2.5mm | 50 |
| CDL4UN, CDLG4 | EPCDL4UN | 47.5 x 57 x 1.5mm | 50 |
| CDLG2.5 | EPCDLG2.5 | 48 x 71.4 x 1.2mm | 50 |
| CTLG2.5 | EPCTLG2.5 | 62.5 x 87.5 x 1.2mm | 50 |
| ODL4U | EPODL4U (Front) | 49 x 86 x 5.5mm | 50 |
| | EP10DL4U (Back) | 24 x 68 x 3mm | 50 |
| CHV Series, CTSUSC Series | EPUSC | 52 x 48.5 x 1.5mm | 50 |
| CTL2.5U Series | EPCTL2.5U | 55.5 x 84 x 1.5mm | 50 |
| CTL2.5U-H Series | EPCTL2.5U-H | 55.5 x 61 x 1.5mm | 50 |
| CAFL4U Series | EPCAF4U | 32 x 72 x 1.5mm | 50 |
| CDS6U | EPCDS6U | 37.2 x 82 x 1.5mm | 50 |
| CKT4U | EPCKT4U | 30.5 x 46.5 x 2.5mm | 50 |
| EPCKT4U | EPCKT4U/4 | 65 x 38.3 x 1.5mm | 50 |
| CDTTU Series | EPCDTTU | 41 x 63 x 3mm | 50 |
| CSDL4U | EPCSFL4U | 28 x 55.5 x 1.6mm | 50 |
| DDDL4U, DDFL4U | EPDDL4U | 49 x 87.6 x 3mm | 50 |
| CDL4U(E) | EPCDL4U | 43 x 55 x 2.4mm | 50 |
| CTC4U | EPCTC4U | 34.5 x 47 x 2.5mm | 50 |
| CMT4 | EPCMT4 | 23 x 27 x 1.5mm | 50 |
| CMB4 | EPCMB4 | 27 x 27 x 7mm | 50 |
| ODL2.5 Series | EPODL2.5 | 49 x 59 x 4.6mm | 50 |
| | EP10DL2.5 | 23 x 59 x 2.5mm | 50 |

PARTITION PLATES



| Terminal Block | Cat. No. | Dimensions | Std. Pk. |
|---------------------------|-----------|-------------------|----------|
| CTS2.5U-N, CTS4U-N | PP2.5/4UN | 37 x 44 x 1.6mm | 50 |
| CTT2.5UK/J/T/E | | | |
| CTS6U, CTS10U | PP6/10U | 37.5 x 56 x 1.5mm | 50 |
| CTS25UN | PP25UN | 42.5 x 62 x 1mm | 50 |
| CTS35UN | PP35UN | 50 x 64.5 x 1mm | 50 |
| CMT4 | PPCMT4 | 32 x 37 x 1.6mm | 50 |

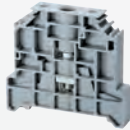
SEPARATOR PLATES



| Terminal Block | Cat. No. | Dimensions | Std. Pk. |
|------------------------------|-----------|---------------------|----------|
| CTS2.5U-N, CTS4U-N | SP2.5/4UN | 17.5 x 17.4 x 1.4mm | 100 |
| CTT2.5UK/J/T/E | | | |
| CTS6U, CTS10U, CTS16U | SP6/10U | 15.4 x 16.2 x 1.5mm | 100 |
| CSL4UN, CDL4UN(I.S.) | SPCDL4U | 15.4 x 16.2 x 1.6mm | 100 |
| CBM4 | SPCMB4 | 14.5 x 12 x 1.5mm | 100 |
| CDLG2.5 | SPCDLG2.5 | 11 x 10.5 x 1 | 100 |

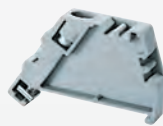
END STOPS

CA202



| Cat. No. | Dimensions | Std. Pk. |
|----------|-------------------|----------|
| CA202 | 44.5 x 50 x 9.5mm | 50 |

CA802



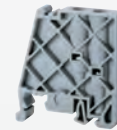
| Cat. No. | Dimensions | Std. Pk. |
|----------|---------------|----------|
| CA802 | 45 x 32 x 8mm | 50 |

CA702



| Cat. No. | Dimensions | Std. Pk. |
|----------|---------------|----------|
| CA702 | 34 x 45 x 9mm | 50 |

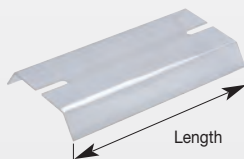
CA102



| Cat. No. | Dimensions | Std. Pk. |
|----------|---------------|----------|
| CA102 | 80 x 46 x 9mm | 50 |

PROTECTIVE COVER

CTSPC COVER

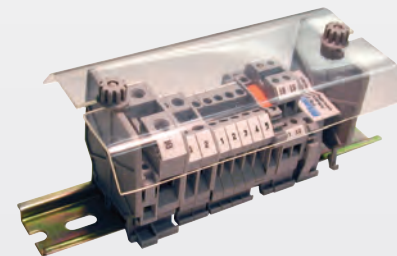


| Cat. No. | Length | Std. Pk. |
|-----------|--------|----------|
| CTSPC/40 | 40mm | 2 |
| CTSPC/90 | 90mm | 2 |
| CTSPC/100 | 100mm | 2 |
| CTSPC/130 | 130mm | 2 |
| CTSPC/150 | 150mm | 2 |
| CTSPC/200 | 200mm | 2 |
| CTSPC/300 | 300mm | 2 |
| CTSPC/330 | 330mm | 2 |

SUPPORT PLATE



| Cat. No. | Std. Pk. |
|----------|----------|
| CSP1 | 50 |



Assembled Block installed with Protective Cover

X-ON Electronics

Largest Supplier of Electrical and Electronic Components

Click to view similar products for [Terminal Block Tools & Accessories](#) category:

Click to view products by [Altech](#) manufacturer:

Other Similar products are found below :

[00171430102](#) [00171420102](#) [600HL](#) [600RJ-07](#) [600RJ-11](#) [600RJ-14](#) [600RJS-10](#) [600RJS-12](#) [600RJS-21](#) [601RJ-09](#) [602SP](#) [602Z](#) [604J](#)
[CSTSPC1-2](#) [7B941-7](#) [88943-2100](#) [QC102](#) [1437403-6](#) [1437403-9](#) [1437403-8](#) [1453128-1](#) [147832-1](#) [EC0037-000](#) [MT2/H--](#) [MT6/H-N](#)
[MT6/V-GRND](#) [MT8/H-51-60](#) [BC2-12](#) [BCC-1-8/10](#) [EP2.5/4UN/BG](#) [1707755](#) [1735590](#) [1755480](#) [1789281](#) [1840227](#) [1840230](#) [2-1437402-1](#)
[JA2-03](#) [JB1-03/J](#) [JB2-04](#) [JB2-05](#) [JB2-07](#) [JB2-09/J](#) [PARALLELJUMPERLINK](#) [JS601](#) [2204082](#) [2302463](#) [2305949](#) [8TK2-24](#) [8WA1853](#)