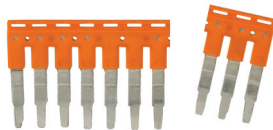


ACCESSORIES

Jumpers / Short Links

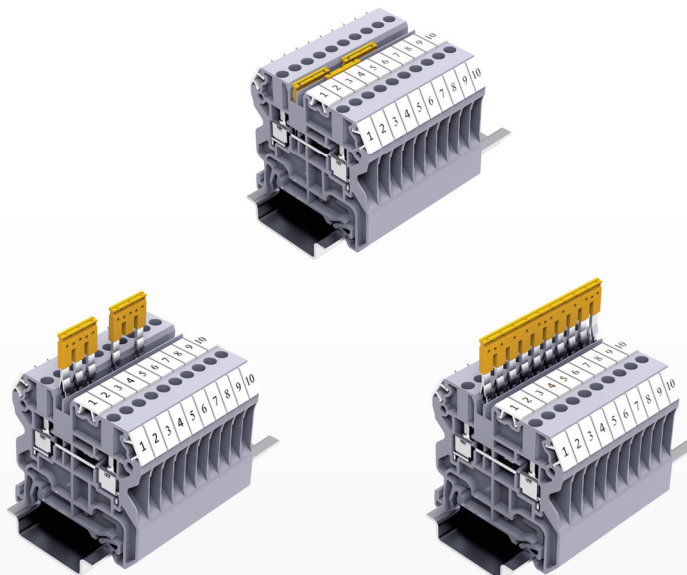


Terminal Block Series	Poles	Cat. No.	Std. Pk.
CY2.5 Series CYG2.5 Series	2 Pole	JX2.5/2	100
	3 Pole	JX2.5/3	50
	4 Pole	JX2.5/4	50
	5 Pole	JX2.5/5	50
	6 Pole	JX2.5/6	10
	7 Pole	JX2.5/7	10
	8 Pole	JX2.5/8	10
10 Pole	JX2.5/10	10	

CY4 Series CYG4 Series	2 Pole	JX4/2	100
	3 Pole	JX4/3	50
CYF4 Series CYK4 Series	4 Pole	JX4/4	50
	8 Pole	JX4/8	10
CYDL Series	10 Pole	JX4/10	10
	16 Pole	JX4/16	10

CY6 Series CYG6 Series	2 Pole	JY6/2	100
---	--------	-------	-----

CY10 Series CYG10 Series	2 Pole	JY10/2	10
---	--------	--------	----



2 Jumper Channels

Endplates

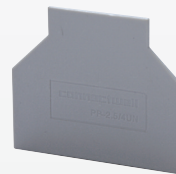


Terminal Block	Cat. No.	Dimensions	Std. Pk.
CY2.5 / CYG2.5 CY4 / CYG4 CY6 / CYG6 CY10 / CYG10	EPCY2.5/10	41.3 x 50 x 1.5 mm	50

CY4/3	EPCY4/3	43 x 58 x 1.5 mm	50
--------------	---------	------------------	----

CY4/4	EPCY4/4	43 x 65 x 1.5 mm	50
--------------	---------	------------------	----

Partition Plates



Terminal Block	Cat. No.	Dimensions	Std. Pk.
CY2.5 / CYG2.5 CY4 / CYG4 CY6 / CYG6 CY10 / CYG10	PPCY2.5/10	42 x 59 x 2 mm	50

End Stops

CA802



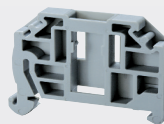
Cat. No.	Dimensions	Std. Pk.
CA802	45 x 32 x 8 mm	50

CA202



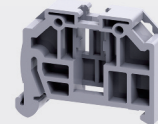
Cat. No.	Dimensions	Std. Pk.
CA202	44.5 x 50 x 9.5 mm	50

CA103
(screwless snap-on)



Cat. No.	Dimensions	Std. Pk.
CA103	41 x 35 x 6mm	50

CA104
(screwless snap-on)



Cat. No.	Dimensions	Std. Pk.
CA104	36 x 41 x 10 mm	50

X-ON Electronics

Largest Supplier of Electrical and Electronic Components

Click to view similar products for [DIN Rail Terminal Blocks](#) category:

Click to view products by [Altech](#) manufacturer:

Other Similar products are found below :

[00110420202](#) [8WA1011-1BH23](#) [8WA1011-1EF20](#) [91.010](#) [9102100000](#) [91.040](#) [9123140000](#) [9123140001](#) [1333564](#) [DP25-GY-ND](#) [1431306](#)
[1433306](#) [90.070](#) [91.020](#) [912314](#) [260-301_NR](#) [280-331](#) [280-560](#) [280-564](#) [281-611/281-542](#) [281-673/281-411](#) [281-994](#) [283-317](#) [283-607](#)
[284-691](#) [2909798](#) [264-724](#) [264-726](#) [280-530](#) [280-555](#) [280-619](#) [281-610](#) [281-622/281-417](#) [284-317](#) [284-601](#) [2907033](#) [35956](#) [USK 10](#)
[102510](#) [1025100000](#) [5520682](#) [591620-2](#) [1-591651-1](#) [8671050000](#) [264-706](#) [280-575](#) [592814-1](#) [592814-3](#) [UMSTBVK 2 5/ 5-STF-5 08](#)
[NRA37-12](#)