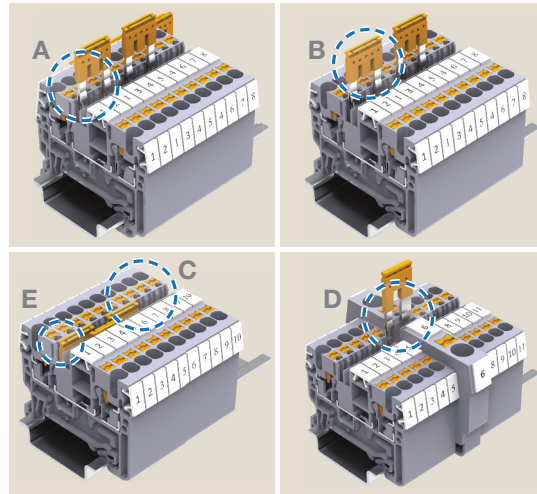


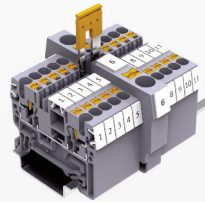
JUMPERS



Terminal Block Series	Cat. No.	Std. Pk.	Blue	Red
CP1.5 Series	JX1.5/2	100	JX1.5/2/BU	JX1.5/2/R
CPG1.5 Series	JX1.5/3	50	JX1.5/3/BU	JX1.5/3/R
CPDL1.5 Series	JX1.5/4	50	JX1.5/4/BU	JX1.5/5/R
CPST1.5 Series	JX1.5/10	10	JX1.5/10/BU	JX1.5/10/R
	JX2.5/2	100	—	—
	JX2.5/3	50	—	—
CP2.5 Series	JX2.5/4	50	—	—
CPG2.5 Series	JX2.5/5	50	—	—
CPDL2.5 Series	JX2.5/6	50	—	—
CPDLK2.5 Series	JX2.5/7	50	—	—
	JX2.5/8	50	—	—
	JX2.5/10	10	—	—
	JX4/2	100	—	—
	JX4/3	50	—	—
CP4 Series	JX4/4	50	—	—
CPG4 Series	JX4/8	50	—	—
	JX4/10	50	—	—
	JX4/16	50	—	—
	JX6/2	100	—	—
CP6/10 Series	JX6/3	50	—	—
CPG6/10 Series	JX6/4	50	—	—
	JX6/10	10	—	—
	CA801/A2	100	—	—
CP3L2.5 Series	CA801/A3	100	—	—
CP4LG2.5 Series	CA801/A5	100	—	—
	CA801/A10	10	—	—



- A Standardized in various pole configurations
- B Easy breakout pins to skip terminals
- C 2 jumper channels for various circuit options
- D Step down jumpers to short different wire size terminals
- E Felt-tip pen marking area



STEP DOWN JUMPERS

Used for jumpering terminal blocks of different sizes.

Jumper for	Cat. No.	Std. Pk.
CP6 to CP2.5	JXS6/2.5	50
CP4 to CP2.5	JXS4/2.5	50
CP6 to CP4	JXS6/4	50

ENDPLATES



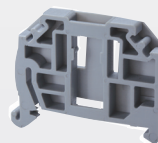
Terminal Block	Cat. No.	Dimensions	Std. Pk.
CP1.5 CPG1.5	EPCP1.5	26.35 x 45.3 x 1.5 mm	50
CP2.5 CPG2.5	EPCX2.5	30.5 x 49.7 x 1.5 mm	50
CP4 CPG4	EPCX4	30.5 x 54.8 x 1.5 mm	50
CP6/10 CPG6/10	EPCX6	35.3 x 62.1 x 1.5 mm	50
CP1.5/3 CPG1.5/3	EPCP1.5/3	26.35 x 54.4 x 1.5 mm	50
CP2.5/3 CPG2.5/3	EPCX2.5/3	30.5 x 62.2 x 1.5 mm	50
CP4/3 CPG4/3	EPCX4/3	30.5 x 70.5 x 1.5 mm	50
CP6/10/3 CPG6/10/3	EPCX6/3	35.3 x 82.2 x 1.5 mm	50
CPDL1.5 CPDLG1.5	EPCPDL1.5	37.5 x 67.2 x 1.5 mm	50
EPCX2.5 EPCXG2.5	EPCXDL2.5	41.8 x 72.7 x 1.5mm	50
CP3L2.5 CP3LG2.5	EPCP3L2.5	98.70 x 83 x 1.5 mm	50
CPDLK2.5	EPCPDLK2.5	107 x 38.1 x 1.5 mm	50
CPST1.5/3 CPPT2.5/3	EPCPPT2.5/3	96.5 x 40.3 x 1.5 mm	50
CPST1.5/4 CPPTG2.5/4	EPCPPT2.5/4	58.1 x 69.5 x 1.5 mm	50

PARTITION PLATES

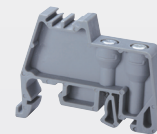


Terminal Block	Cat. No.	Dimensions	Std. Pk.
CP1.5, CP2.5, CP4, CPG1.5, CPG2.5, CPG4	PPCX4	42.4 x 59 x 2mm	50
CP6/10 CPG6/10	PPCX10	53.5 x 76 x 1mm	50
CP1.5/3, CP2.5/3, CP4/3, CPG1.5/3, CPG2.5/3, CPG4/3	PPCX4/3	42.4 x 47.7 x 2mm	50
CP1.5/4, CP2.5/4, CP4/4, CPG1.5/4, CPG2.5/4, CPG4/4	PPCX4/4	42.4 x 95 x 2mm	50

END STOPS



Screwless
Snap On



Cat. No.	Dimensions	Std. Pk.	Cat. No.	Dimensions	Std. Pk.
CA103	35 x 41 x 6mm	50	CA702	34 x 45 x 9mm	50
CA104	41 x 36 x 10mm	50			



Cat. No.	Dimensions	Std. Pk.
CA802	32 x 45 x 8mm	50

X-ON Electronics

Largest Supplier of Electrical and Electronic Components

Click to view similar products for [Terminal Block Tools & Accessories](#) category:

Click to view products by [Altech](#) manufacturer:

Other Similar products are found below :

[00171430102](#) [00171420102](#) [600HL](#) [600RJ-07](#) [600RJ-11](#) [600RJ-14](#) [600RJS-10](#) [600RJS-12](#) [600RJS-21](#) [601RJ-09](#) [602SP](#) [602Z](#) [604J](#)
[CSTSPC1-2](#) [7B941-7](#) [88943-2100](#) [QC102](#) [1437403-6](#) [1437403-9](#) [1437403-8](#) [1453128-1](#) [147832-1](#) [EC0037-000](#) [MT2/H--](#) [MT6/H-N](#)
[MT6/V-GRND](#) [MT8/H-51-60](#) [BC2-12](#) [BCC-1-8/10](#) [EP2.5/4UN/BG](#) [1707755](#) [1735590](#) [1755480](#) [1789281](#) [1840227](#) [1840230](#) [2-1437402-1](#)
[JA2-03](#) [JB1-03/J](#) [JB2-04](#) [JB2-05](#) [JB2-07](#) [JB2-09/J](#) [PARALLELJUMPERLINK](#) [JS601](#) [2204082](#) [2302463](#) [2305949](#) [8TK2-24](#) [8WA1853](#)