

NH KNIFE BLADE

NH fuses are typically used for power distribution applications and to protect large electrical devices such as motors, drives, etc. They are available in seven sizes with a current range of 2 to 1600 Amps.

NH fuses have knife blades at both ends, which mount into Fuse Bases. Fuse Bases are available in one or three pole designs and can be panel or DIN rail mounted.

Please refer to pg 19 for NH Fuse Accessories.

Operating Classes

gL/gG - Line Protection

Slow, typically used for distribution circuits or resistive loads.

Typical Marking: gL/gG



aM - Motor Protection

Fast acting short circuit protection, but slow acting overload protection.

Typical Marking: aM
Green imprint.

aR - Semiconductor Protection

Partial range, short circuit protection for devices such as diodes, SCRs, etc.

Typical Markings: Ultra Rapid™, Sitor™, Silcu™, Protistor™, Reticur™, Ultra Quick™, aR,

gR - Semiconductor Protection

Full range overload and short circuit protection for devices such as diodes, SCRs, etc.

Typical Markings: Ultra Rapid™, Sitor™, Silcu™, Protistor™, Reticur™, Ultra Quick™, gR,
Mostly red, orange or blue imprint.



NH00 (NHC00)³

Ordering Information

Operating Class gL / gG
(VDE 0636 / IEC 269)
Line Protection up to 500V AC
(660V available)

| Current/Voltage | Cat. No. | Dim. | Std. Pk. |
|-----------------|-----------|------|----------|
| 2/500V AC | 2NH00GL | A | 3 |
| 4/500V AC | 4NH00GL | A | 3 |
| 6/500V AC | 6NH00GL | A | 3 |
| 10/500V AC | 10NH00GL | A | 3 |
| 16/500V AC | 16NH00GL | A | 3 |
| 20/500V AC | 20NH00GL | A | 3 |
| 25/500V AC | 25NH00GL | A | 3 |
| 32/500V AC | 32NH00GL | A | 3 |
| 35/500V AC | 35NH00GL | A | 3 |
| 40/500V AC | 40NH00GL | A | 3 |
| 50/500V AC | 50NH00GL | A | 3 |
| 63/500V AC | 63NH00GL | A | 3 |
| 80/500V AC | 80NH00GL | A | 3 |
| 100/500V AC | 100NH00GL | A | 3 |
| 125/500V AC | 125NH00GL | A | 3 |
| 160/500V AC | 160NH00GL | A | 3 |

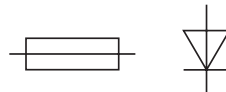
NH00 Fuses Operating Class gL / gG are available in 660V, and with insulated tags.

Operating Class aM
(VDE 0636 / IEC 269)
Motor Protection up to 660V AC

| | | | |
|-------------|-------------|---|---|
| 2/660V AC | 2NH00AM-6 | A | 3 |
| 4/660V AC | 4NH00AM-6 | A | 3 |
| 6/660V AC | 6NH00AM-6 | A | 3 |
| 10/660V AC | 10NH00AM-6 | A | 3 |
| 16/660V AC | 16NH00AM-6 | A | 3 |
| 20/660V AC | 20NH00AM-6 | A | 3 |
| 25/660V AC | 25NH00AM-6 | A | 3 |
| 32/660V AC | 32NH00AM-6 | A | 3 |
| 35/660V AC | 35NH00AM-6 | A | 3 |
| 40/660V AC | 40NH00AM-6 | A | 3 |
| 50/660V AC | 50NH00AM-6 | A | 3 |
| 63/660V AC | 63NH00AM-6 | A | 3 |
| 80/660V AC | 80NH00AM-6 | A | 3 |
| 100/660V AC | 100NH00AM-6 | A | 3 |
| 125/500V AC | 125NH00AM | A | 3 |
| 160/500V AC | 160NH00AM | A | 3 |

Super Fast Blow Operating Class aR / gR
(VDE 0636 / IEC 269)
Semiconductor Protection up to 660V AC
(1000V available)

| | | | |
|-------------|--------------------------|---|---|
| 16/660V AC | 16NH00GR-6 ¹ | A | 3 |
| 20/660V AC | 20NH00GR-6 ¹ | A | 3 |
| 25/660V AC | 25NH00GR-6 ¹ | A | 3 |
| 32/660V AC | 32NH00GR-6 ¹ | A | 3 |
| 35/660V AC | 35NH00GR-6 ¹ | A | 3 |
| 40/660V AC | 40NH00GR-6 ¹ | A | 3 |
| 50/660V AC | 50NH00GR-6 ¹ | A | 3 |
| 63/660V AC | 63NH00GR-6 ¹ | A | 3 |
| 80/660V AC | 80NH00GR-6 ¹ | A | 3 |
| 100/660V AC | 100NH00GR-6 ¹ | A | 3 |
| 125/660V AC | 125NH00GR-6 ¹ | A | 3 |
| 160/660V AC | 160NH00AR-6 | A | 3 |

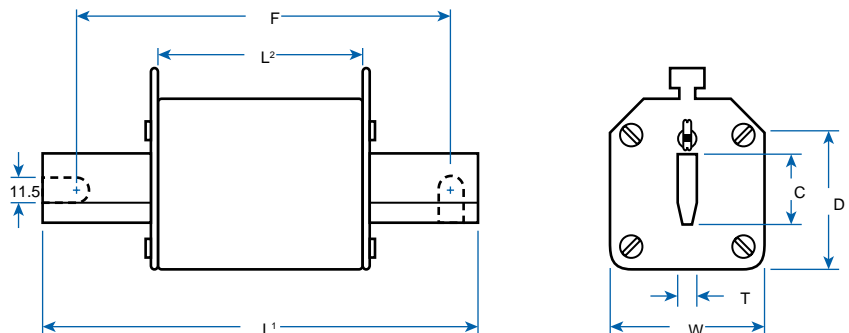


¹ Also available in Operating Class aR.

² Also available in 1000V. Designate suffix "-1" (ex. 32NH0GR-1).

³ Size NHC00 will be supplied in place of NH00 at manufacturer discretion.

⁴ Knife blade is available with screw holes, please designate a "B" after the size, (ex. 250NH3BAR-6).





NHO



NH1



NH2

| Current/ Voltage | Cat. No. | Dim. | Std. Pk. | Current/ Voltage | Cat. No. | Dim. | Std. Pk. | Current/ Voltage | Cat. No. | Dim. | Std. Pk. |
|--------------------------|------------|------|----------|--------------------------|-------------------------|------|----------|---------------------|-------------------------|------|----------|
| 10/500V AC | 10NH0GL | B | 3 | 16/500V AC | 16NH1GL | C | 3 | 35/500V AC | 35NH2GL | E | 3 |
| 16/500V AC | 16NH0GL | B | 3 | 20/500V AC | 20NH1GL | C | 3 | 40/500V AC | 40NH2GL | E | 3 |
| 20/500V AC | 20NH0GL | B | 3 | 25/500V AC | 25NH1GL | C | 3 | 50/500V AC | 50NH2GL | E | 3 |
| 25/500V AC | 25NH0GL | B | 3 | 32/500V AC | 32NH1GL | C | 3 | 63/500V AC | 63NH2GL | E | 3 |
| 32/500V AC | 32NH0GL | B | 3 | 35/500V AC | 35NH1GL | C | 3 | 80/500V AC | 80NH2GL | E | 3 |
| 35/500V AC | 35NH0GL | B | 3 | 40/500V AC | 40NH1GL | C | 3 | 100/500V AC | 100NH2GL | E | 3 |
| 40/500V AC | 40NH0GL | B | 3 | 50/500V AC | 50NH1GL | C | 3 | 125/500V AC | 125NH2GL | E | 3 |
| 50/500V AC | 50NH0GL | B | 3 | 63/500V AC | 63NH1GL | C | 3 | 160/500V AC | 160NH2GL | E | 3 |
| 63/500V AC | 63NH0GL | B | 3 | 80/500V AC | 80NH1GL | C | 3 | 200/500V AC | 200NH2GL | E | 3 |
| 80/500V AC | 80NH0GL | B | 3 | 100/500V AC | 100NH1GL | C | 3 | 224/500V AC | 224NH2GL | E | 3 |
| 100/500V AC | 100NH0GL | B | 3 | 125/500V AC | 125NH1GL | C | 3 | 250/500V AC | 250NH2GL | E | 3 |
| 125/500V AC | 125NH0GL | B | 3 | 160/500V AC | 160NH1GL | C | 3 | 300/500V AC | 300NH2GL | E | 3 |
| 160/500V AC | 160NH0GL | B | 3 | 200/500V AC | 200NH1GL | D | 3 | 315/500V AC | 315NH2GL | F | 3 |
| 200/500V AC | 200NH0GL | B | 3 | 224/500V AC | 224NH1GL | D | 3 | 355/500V AC | 355NH2GL | F | 3 |
| | | | | 250/500V AC | 250NH1GL | D | 3 | 400/500V AC | 400NH2GL | F | 3 |
| | | | | | | | | 425/500V AC | 425NH2GL | F | 3 |
| 10/500V AC | 10NH0AM | B | 3 | 16/500V AC | 16NH1AM | C | 3 | 35/500V AC | 35NH2AM | E | 3 |
| 16/500V AC | 16NH0AM | B | 3 | 20/500V AC | 20NH1AM | C | 3 | 40/500V AC | 40NH2AM | E | 3 |
| 20/500V AC | 20NH0AM | B | 3 | 25/500V AC | 25NH1AM | C | 3 | 50/500V AC | 50NH2AM | E | 3 |
| 25/500V AC | 25NH0AM | B | 3 | 32/500V AC | 32NH1AM | C | 3 | 63/500V AC | 63NH2AM | E | 3 |
| 32/500V AC | 32NH0AM | B | 3 | 35/500V AC | 35NH1AM | C | 3 | 80/500V AC | 80NH2AM | E | 3 |
| 35/500V AC | 35NH0AM | B | 3 | 40/500V AC | 40NH1AM | C | 3 | 100/500V AC | 100NH2AM | E | 3 |
| 40/500V AC | 40NH0AM | B | 3 | 50/500V AC | 50NH1AM | C | 3 | 125/500V AC | 125NH2AM | E | 3 |
| 50/500V AC | 50NH0AM | B | 3 | 63/500V AC | 63NH1AM | C | 3 | 160/500V AC | 160NH2AM | E | 3 |
| 63/500V AC | 63NH0AM | B | 3 | 80/500V AC | 80NH1AM | C | 3 | 200/500V AC | 200NH2AM | E | 3 |
| 80/500V AC | 80NH0AM | B | 3 | 100/500V AC | 100NH1AM | C | 3 | 224/500V AC | 224NH2AM | E | 3 |
| 100/500V AC | 100NH0AM | B | 3 | 125/500V AC | 125NH1AM | C | 3 | 250/500V AC | 250NH2AM | E | 3 |
| 125/500V AC | 125NH0AM | B | 3 | 160/500V AC | 160NH1AM | C | 3 | 315/500V AC | 315NH2AM | F | 3 |
| 160/500V AC | 160NH0AM | B | 3 | 200/500V AC | 200NH1AM | D | 3 | 355/500V AC | 355NH2AM | F | 3 |
| | | | | 224/500V AC | 224NH1AM | D | 3 | 400/500V AC | 400NH2AM | F | 3 |
| | | | | 250/500V AC | 250NH1AM | D | 3 | | | | |
| 16/660V AC | 16NH0GR-6 | B | 3 | 16/660V AC | 16NH1GR-6 | C | 3 | 32/660V AC | 32NH2GR-6 | E | 3 |
| 20/660V AC | 20NH0GR-6 | B | 3 | 20/660V AC | 20NH1GR-6 | C | 3 | 40/660V AC | 40NH2GR-6 | E | 3 |
| 25/660V AC | 25NH0GR-6 | B | 3 | 25/660V AC ² | 25NH1GR-6 ⁴ | C | 3 | 50/660V AC | 50NH2GR-6 | E | 3 |
| 32/660V AC ² | 32NH0GR-6 | B | 3 | 32/660V AC ² | 32NH1GR-6 ⁴ | C | 3 | 63/660V AC | 63NH2GR-6 | E | 3 |
| 40/660V AC ² | 40NH0GR-6 | B | 3 | 35/660V AC ² | 35NH1GR-6 ⁴ | C | 3 | 80/660V AC | 80NH2GR-6 ⁴ | E | 3 |
| 50/660V AC ² | 50NH0GR-6 | B | 3 | 40/660V AC ² | 40NH1GR-6 ⁴ | C | 3 | 100/660V AC | 100NH2GR-6 ⁴ | E | 3 |
| 63/660V AC ² | 63NH0GR-6 | B | 3 | 50/660V AC ² | 50NH1GR-6 ⁴ | C | 3 | 125/660V AC | 125NH2GR-6 ⁴ | E | 3 |
| 80/660V AC ² | 80NH0GR-6 | B | 3 | 63/660V AC ² | 63NH1GR-6 ⁴ | C | 3 | 160/660V AC | 160NH2AR-6 ⁴ | E | 3 |
| 100/660V AC ² | 100NH0GR-6 | B | 3 | 80/660V AC ² | 80NH1GR-6 ⁴ | C | 3 | 200/660V AC | 200NH2AR-6 ⁴ | E | 3 |
| 125/660V AC ² | 125NH0GR-6 | B | 3 | 100/660V AC ² | 100NH1GR-6 ⁴ | C | 3 | 250/660V AC | 250NH2AR-6 ⁴ | E | 3 |
| 160/660V AC ² | 160NH0AR-6 | B | 3 | 125/660V AC ² | 125NH1GR-6 ⁴ | C | 3 | 280/660V AC | 280NH2AR-6 ⁴ | E | 3 |
| | | | | 160/660V AC ² | 160NH1AR-6 ⁴ | C | 3 | 315/660V AC | 315NH2AR-6 ⁴ | F | 3 |
| | | | | 200/660V AC ² | 200NH1AR-6 ⁴ | D | 3 | 355/660V AC | 355NH2AR-6 ⁴ | E | 3 |
| | | | | 224/660V AC ² | 224NH1AR-6 ⁴ | D | 3 | 400/660V AC | 400NH2AR-6 ⁴ | F | 3 |
| | | | | 250/660V AC ² | 250NH1AR-6 ⁴ | D | 3 | | | | |
| | | | | 315/500V AC | 315NH1AR | D | 3 | | | | |

Approximate Dimensions for NH Fuses mm (in.)*

| NH Size/Dim. | Overall Length (L ₁) | Body Length (L ₂) | Body Depth (D) | Body Width (W) | Blade Width (T) | Blade Thickness (C) | Fixing Center (F) |
|--------------|----------------------------------|-------------------------------|----------------|----------------|-----------------|---------------------|-------------------|
| C00 | 79(3.11) | 53 (2.09) | 40 (1.57) | 21 (0.83) | 6 (0.24) | 15 (0.59) | 110 (4.33) |
| 00/A | 79(3.11) | 52 (2.05) | 42.5 (1.67) | 28 (1.10) | 6 (0.24) | 15 (0.59) | 110 (4.33) |
| 0/B | 125 (4.92) | 65 (2.56) | 42 (1.65) | 29 (1.14) | 6 (0.24) | 15 (0.59) | 110 (4.33) |
| 1/C | 135 (5.31) | 65 (2.56) | 42 (1.65) | 29 (1.14) | 6 (0.24) | 15 (0.59) | 110 (4.33) |
| 1/D | 135 (5.31) | 65 (2.56) | 48 (1.89) | 40 (1.57) | 6 (0.24) | 20 (0.79) | 110 (4.33) |
| 2/E | 150 (5.91) | 65 (2.56) | 48 (1.89) | 40 (1.57) | 6 (0.24) | 20 (0.79) | 110 (4.33) |
| 2/F | 150 (5.91) | 65 (2.56) | 60 (2.36) | 53 (2.10) | 6 (0.24) | 26 (1.02) | 110 (4.33) |

*Dimensions to DIN 43620 refer to diagram on pg 16

NH FUSE ACCESSORIES

FUSE BASE

Fuse Bases hold fuses in place and insure proper electrical connections. Available in one or three pole designs. Three-pole Fuse Bases are supplied with two Separator Plates which should be installed between poles. We recommend the use of End Plates and Terminal Covers for increased safety.

END PLATE

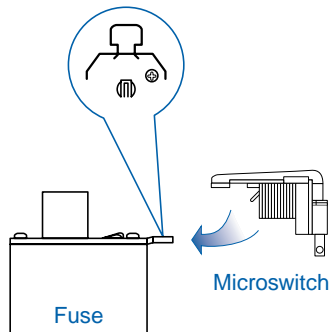
End Plates increase safety and provide separation between devices. Install by inserting End Plate into mounting entry slot on right or left side of Fuse Base. We recommend installing one End Plate on each side of the Fuse Base.

TERMINAL COVER

Covers increase safety by covering the conducting metal hardware of the Fuse Base and the Fuse. We suggest Terminal Covers be used in conjunction with End Plates. To install slide Terminal Cover over terminal slot and snap in place.

MICROSWITCH

Microswitches can be field mounted on NH fuses for remote blown fuse indication. (Sketch below)



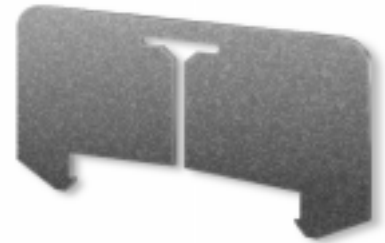
FUSE HANDLE

We strongly suggest using the Fuse Handle when inserting or removing fuses from the Fuse Base to prevent electrical shocks. For increased safety, use Fuse Handle with integral safety glove. Both Fuse Handles are for use with NH-Knife Blade Fuses, NH00 - NH4.



Fuse Base

| No. of Poles | Cat. No. | Length mm (in.) | Use With Fuse(s) |
|--------------|----------------|-----------------|------------------|
| 1 | NHB00-1 | 122 (4.80) | NH00 |
| 3 | NHB00-3 | 139 (5.47) | NH00 |
| 1 | NHB0-1 | 170 (6.69) | NH0 |
| 1 | NHB1-1 | 202 (7.95) | NH1 |
| 3 | NHB1-3 | 214 (8.42) | NH1 |
| 1 | NHB2-1 | 227 (8.94) | NH2 |
| 3 | NHB2-3 | 260 (10.24) | NH2 |
| 1 | NHB3-1 | 242 (9.53) | NH3 |
| 1 | NHB4-1 | 310 (12.20) | NH4 |
| 1 | NHB4A-1 | 338 (13.31) | NH4A |
| 1 | NHSMB | 146 (5.75) | NH00SM |



Fuse End Plate

| Cat. No. | Approx. Dim. mm (in.) | Use With Fuse Base(s) |
|---------------|-----------------------|-----------------------|
| | Width Length | |
| NHEP00 | 62 (2.44) 121 (4.76) | NHB00-1-3 |
| NHEP0 | 62 (2.44) 180 (7.09) | NHB0-1-3 |
| NHEP1 | 62 (2.44) 214 (8.42) | NHB1-1-3 |
| NHEP2 | 90 (3.54) 260 (10.24) | NHB2-1-3 |
| NHEP3 | 101 (3.98) 242 (9.53) | NHB3-1-3 |



Microswitch

| Cat. No. | Current/Voltage | Use With Fuse(s) |
|-------------|------------------|---|
| NHMS | 5/250V AC (SPDT) | NH Knife Blade or NH Stud Mount (All Sizes) |



Terminal Cover

| Cat. No. | Use With Fuse Base(s) |
|---------------|-----------------------|
| NHTC00 | NHB00-1-3 |



Fuse Handle

| Cat. No. | Description |
|-------------|-------------------------------|
| NHHA | Fuse Handle |
| NHSG | Fuse Handle with Safety Glove |

For maximum protection use Fuse Handle with integral safety glove, not shown.

NH STUD MOUNT Semiconductor

Semiconductor Fuses have extremely fast acting trip characteristics and provide short circuit and overload protection for diodes, SCR's etc. Current limiting, super fast blow.

Semiconductor Fuses offered comply with IEC, DIN and VDE standards and are available in two trip characteristics, defined below.

For Accessories, please refer to pg 19 for NH Fuses.

Operating Classes (VDE 0636 / IEC 269)

gR - Full Range Protection

Overload and short circuit protection.

Typical Markings: Ultra Rapid™, Silcu™, Recticur™, Protistor™, Ultra Quick™, gR

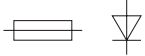


Mostly red, orange, or blue imprint.

aR - Partial Range Protection

Short circuit protection only. Faster acting than full range fuses.

Typical Markings: Ultra Rapid™, Silcu™, Recticur™, Protistor™, Ultra Quick™, aR



Mostly red, orange, or blue imprint.



NH00C/SM
Stud Mount



NH00C/SM-L
Stud Mount with
Microswitch Holder

Class gR

| Current/ Voltage | Cat. No. | Std. Pk. |
|--------------------------|------------|----------|
| 16/660V AC | 16SM00CGR | 3 |
| 20/660V AC | 20SM00CGR | 3 |
| 25/660V AC | 25SM00CGR | 3 |
| 32/660V AC | 32SM00CGR | 3 |
| 40/660V AC ¹ | 40SM00CGR | 3 |
| 50/660V AC ¹ | 50SM00CGR | 3 |
| 63/660V AC ¹ | 63SM00CGR | 3 |
| 80/660V AC ¹ | 80SM00CGR | 3 |
| 100/660V AC ¹ | 100SM00CGR | 3 |
| 125/660V AC ¹ | 125SM00CGR | 3 |

Class gR

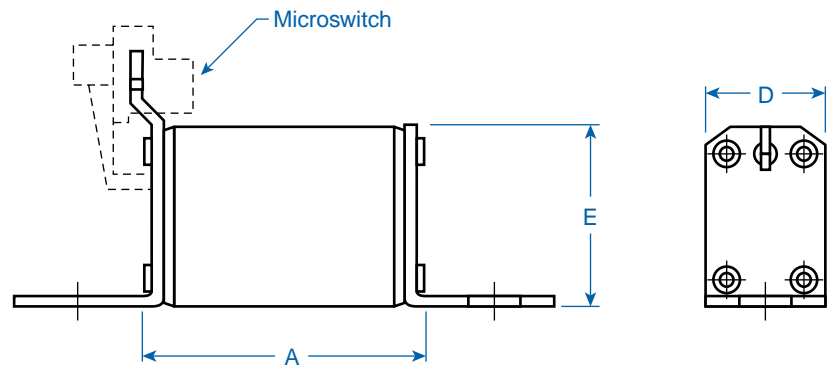
| Current/ Voltage | Cat. No. | Std. Pk. |
|---------------------|--------------|----------|
| 16/660V AC | 16SM00CGR-L | 3 |
| 20/660V AC | 20SM00CGR-L | 3 |
| 25/660V AC | 25SM00CGR-L | 3 |
| 32/660V AC | 32SM00CGR-L | 3 |
| 35/660V AC | 35SM00CGR-L | 3 |
| 40/660V AC | 40SM00CGR-L | 3 |
| 50/660V AC | 50SM00CGR-L | 3 |
| 63/660V AC | 63SM00CGR-L | 3 |
| 80/660V AC | 80SM00CGR-L | 3 |
| 100/660V AC | 100SM00CGR-L | 3 |
| 125/660V AC | 125SM00CGR-L | 3 |

Class aR

| Current/ Voltage | Cat. No. | Std. Pk. |
|--------------------------|------------|----------|
| 160/660V AC ¹ | 160SM00CAR | 3 |
| 200/660V AC ¹ | 200SM00CAR | 3 |
| 250/660V AC ¹ | 250SM00CAR | 3 |
| 315/500V AC ¹ | 315SM00CAR | 3 |

Class aR

| Current/ Voltage | Cat. No. | Std. Pk. |
|---------------------|--------------|----------|
| 160/660V AC | 160SM00CAR-L | 3 |
| 180/660V AC | 180SM00CAR-L | 3 |



¹ UL recognized version available upon request. UL rated at 700VAC.

² Also available in operating class aR.



NH00/SM
Stud Mount

Class gR

| Current/ Voltage | Cat. No. | Std. Pk. |
|--------------------------|-----------|----------|
| 16/660V AC ² | 16SM00GR | 3 |
| 20/660V AC ² | 20SM00GR | 3 |
| 25/660V AC ² | 25SM00GR | 3 |
| 32/660V AC ² | 32SM00GR | 3 |
| 35/660V AC ² | 35SM00GR | 3 |
| 40/660V AC ² | 40SM00GR | 3 |
| 50/660V AC ² | 50SM00GR | 3 |
| 63/660V AC ² | 63SM00GR | 3 |
| 80/660V AC ² | 80SM00GR | 3 |
| 100/660V AC ² | 100SM00GR | 3 |
| 125/660V AC ² | 125SM00GR | 3 |

Class aR

| | | |
|--------------------------|-----------|---|
| 160/660V AC ¹ | 160SM00AR | 3 |
| 200/660V AC ¹ | 200SM00AR | 3 |
| 250/660V AC ¹ | 250SM00AR | 3 |
| 315/660V AC ¹ | 315SM00AR | 3 |
| 350/660V AC ¹ | 350SM00AR | 3 |
| 400/660V AC | 400SM00AR | 3 |



NH00/SM-L
Stud Mount with
Microswitch Holder

Class gR

| Current/ Voltage | Cat. No. | Std. Pk. |
|--------------------------|-------------|----------|
| 6/660V AC ² | 6SM00GR-L | 3 |
| 10/660V AC ² | 10SM00GR-L | 3 |
| 16/660V AC ² | 16SM00GR-L | 3 |
| 20/660V AC ² | 20SM00GR-L | 3 |
| 25/660V AC ² | 25SM00GR-L | 3 |
| 32/660V AC ² | 32SM00GR-L | 3 |
| 35/660V AC ² | 35SM00GR-L | 3 |
| 40/660V AC ² | 40SM00GR-L | 3 |
| 50/660V AC ² | 50SM00GR-L | 3 |
| 63/660V AC ² | 63SM00GR-L | 3 |
| 80/660V AC ² | 80SM00GR-L | 3 |
| 100/660V AC ² | 100SM00GR-L | 3 |
| 125/660V AC ² | 125SM00GR-L | 3 |

Class aR

| | | |
|-------------|-------------|---|
| 160/660V AC | 160SM00AR-L | 3 |
| 200/660V AC | 200SM00AR-L | 3 |
| 250/660V AC | 250SM00AR-L | 3 |
| 315/660V AC | 315SM00AR-L | 3 |
| 350/660V AC | 350SM00AR-L | 3 |
| 400/660V AC | 400SM00AR-L | 3 |



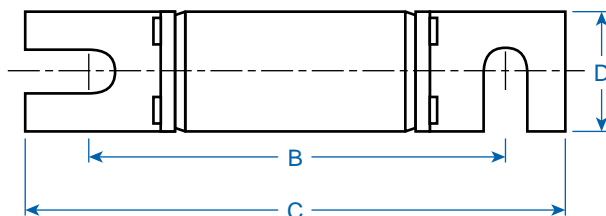
NH0/SM-L
Stud Mount with
Microswitch Holder

Class gR

| Current/ Voltage | Cat. No. | Std. Pk. |
|---------------------|------------|----------|
| 6/660V AC | 6SM0GR-L | 3 |
| 10/660V AC | 10SM0GR-L | 3 |
| 16/660V AC | 16SM0GR-L | 3 |
| 20/660V AC | 20SM0GR-L | 3 |
| 25/660V AC | 25SM0GR-L | 3 |
| 32/660V AC | 32SM0GR-L | 3 |
| 35/660V AC | 35SM0GR-L | 3 |
| 40/660V AC | 40SM0GR-L | 3 |
| 50/660V AC | 50SM0GR-L | 3 |
| 63/660V AC | 63SM0GR-L | 3 |
| 80/660V AC | 80SM0GR-L | 3 |
| 100/660V AC | 100SM0GR-L | 3 |
| 125/660V AC | 125SM0GR-L | 3 |

Class aR

| | | |
|-------------|------------|---|
| 160/660V AC | 160SM0AR-L | 3 |
|-------------|------------|---|



**Approximate Dimensions
Stud Mount mm (in.)***

| Dim. | NHC00 | NH00 | NH0 |
|------|------------|------------|------------|
| A | 55 (2.17) | 55 (2.17) | 69 (2.72) |
| B | 80 (3.15) | 80 (3.15) | 97 (3.82) |
| C | 100 (3.94) | 100 (3.94) | 120 (4.72) |
| D | 20 (0.79) | 28 (1.10) | 28 (1.10) |
| E | 39 (1.54) | 50 (1.97) | 50 (1.97) |

*Dimensions to DIN 43653

X-ON Electronics

Largest Supplier of Electrical and Electronic Components

Click to view similar products for [Fuse Holder](#) category:

Click to view products by [Altech](#) manufacturer:

Other Similar products are found below :

[570-290-741P40](#) [570-290-751P40](#) [020417G](#) [020418E](#) [6R30A1B](#) [F600A3B](#) [80910030](#) [8601.2020](#) [G15A2SPQ](#) [9-3557-GP REV A](#) [HDJ-B](#)
[R6J30A3S](#) [HFH-1](#) [RF30A2B](#) [RF30A3SP](#) [15600-08-10](#) [BK/FHN19G](#) [BK/HHM](#) [BK/HKP-CCHH](#) [BK/HKP-JJ](#) [BK/HTJ-LES-FUSE](#) [HMG-](#)
[241](#) [HTJ-LES-FUSE](#) [C4044-1](#) [2086-1](#) [2193](#) [2602](#) [2650](#) [178.000100](#) [FHN31G1](#) [T30A2B](#) [G4PB8](#) [2660](#) [2799](#) [CQ-209V](#) [HKP-CCHH](#)
[R6F30A2S](#) [341001A](#) [345621A](#) [CVRMCC](#) [4202](#) [4407](#) [4408](#) [4413](#) [4423](#) [4532](#) [4537](#) [TSD1404-12](#) [BK/FHN31G1](#) [BK/HC-5](#)