

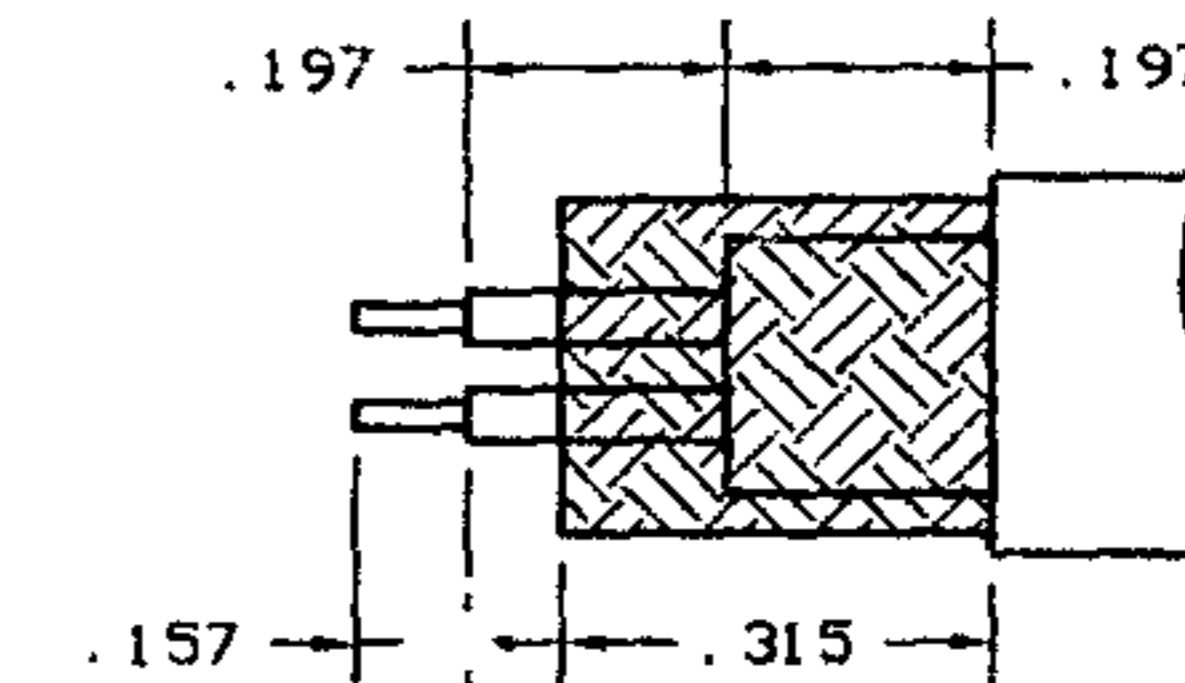
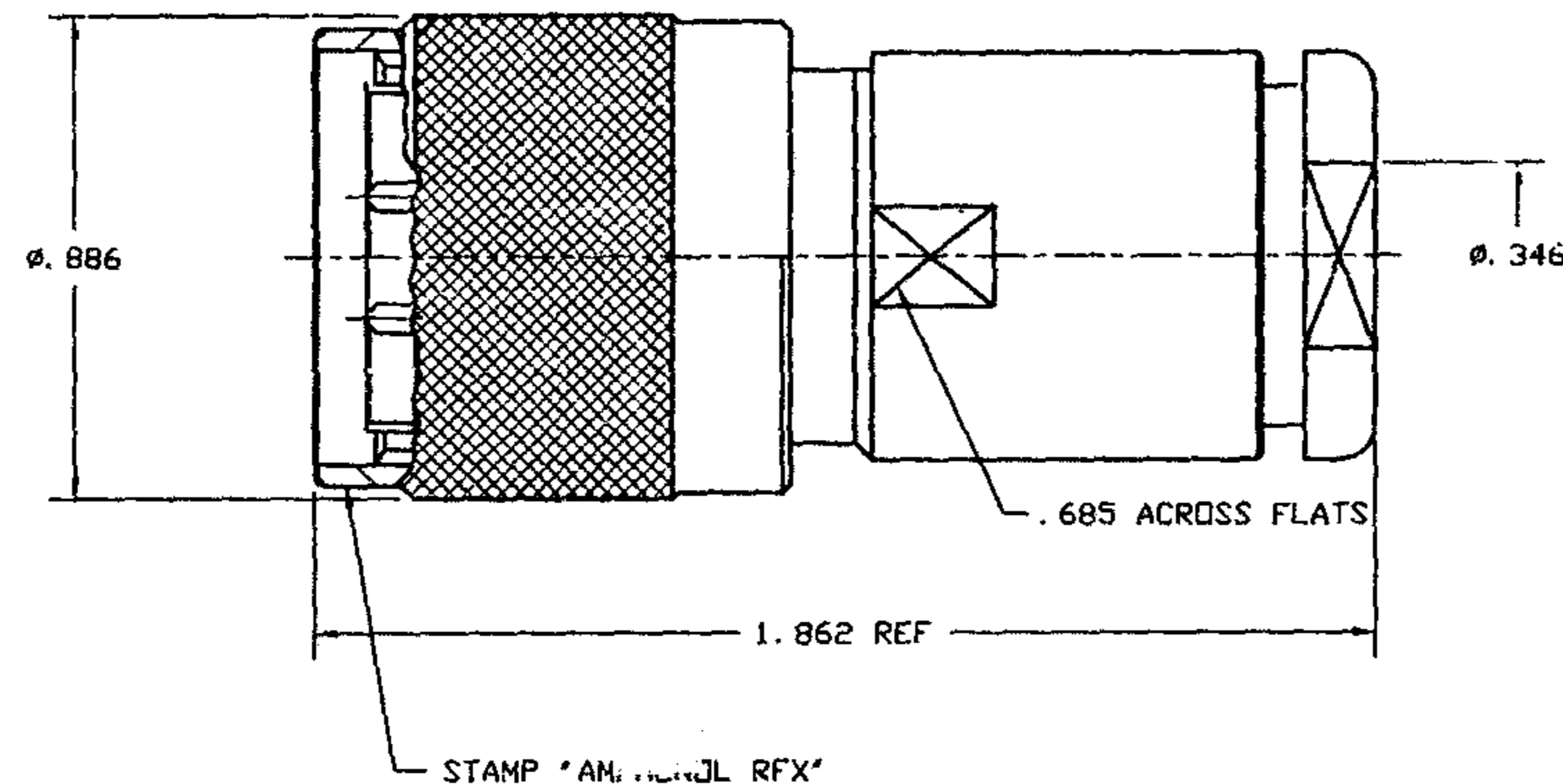
NOTES:

- MATERIALS OF CONSTRUCTION:
 PIN, NUT, BRAID CLAMP, TOP HAT, BRASS / NICKEL PL.
 RETAINER RING, BODY, SHELL
 CONTACT PIN BRASS / GOLD PL.
 WASHER BRASS / NICKEL PL.
 GASKETS SILICONE RUBBER / RED
 INSULATOR PBT / WHITE
- DO NOT SCALE THIS DRAWING.
- UNLESS OTHERWISE SPECIFIED, ALL DIMENSIONS ARE AFTER PLATING.
- FOR STRIPPING & ASSEMBLY INSTRUCTIONS SEE AMPHENOL SPEC. 349-50384.

82-5589-RFX

REVISIONS

DRAWING NO.	REV	DESCRIPTION	DATE	ECO	APPR
THIRD ANGLE PROJ.	A	RELEASE TO MFG.	5/13/98	42488	JB/DR
	D	CORRECTED REV LEVEL	5/20/98	42499	CPM/DR
	E	SEE SHEET 2 FOR REVISIONS	9/23/98	42636	CPM/



RECOMMENDED
CABLE STRIPPING DIM'S

Customer Outline Drawing

UNLESS OTHERWISE SPECIFIED, DIMENSIONS ARE IN INCHES AND TOLERANCES ARE:
 2 PLACE DECIMAL ±.015 (0,381 mm)
 3 PLACE DECIMAL ±.005 (0,127 mm)
 ANGLES ± 1°

NOTICE - These drawings, specifications, or other data (1) are, and remain the property of Amphenol Corp. (2) must be returned upon request; and (3) are confidential and not to be disclosed to any person other than those to whom they are given by Amphenol Corp. The furnishing of these drawings, specifications, or other data by Amphenol Corp., or to any other person to anyone for any purpose is not to be regarded by implication or otherwise in any manner licensing, granting rights or permitting such holder or any other person to manufacture, use or sell any product, process or design, patented or otherwise, that may in any way be related to or disclosed by said drawings, specifications, or other data.

MATERIAL

 REFERENCE
 EAR 9669770-61

DRAWN	J. BOERS	DATE	5/12/98
ENGINEER	D. ROYCE	DATE	3/17/89
APPROVED	D. ROYCE	DATE	5/13/98

TITLE
 TWINAX CLAMP PLUG
 FOR BELDEN
 9207 CABLE

Amphenol
 Amphenol Corporation
 RF/Microwave Operations
 Danbury, Conn. U. S. A. 06810

CAD FILE	H:\DEPT611\TWINAX\082\ASSY\5589\RFXSHT1	CODE ID	74368	DWG SIZE	B	DRAWING NO.	82-5589-RFX	REV	E
----------	---	---------	-------	----------	---	-------------	-------------	-----	---

SCALE: 2:1 SHEET 1 OF 2

X-ON Electronics

Largest Supplier of Electrical and Electronic Components

Click to view similar products for [RF Connectors / Coaxial Connectors](#) category:

Click to view products by [Amphenol](#) manufacturer:

Other Similar products are found below :

[R125315120](#) [8915-1511-000](#) [89674-0827](#) [5916-1103-603](#) [6-0001-3](#) [6001-7071-019](#) [6002-7051-003](#) [6002-7551-202](#) [6059674-1](#) [619550-1](#)
[630059-000](#) [M39012/25-0021](#) [M39012/79-3008](#) [M39030/3-01N](#) [M39030/3-03N](#) [M3933/25-36N](#) [6500-7071-046](#) [M83723/72W24576](#)
[M83723/72W2457N](#) [6769](#) [CX050L2AQ](#) [7002-1541-010](#) [7002-1572-002](#) [7003-1572-002](#) [7010-1511-000](#) [7029-1511-060](#) [7101-1541-010](#)
[7101-1571-002](#) [7105-1521-002](#) [7145-1521-002](#) [7209-1511-011](#) [7210-1511-015](#) [7210-1511-019](#) [7225-1512-050](#) [7242-1511-000](#) [73137-5015](#)
[73251-0111](#) [73251-0672](#) [7325-1512-000](#) [73276-1501](#) [73366-0013](#) [73404-2300](#) [73413-6080](#) [73415-5721](#) [7405-1521-005](#) [7405-1521-802](#)
[7406-1521-005](#) [804S01D04M040](#) [8145-1521-002](#) [81590](#)