

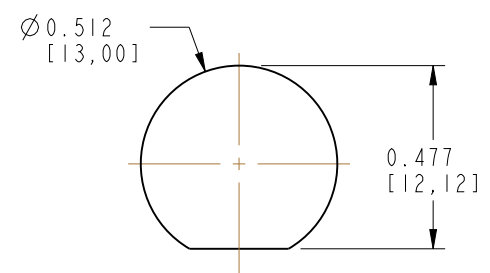
NOTES:

- MATERIALS AND FINISHES:  
 BNC STR BHD JACK - BRASS, NICKLE PLATING  
 SMA STR PLUG - BRASS, GOLD PLATING  
 CABLE - RG 58
- ELECTRICAL:  
 A. IMPEDANCE: 50 OHM
- PACKAGING:  
 A. QUANTITY: SINGLE PACK  
 B. MARKING: BAG TO BE MARKED  
 "AMPHENOL RF, 95-850-246-XXX AND DATE CODE".

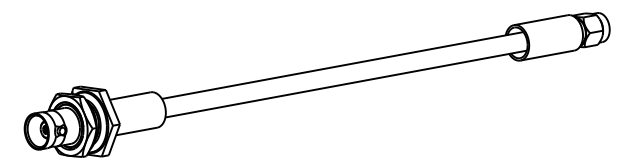
THIRD ANGLE PROJ.

REVISIONS

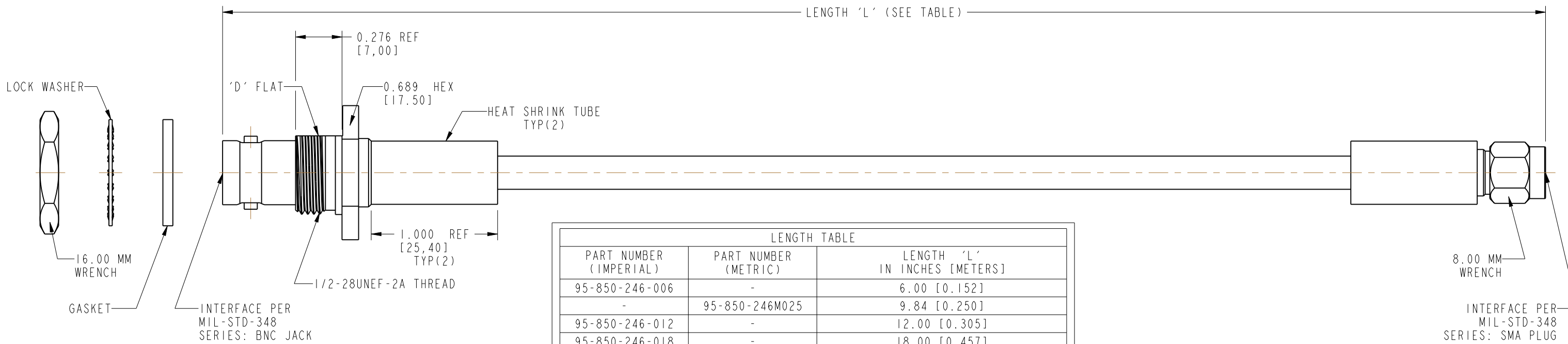
REV	DESCRIPTION	DATE	ECO	APPR
A	RELEASE TO MFG.	27-Jan-20	14301	SKP



RECOMMENDED MOUNTING HOLE DIMENSIONS



SCALE 0.500



LENGTH TABLE		
PART NUMBER (IMPERIAL)	PART NUMBER (METRIC)	LENGTH 'L' IN INCHES [METERS]
95-850-246-006	-	6.00 [0.152]
-	95-850-246M025	9.84 [0.250]
95-850-246-012	-	12.00 [0.305]
95-850-246-018	-	18.00 [0.457]
-	95-850-246M050	19.69 [0.500]
95-850-246-024	-	24.00 [0.610]
-	95-850-246M075	29.53 [0.750]
95-850-246-036	-	36.00 [0.914]
-	95-850-246M100	39.37 [1.000]
95-850-246-048	-	48.00 [1.219]
-	95-850-246M150	59.06 [1.500]
95-850-246-060	-	60.00 [1.524]
-	95-850-246M200	78.74 [2.000]
95-850-246-084	-	84.00 [2.134]
95-850-246-096	-	96.00 [2.438]
-	95-850-246M300	118.11 [3.000]
95-850-246-120	-	120.00 [3.048]
95-850-246-144	-	144.00 [3.658]
-	95-850-246M400	157.48 [4.000]

TOLERANCE TABLE	
LENGTH IN INCHES/FT [METERS]	TOLERANCE
0" - 23.90" [0 - 0.607]	±0.25" [0.006]
24.00" - 59.00" [0.610 - 1.499]	±0.50" [0.013]
5.0' - 24.9' [1.524 - 7.617]	±2.5%
25.0' & UP [7.620 & UP]	±5.0%

DESIGN REQUIREMENTS:

<input checked="" type="checkbox"/> FREQUENCY: DC - 3 GHz	<input checked="" type="checkbox"/> CONTINUITY
<input type="checkbox"/> VSWR: ____ MAX.	<input checked="" type="checkbox"/> HI-POT: 750 VRMS
<input type="checkbox"/> INS. LOSS: ____ dB MAX.	<input type="checkbox"/> OTHER

**CUSTOMER OUTLINE DRAWING**  
 ALL OTHER SHEETS ARE FOR INTERNAL USE ONLY

UNLESS OTHERWISE SPECIFIED, DIMENSIONS ARE IN INCHES AND TOLERANCES ARE: 2 PLACE DECIMAL ±.015 (0.381 mm) 3 PLACE DECIMAL ±.005 (0.127 mm) ANGLES ± 1°	MATERIAL SEE NOTES	DRAWN KRISHNA S	DATE 11-Dec-19	TITLE BNC STR BHD JACK TO SMA STR PLUG USING RG 58 CABLE VARIOUS LENGTH	Amphenol RF www.amphenolrf.com
NOTICE - These drawings, specifications, or other data (1) are, and remain the property of Amphenol corp. (2) must be returned upon request; and (3) are confidential and not to be disclosed to any person other than those to whom they are given by Amphenol Corp. the furnishing of these drawings, specifications, or other data by Amphenol Corp., or to any other person to anyone for any purpose is not to be regarded by implication or otherwise in any manner licensing, granting rights to permitting such holder or any other person to manufacture, use or sell any product, process or design, patented or otherwise, that may in any way be related to or disclosed by said drawings, specifications, or other data.	REFERENCE EAR # 9575	ENGINEER KRISHNA S	DATE 11-Dec-19	SCALE: 1.7:1.0 SHEET 2 OF 2	
	CONFIGURATION LEVEL: In Work	APPROVED O.BARTHELMES	DATE 27-Jan-20	DWG SIZE B	DRAWING NO.95-850-246-XXX
	FINISH	CAD FILE		REV A	ITEM NO.95-850-246-XXX
					PART NO.95-850-246-XXX

## X-ON Electronics

Largest Supplier of Electrical and Electronic Components

*Click to view similar products for [RF Cable Assemblies](#) category:*

*Click to view products by [Amphenol](#) manufacturer:*

Other Similar products are found below :

[73-6352-10](#) [73-6353-3](#) [73-6364-6](#) [R285001001](#) [R288940004](#) [R288940005](#) [145111-05-12.00](#) [1661-C-24](#) [1801171170914KE](#) [24P104C24J1-012](#) [24P104C24P1-006](#) [24P104C24P1-018](#) [24P204C24J1-003](#) [172-2150-EX](#) [1800920920914PJ](#) [FCB-3030-ALT](#) [21117-046](#) [21117-050](#) [PCX-24-50](#) [24P103C24P2-003](#) [25P203C25P2-003](#) [PTWY-24-78](#) [R284008001](#) [R285001021](#) [R285426000](#) [R288940003](#) [R288940008](#) [RF179-74BJ3-77RP1-0305](#) [4814-BB-24](#) [5260-72](#) [JT2N1-CL1-1F](#) [DLP-COAX1](#) [4814-K-48](#) [115101-09-06.00](#) [CCNTN2-MM-LL335-26](#) [73-6351-25](#) [73-6352-3](#) [73-6353-25](#) [1800920920610PJ](#) [GD0BQ0BQ024.0](#) [1-3636-600-5210](#) [TL8A-11SMA-11SMA-01500-51](#) [R284C0351060](#) [R288940009](#) [R284C0351028](#) [R288940002](#) [9702-1SL-1](#) [PT82NSMA](#) [73-6353-10](#) [R285020301W](#)