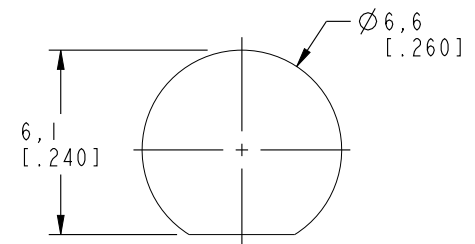


NOTES:

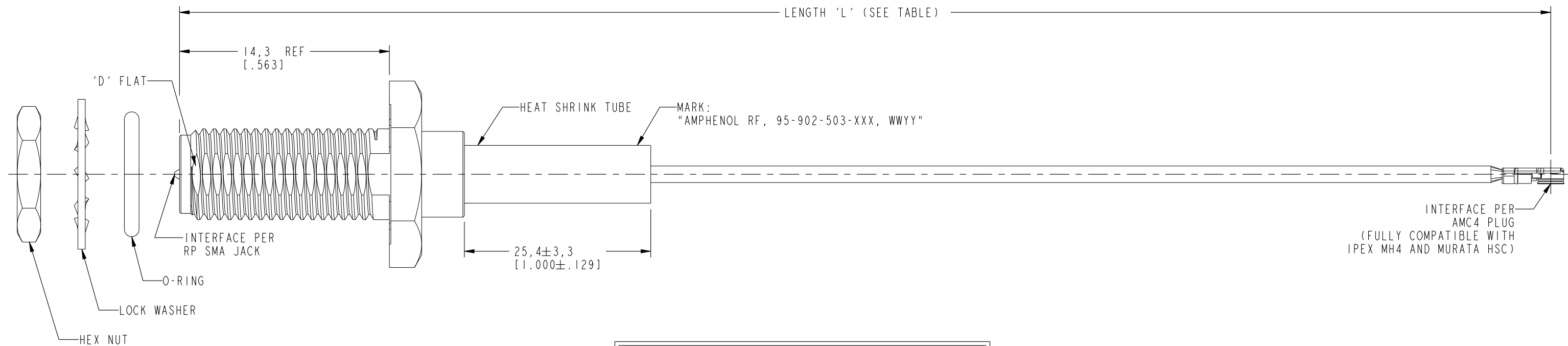
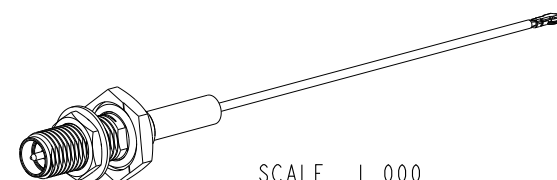
1. MATERIALS AND FINISHES::
 RP SMA STR BHD JACK IP 67 - BRASS, GOLD PLATING
 CABLE - 1.13 MM CABLE
2. ELECTRICAL
 A. IMPEDANCE: 50 OHM
3. PACKAGING
 A. QUANTITY: SINGLE PACK
 B. MARKING : BAG TO BE MARKED
 "AMPHENOL RF, 95-902-503-XXX AND DATE CODE"

THIRD ANGLE PROJ.

REVISIONS				
REV	DESCRIPTION	DATE	ECN	APPR
A	RELEASE TO MFG.	07-Nov-18	9565	VR



RECOMMENDED MOUNTING HOLE DIMENSIONS



LENGTH TABLE	
PART NUMBER (IMPERIAL)	LENGTH AND TOLERANCE 'L' IN MM (INCHES)
95-902-503-050	50.00 ± 3.81 [1.969 ± 0.150]
95-902-503-100	100.00 ± 3.81 [3.937± 0.150]
95-902-503-150	150.00 ± 3.81 [5.906± 0.150]
95-902-503-200	200.00 ± 5.08 [7.874± 0.200]
95-902-503-250	250.00 ± 5.08 [9.843± 0.200]
95-902-503-300	300.00 ± 5.08 [11.811± 0.200]

DESIGN REQUIREMENTS:

<input checked="" type="checkbox"/> FREQUENCY: DC - 6 GHz	<input checked="" type="checkbox"/> CONTINUITY
<input type="checkbox"/> VSWR: ---- MAX	<input checked="" type="checkbox"/> HI-POT: 200 VRMS
<input type="checkbox"/> INS. LOSS: ----dB MAX	<input type="checkbox"/> OTHERS:

CUSTOMER OUTLINE DRAWING
 ALL OTHER SHEETS ARE FOR INTERNAL USE ONLY

UNLESS OTHERWISE SPECIFIED, DIMENSIONS ARE IN METRIC AND TOLERANCES ARE: <0.5mm ± 0.05mm 0.5 - 6mm ± 0.1mm 6 - 30mm ± 0.2mm 30 - 120mm ± 0.3mm ANGLES ±1°		MATERIAL SEE NOTES	DRAWN VIJAY N M	DATE 17-Oct-18	TITLE RP SMA STR BHD JACK IP 67 TO AMC4 R/A PLUG USING 1.13 MM CABLE VARIOUS LENGTH		Amphenol RF www.amphenolrf.com	
NOTICE - These drawings, specifications, or other data (1) are, and remain the property of Amphenol corp. (2) must be returned upon request; and (3) are confidential and not to be disclosed to any person other than those to whom they are given by Amphenol Corp. the furnishing of these drawings, specifications, or other data by Amphenol Corp., or to any other person to anyone for any purpose is not to be regarded by implication or otherwise in any manner licensing, granting rights to permitting such holder or any other person to manufacture, use or sell any product, process or design, patented or otherwise, that may in any way be related to or disclosed by said drawings, specifications, or other data.		REFERENCE EAR# 8685	ENGINEER VIJAY N M	DATE 17-Oct-18	SCALE: 3.8:1.0 SHEET 2 OF 2		DRAWING NO. 95-902-503-XXX	
		REF:	APPROVED K.CAPOZZI	DATE 07-Nov-18	DWG SIZE B		ITEM NO. 95-902-503-XXX	
		CONFIGURATION LEVEL: In Work	CAD FILE		REV A		PART NO. 95-902-503-XXX	
		FINISH						

X-ON Electronics

Largest Supplier of Electrical and Electronic Components

Click to view similar products for [RF Cable Assemblies](#) category:

Click to view products by [Amphenol](#) manufacturer:

Other Similar products are found below :

[73-6352-10](#) [73-6353-3](#) [73-6364-6](#) [R285001001](#) [R288940004](#) [R288940005](#) [145111-05-12.00](#) [1661-C-24](#) [1801171170914KE](#) [24P104C24J1-012](#) [24P104C24P1-006](#) [24P104C24P1-018](#) [24P204C24J1-003](#) [172-2150-EX](#) [1800920920914PJ](#) [FCB-3030-ALT](#) [21117-046](#) [21117-050](#) [PCX-24-50](#) [24P103C24P2-003](#) [25P203C25P2-003](#) [PTWY-24-78](#) [R284008001](#) [R285001021](#) [R285426000](#) [R288940003](#) [R288940008](#) [RF179-74BJ3-77RP1-0305](#) [4814-BB-24](#) [5260-72](#) [JT2N1-CL1-1F](#) [DLP-COAX1](#) [4814-K-48](#) [115101-09-06.00](#) [CCNTN2-MM-LL335-26](#) [73-6351-25](#) [73-6352-3](#) [73-6353-25](#) [1800920920610PJ](#) [GD0BQ0BQ024.0](#) [1-3636-600-5210](#) [TL8A-11SMA-11SMA-01500-51](#) [R284C0351060](#) [R288940009](#) [R284C0351028](#) [R288940002](#) [9702-1SL-1](#) [PT82NSMA](#) [73-6353-10](#) [R285020301W](#)