

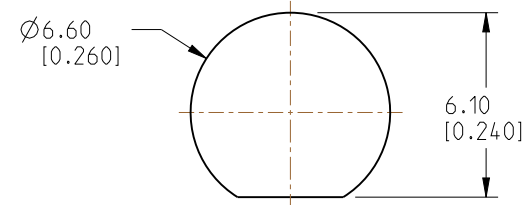
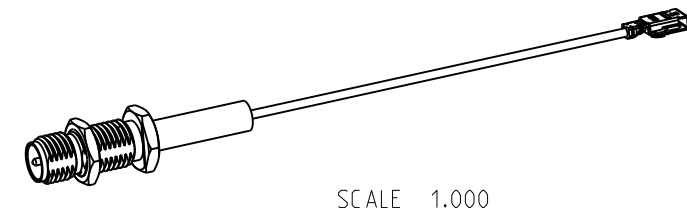
NOTES:

1. MATERIALS AND FINISHES:
 RP SMA STR BHD JACK - BRASS, GOLD PLATING

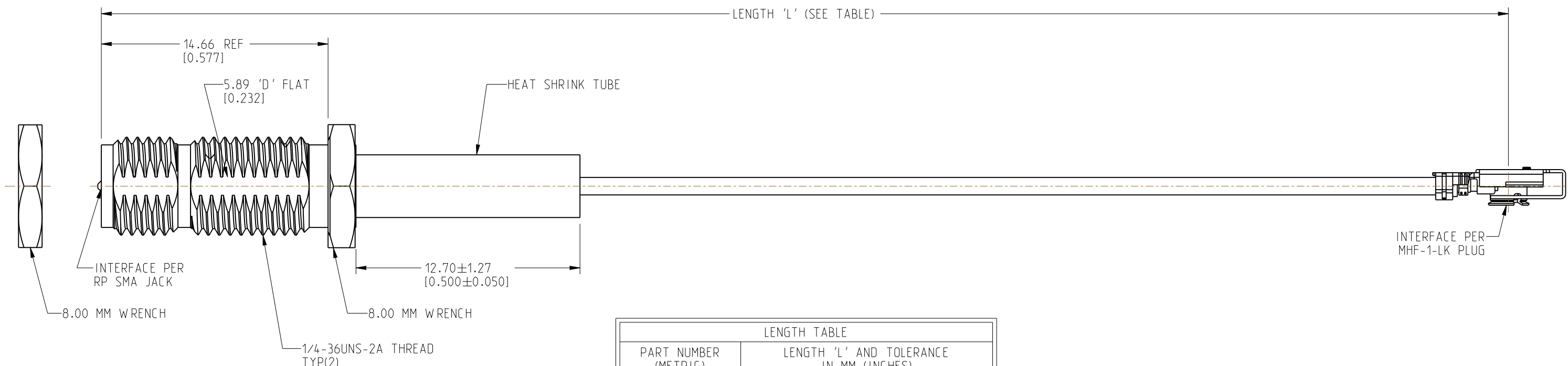
 MHF-1-LK RA PLUG:
 HOUSING - PBT, BLACK
 CONTACT AND GROUND CONTACT - PHOSPHOR BRONZE, SILVER PLATING

 CABLE - 1.13 MM CABLE
2. ELECTRICAL:
 A. IMPEDANCE: 50 OHM
3. PACKAGING:
 A. QUANTITY: SINGLE PACK
 B. MARKING: BAG TO BE MARKED
 "AMPHENOL RF, 95-902-588-XXX AND DATE CODE"

| REVISIONS | | | | |
|-----------|-----------------|-----------|-------|----|
| REV | DESCRIPTION | DATE | ECN | BY |
| A | RELEASE TO MFG. | 22-FEB-23 | 16582 | TR |



RECOMMENDED MOUNTING HOLE DIMENSIONS



| LENGTH TABLE | |
|----------------------|---|
| PART NUMBER (METRIC) | LENGTH 'L' AND TOLERANCE IN MM (INCHES) |
| 95-902-588-050 | 50.00 ± 3.81 [1.969 ± 0.150] |
| 95-902-588-100 | 100.00 ± 3.81 [3.937 ± 0.150] |
| 95-902-588-150 | 150.00 ± 3.81 [5.906 ± 0.150] |
| 95-902-588-200 | 200.00 ± 5.08 [7.874 ± 0.200] |
| 95-902-588-250 | 250.00 ± 5.08 [9.843 ± 0.200] |
| 95-902-588-300 | 300.00 ± 5.08 [11.811 ± 0.200] |
| 95-902-588-400 | 400.00 ± 5.08 [15.748 ± 0.200] |

DESIGN REQUIREMENTS:

| | |
|---|--|
| <input checked="" type="checkbox"/> FREQUENCY: DC - 6 GHz | <input checked="" type="checkbox"/> CONTINUITY |
| <input type="checkbox"/> VSWR: _____ MAX. | <input checked="" type="checkbox"/> HI-POT: 200 VRMS |
| <input type="checkbox"/> INS. LOSS: _____ dB MAX. | <input type="checkbox"/> OTHER: |

CUSTOMER OUTLINE DRAWING
 ALL OTHER SHEETS ARE FOR INTERNAL USE ONLY

| | | | | | | | | | |
|--|--|---|--|---|--|---|--|--|--|
| NOTICE: These drawings, specifications, or other data (1) are, and remain the property of Amphenol corp. (2) must be returned upon request; and (3) are confidential and not to be disclosed to any person other than those to whom they are given by Amphenol Corp. The furnishing of these drawings, specifications, or other data by Amphenol Corp., or to any other person to anyone for any purpose is not to be regarded by implication or otherwise in any manner licensing, granting rights to permitting such holder or any other person to manufacture, use or sell any product, process or design, patented or otherwise, that may in any way be related to or disclosed by said drawings, specifications, or other data. | | UNLESS OTHERWISE SPECIFIED DIMENSIONS ARE METRIC (INCHES) AND TOLERANCES ARE: <0.5mm = ±0.05mm [-0.020 = ±0.002] 0.5 - 6mm = ±0.1mm [+0.020 - 0.236 = ±0.004] >6.00 - 30mm = ±0.2mm [+0.236 - 1.181 = ±0.008] >30.00 - 120mm = ±0.3mm [+1.181 - 4.725 = ±0.012] | | MATERIAL SEE NOTES | | TITLE RP SMA STR BHD JACK TO MHF-1-LK RA PLUG USING 1.13 MM CABLE VARIOUS LENGTH | | Amphenol RF | |
| THIRD ANGLE PROJ. | | REFERENCE | | ENGR.1 THAMBI RAJ ENGR.2 DATE 27-DEC-22 | | SHEET NO. 2 OF 2 SCALE: 3.9:1.0 | | DRAWING NO. 95-902-588-XXX ITEM NO. 95-902-588-XXX PART NO. 95-902-588-XXX | |
| EAR# 11658 | | ANGLES = ±1° | | B | | A | | REV A | |

X-ON Electronics

Largest Supplier of Electrical and Electronic Components

Click to view similar products for [RF Cable Assemblies](#) category:

Click to view products by [Amphenol](#) manufacturer:

Other Similar products are found below :

[73-6352-10](#) [73-6353-3](#) [73-6364-6](#) [R285001001](#) [R288940004](#) [145111-05-12.00](#) [1661-C-24](#) [1801171170914KE](#) [24P104C24J1-012](#)
[24P104C24P1-018](#) [24P204C24J1-003](#) [FCB-3030-ALT](#) [21117-046](#) [21117-050](#) [24P103C24P2-003](#) [PTWY-24-78](#) [R284008001](#) [R285001021](#)
[R288940003](#) [R288940034](#) [MDM-21PH006P-A174](#) [4814-BB-24](#) [5260-72](#) [DLP-COAX1](#) [4814-K-48](#) [115101-09-06.00](#) [MXHT83QE3000](#) [73-6351-25](#) [73-6352-3](#) [73-6353-25](#) [81-6201-1600](#) [GD0BQ0BQ024.0](#) [1-3636-600-5210](#) [R288940009](#) [R288940002](#) [PT82NSMA](#) [73-6353-10](#)
[Minibend-9](#) [Minibend-4](#) [BNC TO SMA Cable](#) [MIKROE-274](#) [Microbend MTR-11](#) [PT815NN](#) [MF53/1x8A_21MXP/11SK/305](#) [Minibend-3](#)
[Minibend-11](#) [Minibend-6](#) [Minibend-2.5](#) [Minibend-13](#) [Minibend-3.5](#)